

**MEXICO OIL CONSERVATION COMMISSION
WELL LOCATION AND ACREAGE DEDICATION PLAT**

Form O-10,
Supersedes O-12H
Effective 1-1-75

All distances must be from the outer boundaries of the Section

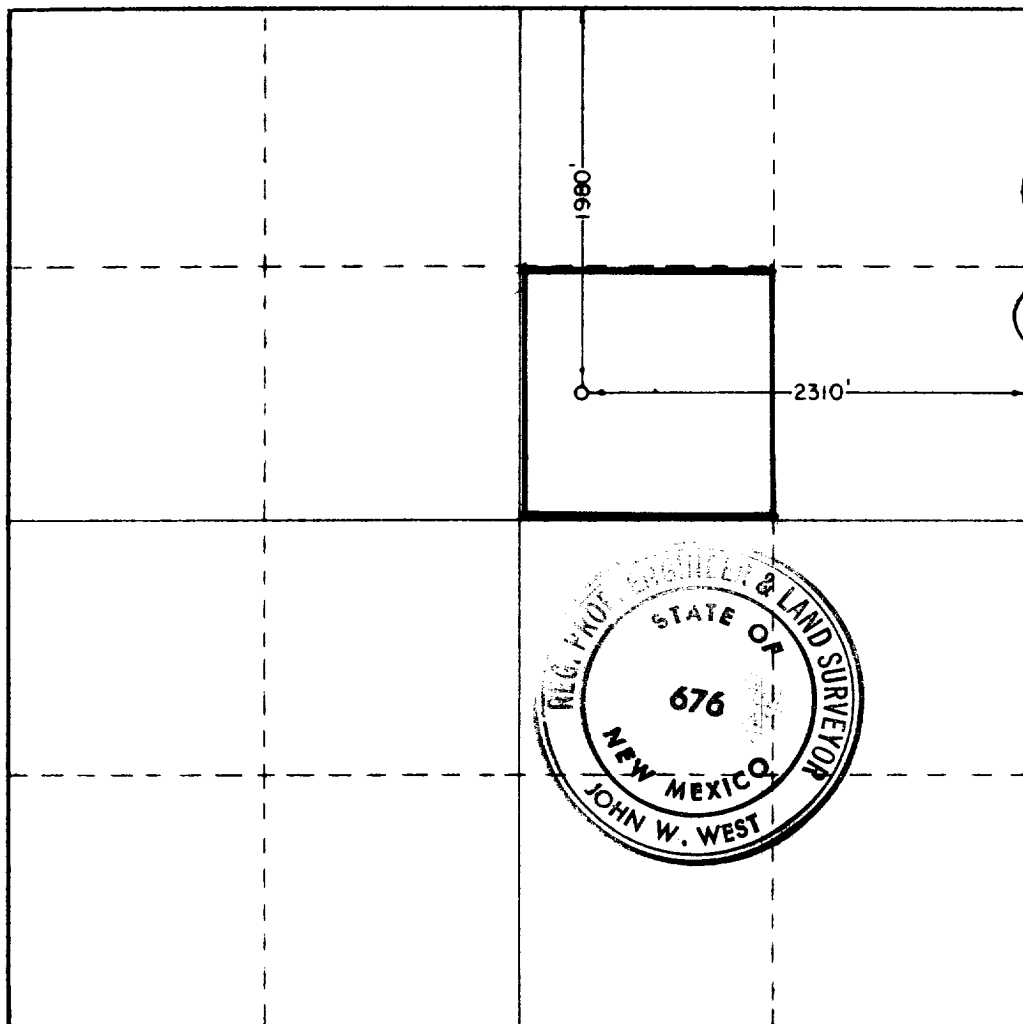
Operator McCLELLAN OIL CORPORATION			Lease MARISUE		Well No. 5
Tract Letter G	Section 24	Township 14 SOUTH	Range 29 EAST	County CHAVES	
Actual Well Location of Well: 1980 feet from the NORTH line and 2310 feet from the EAST line					
Ground Level Elev. 3808.0	Producing Formation Queen	Pool <i>Und</i> Assoc. Double "L" Queen Assoc.		Dedicated Acreage: 40	

1. Outline the acreage dedicated to the subject well by colored pencil or hatchure marks on the plat below.
2. If more than one lease is dedicated to the well, outline each and identify the ownership thereof (both as to working interest and royalty).
3. If more than one lease of different ownership is dedicated to the well, have the interests of all owners been consolidated by communitization, unitization, force-pooling, etc?

☐ Yes ☐ No If answer is "yes," type of consolidation _____

If answer is "no," list the owners and tract descriptions which have actually been consolidated. (Use reverse side of this form if necessary.) _____

No allowable will be assigned to the well until all interests have been consolidated (by communitization, unitization, forced-pooling, or otherwise) or until a non-standard unit, eliminating such interests, has been approved by the Commission.



CERTIFICATION

I hereby certify that the information contained herein is true and complete to the best of my knowledge and belief

Jack L. McClellan
 Name **Jack L. McClellan**
 Position **President**

Company
McClellan Oil Corporation

Date
August 10, 1979

I hereby certify that the well location shown on this plat was plotted from field notes of actual surveys made by me or under my supervision, and that the same is true and correct to the best of my knowledge and belief.

Date Surveyed
AUGUST 3RD, 1979

Registered Professional Engineer and/or Land Surveyor

Ronald J. Eidson

Certificate No. **John W. West 676**
Ronald J. Eidson 3239

