

UNITED STATES  
DEPARTMENT OF THE INTERIOR  
GEOLOGICAL SURVEY

30-005-61372

## APPLICATION FOR PERMIT TO DRILL, DEEPEN, OR PLUG BACK

## 1a. TYPE OF WORK

DRILL ☒DEEPEN ☐PLUG BACK ☐

## b. TYPE OF WELL

OIL  
WELL ☐GAS  
WELL ☒

OTHER

SINGLE  
ZONE ☒MULTIPLE  
ZONE ☐

## 2. NAME OF OPERATOR

Read &amp; Stevens, Inc. ✓

## 3. ADDRESS OF OPERATOR

P. O. Box 1518 Roswell, New Mexico 88201

## 4. LOCATION OF WELL (Report location clearly and in accordance with any State requirements)

At surface

1650 FNL and 1650' FWL

At proposed prod. zone

Same

## 14. DISTANCE IN MILES AND DIRECTION FROM NEAREST TOWN OR POST OFFICE\*

Approximately 12 miles east of Lake Arthur, New Mexico

## 15. DISTANCE FROM PROPOSED\*

LOCATION TO NEAREST

PROPERTY OR LEASE LINE, FT.

(Also to nearest drlg. unit line, if any)

1650'

## 18. DISTANCE FROM PROPOSED LOCATION\*

TO NEAREST WELL, DRILLING, COMPLETED,  
OR APPLIED FOR, ON THIS LEASE, FT.

3800'

## 16. NO. OF ACRES IN LEASE

2520

## 19. PROPOSED DEPTH

9100'

17. NO. OF ACRES ASSIGNED  
TO THIS WELL

320

## 20. ROTARY OR CABLE TOOLS

Rotary

## 21. ELEVATIONS (Show whether DF, RT, GR, etc.)

3518 GR

## 22. APPROX. DATE WORK WILL START\*

February 1, 1982

## PROPOSED CASING AND CEMENTING PROGRAM

SIZE OF HOLE	SIZE OF CASING	WEIGHT PER FOOT	SETTING DEPTH	QUANTITY OF CEMENT
17 1/2"	13 3/8"	54.4#	400'	450 Sx "C" Circulated
11"	8 5/8"	24.0#	1700'	600 Sx HL & 200 Sx "C" Circulated
7 7/8"	4 1/2"	10.5#	9100'	500 Sx Class "H"

## Mud Program:

- 0' - 400' Spud mud with Magcobar gel and lime. If seepage is noted, add lost circulation material. If circulation is lost, dry drill to 400'.
- 400' - 5,200' Fresh water and native mud. Mud wt. 8.4#, Vis. 30-32, WL no control.
- 5,200' - 8,000' Magcogel and oil type drilling fluid. Mud wt. 8.5# - 8.8#, Vis. 30-32, 3-4 % oil, WL no control.
- 8,000' - 9,100' Fresh water, low solids spersen mud system with CMC, 3 % KCL, Starch, Drispak, and salt gel, Mud wt. 9.0 - 9.5#, Vis. 32-34, WL 10 cc or below, PH 9 - 9.5.

BOP Program: Will use a 5,000 psi wp Shaffer type "LWS" double-BOP and one 90-115 Melco closing unit, 90 gal. capacity. See Exhibit "E".

Gas is not dedicated.

IN ABOVE SPACE DESCRIBE PROPOSED PROGRAM: If proposal is to deepen or plug back, give data on present productive zone and proposed new productive zone. If proposal is to drill or deepen directionally, give pertinent data on subsurface locations and measured and true vertical depths. Give blowout preventer program, if any.

24.

SIGNED

George H. Stewart

TITLE

Agent for:  
Read & Stevens, Inc.

DATE December 18, 1981

(This space for Federal or State office use)

PERMIT NO.

APPROVED

APPROVAL DATE

OIL &amp; GAS

APPROVED BY

CONDITIONS OF APPROVAL

GEORGE H. STEWART

TITLE

U.S. GEOLOGICAL SURVEY  
ROSWELL, NEW MEXICO

JAN 19 1982  
FOR  
JAMES A. GILLHAM  
DISTRICT SUPERVISOR

APPROVAL SUBJECT TO  
GENERAL REQUIREMENTS AND  
SPECIAL STIPULATIONS On Reverse Side  
ATTACHED

All distances must be from the outer boundaries of the Section.

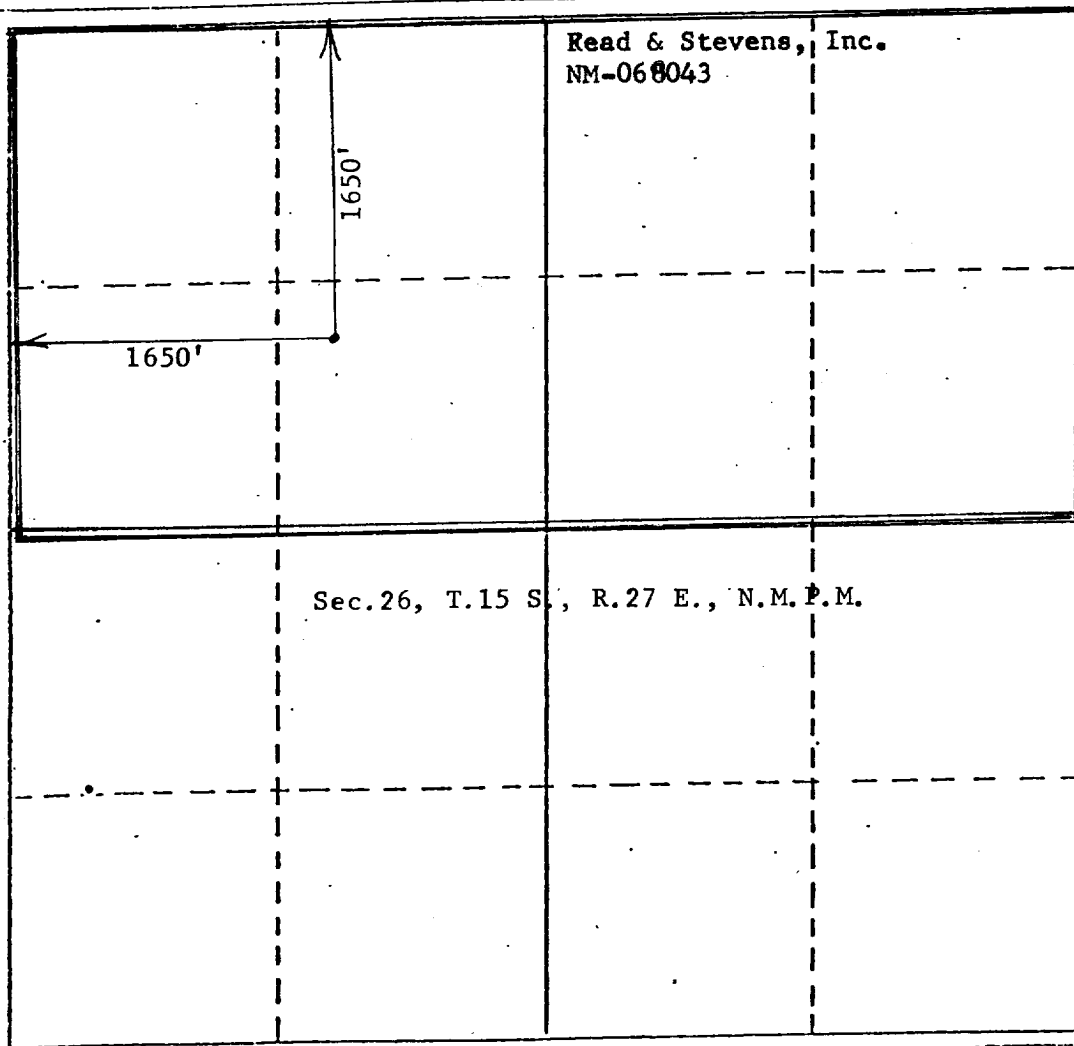
Operator <b>Read &amp; Stevens, Inc</b>		Lease <b>Harris Federal</b>		Well No. <b>#8</b>
Unit Letter <b>F</b>	Section <b>26</b>	Township <b>15 South</b>	Range <b>27 East</b>	County <b>Chaves</b>
Actual Footage Location of Well: <b>1650</b> feet from the <b>North</b> line and <b>1650</b> feet from the <b>West</b> line				
Ground Level Elev. <b>3518</b>	Producing Formation <b>Atoka</b>	Pool <b>Buffalo Valley Penn.</b>	Dedicated Acreage: <b>320</b> Acres	

1. Outline the acreage dedicated to the subject well by colored pencil or hatchure marks on the plat below.
2. If more than one lease is dedicated to the well, outline each and identify the ownership thereof (both as to working interest and royalty).
3. If more than one lease of different ownership is dedicated to the well, have the interests of all owners been consolidated by communitization, unitization, force-pooling, etc?

☐ Yes ☐ No If answer is "yes," type of consolidation \_\_\_\_\_

If answer is "no," list the owners and tract descriptions which have actually been consolidated. (Use reverse side of this form if necessary.) \_\_\_\_\_

No allowable will be assigned to the well until all interests have been consolidated (by communitization, unitization, forced-pooling, or otherwise) or until a non-standard unit, eliminating such interests, has been approved by the Division.



CERTIFICATION

I hereby certify that the information contained herein is true and complete to the best of my knowledge and belief.

*George R. Smith*

Name

George R. Smith

Position

Agent for:

Company

Read & Stevens, Inc.

Date

December 18, 1981

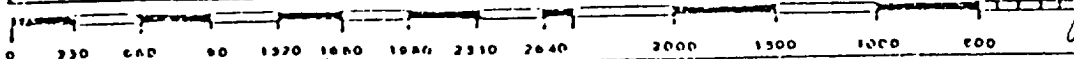
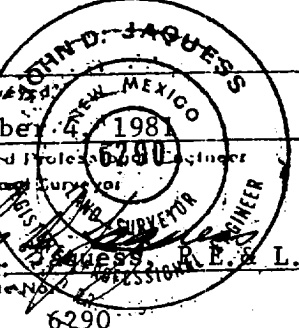
I hereby certify that the well location shown on this plat was plotted from field notes of actual surveys made by me or under my supervision, and that the same is true and correct to the best of my knowledge and belief.

Date Surveyed

December 1981

Registered Professional Engineer and/or Land Surveyor

John A. Jaquess, P.E. & L.S.  
Certificate No. 6290



# APPLICATION FOR DRILLING

READ & STEVENS, INC.  
Harris Federal, Well No. 8  
1650' FWL & 1650' FNL, Sec. 26-T15S-R27E  
Chaves County, New Mexico  
Lease No.: NM-068043  
(Development Well)

In conjunction with Form 9-331C, Application for Permit to Drill subject well, Read & Stevens, Inc. submits the following items of pertinent information in accordance with USGS requirements:

1. The geologic surface formation is Permian with quaternary alluvium and other surficial deposits.
2. The estimated tops of geologic markers are as follows:

Queen	923'	Cisco	7148'
San Andres	1660'	Canyon	7547'
Glorietta	2697'	Strawn	8098'
Tubb	4376'	Atoka	8500'
Abo	5150'	Mississippi	8806'
Wolfcamp	6320'	Chester	8926'
		Total depth	9100'
3. The estimated depth at which anticipated water, oil, or gas formations are expected to be encountered:

Water: Approximately 200 - 400' for surface water.

Gas: Atoka: approximately 8730'

Oil: San Andres at approximately 1670'.
4. Proposed Casing Program: See Form 9-331C.
5. Pressure Control Equipment: See Form 9-331C and Exhibit "E".
6. Mud Program: See Form 9-331C.
7. Auxiliary Equipment: Blowout preventer, gas detector, kelly cock, pit level monitor, flow sensors and stabbing valve.
8. Testing, Logging and Coring Program:

Drill Stem Tests: One possible in each of the following:

Strawn:	8098' - 8198'
Atoka:	8500' - 8600'

Logging: Gamma Ray: Surface to T.D.  
FDC/CNL: Int. Csg. to T.D.  
Dual Ind. Laterolog: Int. Csg. to T.D.

Coring: None.
9. No abnormal pressures or temperatures are anticipated. In the event abnormal pressures are encountered the proposed mud program will be modified to increase the mud weight.
10. Anticipated starting date: February 1, 1982.  
Anticipated completion of drilling operations: Aprox. 35 days.

R26E

R27E

R28E

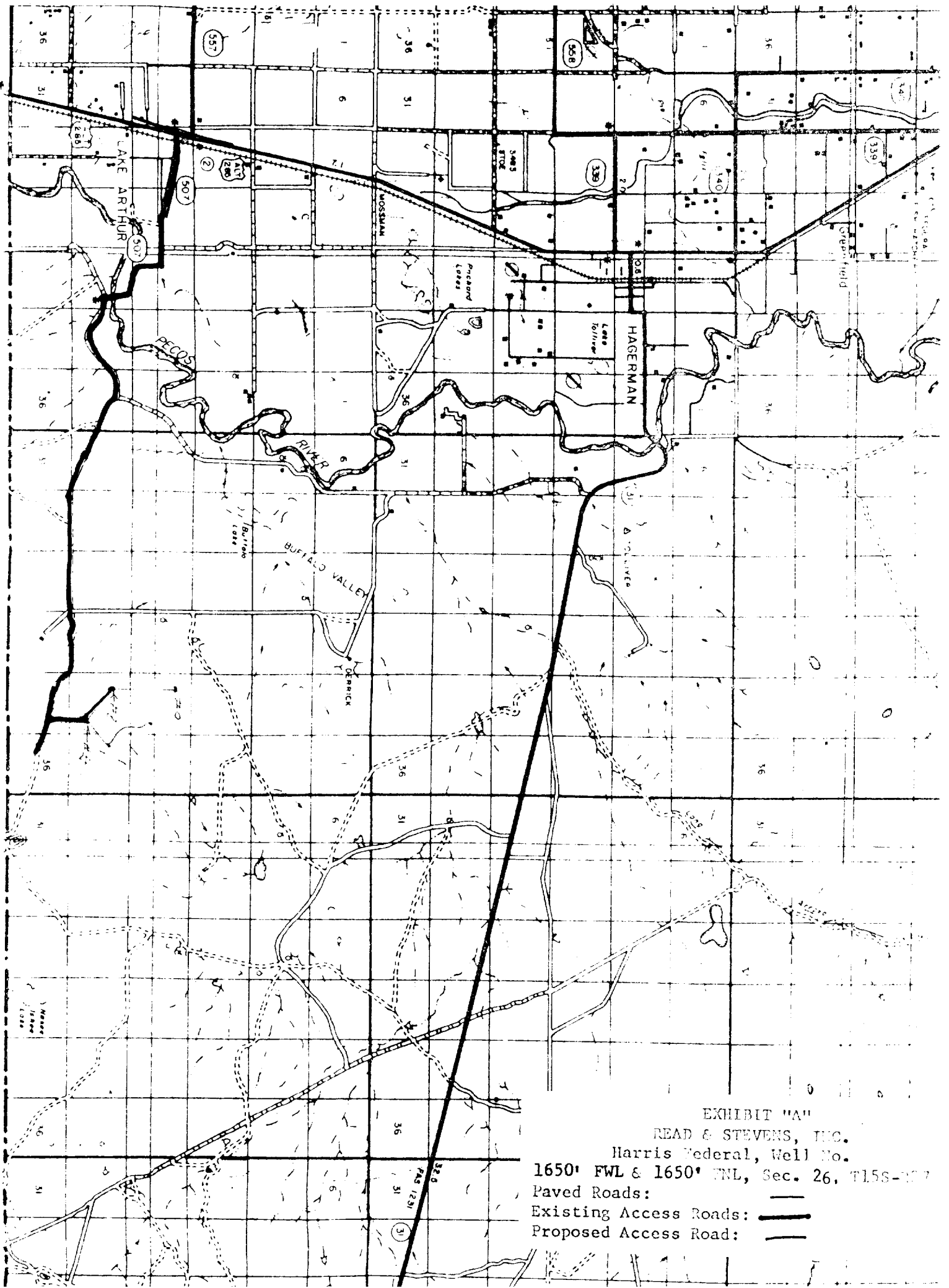


EXHIBIT "A"  
READ & STEVENS, INC.  
Harris Federal, Well No.  
1650' FWL & 1650' FNL, Sec. 26, T15S-R27E  
Paved Roads: ———  
Existing Access Roads: - - - - -  
Proposed Access Road: - - - - -

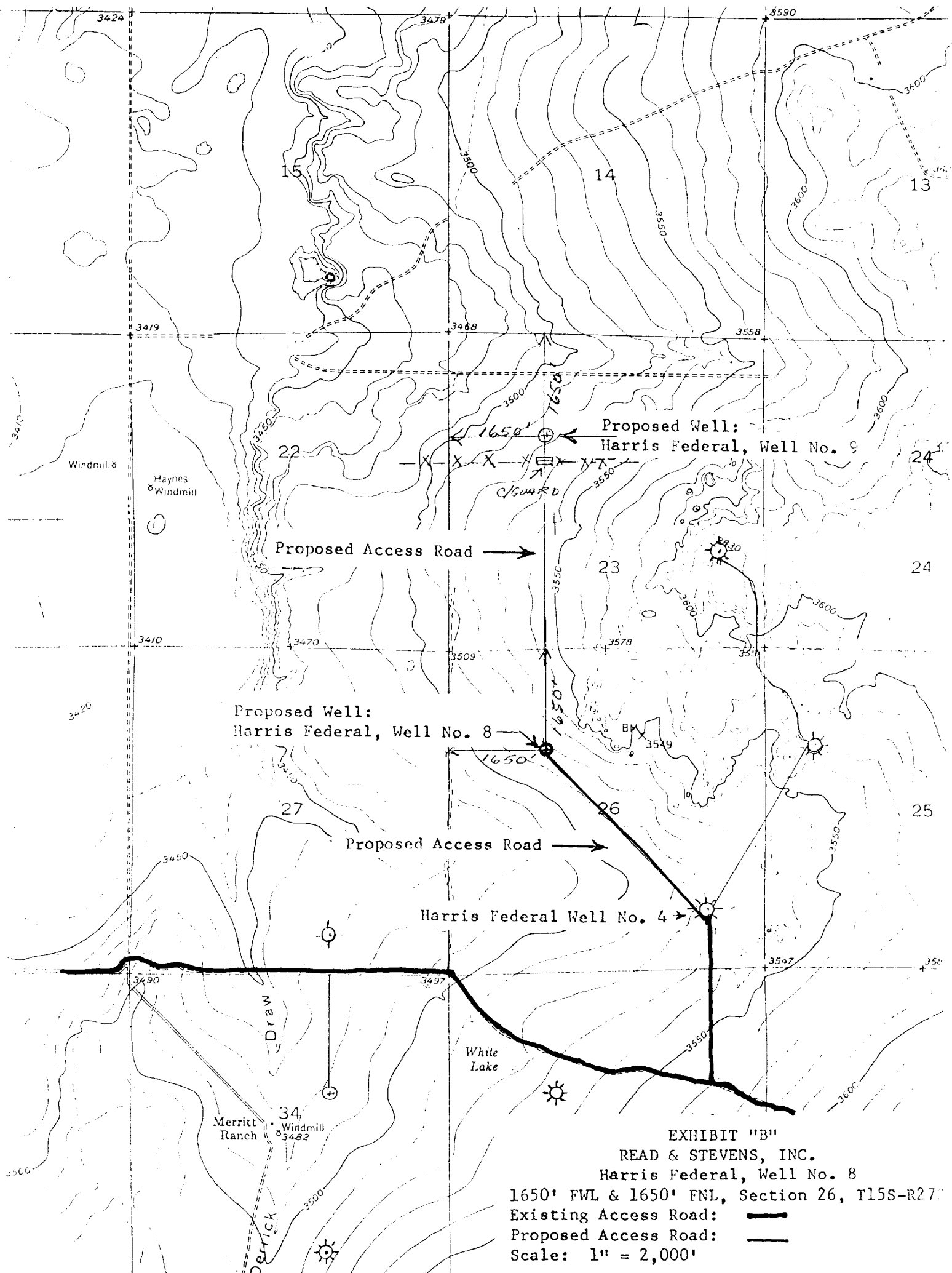


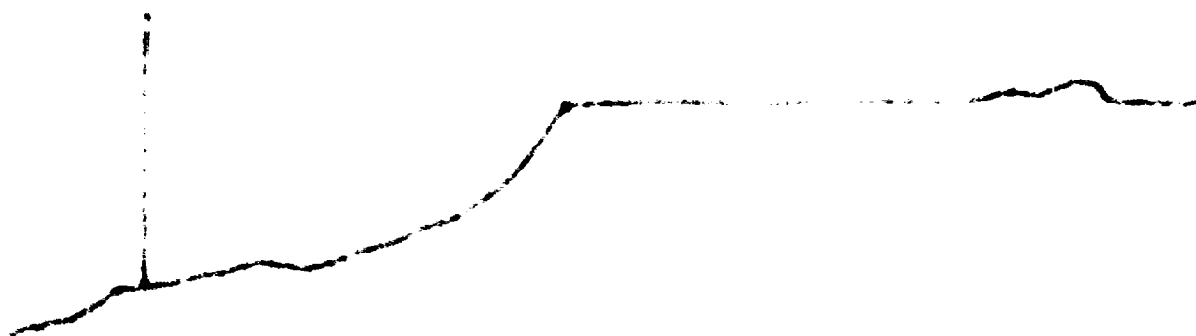


EXHIBIT "B"  
READ & STEVENS, INC.  
Harris Federal, Well No. 8  
1650' FWL & 1650' FNL, Section 26, T15S-R27  
Existing Access Road:   
Proposed Access Road:   
Scale: 1" = 2,000'



•••••

SIERRA DRILLING CO. Rig #2  
6L to Floor 132"  
6L to Bottom of Rotary 116"

This Stack is

110.5"

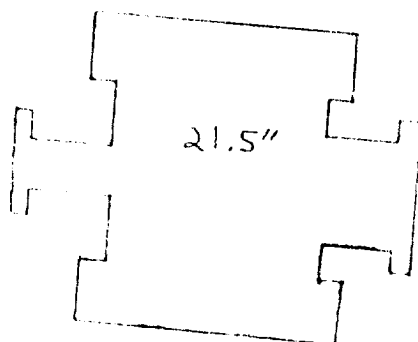
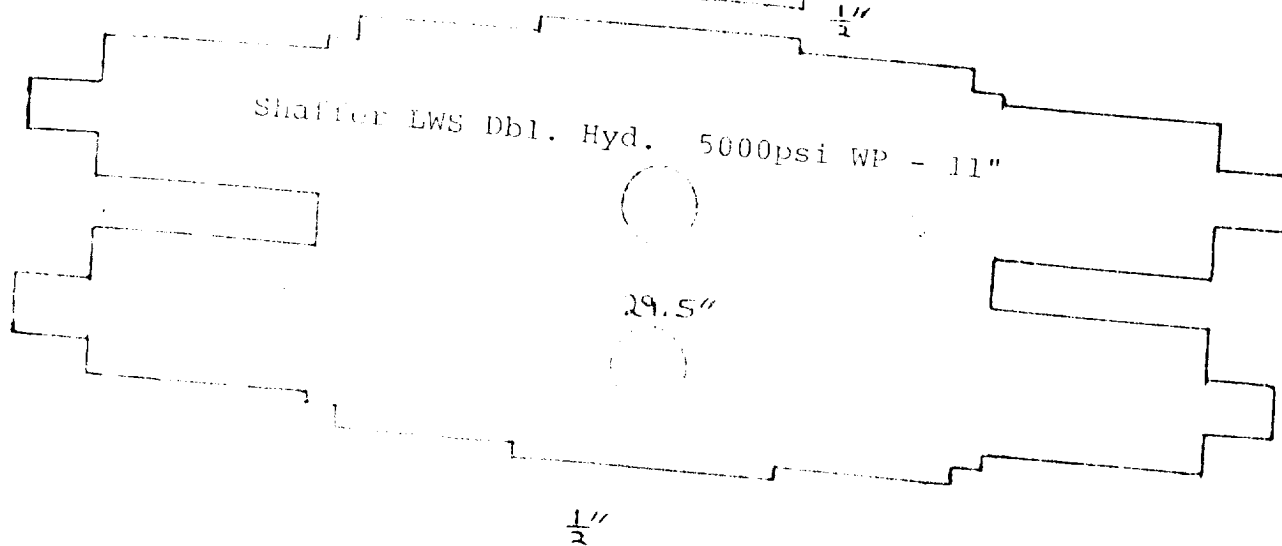
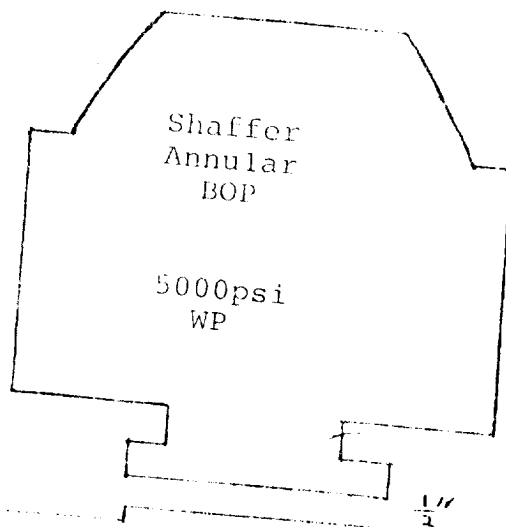
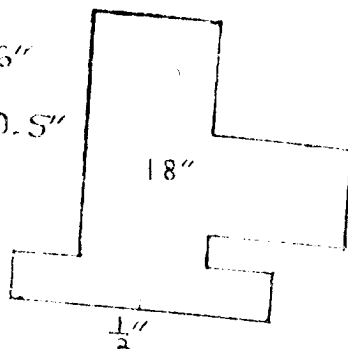


EXHIBIT "E"  
READ & STEVENS, INC.  
Blowout Preventer Spec.  
Harris Federal, Well No. 8

- F. ONE (1) BEANOT SINGLE TANDEM (DUAL SCREEN) SHALE SHAKER
- G. THREE (3) MISSION MAGNUM 5" X 6" CENTRIFUGAL PUMPS POWERED BY 60 HP ELECTRIC MOTORS
- H. ONE (1) 500 BBL WATER TANK WITH 2 - 2" X 3" MISSION MAGNUM CENTRIFUGAL PUMPS - POWERED BY 20 HP ELECTRIC MOTORS
- I. ONE (1) 500 BBL DIESEL TANK WITH 2 - 1" X 1 1/2" MISSION CENTRIFUGAL PUMPS POWERED BY 1 HP ELECTRIC MOTORS
- J. ONE (1) 6" MISSION MUO HOOPER COMPLETE WITH MOUNTING BASE, VENTURI, NOZZEL, BUTTERFLY VALVE AND SACK TABLE

## V B.O.P. EQUIPMENT

- A. ONE (1) 11" 5000# W.P. SHAFFER ANNULAR B.O.P.
  - B. ONE (1) 11" 5000# W.P. SHAFFER TYPE "LWS" HYDRAULIC OPERATED DOUBLE B.O.P.
  - C. ONE (1) 5000# W.P. CHOKE AND KILL MANIFOLD - SHAFFER EQUIPMENT FOR STANDARD SERVICE
- NOTE: ANNULAR AND DOUBLE RAM B.O.P.'S HAS INTERNAL H2S TRIM
- D. ONE (1) 90-115 MELCO CLOSING UNIT - 90 GALLON COMPLETE WITH ACCUMULATORS AND REMOTE CONTROL UNITS

## VI DRILL PIPE