

UNITED STATES
DEPARTMENT OF THE INTERIOR
GEOLOGICAL SURVEY
NM OIL CONS. COMMISSION
Drawer DD
Artesia, NM 88210

30-005-61373

APPLICATION FOR PERMIT TO DRILL, DEEPEN, OR PLUG BACK

1a. TYPE OF WORK

DRILL ☒DEEPEN ☐PLUG BACK ☐

5. LEASE DESIGNATION AND SERIAL NO.

NM-068043

6. IF INDIAN, ALLOTTEE OR TRIBE NAME

7. UNIT AGREEMENT NAME

8. FARM OR LEASE NAME

Harris Federal

9. WELL NO.

9

10. FIELD AND POOL, OR WILDCAT

Buffalo Valley Penn.

11. SEC., T., R., M., OR BLK.
AND SURVEY OR AREA

Section 23-T15S-R27E

12. COUNTY OR PARISH

Chaves

13. STATE

New Mexico

b. TYPE OF WELL

OIL
WELL ☐GAS
WELL ☒

OTHER

SINGLE
ZONE ☒MULTIPLE
ZONES ☐

2. NAME OF OPERATOR

Read & Stevens, Inc. ✓

3. ADDRESS OF OPERATOR

P. O. Box 1518 Roswell, NM 88201

4. LOCATION OF WELL (Report location clearly and in accordance with any State requirements.)

At surface

1650' FNL and 1650' FWL

At proposed prod. zone

Same

14. DISTANCE IN MILES AND DIRECTION FROM NEAREST TOWN OR POST OFFICE*

Approximately 13 miles east of Lake Arthur, New Mexico

15. DISTANCE FROM PROPOSED*

LOCATION TO NEAREST
PROPERTY OR LEASE LINE, FT.
(Also to nearest drilg. unit line, if any)

1650'

16. NO. OF ACRES IN LEASE

2520

17. NO. OF ACRES ASSIGNED
TO THIS WELL

320

18. DISTANCE FROM PROPOSED LOCATION*
TO NEAREST WELL, DRILLING, COMPLETED,
OR APPLIED FOR, ON THIS LEASE, FT.

3600'

19. PROPOSED DEPTH

9100'

20. ROTARY OR CABLE TOOLS

Rotary

21. ELEVATIONS (Show whether DF, RT, GR, etc.)

3516' GR

22. APPROX. DATE WORK WILL START*

March 1, 1982

23.

PROPOSED CASING AND CEMENTING PROGRAM

SIZE OF HOLE	SIZE OF CASING	WEIGHT PER FOOT	SETTING DEPTH	QUANTITY OF CEMENT
17 1/2"	13 3/8"	54.4#	400'	450 Sx Class "C" Circulated
11"	8 5/8"	24.0#	1700'	600 Sx HL & 200 Sx "C" Circulated
7 7/8"	4 1/2"	10.5#	9100'	500 Sx Class "H"

Mud Program:

- 0' - 400' Spud mud with Magcobar gel and lime. If seepage is noted, add lost circulation material. If circulation is lost, dry drill to 400'.
- 400' - 5,200' Fresh water and native mud. Mud wt. 8.4#, Vis. 30-32, WL no control.
- 5,200' - 8,000' Magcogel and oil type drilling fluid. Mud wt. 8.5# - 8.8#, Vis. 30-32, 3-4% oil, WL no control.
- 8,000' - 9,100' Fresh water, low solids spersen mud system with CMC, 3 % KCL, starch, Drispak, and salt gel, Mud WT. 9.0 - 9.5#, Vis. 32-34, WL 10 cc or below, PH 9 - 9.5.

BOP Program: Will use a 5,000 psi wp Shaffer type "LWS" double-BOP and one 90-115 Melco closing unit, 90 gal. capacity. See Exhibit "E".

Gas not dedicated.

IN ABOVE SPACE DESCRIBE PROPOSED PROGRAM: If proposal is to deepen or plug back, give data on present productive zone and proposed new productive zone. If proposal is to drill or deepen directionally, give pertinent data on subsurface locations and measured and true vertical depths. Give blowout preventer program, if any.

24.

SIGNED

Agent for:

TITLE Read & Stevens, Inc.

DATE

December 21, 1981

(This space for Federal or State office use)

PERMIT NO.

APPROVED

APPROVAL DATE

APPROVED BY

GEORGE H. STEVENSON

TITLE

DATE

CONDITIONS OF APPROVAL
JAN 19 1982FOR
JAMES A. GILLHAM
DISTRICT SUPERVISORAPPROVAL SUBJECT TO
GENERAL REQUIREMENTS AND
SPECIAL REGULATIONS On Reverse Side
ATTACHED

All distances must be from the outer boundaries of the Section.

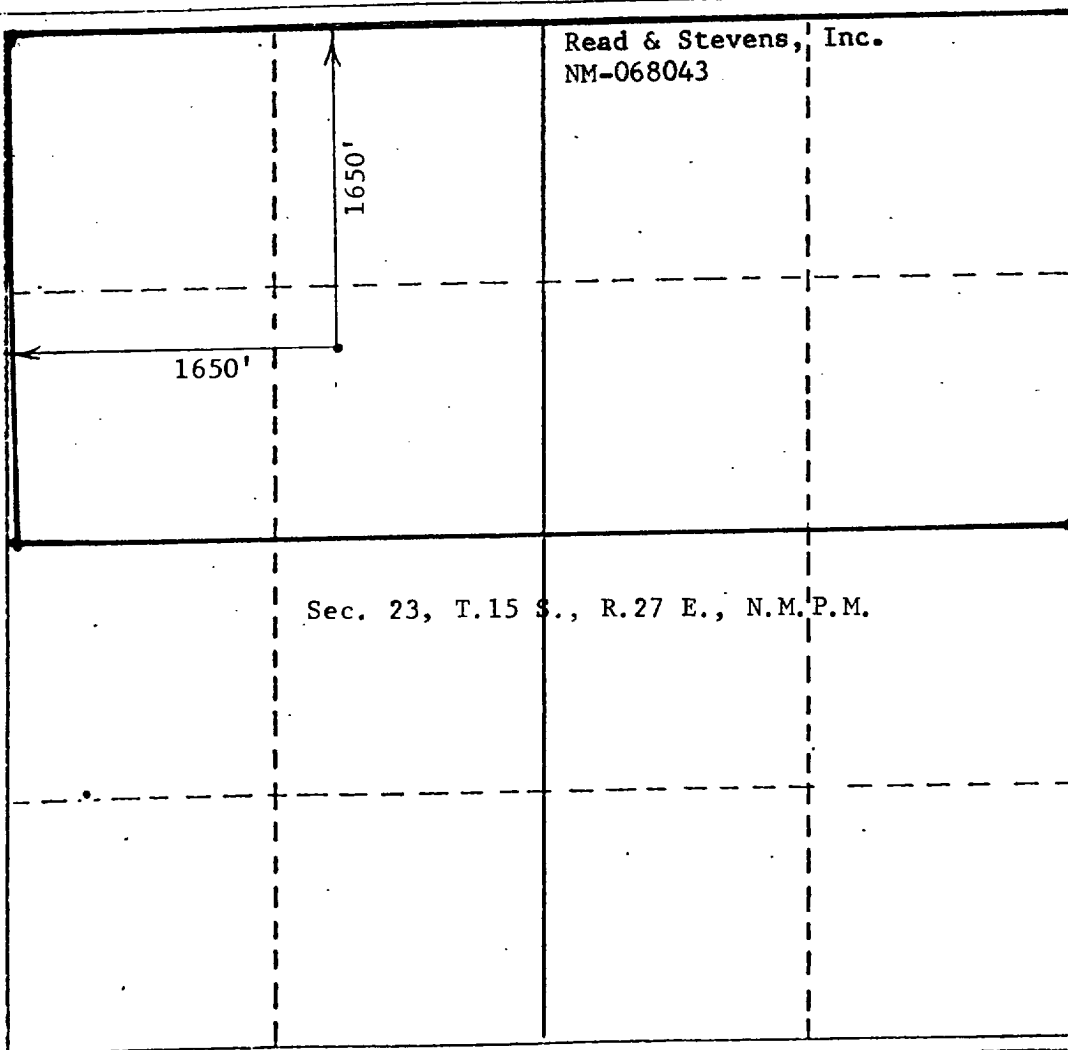
Operator Read & Stevens, Inc.			Lease Harris Federal		Well No. #9
Unit Letter F	Section 23	Township 15 South	Range 27 East	County Chaves	
Actual Footage Location of Well: 1650 feet from the North line and 1650 feet from the West line					
Ground Level Elev. 3516	Producing Formation Atoka		Pool Buffalo Valley Penn.		Dedicated Acreage: 320 Acres

1. Outline the acreage dedicated to the subject well by colored pencil or hatchure marks on the plat below.
2. If more than one lease is dedicated to the well, outline each and identify the ownership thereof (both as to working interest and royalty).
3. If more than one lease of different ownership is dedicated to the well, have the interests of all owners been consolidated by communitization, unitization, force-pooling, etc?

☐ Yes ☐ No If answer is "yes," type of consolidation _____

If answer is "no," list the owners and tract descriptions which have actually been consolidated. (Use reverse side of this form if necessary.) _____

No allowable will be assigned to the well until all interests have been consolidated (by communitization, unitization, forced-pooling, or otherwise) or until a non-standard unit, eliminating such interests, has been approved by the Division.



CERTIFICATION

I hereby certify that the information contained herein is true and complete to the best of my knowledge and belief.

George R. Smith

Name

George R. Smith

Position

Agent for

Company

Read & Stevens, Inc.

Date

I hereby certify that the well location shown on this plat was plotted from field notes of actual surveys made by me or under my supervision, and that the same is true and correct to the best of my knowledge and belief.

Date Surveyed

December 4, 1989

Registered Professional Engineer and/or Land Surveyor

John D. Jaquess
John D. Jaquess
Certificate No. 6290

6290

APPLICATION FOR DRILLING

READ & STEVENS, INC.
Harris Federal, Well No. 9
1650' FWL & 1650' FNL, Sec. 23-T15S-R27E
Chaves County, New Mexico
Lease No.: NM-068043
(Development Well)

In conjunction with Form 9-331C, Application for Permit to Drill subject well, Read & Stevens, Inc. submits the following items of pertinent information in accordance with USGS requirements:

1. The geologic surface formation is Permian with quaternary alluvium and other surficial deposits.
2. The estimated tops of geologic markers are as follows:

Queen	974'	Canyon	7560'
Glorieta	2753'	Strawn	8144'
Tubb	4422'	Atoka	8522'
Abo	5203'	Chester	8964'
Wolfcamp	6372'	Total Depth	9100'
Cisco	7176'		
3. The estimated depth at which anticipated water, oil, or gas formations are expected to be encountered:

Water: Approximately 200 - 400' for surface water.

Gas: Atoka: approximately 8730'.

Oil: San Andres at approximately 1670'.
4. Proposed Casing Program: See Form 9-331C.
5. Pressure Control Equipment: See Form 9-331C and Exhibit "E".
6. Mud Program: See Form 9-331C.
7. Auxiliary Equipment: Blowout preventer, gas detector, kelly cock, pit level monitor, flow sensors and stabbing valve.
8. Testing, Logging and Coring Program:

Drill Stem Tests: One possible in each of the following:

Strawn:	8144-8244'
Atoka:	8522-8622'

Logging: Gamma Ray: Surface to T. D.
FDC/CNL Int. Csg. to T. D.
Dual Ind. Laterolog: Int. Csg. to T. D.

Coring: None.
9. No abnormal pressures or temperatures are anticipated. In the event abnormal pressures are encountered the proposed mud program will be modified to increase the mud weight.
10. Anticipated starting date: March 10, 1982
Anticipated completion of drilling operations: Approx. 35 days.

R 26 E

R 27 E

R 28 E

R 29 E

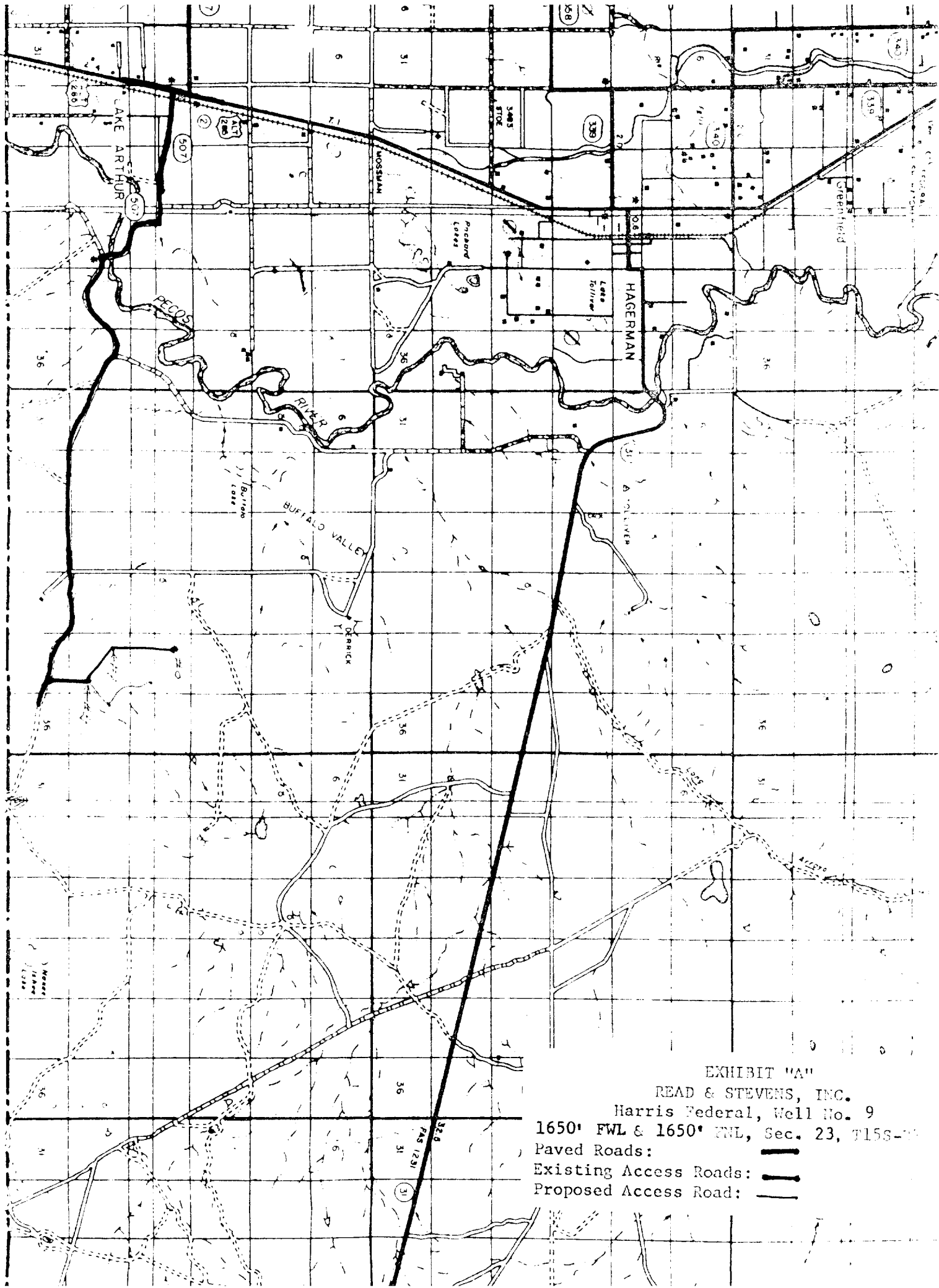





EXHIBIT "A"
READ & STEVENS, INC.
Harris Federal, Well No. 9
1650' FWL & 1650' FNL, Sec. 23, T15S-20E
Paved Roads: 
Existing Access Roads: 
Proposed Access Road: 

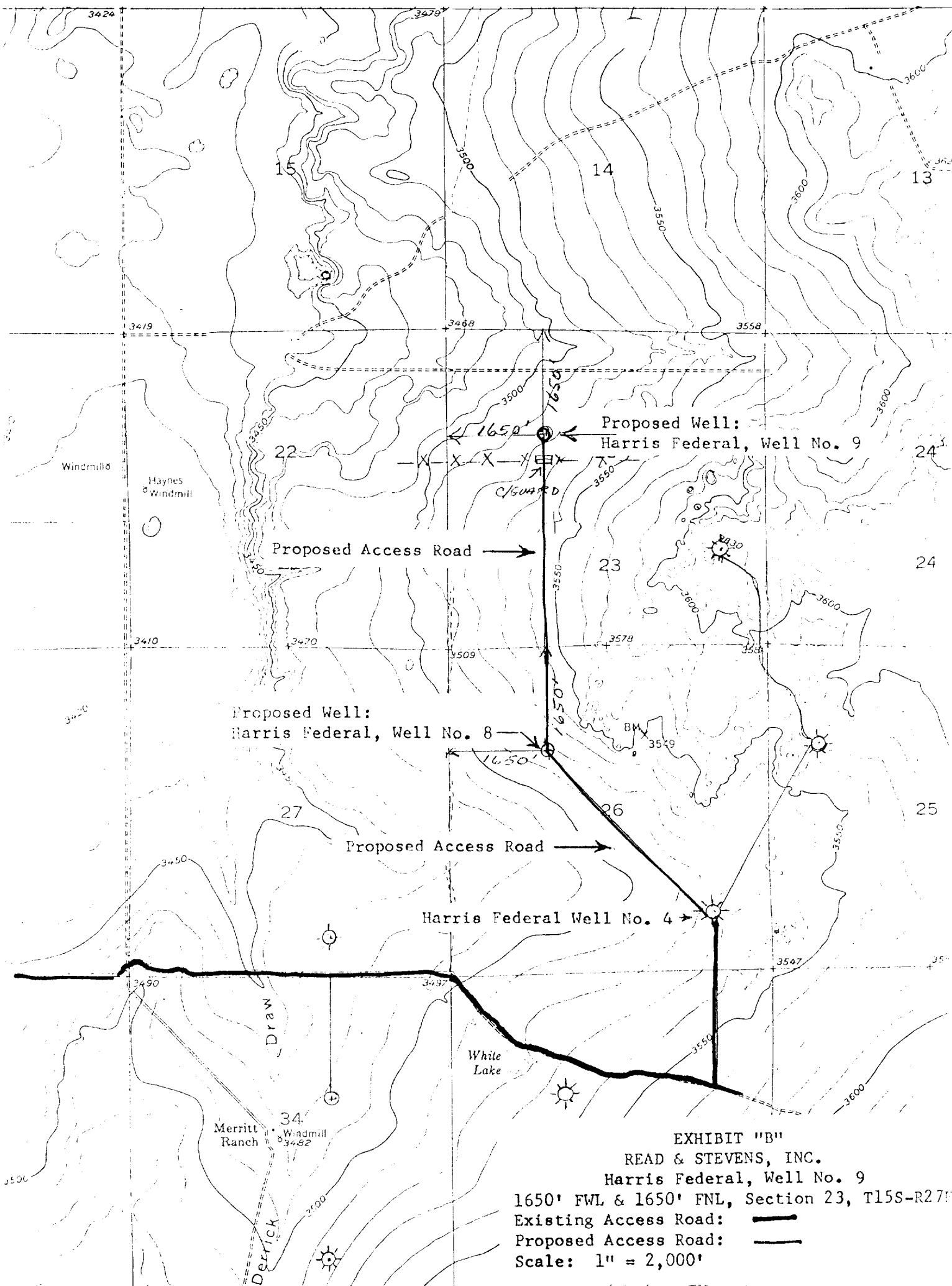




EXHIBIT "B"

READ & STEVENS, INC.

Harris Federal, Well No. 9

1650' FWL & 1650' FNL, Section 23, T15S-R27E

Existing Access Road: 

Proposed Access Road: 

Scale: 1" = 2,000'

SIERRA DRILLING CO. Rig #2

GL to Floor 132"

GL to Bottom on Rotary 116"

This Stack is 110.5"

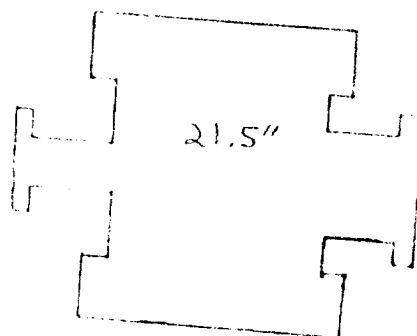
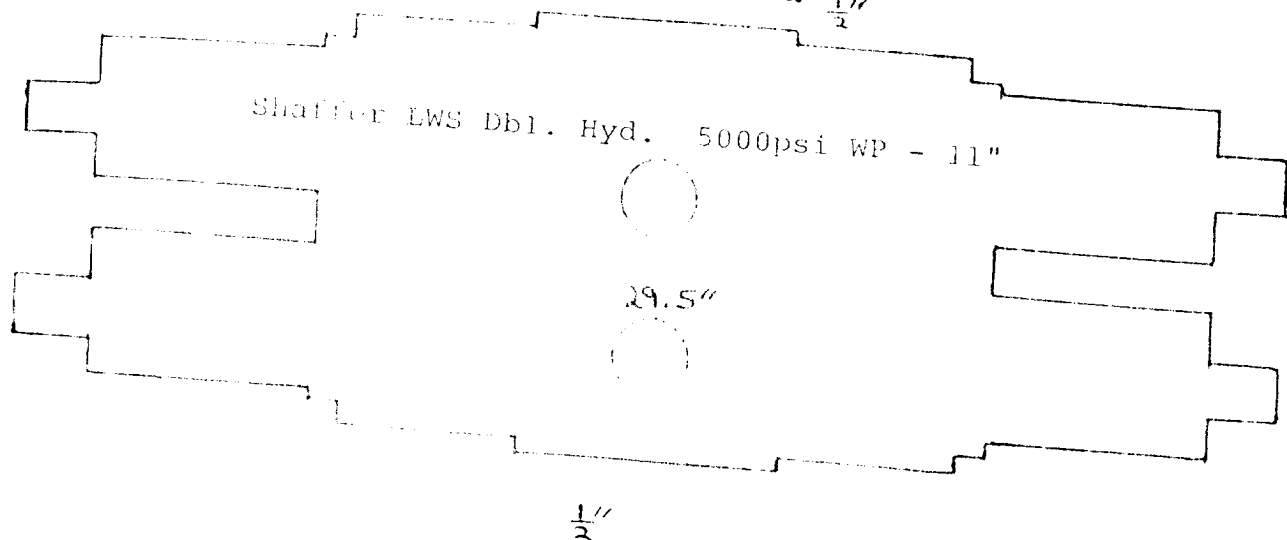
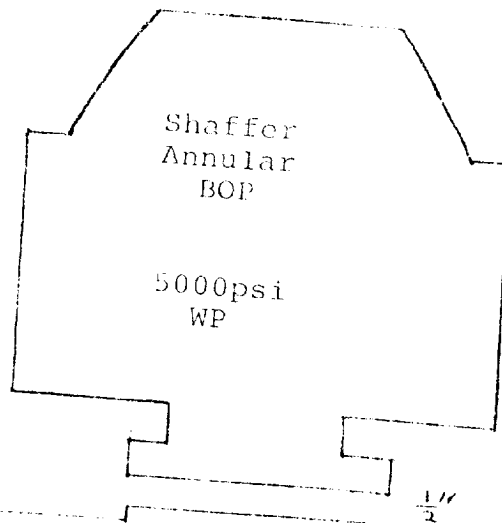
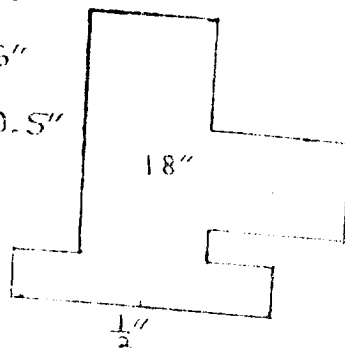


EXHIBIT "E"
READ & STEVENS, INC.
Blowout Preventer Spec.
Harris Federal, Well No. 9

- F. ONE (1) BEANOT SINGLE TANDEM (DUAL SCREEN) SHALE SHAKER
- G. THREE (3) MISSION MAGNUM 5" X 6" CENTRIFUGAL PUMPS POWERED BY 60 HP ELECTRIC MOTORS
- H. ONE (1) 500 BBL WATER TANK WITH 2 - 2" X 3" MISSION MAGNUM CENTRIFUGAL PUMPS - POWERED BY 20 HP ELECTRIC MOTORS
- I. ONE (1) 500 BBL DIESEL TANK WITH 2 - 1" X 1 1/2" MISSION CENTRIFUGAL PUMPS POWERED BY 1 HP ELECTRIC MOTORS
- J. ONE (1) 6" MISSION MUO HOOPER COMPLETE WITH MOUNTING BASE, VENTURI, NOZZEL, BUTTERFLY VALVE AND SACK TABLE

V B.O.P. EQUIPMENT

- A. ONE (1) 11" 5000# W.P. SHAFFER ANNULAR B.O.P.
 - B. ONE (1) 11" 5000# W.P. SHAFFER TYPE "LWS" HYDRAULIC OPERATED DOUBLE B.O.P.
 - C. ONE (1) 5000# W.P. CHOKE AND KILL MANIFOLD - SHAFFER EQUIPMENT FOR STANDARD SERVICE
- NOTE: ANNULAR AND DOUBLE FLAM B.O.P.'S HAS INTERNAL H2S TRIM
- D. ONE (1) 90-115 MELCO CLOSING UNIT - 90 GALLON COMPLETE WITH ACCUMULATORS AND REMOTE CONTROL UNITS

VI DRILL PIPE