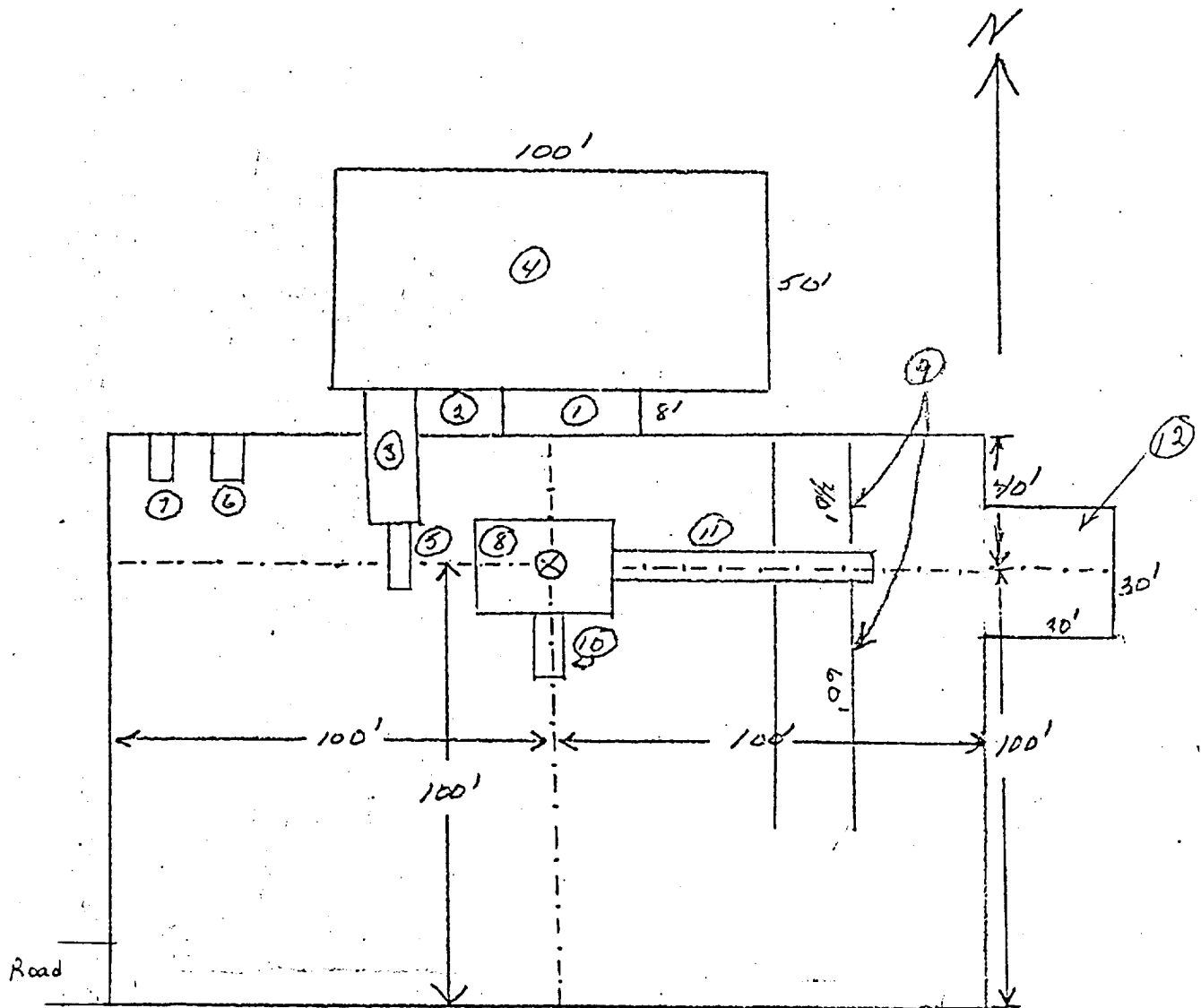


WEK DRILLING CO., INC.  
RIG #1 LOCATION & MUD PIT SPECS.



- |                            |                   |
|----------------------------|-------------------|
| (1) Shale Pit 30' x 8'     | (6) Water Tank    |
| (2) Mud Pit 20' x 8'       | (7) Fuel Tank     |
| (3) Suction Pit 30' x 8'   | (8) Rig           |
| (4) Reserve Pit 100' x 50' | (9) Pipe Racks    |
| (5) Pump                   | (10) Dog House    |
|                            | (11) Cat Walk 60' |
|                            | (12) Stinger      |

Schaeffer Type E 10" Series 900 Hydraulic BOP. The waste and debris from this well will be disposed of in a reserve pit and covered up.

Surface Use Plan  
Exhibit D