

NM OIL CONS. COMMISSION
Drawer DD
Artesia, NM

UNITED STATES DEPARTMENT OF THE INTERIOR

GEOLOGICAL SURVEY

NM OIL CONS. COMMISSION
SUBMIT A TRIPLICATE*
Conditions on reverse side
88210Form approved.
Budget Bureau No. 42-R1425.50-005-61971
C/S H

APPLICATION FOR PERMIT TO DRILL, DEEPEN, OR PLUG BACK

1a. TYPE OF WORK

DRILL ☒DEEPEN ☐PLUG BACK ☐

b. TYPE OF WELL

OIL WELL ☒GAS WELL ☐

OTHER

SINGLE ZONE ☒MULTIPLE ZONE ☐

2. NAME OF OPERATOR

Dalport Oil Corp.

3. ADDRESS OF OPERATOR

3471 First National Bank Bldg., Dallas, Texas 75202

4. LOCATION OF WELL (Report location clearly and in accordance with any State requirements.)*

At surface

990' FNL, 1880' FWL

At proposed prod. zone

Same

14. DISTANCE IN MILES AND DIRECTION FROM NEAREST TOWN OR POST OFFICE

16 miles north of Loco Hills

ARTESIA, OFFICE

15. DISTANCE FROM PROPOSED*

LOCATION TO NEAREST

PROPERTY OR LEASE LINE, FT.

(Also to nearest drlg. unit line, if any)

990'

18. DISTANCE FROM PROPOSED LOCATION*

TO NEAREST WELL, DRILLING, COMPLETED, OR APPLIED FOR, ON THIS LEASE, FT.

None

16. NO. OF ACRES IN LEASE

643.48

19. PROPOSED DEPTH

2,000

17. NO. OF ACRES ASSIGNED TO THIS WELL

40

20. ROTARY OR CABLE TOOLS

Rotary

21. ELEVATIONS (Show whether DF, RT, GR, etc.)

3847.5' GR

22. APPROX. DATE WORK WILL START*

Immediately

23.

PROPOSED CASING AND CEMENTING PROGRAM

SIZE OF HOLE	SIZE OF CASING	WEIGHT PER FOOT	SETTING DEPTH	QUANTITY OF CEMENT
12-1/4	8-5/8	24	215	175 Sx "C" + 2% c.c. CIRCULATE
7-7/8	4-1/2	10.5	2,000	125 Sx Lite, 125 "C", 50% Poz

Will cement 8-5/8" csg., circ. cement, WOC 18 hours, test at 600#/30". Natural mud will be used to 1700' where will mud-up. Queen will be cored and tested at approx. 1,825'. If productive, 4-1/2" will be cemented, and the Queen will be acidized with 500 gal. and fractured with 20,000 gal. gelled 2% KCl water, 18,500# 20-40 sand, and 5,000# 10-20 sand. A Shaffer BOP will be used. If well is dry, it will be plugged as per Federal regulation and location will be cleaned.

APPROVAL SUBJECT TO
GENERAL REQUIREMENTS AND
SPECIAL STIPULATIONS
ATTACHED

RECEIVED

MAR 14 1983

IN ABOVE SPACE DESCRIBE PROPOSED PROGRAM: If proposal is to deepen or plug back, give data on present productive zone and proposed new productive zone. If proposal is to drill or deepen directionally, give pertinent data on subsurface locations and measured and true vertical depths. Give blowout preventer program, if any.

24.

SIGNED

James A. Gillham

TITLE

Geologist

DATE

3-14-83

(This space for Federal or State office use)

PERMIT NO.

APPROVED

APPROVAL DATE

APPROVED BY

CONDITIONS OF APPROVAL

MAR 14 1983

JAMES A. GILLHAM
DISTRICT SUPERVISOR

TITLE

DATE

*See Instructions On Reverse Side

*Posted to PD
4-8-83*

NEW MEXICO OIL CONSERVATION COMMISSION
WELL LOCATION AND ACREAGE CERTIFICATION PLAT

Form O-100
Supersedes C-128
Effective 1-1-65

All distances must be from the outer boundaries of the Section

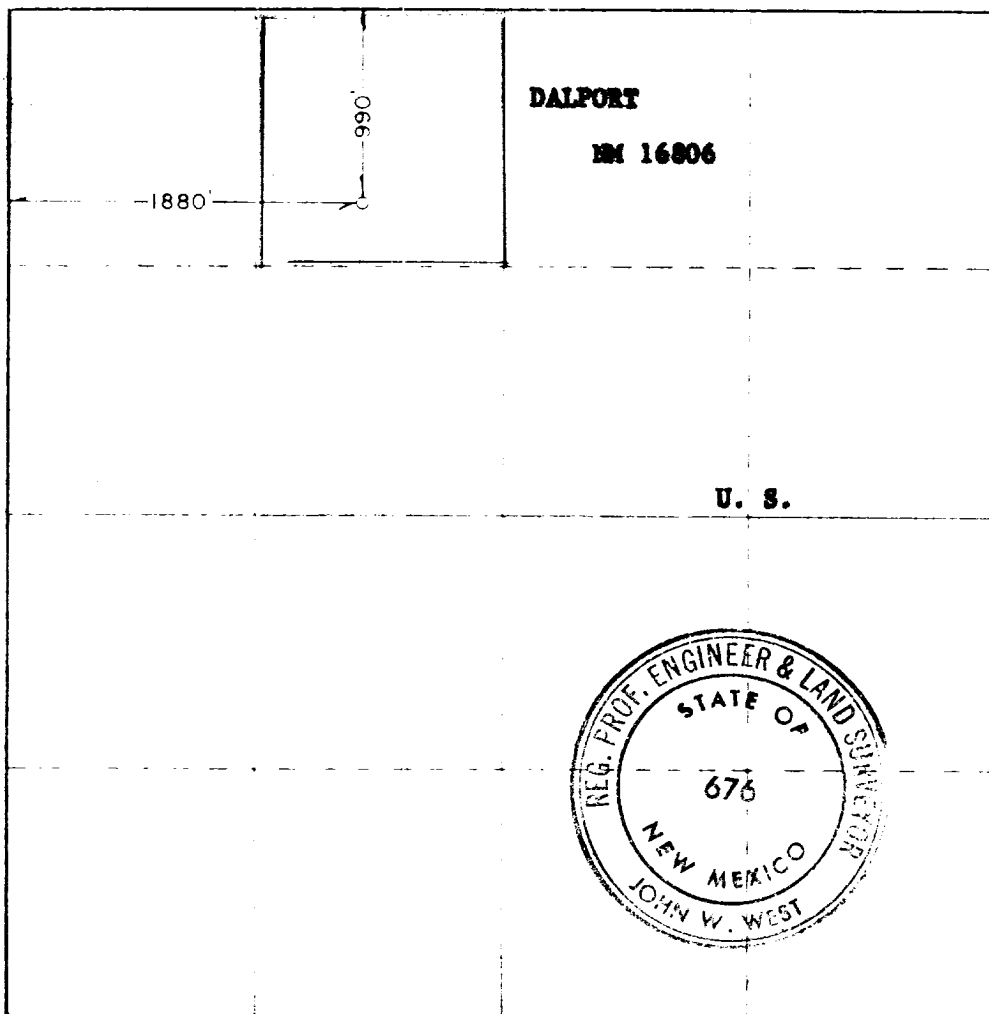
Operator Dalport Oil Corp.			Lease Ling Fed.			Acres 1		
Section C	Section 3	Township 13South	Range 29 East	County Chaves				
Approximate Location of Well								
990 feet from the north line and			1880 feet from the west line					
Section Survey Elev. 3847.5			Producing Formation Queen			Depth of Acreage 40		
			Wildcat					

1. Outline the acreage dedicated to the subject well by colored pencil or hatchure marks on the plat below.
2. If more than one lease is dedicated to the well, outline each and identify the ownership thereof (both as to working interest and royalty)
3. If more than one lease of different ownership is dedicated to the well, have the interests of all owners been consolidated by communitization, unitization, force-pooling, etc?

Yes ☐ No ☐ If answer is "yes" type of consolidation _____

If answer is "no" list the owners and tract descriptions which have actually been consolidated. (Use reverse side of this form if necessary.) _____

No allowable will be assigned to the well until all interests have been consolidated (by communitization, unitization, forced-pooling, or otherwise) or until a non-standard unit, eliminating such interests, has been approved by the Commission.



CERTIFICATION

I hereby certify that the information contained herein is true and complete to the best of my knowledge and belief.

Leon M. Lampert

Leon M. Lampert

Geologist

Dalport Oil Corp.

3-14-83

I hereby certify that the well location shown on this plat was plotted from field notes of actual surveys made by me or under my supervision and that the same is true and correct to the best of my knowledge and belief.

Date Surveyed
2/17/83

Registered Professional Engineer
No. 10101 JAMES J. WEST

John W. West

Certificate No.
John W. West, N.M. I.S. 676

130 660 90 1320 1650 1980 2310 2640 2000 1800 1000 500

DALPORT OIL CORPORATION
1134 THE 600 BUILDING
CORPUS CHRISTI, TEXAS 78473

APPLICATION FOR DRILLING

CODE 512-882-7863

DALPORT OIL CORPORATION
#1 Ling-Federal
990' FNL, 1880' FWL, Sec. 3, 15S-29E
Chaves County, New Mexico
Lease: NM 16806

In conjunction with Form 9-331C, Application for Permit to Drill subject well, Dalport Oil Corporation submits the following items of pertinent information in accordance with USGS requirements:

1. The geologic surface information is Mescalero Sands of recent age.

2. The estimated tops of geologic markers are as follows:

Rustler	200'
Salado	300'
Tansill	1010'
Yates	1070'
Seven Rivers	1210'
Queen	1827'

3. The estimated depths at which anticipated water, oil, or gas formations are expected to be encountered:

Water:	No water is anticipated based on cable tool holes in the area.
Oil:	Queen at approximately 1825 feet.
Gas:	None.

4. Proposed Casing Program: See Form 9-331C.

5. Pressure Control Equipment: See Form 9-331C and Exhibit "E".

6. Mud Program: See Form 9-331C.

7. Auxiliary Equipment: Blowout Preventer.

8. Testing, Logging and Coring Program:

Drillstem Test:	1 in the Queen at approx. 1825'
Coring:	1 in the Queen at approx. 1825'
Logging:	Gamma-Neutron Log after casing is set.

9. No abnormal pressures are anticipated. Maximum anticipated bottom hole pressure should be 400# in the Queen.

10. Anticipated starting date: Immediately.
Anticipated completion date: Approx. 14 days after starting date.

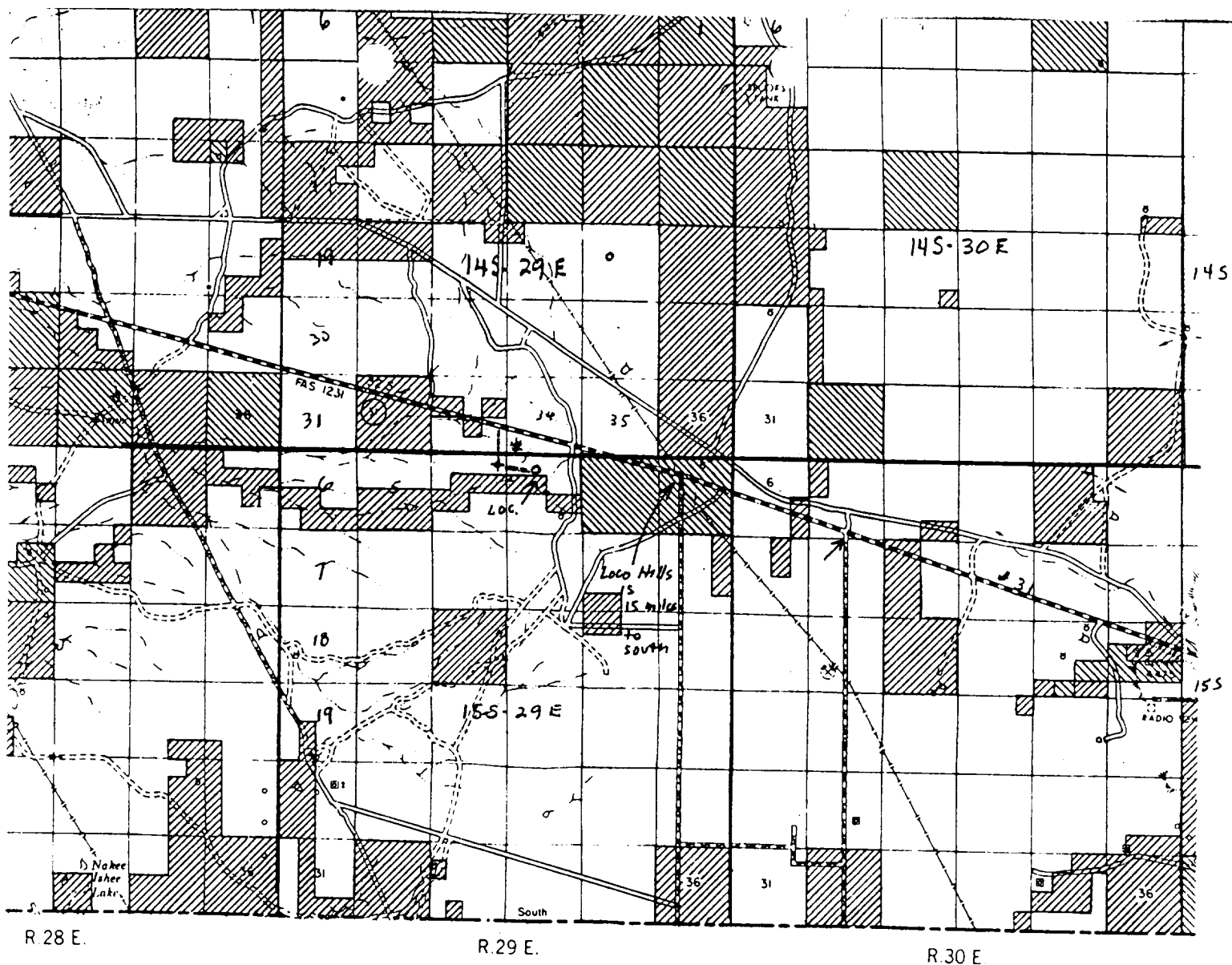


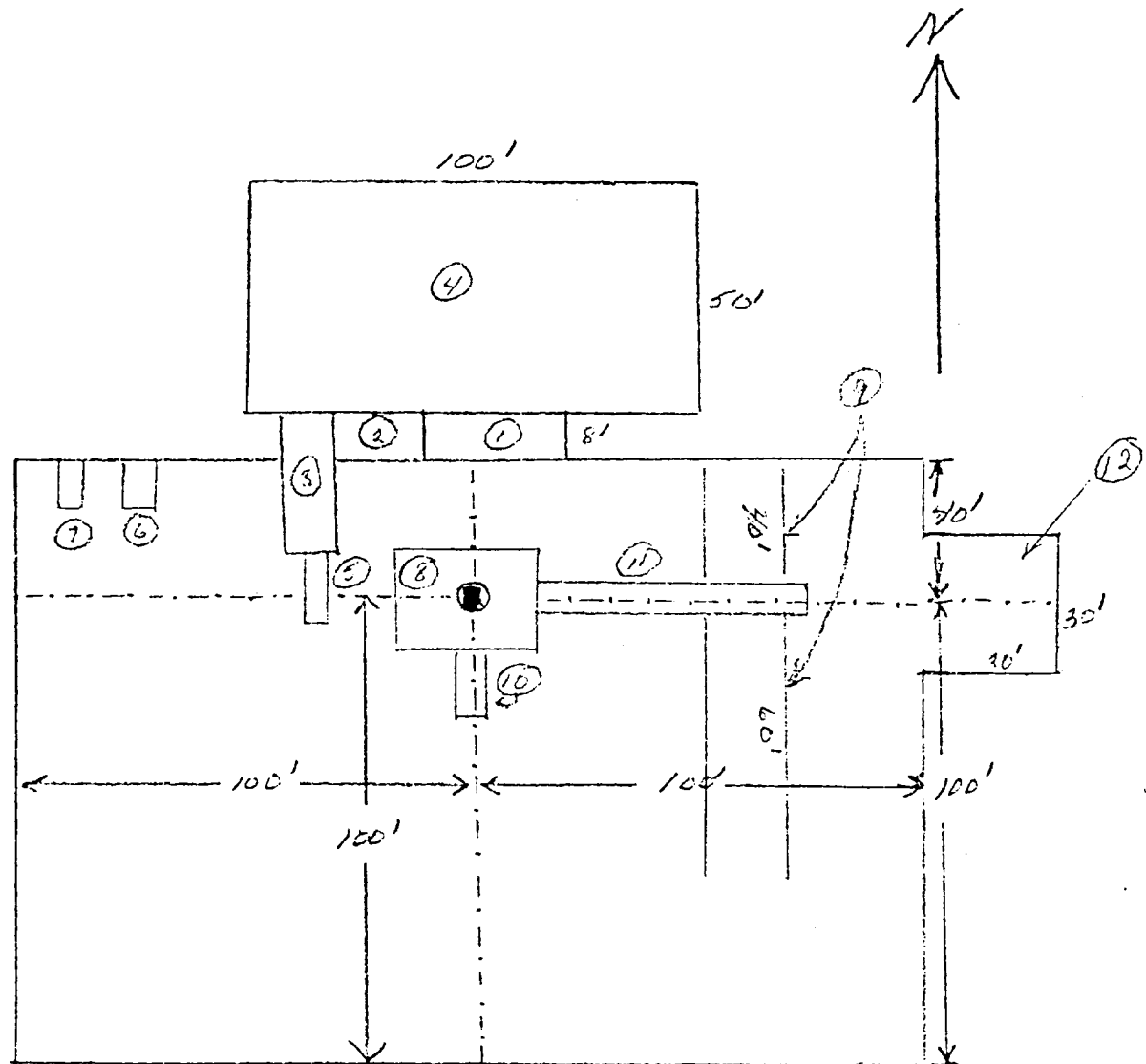
Exhibit A

Surface Use Plan

From Loco Hills, go North 15 miles.
 Turn west on #31, go 2 1/4 mi.
 Turn south thru cattle guard, go
 1/2 mi, turn east 1/2 mi to location.

From Hagerman, go east approx 22
 miles to cattle guard.

WEK DRILLING CO., INC.
RIG #1 LOCATION & MUD PIT SPECS.



- ① Shale Pit 30' x 8'
- ② Mud Pit 20' x 8'
- ③ Suction Pit 30' x 8'
- ④ Reserve Pit 100' x 50'
- ⑤ Pump

- ⑥ Water Tank
- ⑦ Fuel Tank
- ⑧ Rig
- ⑨ Pipe Racks
- ⑩ Dog House
- ⑪ Cat Walk 60'
- ⑫ Stinger

Surface Use Plan

Exhibit D

Schaeffer Type E 10" Series 900 Hydraulic BOP. The waste and debris from this well will be disposed of in a reserve pit and covered up.

WEK DRILLING CO., INC. - Rig 1 & 3.
BLOWOUT PREVENTER SPECIFICATION

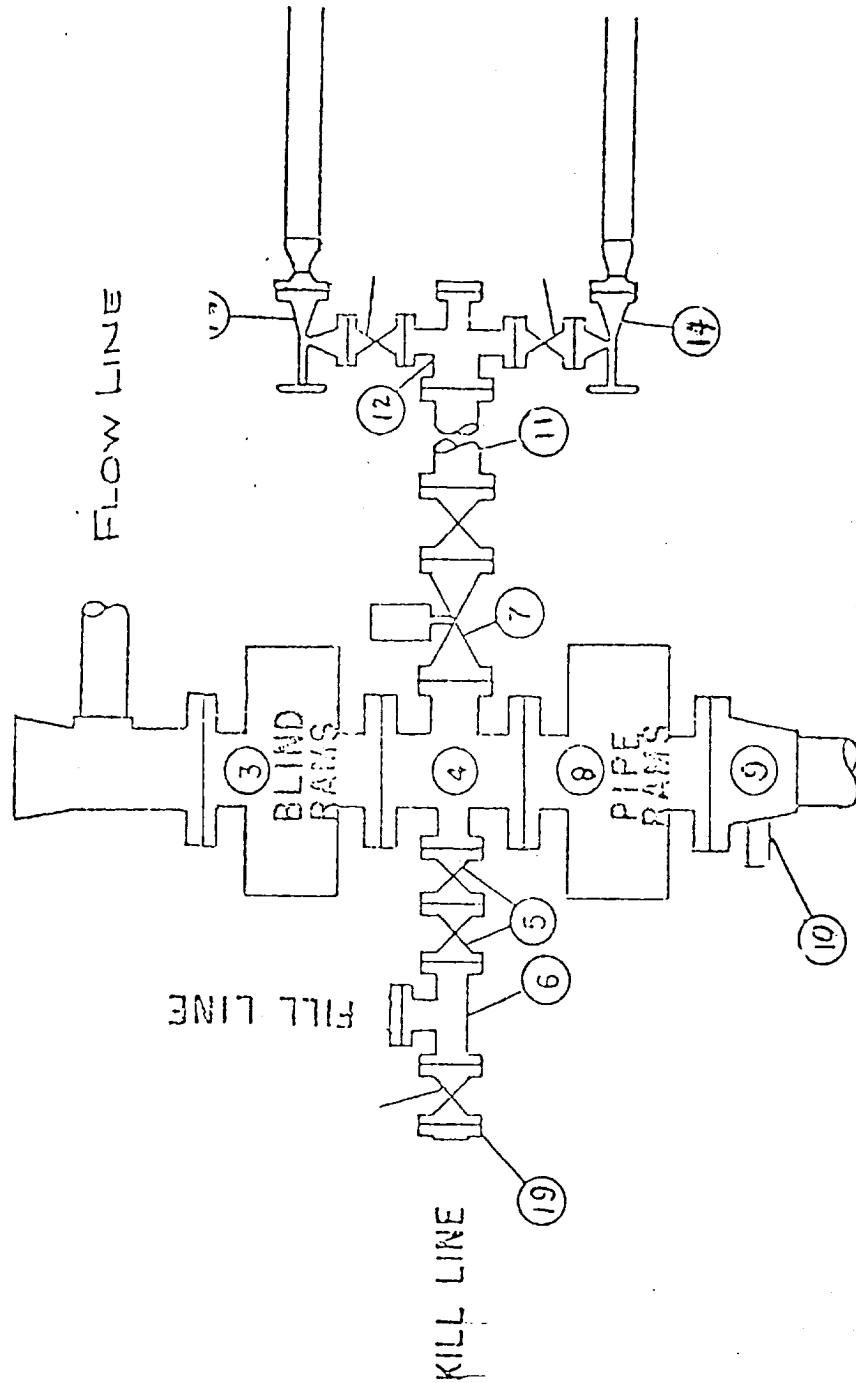


Exhibit E

Surface Use Pbn