

UNITED STATES
DEPARTMENT OF THE INTERIOR
GEOLOGICAL SURVEY

MAY 05 1983

APPLICATION FOR PERMIT TO DRILL, DEEPEN, OR PLUG BACK

1a. TYPE OF WORK

DRILL ☒DEEPEN ☐PLUG BACK ☐

b. TYPE OF WELL

OIL
WELL ☒GAS
WELL ☐OTHER ☐SINGLE
ZONE ☐MULTIPLE
ZONE ☐

2. NAME OF OPERATOR

McClellan Oil Corporation ✓

3. ADDRESS OF OPERATOR

P.O. Drawer 730, Roswell, New Mexico 88202

4. LOCATION OF WELL (Report location clearly and in accordance with any State requirements.)*

At surface

2020' FNL & 1780' FEL

At proposed prod. zone

14. DISTANCE IN MILES AND DIRECTION FROM NEAREST TOWN OR POST OFFICE*

40 miles southwest of Roswell, N.M.

15. DISTANCE FROM PROPOSED*

LOCATION TO NEAREST
PROPERTY OR LEASE LINE, FT.
(Also to nearest drig. unit line, if any)

16. NO. OF ACRES IN LEASE

2560

17. NO. OF ACRES ASSIGNED
TO THIS WELL

40

18. DISTANCE FROM PROPOSED LOCATION*
TO NEAREST WELL, DRILLING, COMPLETED,
OR APPLIED FOR, ON THIS LEASE, FT.

NA

19. PROPOSED DEPTH

3900'

20. ROTARY OR CABLE TOOLS

Rotary

21. ELEVATIONS (Show whether DF, RT, GR, etc.)

5018' G.L.

22. APPROX. DATE WORK WILL START*

March 30, 1983

23. PROPOSED CASING AND CEMENTING PROGRAM

SIZE OF HOLE	SIZE OF CASING	WEIGHT PER FOOT	SETTING DEPTH	QUANTITY OF CEMENT
* 17-1/2"	13-3/8"	48	200'	250 SX CIRCULATE
12-1/4"	8-5/8"	23	950' 1100'	500 SX CIRCULATE
7-7/8"	4-1/2"	10.5	3900'	350 SX

Will drill to approximately 3900' to test the Wolfcamp formation. If production is indicated will run casing and attempt completion.

Estimated Geologic tops: Glorieta - 860'
Tubb - 2258'
Abo - 2905'
Wolfcamp - 3550'

* If lost circulation is encountered above 200', 13-3/8" casing will be run. If no lost circulation occurs, the hole will be reduced to 12-1/4", drilled 950' and 8-5/8" casing will be run and cement circulated.

RECEIVED

IN ABOVE SPACE DESCRIBE PROPOSED PROGRAM: If proposal is to deepen or plug back, give data on present productive zone and proposed new productive zone. If proposal is to drill or deepen directionally, give pertinent data on subsurface locations and measured and true vertical depths. Give blowout preventer program, if any.

24.

SIGNED

Mark McClellan

TITLE

Geologist

OIL & GAS

MINERALS MGMT. SERVICE

DATE March 1, 1983

(This space for Federal or State office use)

ROSWELL, NEW MEXICO

PERMIT NO.

APPROVAL DATE

APPROVED BY

A. D. Lopez

TITLE

DATE

5/4/83

CONDITIONS OF APPROVAL, IF ANY

All distances must be from the outer boundaries of the Section.

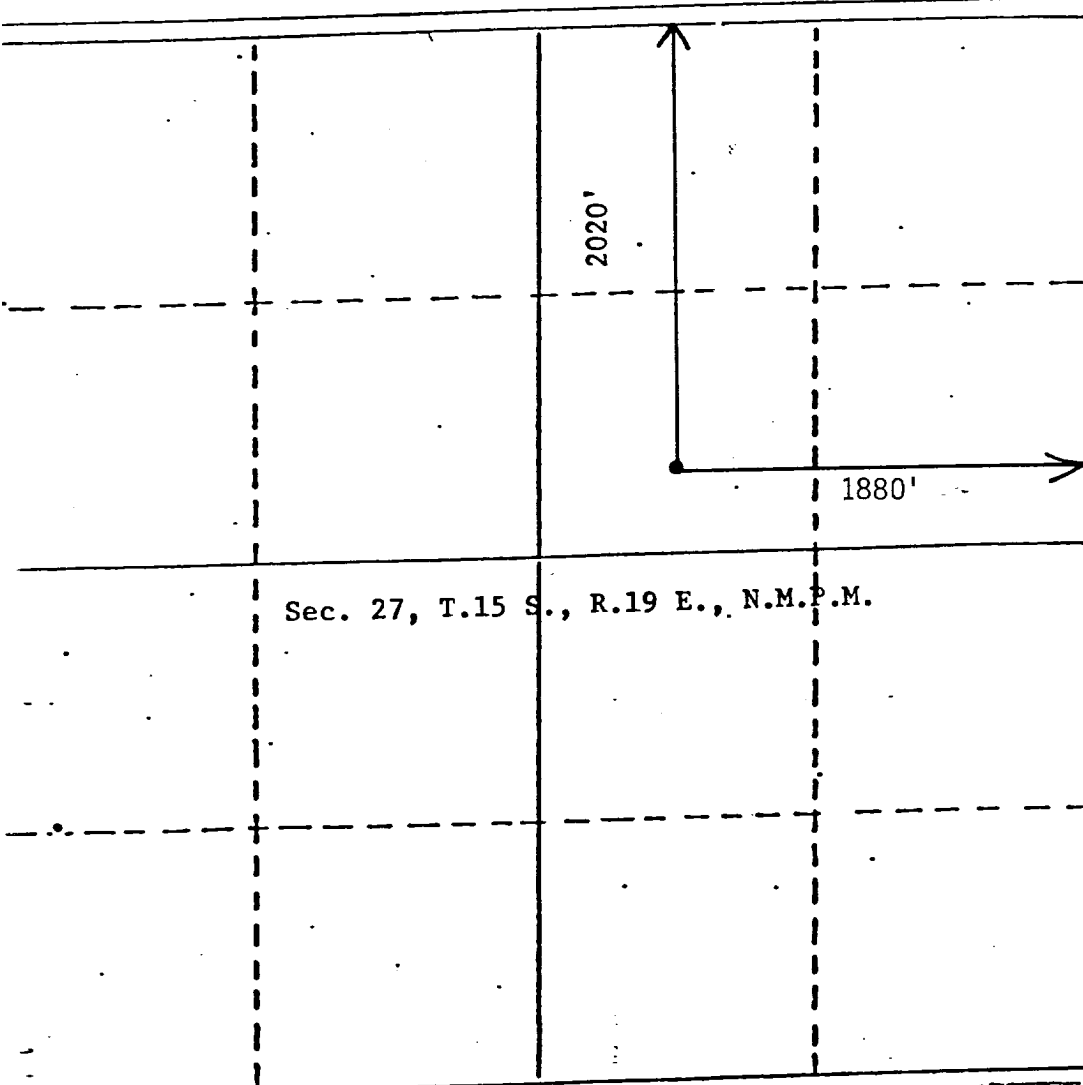
Owner McClellan Oil Corp.			Lease Gragg B		Well No. #1
Letter G	Section 27	Township 15 South	Range 19 East	County Chaves	
Well Postage Location of Well: 2020 feet from the North line and 1880' feet from the East line					
Surface Elev. 5018	Producing Formation Wolfcamp		Pool Wildcat	Dedicated Acreage: 40 Acres	

1. Outline the acreage dedicated to the subject well by colored pencil or hatchure marks on the plat below.
2. If more than one lease is dedicated to the well, outline each and identify the ownership thereof (both as to working interest and royalty).
3. If more than one lease of different ownership is dedicated to the well, have the interests of all owners been consolidated by communitization, unitization, force-pooling, etc?

☐ Yes ☐ No If answer is "yes," type of consolidation _____

If answer is "no," list the owners and tract descriptions which have actually been consolidated. (Use reverse side of this form if necessary.) _____

No allowable will be assigned to the well until all interests have been consolidated (by communitization, unitization, forced-pooling, or otherwise) or until a non-standard unit, eliminating such interests, has been approved by the Division.



CERTIFICATION

I hereby certify that the information contained herein is true and complete to the best of my knowledge and belief.

Mark McClellan

Name
Mark McClellan

Position
Geologist

Company
McClellan Oil Corporation

Date
February 8, 1983

I hereby certify that the well location shown on this plat was plotted from field notes of actual surveys made by me or under my supervision, and that the same is true and correct to the best of my knowledge and belief.

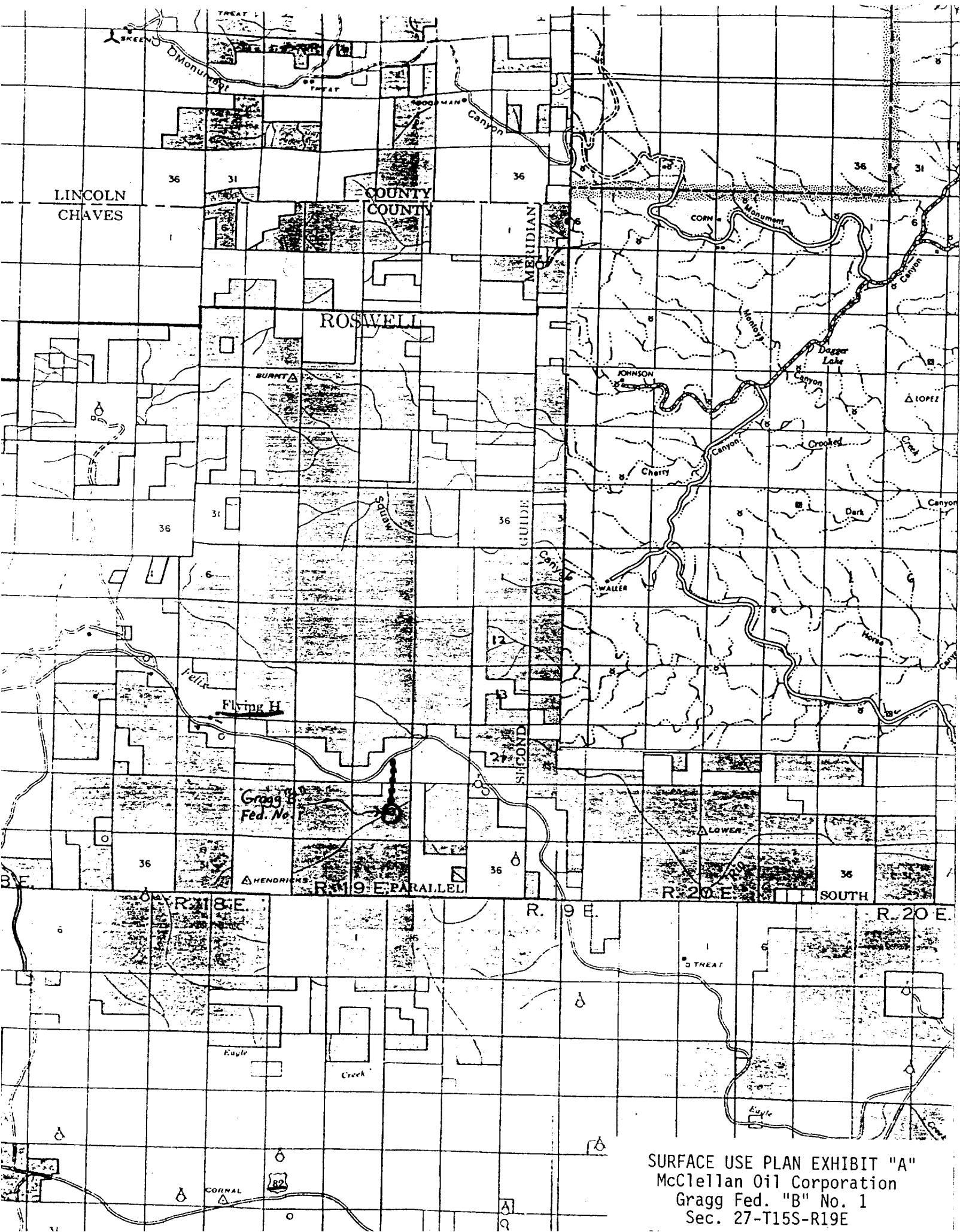
JOHN D. JAQUSS
NEW MEXICO
December 24, 1983
Registered Professional Engineer
and/or Land Surveyor
John D. Jaquess, P.E. & L.S.
Certificate No. 6290

REQUIREMENTS
(NTL-6)

1. Location: Sec. 27-T15S-R19E, 2020' FNL & 1780' FEL
2. Elevation: 5018' G.L.
3. Geologic name of surface formation: See Archaeological Report
4. Type of drilling rig and associated equipment: Rotary
5. Proposed drilling depth and objective formation: 3900' Wolfcamp
6. Estimated tops of geologic markers:

Yates _____	San Andres _____	Abo <u>2905'</u>
7-Rivers _____	Glorieta <u>860'</u>	Wolfcamp <u>3550'</u>
Queen _____	Tubb <u>2258'</u>	
7. Estimated depths of any oil, water, or gas: Possible oil: 3550'-3900'
- 8-9. Proposed casing program:

<u>13-3/8"</u> @ <u>200'</u> Grade <u>H-40</u> Wt. <u>48</u> Type Cement _____ Class <u>"C"</u>
<u>8-5/8"</u> @ <u>950'</u> Grade <u>H-40</u> Wt. <u>23</u> Type Cement _____ Class <u>"C"</u>
<u>4-1/2"</u> @ <u>3900'</u> Grade <u>J-55</u> Wt. <u>10.5</u> Type Cement _____ Class <u>"C"</u> 50-50 Poz _____
10. Specifications for pressure control equipment and testing procedures: 10" - 3000 psi Schaffer Double Ram
11. Type and characteristics of drilling fluids: Native mud to top of Abo. Mud up with salt base gel; 35 Visc., 15 cc water loss, 10 lb/gal mud.
12. Testing, logging, and coring programs: No testing or coring is anticipated. Will run Compensated Neutron - Compensated Density, Dual Laterolog with micro SFL gamma ray logs.
13. Anticipated abnormal pressures or temperature: None anticipated.
14. Anticipated commencement and completion date: March 30, 1983 - April 15, 1983
15. Other pertinent information: None



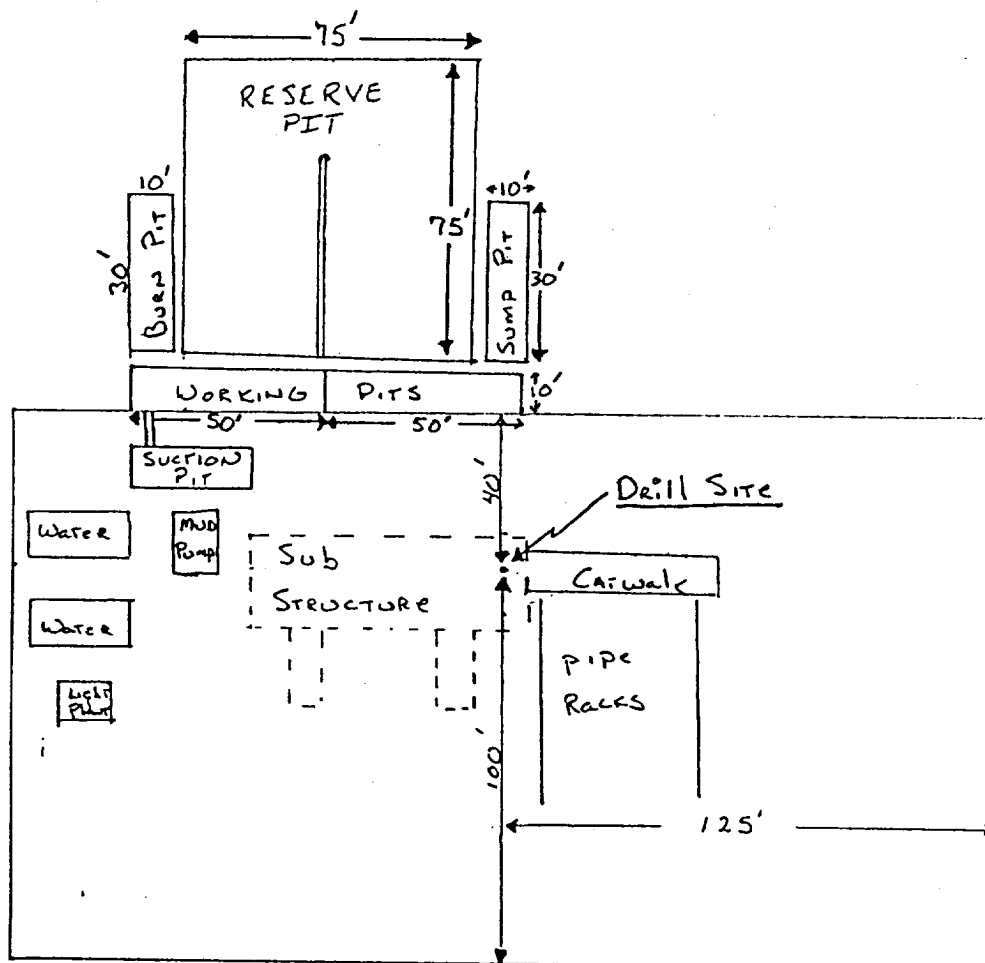
SURFACE USE PLAN EXHIBIT "A"
McClellan Oil Corporation
Gragg Fed. "B" No. 1
Sec. 27-T15S-R19E

McCLELLAN OIL CORPORATION
SUGGESTED PAD DIMENSIONS

Reserve Pits 4 ft. deep, plastic lined

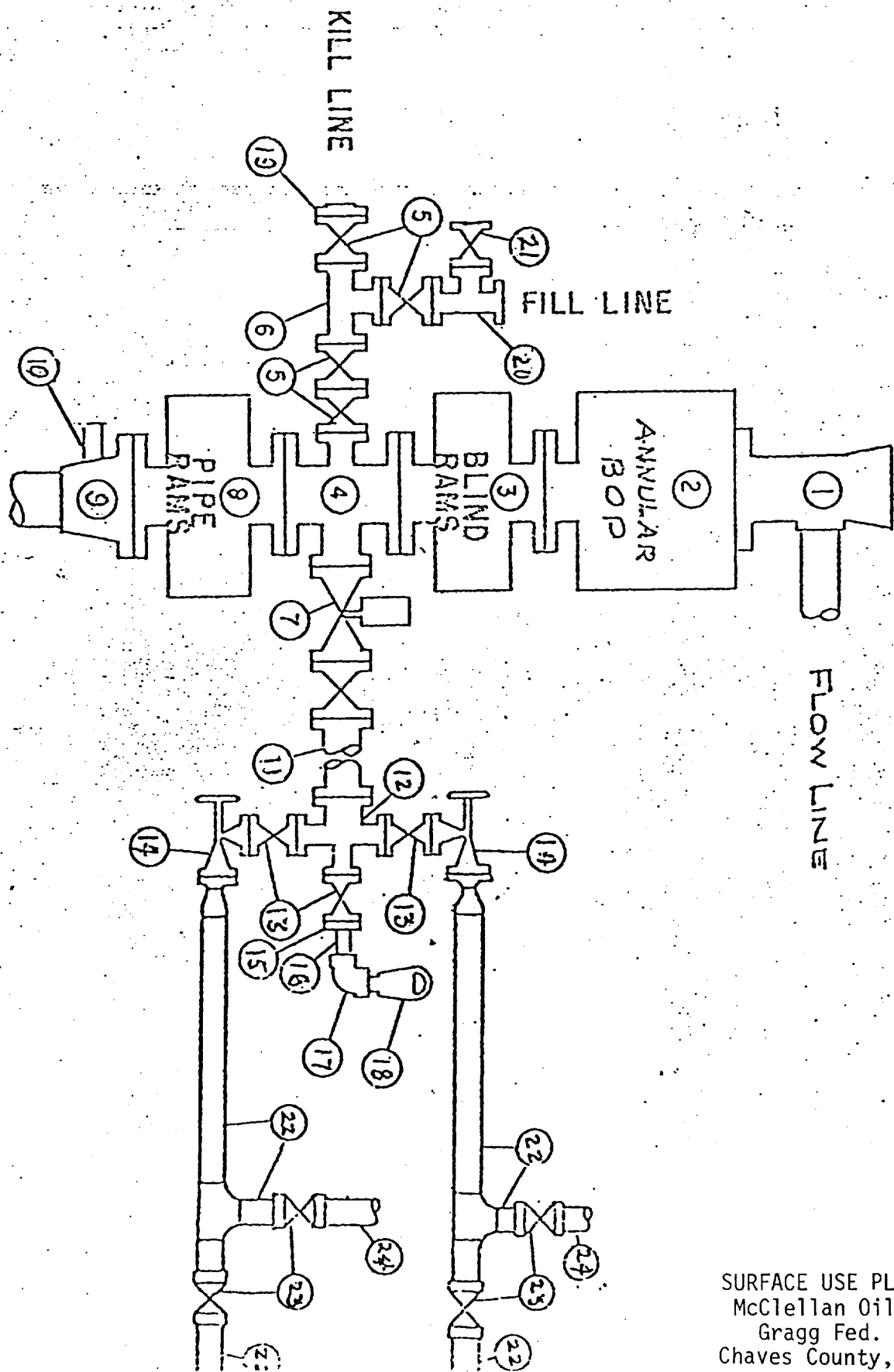
Working pits 5 ft. deep

No cellar



Scale 1" = 50'

BLOWOUT PREVENTER SPECIFICATION



SURFACE USE PLAN EXHIBIT "E"
 McClellan Oil Corporation
 Gragg Fed. "B" No. 1
 Chaves County, New Mexico