

NM OIL CONS. COMMISSION

Dri : DD

Artesia, NM 88210

UNITED STATES DEPARTMENT OF THE INTERIOR GEOLOGICAL SURVEY

SUBMIT IN TRIPLICATE*

(Other instructions on reverse)

Form approved.

Budget Bureau No. 42-R1425

30-005-61995

Form 9-331 C
(May 1963)

RECEIVED

MAY 04 1983

APPLICATION FOR PERMIT TO DRILL, DEEPEN, OR PLUG BACK

1a. TYPE OF WORK

DRILL ☒

DEEPEN ☐

PLUG BACK ☐

b. TYPE OF WELL

OIL WELL ☐

GAS WELL ☒

OTHER ☐

SINGLE ZONE ☐

MULTIPLE ZONE ☐

2. NAME OF OPERATOR

Read & Stevens, Inc. ✓

3. ADDRESS OF OPERATOR

P. O. Box 1518 Roswell, New Mexico 88201

4. LOCATION OF WELL (Report location clearly and in accordance with any State requirements*)

At surface 1980' FNL & 660' FEL

At proposed prod. zone

Same

14. DISTANCE IN MILES AND DIRECTION FROM NEAREST TOWN OR POST OFFICE

Approximately 9 miles East of Lake Arthur, NM

15. DISTANCE FROM PROPOSED* LOCATION TO NEAREST PROPERTY OR LEASE LINE, FT.

660'

16. NO. OF ACRES IN LEASE

880

17. NO. OF ACRES ASSIGNED TO THIS WELL

320

18. DISTANCE FROM PROPOSED* LOCATION TO NEAREST WELL, DRILLING, COMPLETED, OR APPLIED FOR, ON THIS LEASE, FT.

N/A

19. PROPOSED DEPTH

9100'

20. ROTARY OR CABLE TOOLS

Rotary

21. ELEVATIONS (Show whether DF, RT, GR, etc.)

3515 GR

22. APPROX. DATE WORK WILL START*

July 15, 1983

23.

PROPOSED CASING AND CEMENTING PROGRAM

SIZE OF HOLE	SIZE OF CASING	WEIGHT PER FOOT	SETTING DEPTH	QUANTITY OF CEMENT
17 1/2"	13 3/8"	54.7#	400'	400 Sx "C" circulated to surface
11"	8 5/8"	24.0#	1700'	250 Sx "H" + 200 Sx "C" circulated
7 7/8"	4 1/2"	10.5, 11.6 #	9100'	500 Sx "H"

Mud Program:

0' - 400' Spud mud with magcobar gel and lime. If seepage is noted, add lost circulation material. If circulation is lost, dry drill to 400' and set casing for surface.

400' - 5,200' Fresh water and native mud. Mud wt. 8.4#, Vis. 30-32, WL no control.

5,200' - 8,000' Magcogel and oil type drilling fluid. Mud wt. 8.5 - 8.8#, Vis. 30-32, 3-4% oil, WL no control.

8,000' - 9,100' Fresh water, low solids spersene mud system with Magcogel and Magco CMC. Mud wt. 9.0 - 9.5#, Vis. 40 - 45, WL 10 or below, PH. 9 - 9.5.

BOP Program: At 1700', install and test to 5,000#, pipe rams, blind rams (middle) bag-type preventer and choke manifold. BOP accumulator volume will be sufficient to operate the bag preventer and blind rams with a snap-action through the close, open close sequence.

Gas not dedicated.

IN ABOVE SPACE DESCRIBE PROPOSED PROGRAM: If proposal is to deepen or plug back, give data on present productive zone and proposed new productive zone. If proposal is to drill or deepen directionally, give pertinent data on subsurface locations and measured and true vertical depths. Give blowout preventer program, if any.

24.

Agent for:

Read & Stevens, Inc.

DATE April 20, 1983

SIGNED

Richard S. Smith

TITLE

(This space for Federal or State office use)

PERMIT NO.

APPROVAL DATE

APPROVED BY

P. O. Lopez

TITLE

DATE

4/29/83

CONDITIONS OF APPROVAL, IF ANY

Posted a log
FD-127 of Back
5-6-83

STATE OF NEW MEXICO
ENERGY AND MINERALS DEPARTMENT

SANTA FE, NEW MEXICO 87501

All distances must be from the outer boundaries of the Section.

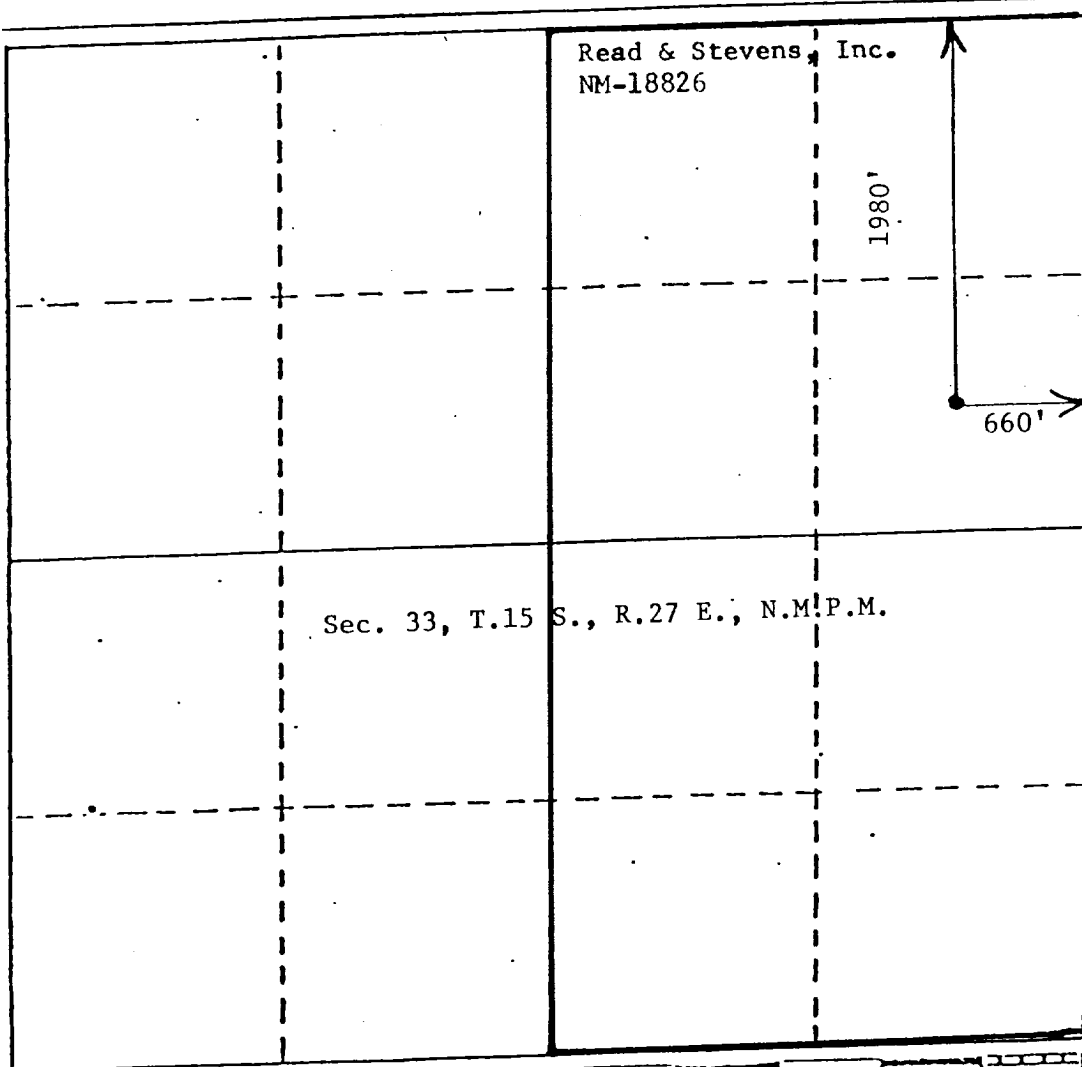
Operator Read & Stevens		Lease Diamond Federal		Well No. #1
Well Letter H	Section 33	Township 15 South	Range 27 East	County Chaves
Actual Postage Location of Well:				
1980 feet from the North line and		660 feet from the East line		
Ground Level Elev. 3515	Producing Formation Atoka	Pool Undesignated Diamond Mound	Dedicated Acreage 320 Acres	

1. Outline the acreage dedicated to the subject well by colored pencil or hatchure marks on the plat below.
2. If more than one lease is dedicated to the well, outline each and identify the ownership thereof (both as to working interest and royalty).
3. If more than one lease of different ownership is dedicated to the well, have the interests of all owners been consolidated by communitization, unitization, force-pooling, etc?

☐ Yes ☐ No If answer is "yes," type of consolidation _____

If answer is "no," list the owners and tract descriptions which have actually been consolidated. (Use reverse side of this form if necessary.) _____

No allowable will be assigned to the well until all interests have been consolidated (by communitization, unitization, forced-pooling, or otherwise) or until a non-standard unit, eliminating such interests, has been approved by the Division: _____



CERTIFICATION

I hereby certify that the information contained herein is true and complete to the best of my knowledge and belief.

George R. Smith

Name
George R. Smith

Position
Agent for:

Company
Read & Stevens, Inc.

Date
April 20, 1983

I hereby certify that the well location shown on this plat was plotted from field notes of actual surveys made by me or under my supervision, and that the same is true and correct to the best of my knowledge and belief.

Date Surveyed
March 31, 1983

Registered Professional Engineer
and/or Land Surveyor

John D. Jaquess, E.C. & L.S.
Certificate No. 6290

APPLICATION FOR DRILLING

READ & STEVENS, INC.
Diamond Federal, Well No. 1
1980' FNL & 660' FEL, Sec. 33-T15S-R27E
Chaves County, New Mexico
Lease No.: NM-18826
(Development Well)

In conjunction with Form 9-331C, Application for Permit to Drill subject well, Read & Stevens, Inc. submits the following items of pertinent information in accordance with MMS/BLM requirements:

1. The geologic surface formation is recent Permian with quaternary alluvium and other surficial deposits.
2. The estimated tops of geologic markers are as follows:

Queen	878'	Canyon	7502'
San Andres	1615'	Strawn	8053'
Glorieta	2652'	Atoka	8455'
Tubb	4331'	Mississippi	8761'
Abo	5105'	Chester	8881'
Wolfcamp	6275'	Total depth	9100'
Cisco	7103'		
3. The estimated depth at which anticipated water, oil or gas formations are expected to be encountered:

Water: Surface water in sands from surface to 300'±.

Oil: San Andres at approximately 1650'.

Gas: Atoka between 8600' and 8700'.
4. Proposed Casing Program: See Form 9-331C.
5. Pressure Control Equipment: See Form 9-331C, and Exhibit "E".
6. Mud Program: See Form 9-331C.
7. Auxiliary Equipment: Blowout preventer, gas detector, kelly cock, pit level monitor, flow sensors and stabbing valve.
8. Testing, Logging and Coring Program:

Drill Stem Tests: One possible in each of the following:

Strawn:	8053' - 8153'
Atoka:	8600' - 8700'

Logging: Gamma Ray: Surface to T. D.
FDC/CNL: Int. Csg. to T. D.
Dual Ind. Laterolog: Int. Csg. to T. D.

Coring: None.
9. No abnormal pressures or temperatures are anticipated. In the event abnormal pressures are encountered the proposed mud program will be modified to increase the mud weight.
10. Anticipated starting date: July 15, 1983.
Anticipated completion of drilling operations: Approximately 35 days.

R 27E

R 28E

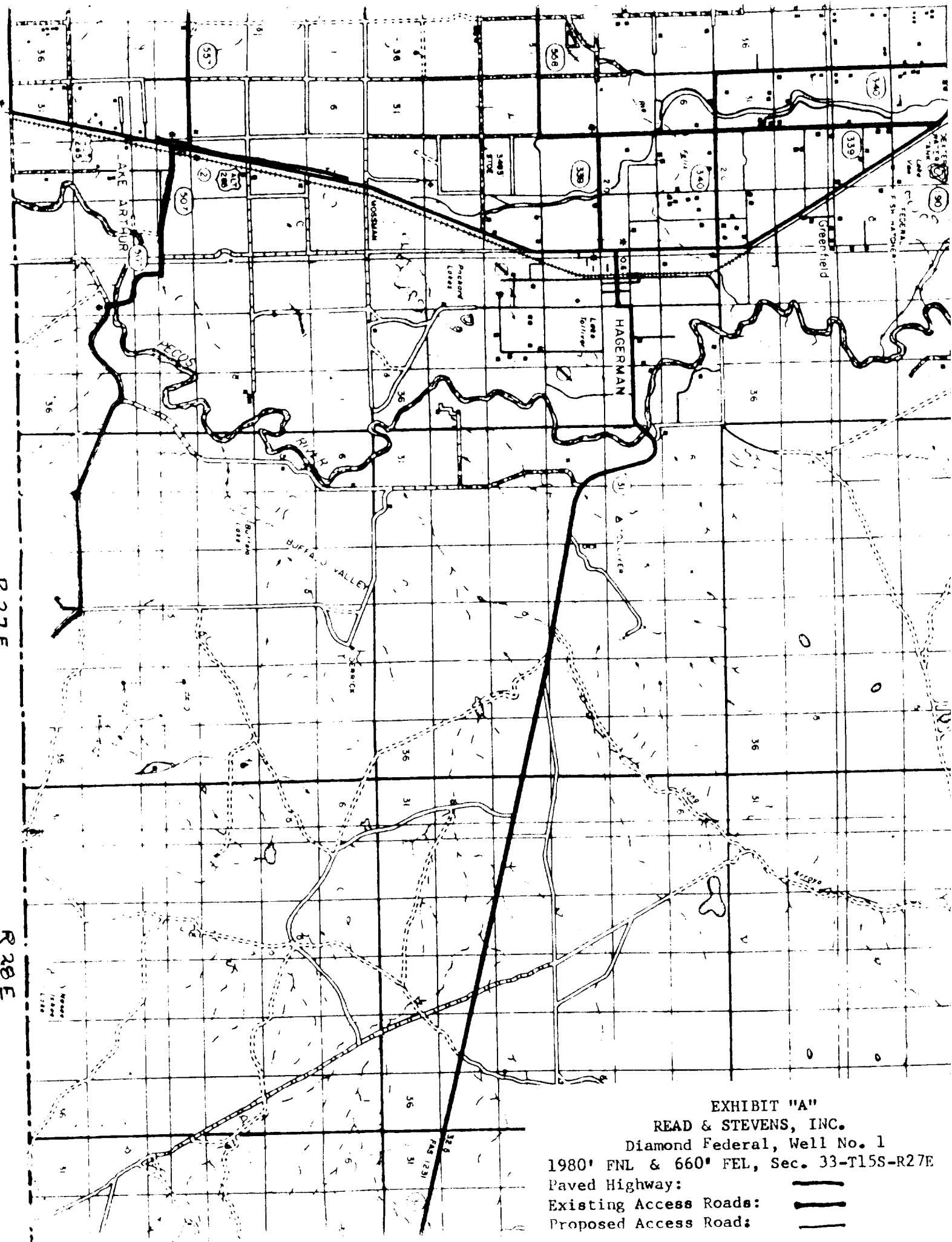

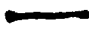



EXHIBIT "A"
 READ & STEVENS, INC.
 Diamond Federal, Well No. 1
 1980' FNL & 660' FEL, Sec. 33-T15S-R27E
 Paved Highway: 
 Existing Access Roads: 
 Proposed Access Road: 

SIERRA Drilg. Co.
Rig #2

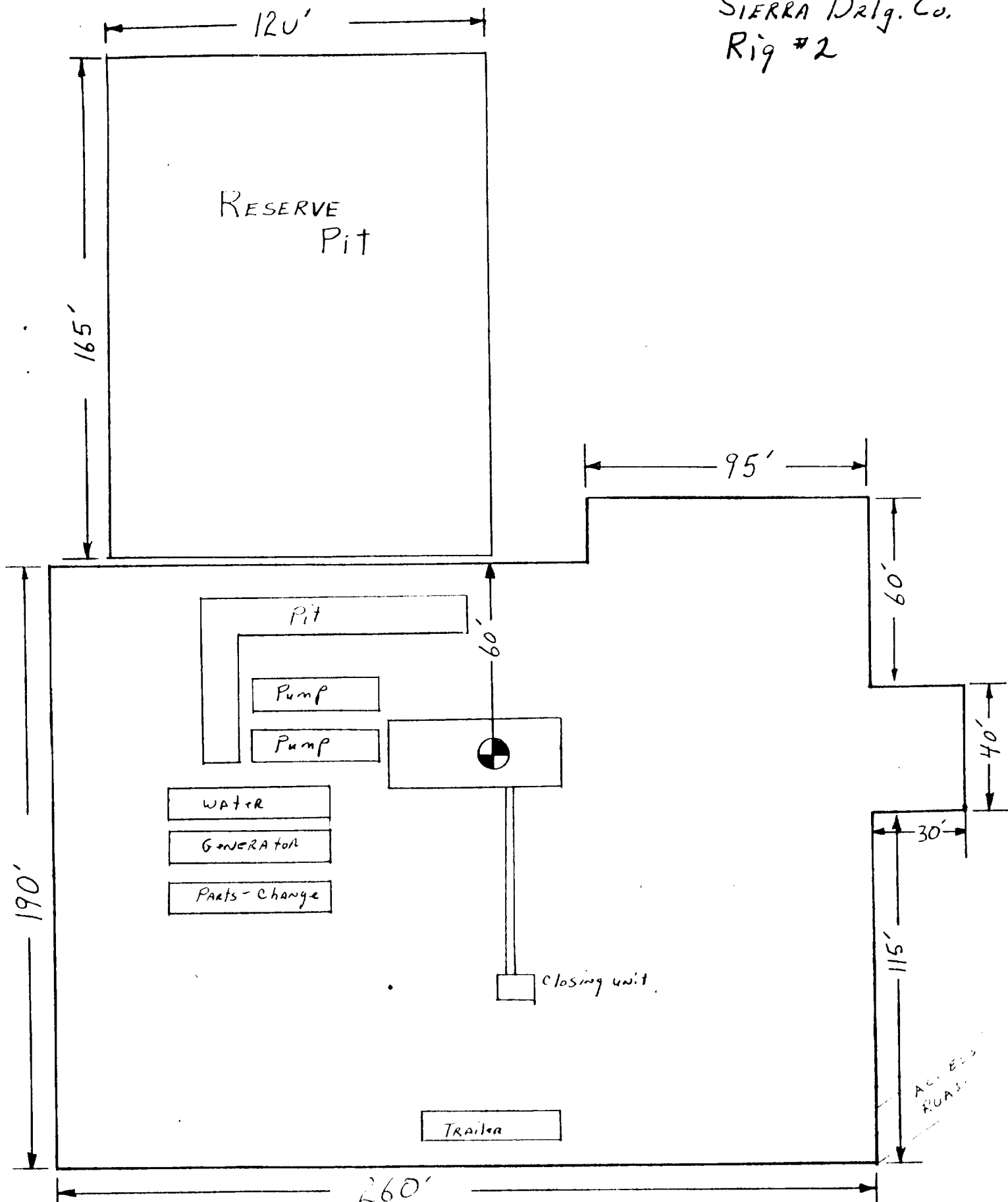


EXHIBIT "D"
READ & STEVENS, INC.
Diamond Federal, Well No. 1
Rig Layout

SIERRA DRILLING CO. Rig #2

6L to Floor 132"

6L to Bottom of Rotary 116"

This Stack is 110.5"

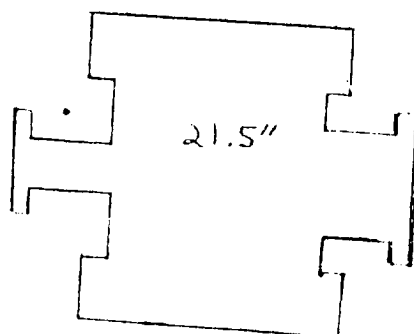
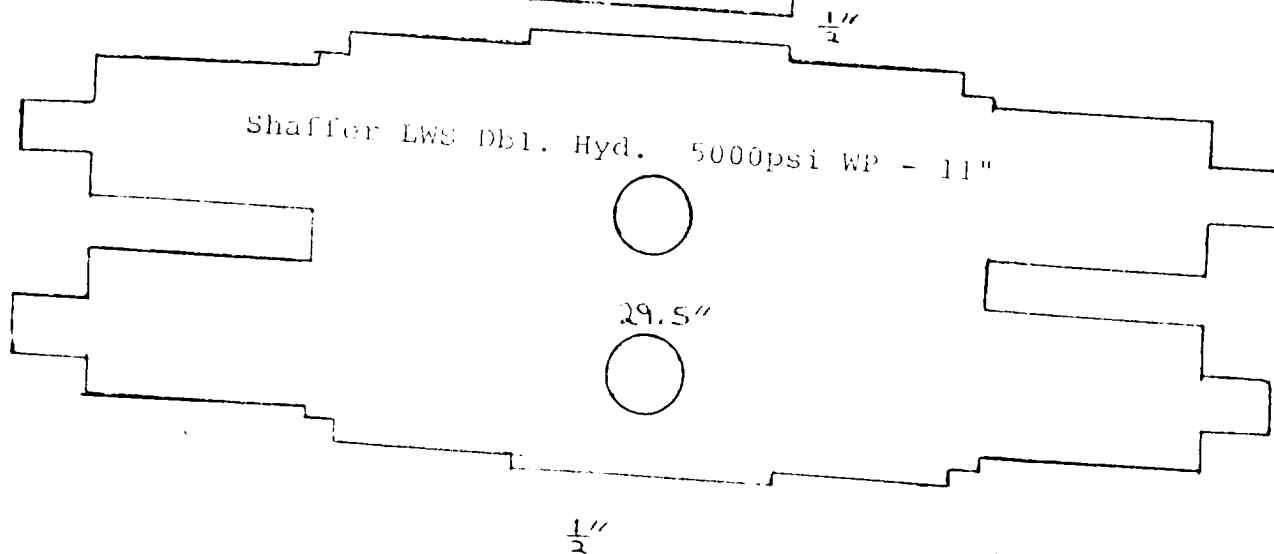
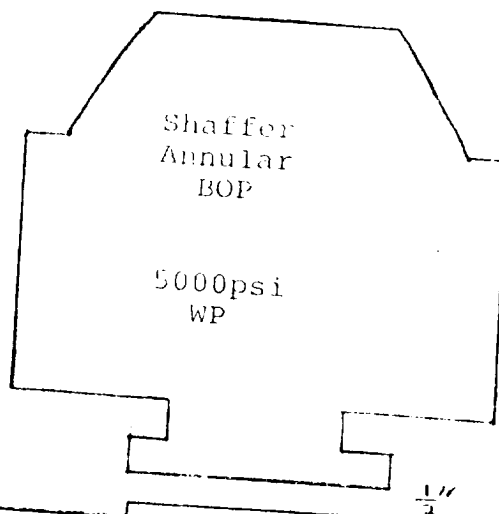
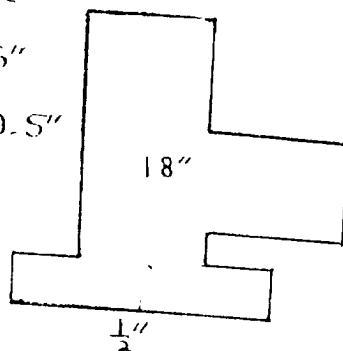


EXHIBIT "E"
READ & STEVENS, INC.
Diamond Federal, Well No. 1
BOP Specifications.