

All distances must be from the outer boundaries of the Section.

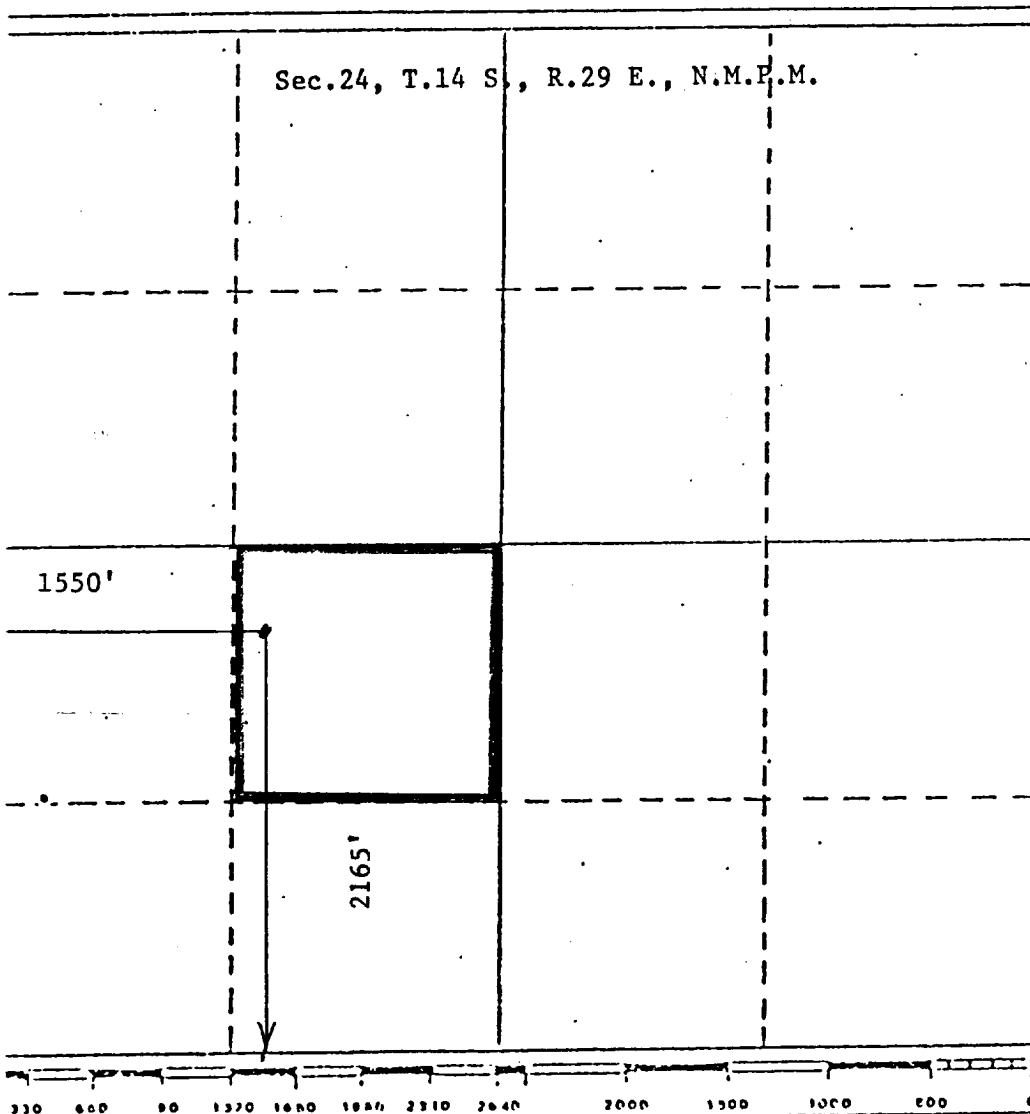
Owner McClellan Oil Corp.			Lease Marlissue Queen Unit T ₁₄ S ₁₄ E ₂₉		Well No. Tract 1 No. 2
Letter K	Section 24	Township 14 South	Range 29 East	County Chaves	
Well Location of Well: 2165 feet from the South line and 1550 feet from the West line					
Well Level Elev. 3793	Producing Formation Queen		Pool Double L Queen Assoc		Dedicated Acreage: 40 Acres

1. Outline the acreage dedicated to the subject well by colored pencil or hatchure marks on the plat below.
2. If more than one lease is dedicated to the well, outline each and identify the ownership thereof (both as to working interest and royalty).
3. If more than one lease of different ownership is dedicated to the well, have the interests of all owners been consolidated by communitization, unitization, force-pooling, etc?

☐ Yes ☐ No If answer is "yes," type of consolidation _____

If answer is "no," list the owners and tract descriptions which have actually been consolidated. (Use reverse side of this form if necessary.) _____

No allowable will be assigned to the well until all interests have been consolidated (by communitization, unitization, forced-pooling, or otherwise) or until a non-standard unit, eliminating such interests, has been approved by the Division.



CERTIFICATION

I hereby certify that the information contained herein is true and complete to the best of my knowledge and belief.

Mark McClellan

Name
Mark McClellan

Position
Geologist

Company
McClellan Oil Corporation

Date
December 16, 1983

I hereby certify that the well location shown on this plat was plotted from field notes of actual surveys made by me or under my supervision, and that the same is true and correct to the best of my knowledge and belief.

Date Surveyed
November 30, 1983

Registered Professional Engineer and/or Land Surveyor

John D. Jaques

Certificate No. 6290

