

All distances must be from the outer boundaries of the Section.

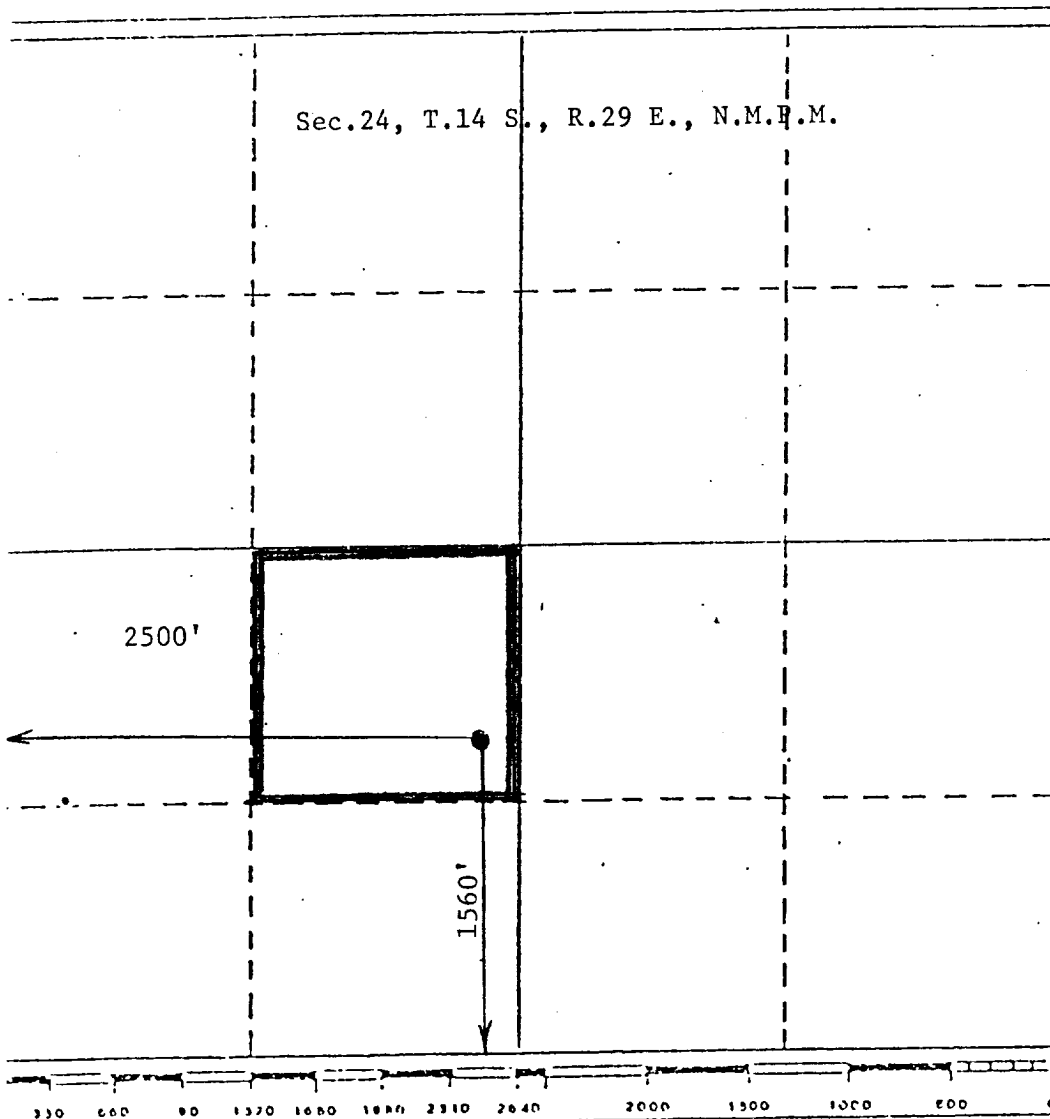
Operator McClellan Oil Corp.			Lease Marlisue Queen Unit T. 14 S. / R. 29 E.		Well No. Tract 1 No. 3
Section Letter K	Section 24	Township 14 South	Range 29 East	County Chaves	
Well Postage Location of Well: 1560 feet from the South line and 2500 feet from the West line					
Ground Level Elev. 3804	Producing Formation Queen		Pool Double L Queen Assoc	Dedicated Acreage: 40 Acres	

1. Outline the acreage dedicated to the subject well by colored pencil or hatchure marks on the plat below.
2. If more than one lease is dedicated to the well, outline each and identify the ownership thereof (both as to working interest and royalty).
3. If more than one lease of different ownership is dedicated to the well, have the interests of all owners been consolidated by communitization, unitization, force-pooling, etc?

☐ Yes ☐ No If answer is "yes," type of consolidation \_\_\_\_\_

If answer is "no," list the owners and tract descriptions which have actually been consolidated. (Use reverse side of this form if necessary.) \_\_\_\_\_

No allowable will be assigned to the well until all interests have been consolidated (by communitization, unitization, forced-pooling, or otherwise) or until a non-standard unit, eliminating such interests, has been approved by the Division.



#### CERTIFICATION

I hereby certify that the information contained herein is true and complete to the best of my knowledge and belief.

*Mark McClellan*

Name  
Mark McClellan  
Position  
Geologist  
Company  
McClellan Oil Corporation  
Date  
December 16, 1983

I hereby certify that the well location shown on this plat was plotted from field notes of actual surveys made by me or under my supervision, and that the same is true and correct to the best of my knowledge and belief.

JOHN D. JAQUES  
NEW MEXICO  
November 20, 1983  
Registered Professional Engineer  
and/or Land Surveyor  
John D. Jaques  
Certificate No. 6290