

DEC 16 1983

All distances must be from the outer boundaries of the Section.

Operator McClellan Oil Corp.		Lease Marlisue Queen		Tr. 2 O. C. D. ARTESIA, OFFICE		Well No. Tract 2 No. 8
11 Letter F	Section 24	Township 14 South	Range 29 East	County Chaves		

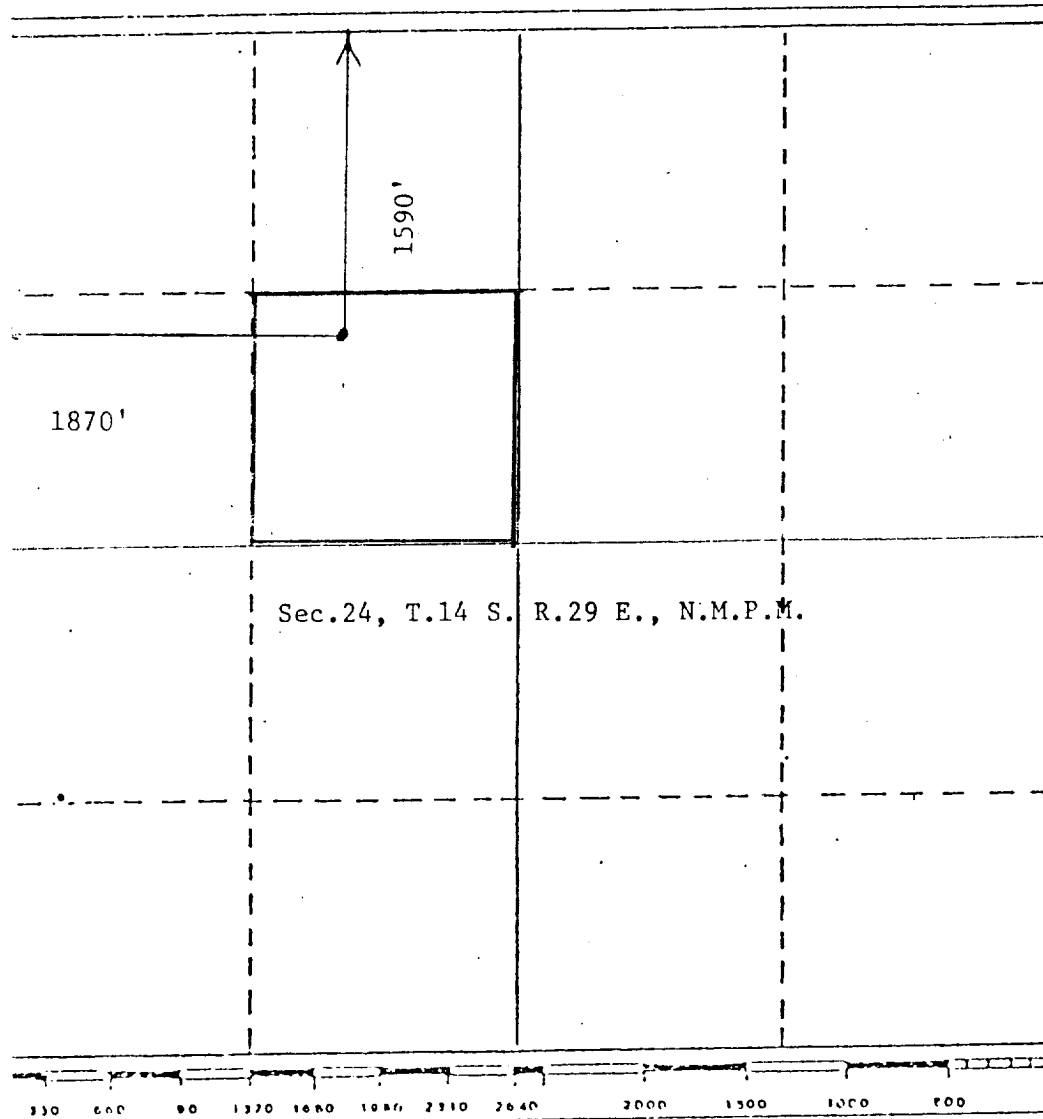
East Footage Location of Well: 1590 feet from the North line and 1870 feet from the West line		Producing Formation Queen water injection well	Pool Double "L" Queen Assoc.	Dedicated Acreage: 40 Acres
Ground Level Elev. 3796				

1. Outline the acreage dedicated to the subject well by colored pencil or hatchure marks on the plat below.
2. If more than one lease is dedicated to the well, outline each and identify the ownership thereof (both as to working interest and royalty).
3. If more than one lease of different ownership is dedicated to the well, have the interests of all owners been consolidated by communitization, unitization, force-pooling, etc?

☐ Yes ☐ No If answer is "yes," type of consolidation \_\_\_\_\_

If answer is "no," list the owners and tract descriptions which have actually been consolidated. (Use reverse side of this form if necessary.) \_\_\_\_\_

No allowable will be assigned to the well until all interests have been consolidated (by communitization, unitization, forced-pooling, or otherwise) or until a non-standard unit, eliminating such interests, has been approved by the Division



CERTIFICATION

I hereby certify that the information contained herein is true and complete to the best of my knowledge and belief.

*Mark McClellan*

Name	Mark McClellan
Position	Geologist
Company	McClellan Oil Corporation
Date	December 14, 1983

I hereby certify that the well location shown on this plat was plotted from field notes of actual surveys made by me or under my supervision, and that the same is true and correct to the best of my knowledge and belief.

Date Surveyed	November 30, 1983
Registered Professional Engineer and/or Land Surveyor	John D. Jaquess
Certificate No.	6290