

NM OIL CONS. COMMISSION
Drawer DD
Artesia, NM 88210
SUBMIT IN TRI. DATE*
(Number 99210 on reverse side)

RECEIVED BY
For Approved
Budget Bureau No. 72-R1425
000001 1984

UNITED STATES
DEPARTMENT OF THE INTERIOR
GEOLOGICAL SURVEY

APPLICATION FOR PERMIT TO DRILL, DEEPEN, OR PLUG BACK

1a. TYPE OF WORK
DRILL ☒ DEEPEN ☐ PLUG BACK ☐
b. TYPE OF WELL
OIL WELL ☐ GAS WELL ☒ OTHER ☐
SINGLE ZONE ☐ MULTIPLE ZONE ☐

2. NAME OF OPERATOR
HARPER OIL COMPANY ✓
3. ADDRESS OF OPERATOR
310 BRIERCROFT BUILDING, MIDLAND, TEXAS 79701

4. LOCATION OF WELL (Report location clearly and in accordance with any State requirements.)
At surface
330 feet from South line
At proposed prod. zone
330 feet from West line
ut. m

14. DISTANCE IN MILES AND DIRECTION FROM NEAREST TOWN OR POST OFFICE*
40 air miles S.W. of Roswell

15. DISTANCE FROM PROPOSED*
LOCATION TO NEAREST
PROPERTY OR LEASE LINE, FT.
(Also to nearest drlg. unit line, if any)
330 ft.

16. NO. OF ACRES IN LEASE
600

17. NO. OF ACRES ASSIGNED
TO THIS WELL
160

18. DISTANCE FROM PROPOSED LOCATION*
TO NEAREST WELL, DRILLING, COMPLETED,
OR APPLIED FOR, ON THIS LEASE, FT.
P & A-1 mile

19. PROPOSED DEPTH
4,000 feet

20. ROTARY OR CABLE TOOLS
ROTARY

21. ELEVATIONS (Show whether DF, RT, GR, etc.)

G.L. 4,224.4 feet

22. APPROX. DATE WORK WILL START*

9-28-84

PROPOSED CASING AND CEMENTING PROGRAM

SIZE OF HOLE	SIZE OF CASING	WEIGHT PER FOOT	SETTING DEPTH	QUANTITY OF CEMENT
11	8-5/8	24	1050 feet	315 Sks. Circulate
7-7/8	5-1/2	15.5	4000 feet	650 Sks.



Forced IDI
APJ/awh
10-5-84

IN ABOVE SPACE DESCRIBE PROPOSED PROGRAM: If proposal is to deepen or plug back, give data on present productive zone and proposed new productive zone. If proposal is to drill or deepen directionally, give pertinent data on subsurface locations and measured and true vertical depths. Give blowout preventer program, if any.

24.

SIGNED Don Neudham TITLE Production Supt. DATE 9-25-84

(This space for Federal or State office use)

PERMIT NO. _____ APPROVAL DATE _____

APPROVED BY S/Phil Kirk TITLE Area Manager

CONDITIONS OF APPROVAL, IF ANY:

DATE 9-27-84

MEXICO OIL CONSERVATION COMMISS. ✓
WELL LOCATION AND ACREAGE DEDICATION PLAT

Form C-102
Supersedes C-128
Effective 1-1-65

All distances must be from the outer boundaries of the Section

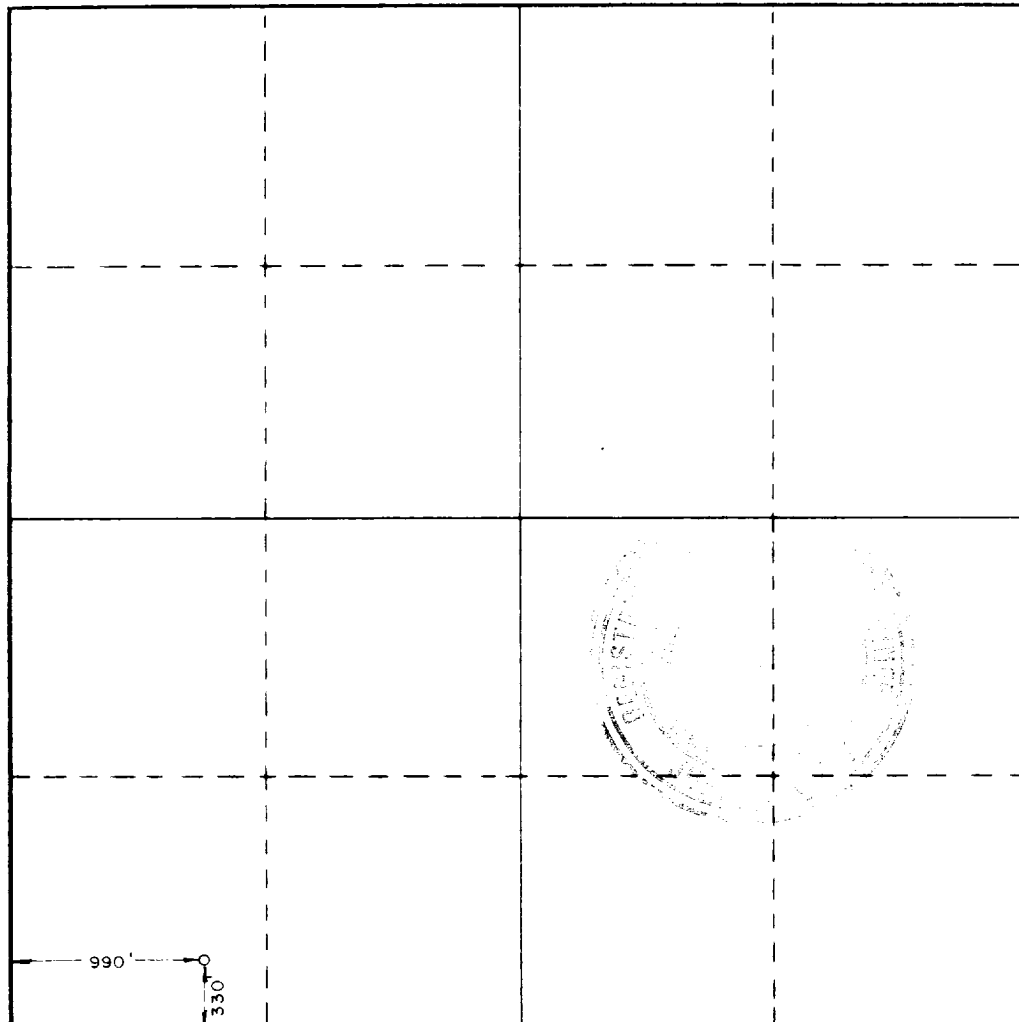
Operator HARPER OIL CO.		Lease LUCKY 13		Well No. 1
Grid Letter M	Section 19	Township 15S	Range 22E	County CHAVES
Actual Footage Location of Well: 330 feet from the SOUTH line and 990 feet from the WEST line				
Ground Level Elev. 4224.4	Producing Formation ABO	Pool WILDCAT	Dedicated Acreage: 160 Acres	

1. Outline the acreage dedicated to the subject well by colored pencil or hachure marks on the plat below.
2. If more than one lease is dedicated to the well, outline each and identify the ownership thereof (both as to working interest and royalty).
3. If more than one lease of different ownership is dedicated to the well, have the interests of all owners been consolidated by communitization, unitization, force-pooling, etc?

☐ Yes ☐ No If answer is "yes," type of consolidation _____

If answer is "no," list the owners and tract descriptions which have actually been consolidated. (Use reverse side of this form if necessary.) _____

No allowable will be assigned to the well until all interests have been consolidated (by communitization, unitization, forced-pooling, or otherwise) or until a non-standard unit, eliminating such interests, has been approved by the Commission.



CERTIFICATION

I hereby certify that the information contained herein is true and complete to the best of my knowledge and belief.

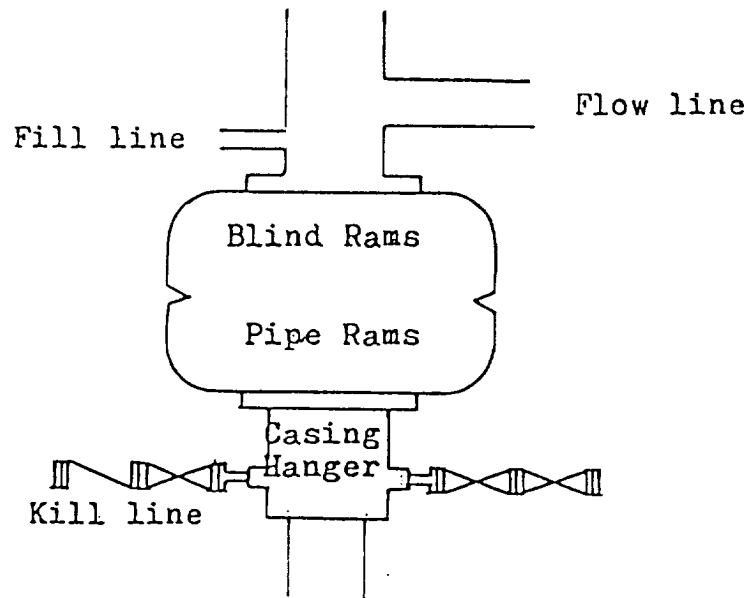
Name Don Medham
Position Prod. Supt
Company Harper Oil Co
Date 9-24-84

I hereby certify that the well location shown on this plat was plotted from field notes of actual surveys made by me or under my supervision, and that the same is true and correct to the best of my knowledge and belief.

Date Surveyed
9/20/84

Registered Professional Engineer
and/or Land Surveyor

John W. West
Certificate No. JOHN W. WEST, 676
RONALD J. EIDSON, 3239



Blowout Preventer
3000 psi working pressure

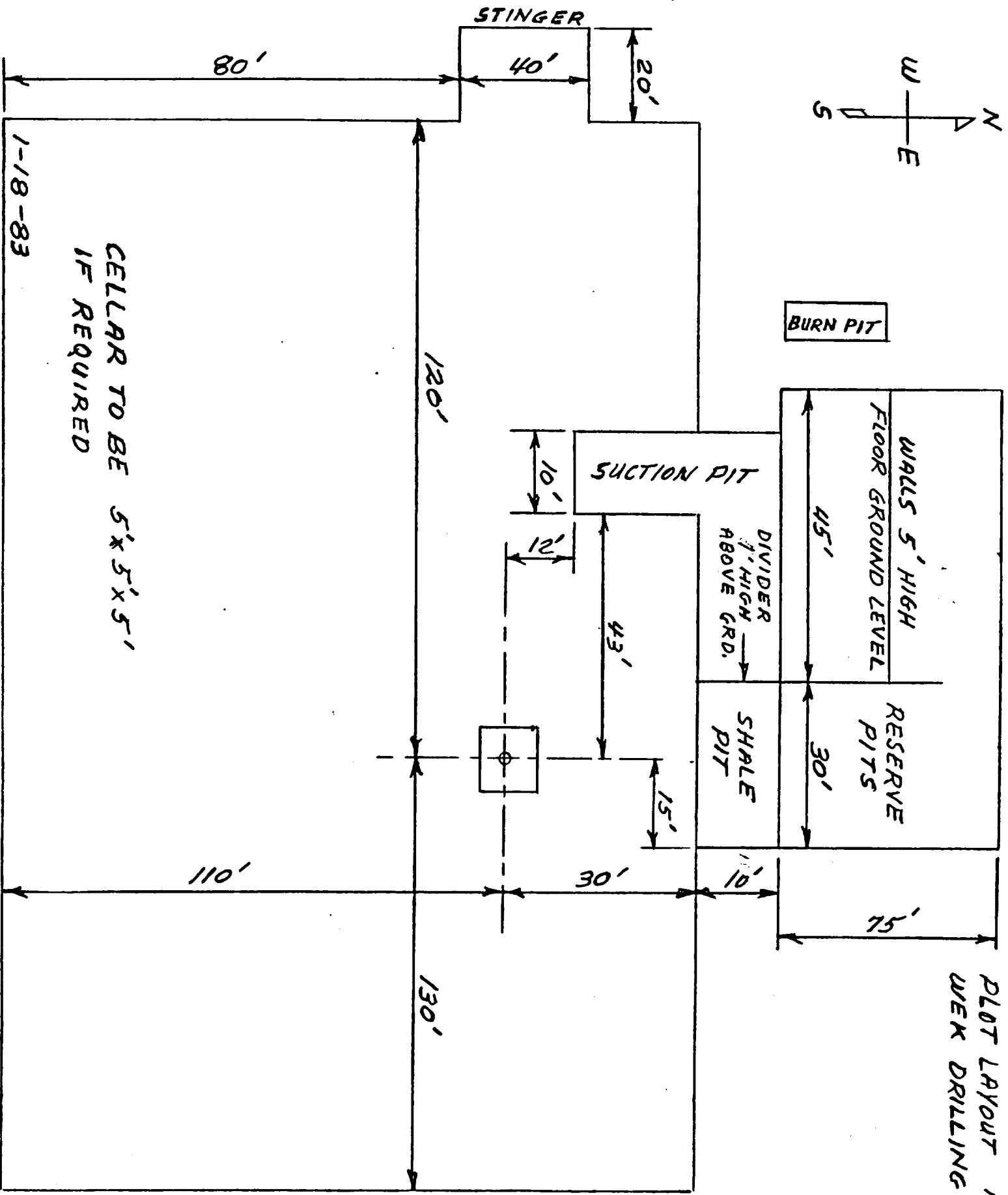
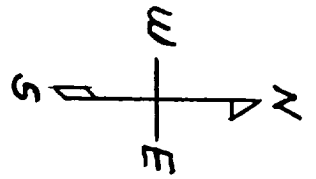
EXHIBIT "D"

ADVANCE PROOF
SUBJECT TO CORRECTION

HOPE 2NE QUADRANGLE
NEW MEXICO

7.5 MINUTE SERIES (TOPOGRAPHIC)





1-18-83

CELLAR TO BE 5'x5'x5'
IF REQUIRED

PLOT LAYOUT RIG 3
WELK DRILLING