

Form 9-331C
(May 1963)

Drawn DD

Artesia, NM 88210

UNITED STATES

DEPARTMENT OF THE INTERIOR

GEOLOGICAL SURVEY

APR 10 1985

APPLICATION FOR PERMIT TO DRILL, DEEPEN, OR PLUG BACK

18. ARTESIA OFFICE

DRILL ☒DEEPEN ☐PLUG BACK ☐

b. TYPE OF WELL

OIL WELL ☒GAS WELL ☐OTHER ☐

2. NAME OF OPERATOR

YATES PETROLEUM CORPORATION

3. ADDRESS OF OPERATOR

207 SOUTH FOURTH STREET, ARTESIA, NEW MEXICO 88210

4. LOCATION OF WELL (Report location clearly and in accordance with any State requirements.)*

At surface

745' FNL and 510' FWL

At proposed prod. zone

same

14. DISTANCE IN MILES AND DIRECTION FROM NEAREST TOWN OR POST OFFICE*

Approximately 10 miles west of Dunken, New Mexico

15. DISTANCE FROM PROPOSED*

LOCATION TO NEAREST

PROPERTY OR LEASE LINE, FT.

(Also to nearest drlg. unit line, if any)

18. DISTANCE FROM PROPOSED LOCATION*

TO NEAREST WELL, DRILLING, COMPLETED,

OR APPLIED FOR, ON THIS LEASE, FT.

16. NO. OF ACRES IN LEASE

2534.75

19. PROPOSED DEPTH

appro. 4700'

17. NO. OF ACRES ASSIGNED TO THIS WELL

40

20. ROTARY OR CABLE TOOLS

Rotary

21. ELEVATIONS (Show whether DF, RT, GR, etc.)

6142' GL

22. APPROX. DATE WORK WILL START*

ASAP

23.

PROPOSED CASING AND CEMENTING PROGRAM

SIZE OF HOLE	SIZE OF CASING	WEIGHT PER FOOT	SETTING DEPTH	QUANTITY OF CEMENT
17 1/2"	13 3/8"	48# J-55	Appr. 250'	250 sx circulate
12 1/4"	9 5/8"	32.5# J-55	Appr. 1500'	900 sx circulate
7 7/8"	4 1/2" or	17#-15.5	TD	1250 sx
	5 1/2"	11.6-10.5#		

We propose to drill to Granite and test the intermediate formations. Approximately 250' of surface casing will be set to shut off gravel and cavings and intermediate casing will be set at approximately 1500'. If commercial, will run 4 1/2" or 5 1/2" casing with 600' cement cover, will perforate and stimulate as needed for production.

MUD PROGRAM: FW gel/LCM to 1500', FW/gel/starch to 4300', starch/driscapak/KCL to 6700', flosal/driscapak/KCL to TD.

BOP PROGRAM: BOP's and hydril will be installed on the 9 5/8" csg. and tested daily.

IN ABOVE SPACE DESCRIBE PROPOSED PROGRAM: If proposal is to deepen or plug back, give data on present productive zone and proposed new productive zone. If proposal is to drill or deepen directionally, give pertinent data on subsurface locations and measured and true vertical depths. Give blowout preventer program, if any.

24.

SIGNED

Glenn Rodriguez

TITLE

Regulatory Agent

DATE

1/24/85

(This space for Federal or State office use)

PERMIT NO.

APPROVAL DATE

APPROVED BY

TITLE

DATE

CONDITIONS OF APPROVAL, IF ANY:

APPROVAL SUBJECT TO
GENERAL REQUIREMENTS AND
SPECIAL STIPULATIONS
ATTACHED

Parted ID 1
APR 14
4-19-85

Form approved.
Budget Bureau No. 42-R1425.

30-005-62259

5. LEASE DESIGNATION AND SERIAL NO.

NM-24845

6. IF INDIAN, ALLOTTEE OR TRIBE NAME

7. UNIT AGREEMENT NAME

One Tree Unit

8. FARM OR LEASE NAME

9. WELL NO.

1

10. FIELD AND POOL, OR WILDCAT

Wildcat

11. SEC., T., R., M., OR BLK.
AND SURVEY OR AREA

Sec. 18-T18S-R16E

12. COUNTY OR PARISH

Chaves

13. STATE

NM

MEXICO OIL CONSERVATION COMMISS.
WELL LOCATION AND ACREAGE DEDICATION PLAT

Form C-102
Supersedes C-128
Effective 1-1-65

All distances must be from the outer boundaries of the Section.

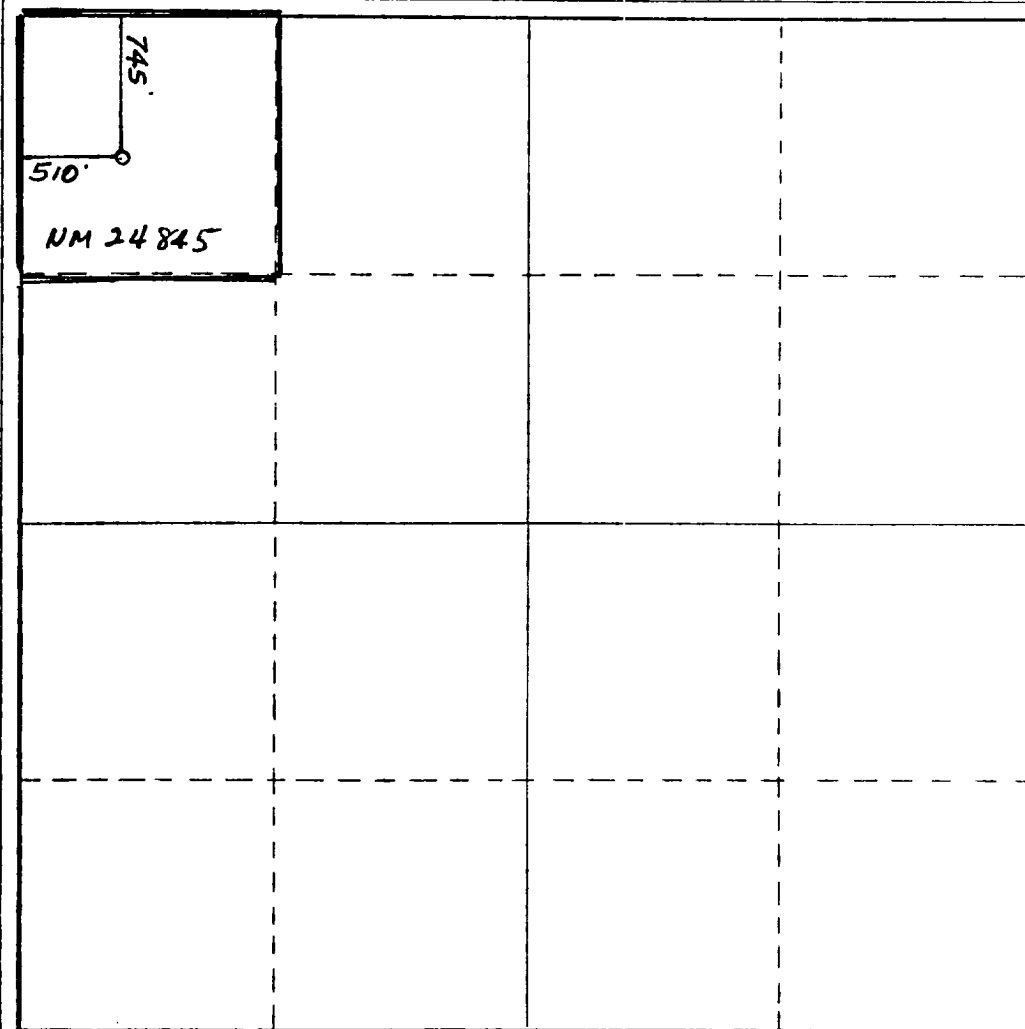
Operator YATES PETROLEUM CORPORATION			Lease One Tree Unit		Well No. 1
Unit Letter D	Section 18	Township 18 South	Range 16 East	County Chaves	
Actual Footage Location of Well: 745 feet from the North line and 510 feet from the West line					
Ground Level Elev. 6142.	Producing Formation PRE - CAMBRIAN		Pool Wildcat	Dedicated Acreage: 40 Acres	

1. Outline the acreage dedicated to the subject well by colored pencil or hachure marks on the plat below.
2. If more than one lease is dedicated to the well, outline each and identify the ownership thereof (both as to working interest and royalty).
3. If more than one lease of different ownership is dedicated to the well, have the interests of all owners been consolidated by communitization, unitization, force-pooling, etc?

☐ Yes ☐ No If answer is "yes," type of consolidation _____

If answer is "no," list the owners and tract descriptions which have actually been consolidated. (Use reverse side of this form if necessary.) _____

No allowable will be assigned to the well until all interests have been consolidated (by communitization, unitization, forced-pooling, or otherwise) or until a non-standard unit, eliminating such interests, has been approved by the Commission.



CERTIFICATION

I hereby certify that the information contained herein is true and complete to the best of my knowledge and belief.

Name
Gliserio Rodriguez

Position
Regulatory Agent

Company
Yates Petroleum Corporation

Date
1/24/85

I hereby certify that the well location shown on this plat was plotted from field notes of actual surveys made by me or under my supervision, and that the same is true and correct to the best of my knowledge and belief.

Date Surveyed

January 23, 1985
Registered Professional Engineer
and/or Land Surveyor

Dan R. Reddy
Certificate No.

NM PE&LS NO. 5412

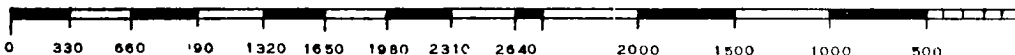
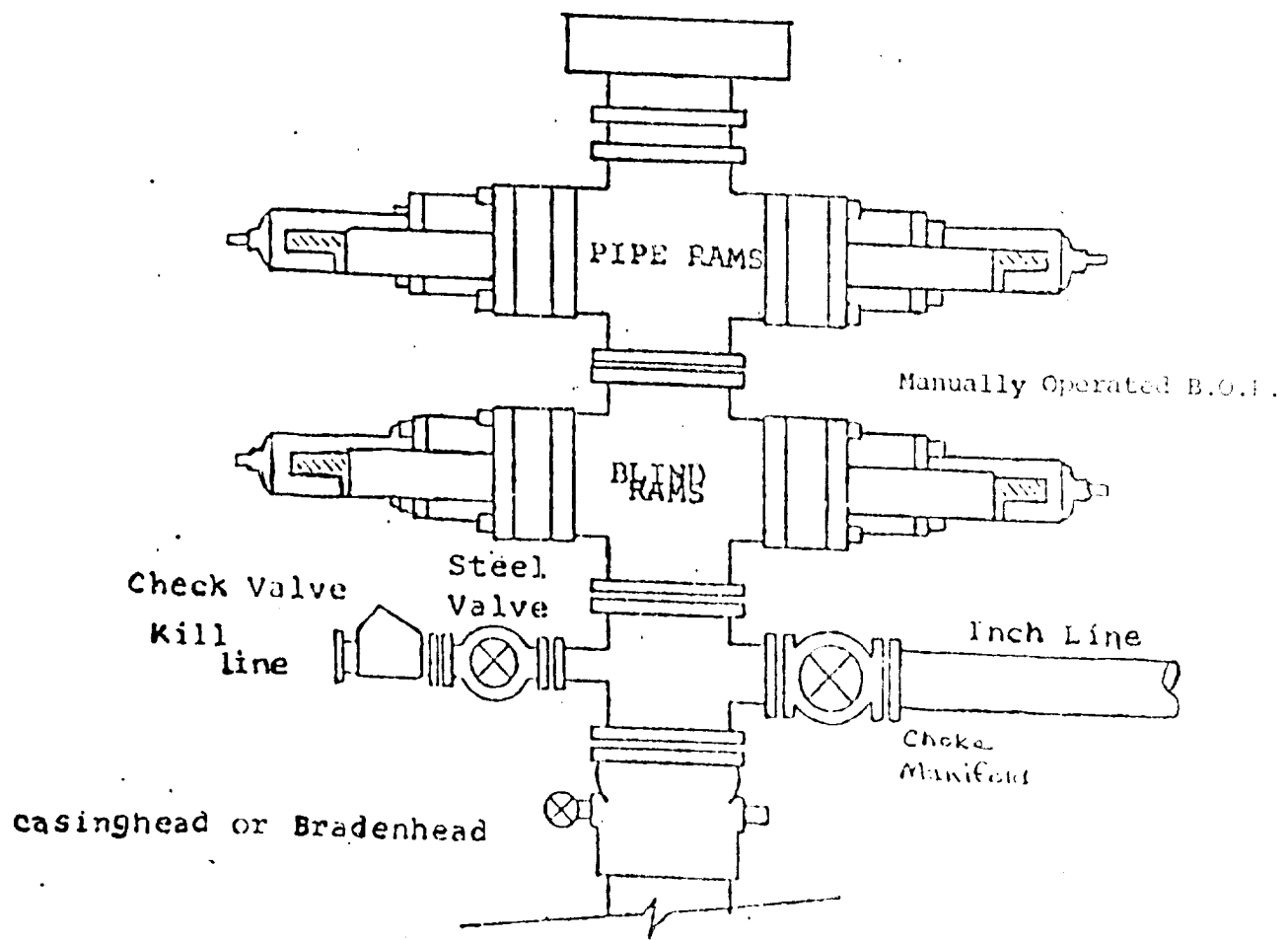


EXHIBIT B
BDP DIAGRAM
RATED 3000[#]



YATES PETROLEUM CORPORATION
One Tree Unit #1
745' FNL & 510' FWL
Section 13-T18S-R16E
Chaves County, NM

In conjunction with Form 9-331C, Application for Permit to Drill subject well, Yates Petroleum Company submits the following ten items of pertinent information in accordance with BLM requirements.

1. The geologic surface formation is San Andres.
2. The estimated tops of geologic markers are as follows:

Glorieta	500'	Montoya	3400'
Yeso	550'	El Paso	3940'
Penn	2250'	Pre Cambrian	4400'
Mississippian	2950'	TD	4700'
Fussahman	3265'		

3. The estimated depths at which anticipated water, oil or gas formations are expected to be encountered:

Water: approximately 250'

Oil or Gas: 2900'

4. Proposed Casing Program: See Form 9-331C.
5. Pressure Control Equipment: See Form 9-331C.
6. Mud Program: See Form 9-331C.
7. Auxiliary Equipment: Kelly Cock; pit level indicators and flow sensor equipment; sub with full-opening valve on floor, drill pipe connection.
8. Testing, Logging and Coring Program:
 - Samples: 5' lithologic, canned samples at 50' intervals from 1500' to TD.
 - DST's: As warranted
 - Logging: CNL-Litho Density; DLL-RxO; Sonic-GR, surface to TD: EPT
Bond log will be run before intermediate casing.
 - Mudlogging: One man unit surface to TD.
9. No abnormal pressures or temperatures are anticipated.
10. Anticipated starting date: As soon as possible after approval.

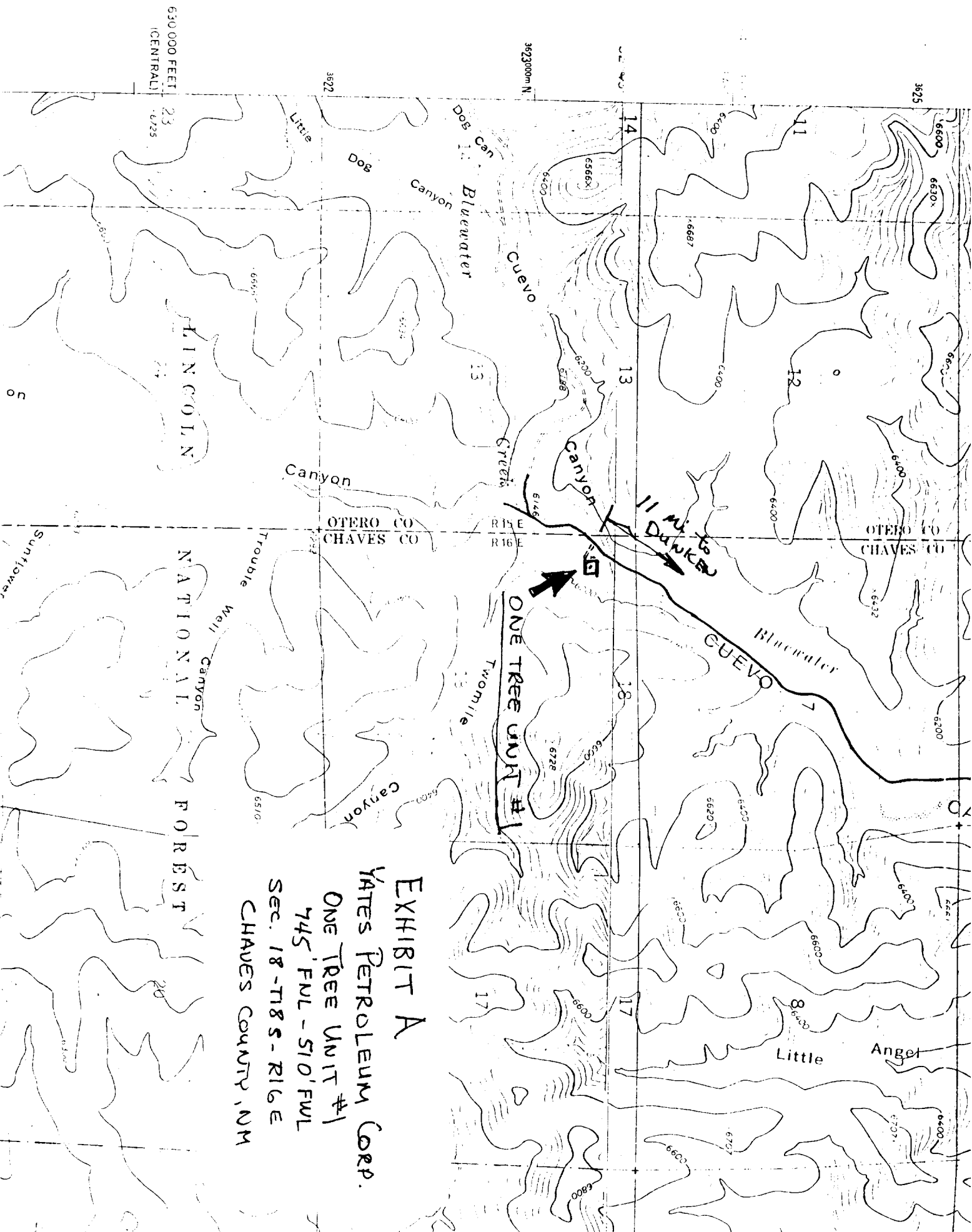


EXHIBIT A

YATES PETROLEUM CORP.

ONE TREE UNIT #1

745' FWL - 510' FWL

Sec. 18-T18S-R16E

CHAVES COUNTY, NM

YATES PETROLEUM CORP.

Exhibit C

Reserve Pit
bottom to be at
ground level to
1 ft.

NOTE:

Inside walls must be as
high and wide as outer
walls of pit.

