

STATE OF NEW MEXICO
ENERGY AND MINERALS DEPARTMENT

OIL CONSERVATION DIVISION

P. O. BOX 1088

SANTA FE, NEW MEXICO 87501

RECEIVED BY

MAY 09 1985

O. C. D.

ARTESIA, OFFICE

Form C-101

Rev. 1-80

30-205-63268

5A. Indicate Type of Lease

STATE ☒

FEE ☐

5. State Oil & Gas Lease No.

LG-3413

7. Unit Agreement Name

Little Cuevo Unit

8. Farm or Lease Name

Little Cuevo Unit

9. Well No.

2

10. Field and Pool, or Wildcat

Wildcat-Precambrian

12. County

Chaves

19. Proposed Depth

approx. 5950'

19A. Formation

Abo

20. Rotary or C.T.

Rotary

21A. Kind & Status Plug, Bond

5306' GR

Blanket

21B. Drilling Contractor

Young Drilling Rig #4.

22. Approx. Date Work will start

ASAP

PROPOSED CASING AND CEMENT PROGRAM

SIZE OF HOLE	SIZE OF CASING	WEIGHT PER FOOT	SETTING DEPTH	SACKS OF CEMENT	EST. TOP
17-1/2"	13-3/8"	48# H-40	Approx. 400'	300 sacks	circulate
12-1/4"	9-5/8"	36# K-55	*1250 1000'	500 sacks	circulate
7-7/8"	5-1/2"	15.5# K-55	TD	1300 sacks	

We intend to drill and test the Abo and intermediate formations. Will set approximately 400' of 13-3/8" surface casing and cement circulated to shut off cavings. 9-5/8" intermediate casing will be run with enough cement to tie back into the surface casing. If commercial, production casing (5-1/2") will be run and cemented with adequate cover.

MUD PROGRAM: FW gel and LCM to 1000'; KCL added to 2500'; SW gel/KCL to TD.

BOP PROGRAM: BOP's will be installed at the offset and tested daily.

GAS NOT DEDICATED

APPROVAL VALID FOR 180 DAYS

PERMIT EXPIRES 11-14-85

UNLESS DRILLING UNDERWAY

BOVE SPACE DESCRIBE PROPOSED PROGRAM: IF PROPOSAL IS TO DEEPEN OR PLUG BACK, GIVE DATA ON PRESENT PRODUCTIVE ZONE AND PROPOSED NEW PRODUCTIVE ZONE. GIVE WELLSHUT PREVENTER PROGRAM, IF ANY.

I hereby certify that the information above is true and complete to the best of my knowledge and belief.

By Cy Cowan Title Regulatory Agent

Date May 9, 1985

(This space for State Use)

Original Signed By

Mike Williams

Oil & Gas Inspector

DATE MAY 14 1985

APPROVED BY

CONDITIONS OF APPROVAL, IF ANY:

* As Noted Above

Notify N.M.O.C.C. in sufficient

time to witness cementing

the 9 5/8 casing

NEW MEXICO OIL CONSERVATION COMMISSION
WELL LOCATION AND ACREAGE DEDICATION PLAT

Form C-102
Supersedes C-128
Effective 1-1-65

All distances must be from the outer boundaries of the Section.

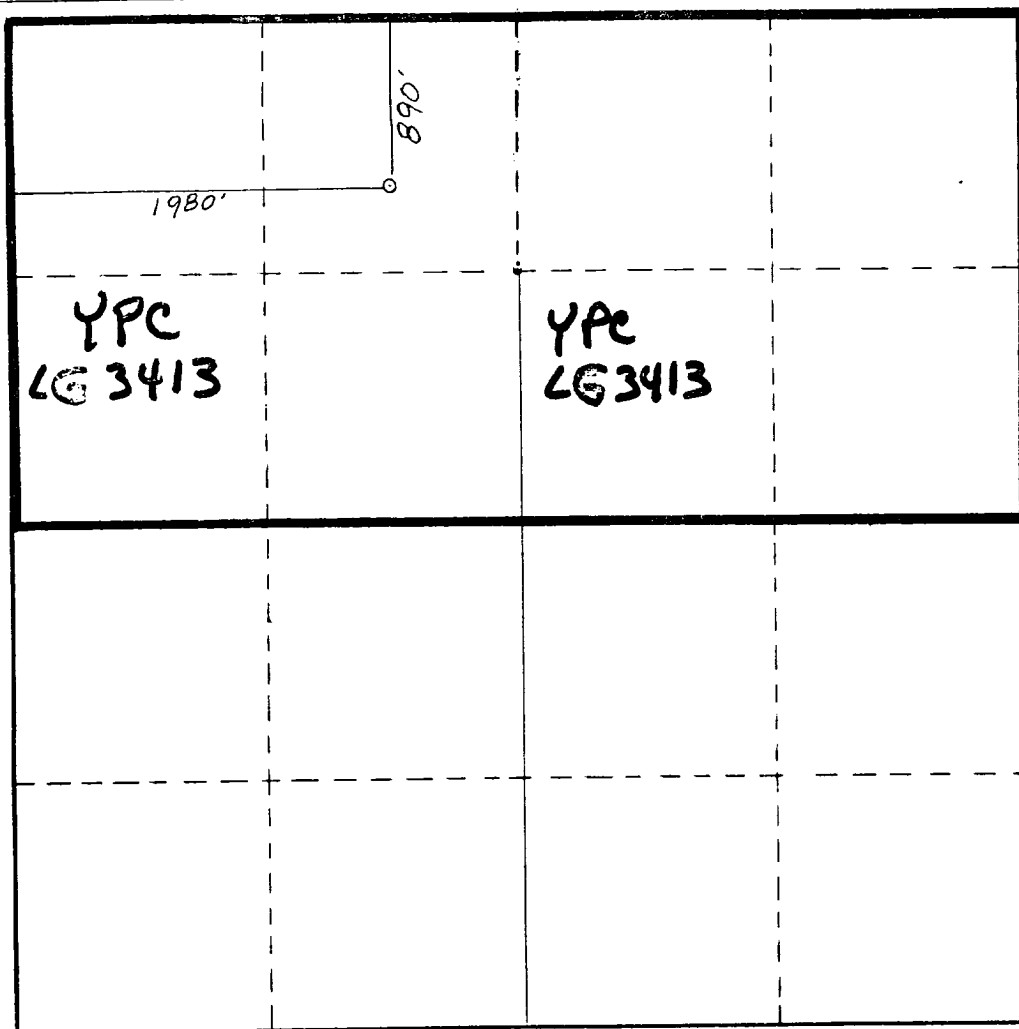
Operator YATES PETROLEUM CORPORATION		Lease Little Cuevo Unit		Well No. 2
Unit Letter C	Section 33	Township 17 South	Range 18 East	County Chaves
Actual Footage Location of Well: 890 feet from the North line and 1980 feet from the West line				
Ground Level Elev. 5306.	Producing Formation PRECAMBRIAN	Pool Wildcat	Dedicated Acreage: 320 Acres	

1. Outline the acreage dedicated to the subject well by colored pencil or hachure marks on the plat below.
2. If more than one lease is dedicated to the well, outline each and identify the ownership thereof (both as to working interest and royalty).
3. If more than one lease of different ownership is dedicated to the well, have the interests of all owners been consolidated by communitization, unitization, force-pooling, etc?

☒ Yes ☐ No If answer is "yes," type of consolidation **Unitization**

If answer is "no," list the owners and tract descriptions which have actually been consolidated. (Use reverse side of this form if necessary.) _____

No allowable will be assigned to the well until all interests have been consolidated (by communitization, unitization, forced-pooling, or otherwise) or until a non-standard unit, eliminating such interests, has been approved by the Commission.



CERTIFICATION

I hereby certify that the information contained herein is true and complete to the best of my knowledge and belief.

Name

Cy Cowan

Position

Regulatory Agent

Company

Yates Petroleum Corporation

Date

May 9, 1985

DAN R. REDDY
NEW MEXICO
REGISTERED PROFESSIONAL ENGINEER
I hereby certify that the well location shown on this plat was plotted from field notes of actual surveys made by me or under my supervision, and that the same are true and correct to the best of my knowledge and belief.

Date Surveyed

May 4, 1985

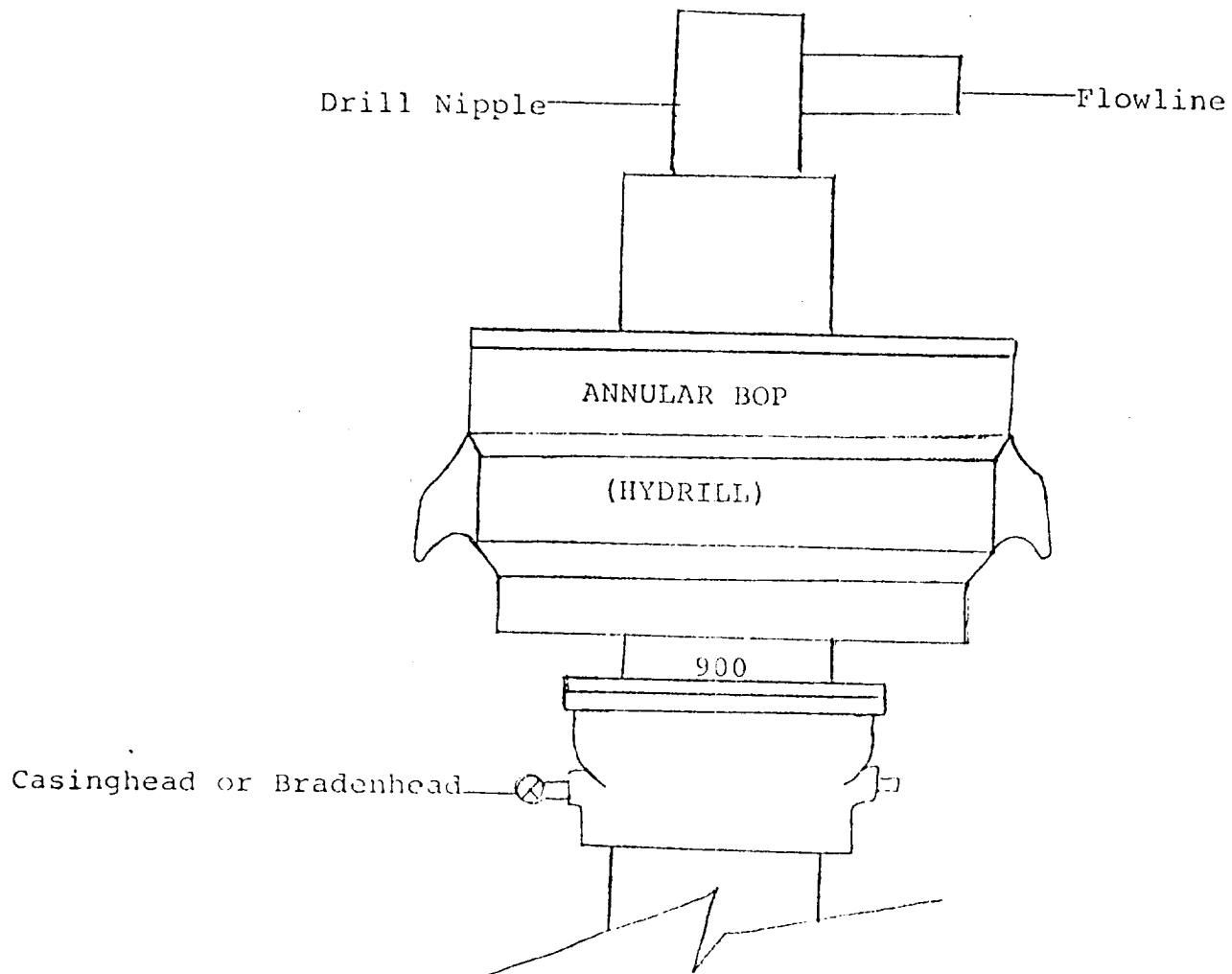
Registered Professional Engineer
and/or Land Surveyor

Certificate No.

NM PE&LS NO. 5412

0 330 660 990 1320 1650 1980 2310 2640 2000 1500 1000 500 0

Exhibit B



THE FOLLOWING CONSTITUTE MINIMUM BLOWOUT PREVENTER REQUIREMENTS

1. All preventers to be hydraulically operated with secondary manual controls installed prior to drilling out from under casing.
2. All connections from operating manifolds to preventers to be all steel. Hole or tube a minimum of one inch in diameter.
3. The available closing pressure shall be at least 15% in excess of that required with sufficient volume to operate the BOP's.
4. All connections to and from preventer to have a pressure rating equivalent to that of the BOP's.
5. Hole must be kept filled on trips below intermediate casing.