

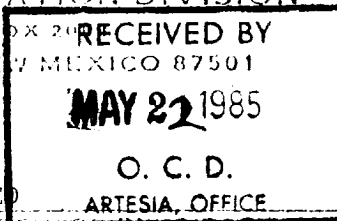
STATE OF NEW MEXICO  
OIL AND MINERALS DEPARTMENT

OIL CONSERVATION DIVISION

Form C-101  
Revised 10-1-78

NO. COPIES RECEIVED	
DISTRIBUTION	
SANTA FE	<input checked="" type="checkbox"/>
FILE	<input checked="" type="checkbox"/>
U.S.G.S.	<input checked="" type="checkbox"/>
LAND OFFICE	<input checked="" type="checkbox"/>
OPERATOR	<input checked="" type="checkbox"/>

P. O. BOX 200  
SANTA FE, NEW MEXICO 87501



AMENDED

5A. Indicate Type of Lease  
STATE ☒ REC ☐  
5. State Oil & Gas Lease No.  
LG-3413

APPLICATION FOR PERMIT TO DRILL, DEEPEN, OR PLUG BACK

Type of Work

DRILL ☒

DEEPEN ☐

PLUG BACK ☐

Type of Well

CIL ☐

CAS ☒

OTHER

SINGLE ☐

MULTIPLE ☐

Name of Operator

Yates Petroleum Corporation

Address of Operator

207 South Fourth Street - Artesia, NM 88210

Location of Well

UNIT LETTER C

LOCATED 830

FEET FROM THE North

LINE

2260

FEET FROM THE West

LINE OF SEC. 33

TWP. 17S

RGE. 18E

SEPM

7. Unit Agreement Name

Little Cuevo Unit

8. Form or Lease Name

Little Cuevo Unit

9. Well No.

2

10. Field and Pool, or Wildcat

Wildcat - Precambrian

12. County

Chaves

18. Proposed Depth

approx. 5950'

19. Formation

Abo

20. Rotary or C.T.

Rotary

11. Kind & Status From Bond

5307' GR

Blanket

21. Drilling Contractor

Young Drilling Rig #4

22. Approx. Date Work will start

ASAP

PROPOSED CASING AND CEMENT PROGRAM

SIZE OF HOLE	SIZE OF CASING	WEIGHT PER FOOT	SETTING DEPTH	SACKS OF CEMENT	EST. TOP
17-1/2"	13-3/8"	48# H-40	Approx. 400'	300 sacks	Circulate
12-1/4"	9-5/8"	36# K-55	" 1250'	500 sacks	Circulate
7-7/8"	5-1/2"	15.5# K-55	TD	1300 sacks	

We intend to drill and test the Abo and intermediate formations. Will set approximately 400' of 13-3/8" surface casing with cement circulated to shut off gravel and cavings. 9-5/8" intermediate casing will be run with enough cement to tie back into the surface casing. If commercial, production casing (5-1/2") will be run and cemented with adequate cover.

MUD PROGRAM: FW gel and LCM to 1000'; KCL added to 2500'; SW gel/KCL to TD.

BOP PROGRAM: BOP's will be installed at the offset and tested daily.

GAS NOT DEDICATED

APPROVAL VALID FOR 180 DAYS  
PERMIT EXPIRES 11-23-85  
UNLESS DRILLING UNDERWAY

BOVE SPACE DESCRIBE PROPOSED PROGRAM: IF PROPOSAL IS TO DEEPEN OR PLUG BACK, GIVE DATA ON PRESENT PRODUCTIVE ZONE AND PROPOSED NEW PRODUCTIVE ZONE. GIVE BLOWOUT PREVENTER PROGRAM, IF ANY.

I hereby certify that the information above is true and complete to the best of my knowledge and belief.

*Cy Cowan* Title Regulatory Agent Date May 21, 1985  
(This space for State Use)

APPROVED BY ORIGINAL SIGNED BY LARRY BROOKS TITLE GEOLOGIST - NMOC DATE MAY 23 1985  
POSITION OF APPROVAL Notify N.M.O.C.C. in sufficient time to witness  
9 5/8" Post ID-1 5-24-85 and hoo.

NEW MEXICO OIL CONSERVATION COMMISSION  
WELL LOCATION AND ACREAGE DEDICATION PLAT

Form C-102  
Supersedes C-128  
Effective 1-1-65

All distances must be from the outer boundaries of the Section.

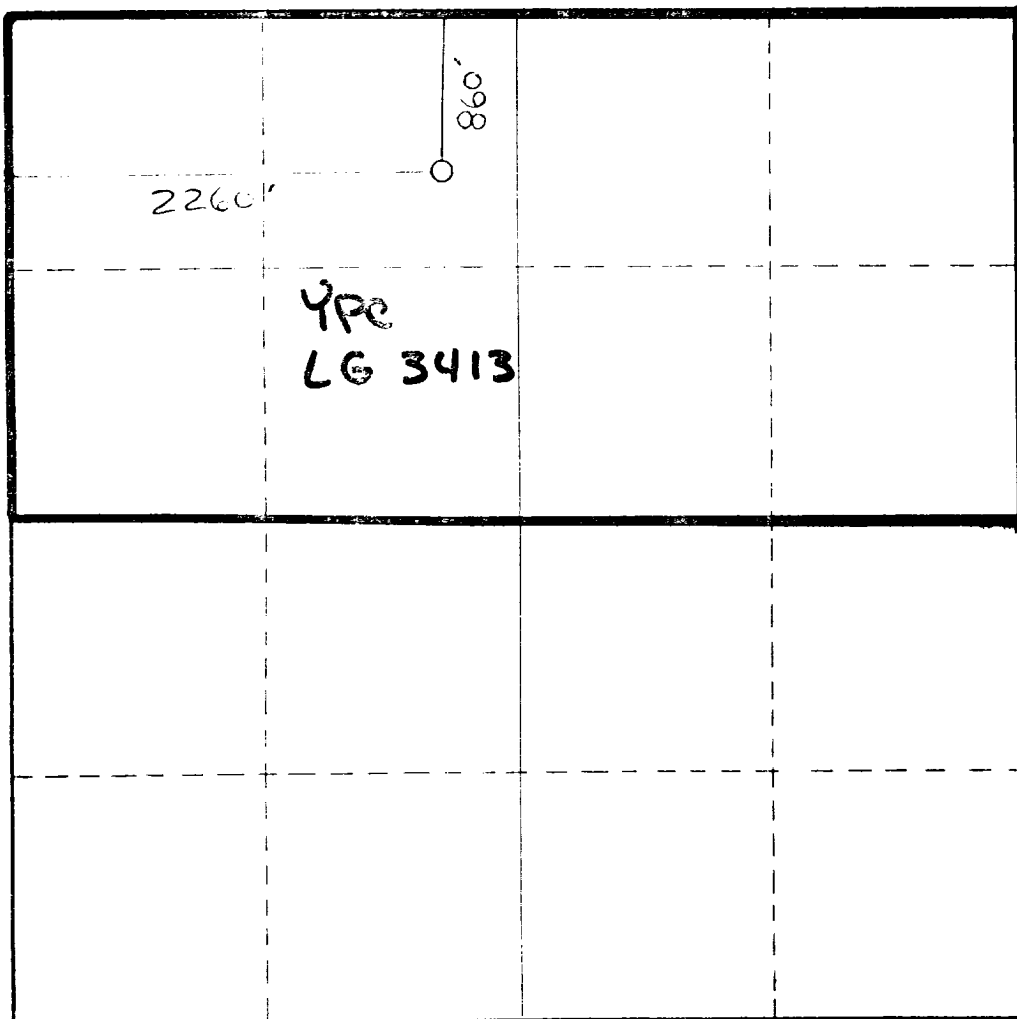
Operator Yates Petroleum Corporation			Lease Little Cuevo Unit		Well No. 2
Unit Letter C	Section 33	Township 17S	Range 18E	County Chaves	
Actual Footage Location of Well: 830 feet from the North line and 2260 feet from the West line					
Ground Level Elev. 5307'	Producing Formation Precambrian		Pool Wild Cat		Dedicated Acreage: 320 Acres

1. Outline the acreage dedicated to the subject well by colored pencil or hachure marks on the plat below.
2. If more than one lease is dedicated to the well, outline each and identify the ownership thereof (both as to working interest and royalty).
3. If more than one lease of different ownership is dedicated to the well, have the interests of all owners been consolidated by communitization, unitization, force-pooling, etc?

☒ Yes ☐ No If answer is "yes," type of consolidation Unitization

If answer is "no," list the owners and tract descriptions which have actually been consolidated. (Use reverse side of this form if necessary.)

No allowable will be assigned to the well until all interests have been consolidated (by communitization, unitization, forced-pooling, or otherwise) or until a non-standard unit, eliminating such interests, has been approved by the Commission.



CERTIFICATION

I hereby certify that the information contained herein is true and complete to the best of my knowledge and belief.

Cy Cowan

Name

Cy Cowan

Position

Regulatory Agent

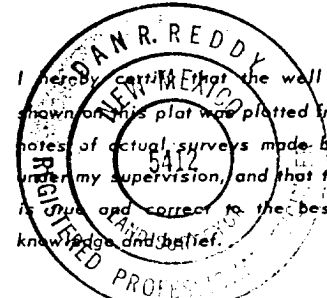
Company

Yates Petroleum Corporation

Date

May 21, 1985

I hereby certify that the well location shown on this plat was plotted from field notes of actual surveys made by me or under my supervision, and that the same is true and correct to the best of my knowledge and belief.



May 15, 1985

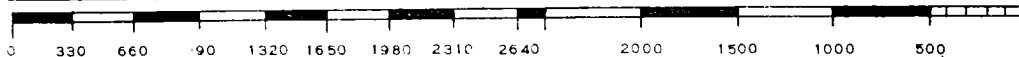
Date Surveyed

Registered Professional Engineer and/or Land Surveyor

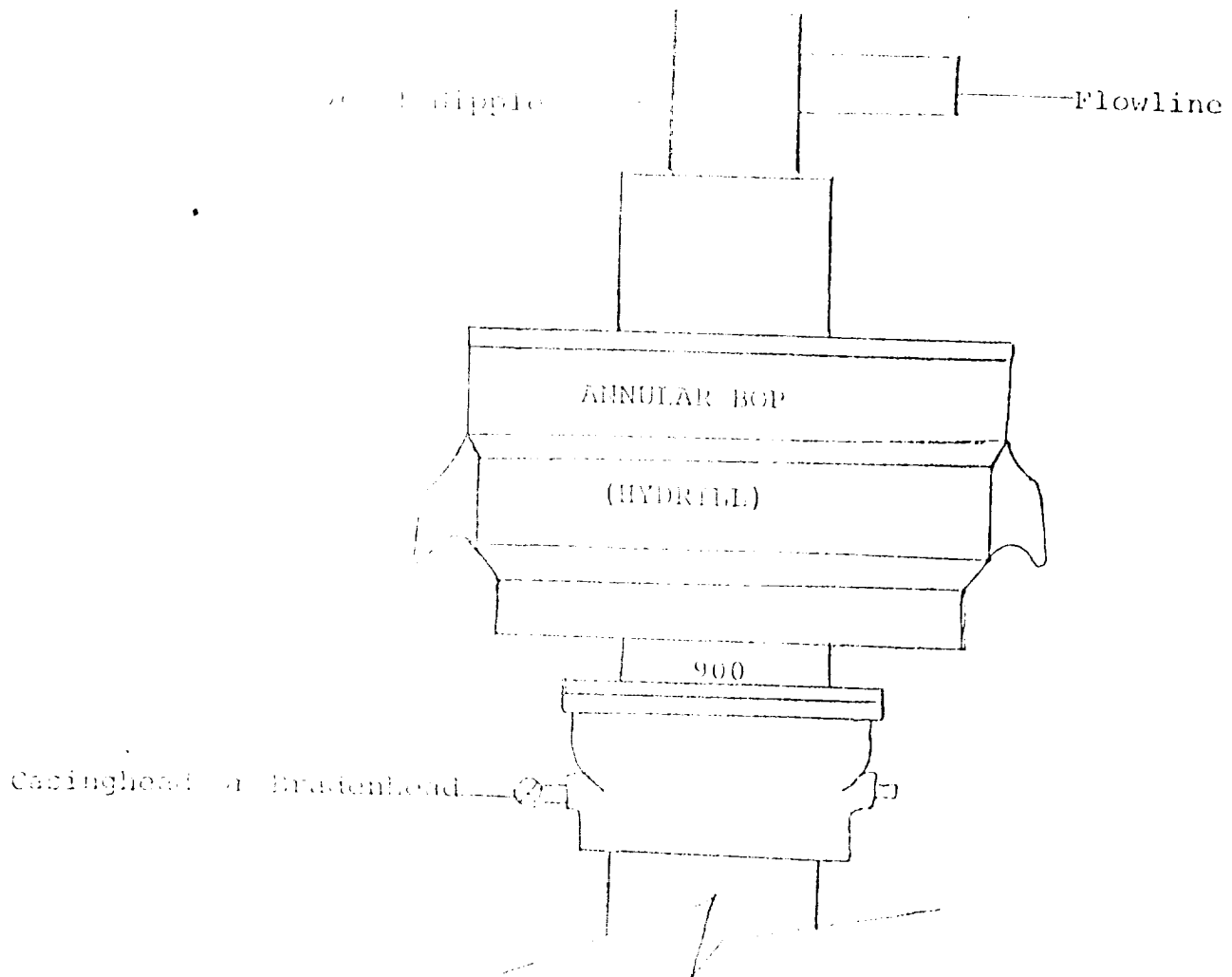
Dan R. Reddy

Certificate No.

NM PE&LS NO. 5412



# EXHIBIT B



## THE FOLLOWING CONSTITUTE MINIMUM BLOWOUT PREVENTER REQUIREMENTS

1. All preventers to be hydraulically operated with secondary manual control installed prior to drilling out from under casing.
2. All connections from operating manifolds to preventers to be all steel. Hole in tube a minimum of one inch in diameter.
3. The available closing pressure shall be at least 15% in excess of that required with sufficient volume to operate the BOP's.
4. All connections to and from preventer to have a pressure rating equivalent to that of the BOP's.
5. Hole must be kept filled on trips below intermediate casing.