

UNITED STATES
DEPARTMENT OF THE INTERIOR
GEOLOGICAL SURVEY

30-105-62275

5. LEASE DESIGNATION AND SERIAL NO.

NM-25638

6. IF INDIAN, ALLOTTEE OR TRIBE NAME

7. UNIT AGREEMENT NAME

8. FARM OR LEASE NAME

Clarkyle Federal

9. WELL NO.

1

10. FIELD AND POOL, OR WILDCAT

Wildcat

11. SEC., T., R., M., OR BLK.
AND SURVEY OR AREA

Sec. 23-T15S-R29E

12. COUNTY OR PARISH 13. STATE

Chaves

New Mexico

APPLICATION FOR PERMIT TO DRILL, DEEPEN, OR PLUG BACK

1a. TYPE OF WORK

DRILL ☒DEEPEN ☐PLUG BACK ☐

b. TYPE OF WELL

OIL
WELL ☒GAS
WELL ☐OTHER ☐SINGLE
ZONE ☐MULTIPLE
ZONE ☐

2. NAME OF OPERATOR

McClellan Oil Corporation

3. ADDRESS OF OPERATOR

P. O. Drawer 730 Roswell, New Mexico 88201

4. LOCATION OF WELL (Report location clearly and in accordance with any State requirements.)

At surface

660' FNL & 1980' FEL

At proposed prod. zone

same

14. DISTANCE IN MILES AND DIRECTION FROM NEAREST TOWN OR POST OFFICE*

14 miles north of Loco Hills, New Mexico

15. DISTANCE FROM PROPOSED*

LOCATION TO NEAREST
PROPERTY OR LEASE LINE, FT.
(Also to nearest drlg. unit line, if any)

660'

16. NO. OF ACRES IN LEASE

120

17. NO. OF ACRES ASSIGNED
TO THIS WELL

40

18. DISTANCE FROM PROPOSED LOCATION*

TO NEAREST WELL, DRILLING, COMPLETED,
OR APPLIED FOR, ON THIS LEASE, FT.

N/A

19. PROPOSED DEPTH

3900'

20. ROTARY OR CABLE TOOLS

Rotary

21. ELEVATIONS (Show whether DF, RT, GR, etc.)

3921 GL

22. APPROX. DATE WORK WILL START*

6/25/85

23.

PROPOSED CASING AND CEMENTING PROGRAM

SIZE OF HOLE	SIZE OF CASING	WEIGHT PER FOOT	SETTING DEPTH	QUANTITY OF CEMENT
10 3/4"	8 5/8"	24#	400'	250 Sx Cl. "C" circulate
7 7/8"	4 1/2"	10.5#	3900'	500 Sx Cl. "C"

Propose to drill to approximately 3900 feet in order to test the San Andres formation. If production is indicated, will run production casing and attempt completion.

Mud Program: Will drill the surface hole with fresh water to 400 feet and will drill out from the surface casing to total depth with brine water.

BOP Program: Will use 10" Series 900 Type "E" Shaffer double hydraulic 6000 psi test, 3000 psi working pressure blowout preventer. The BOP will be installed while rigging up and be used full time. See Exhibit "E".

IN ABOVE SPACE DESCRIBE PROPOSED PROGRAM: If proposal is to deepen or plug back, give data on present productive zone and proposed new productive zone. If proposal is to drill or deepen directionally, give pertinent data on subsurface locations and measured and true vertical depths. Give blowout preventer program, if any.

24.

SIGNED

Georgel Smith

TITLE

Agent for:

McClellan Oil Corporation

DATE May 16, 1985

(This space for Federal or State office use)

PERMIT NO.

APPROVAL DATE

APPROVED BY

S/Phil Kirk

TITLE

Area Manager

DATE

6-7-85

CONDITIONS OF APPROVAL, IF ANY:

Routed IDI
API & NL
6-14-85

NEW MEXICO OIL CONSERVATION COMMISSION
WELL LOCATION AND ACREAGE DEDICATION PLAT

Form C-102
Supersedes C-128
Effective 1-1-65

All distances must be from the outer boundaries of the Section.

Operator McClellan Oil Corporation			Lease Clarkyle Federal			Well No. 1
Well Letter B	Section 23	Township 15 South	Range 29 East	County Chaves		

Actual Well Location of Well:

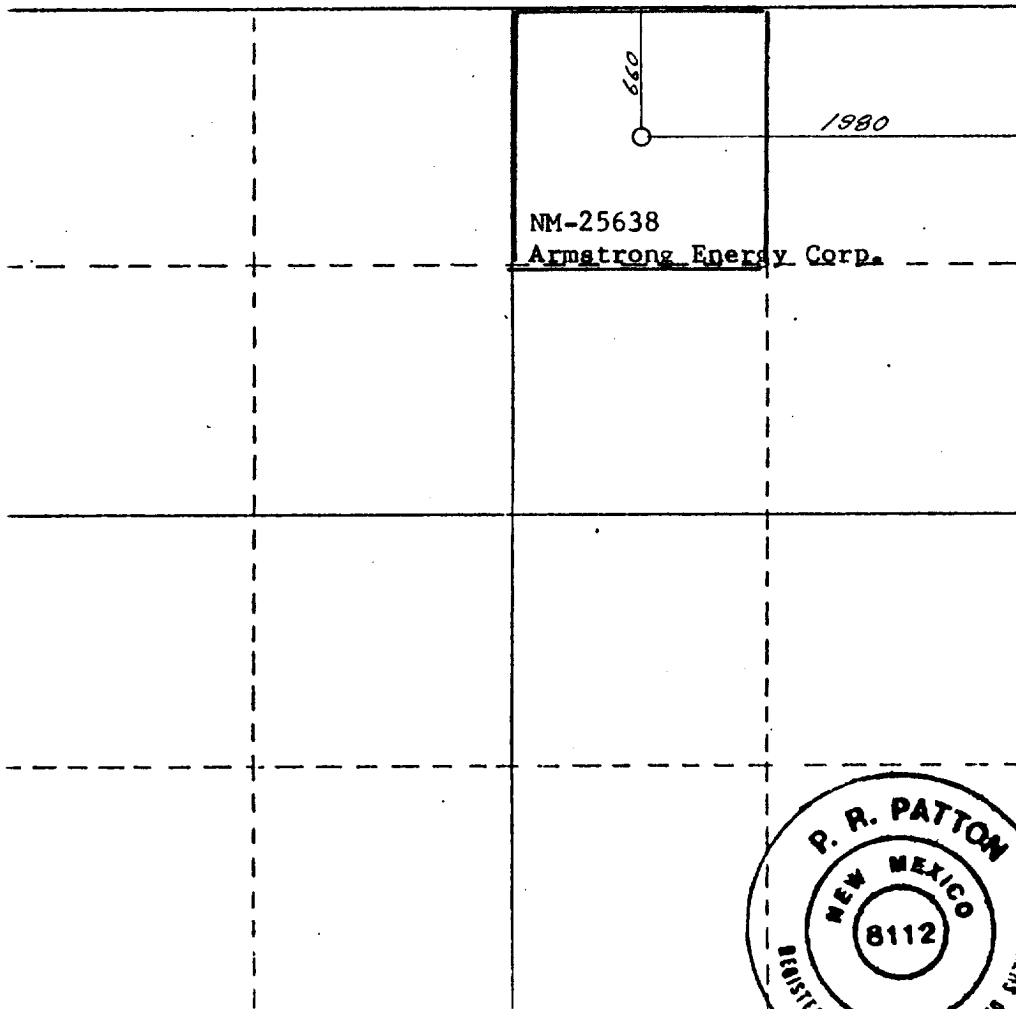
660	feet from the	North	line and	1980	feet from the	East	line
Sound Level Elev. 3921	Producing Formation San Andres		Post	Wildcat <i>Submarine SA</i>		Dedicated Acreage 40	Acres

1. Outline the acreage dedicated to the subject well by colored pencil or hatchure marks on the plat below.
2. If more than one lease is dedicated to the well, outline each and identify the ownership thereof (both as to working interest and royalty).
3. If more than one lease of different ownership is dedicated to the well, have the interests of all owners been consolidated by communitization, unitization, force-pooling, etc?

☐ Yes ☐ No If answer is "yes," type of consolidation _____

If answer is "no," list the owners and tract descriptions which have actually been consolidated. (Use reverse side of this form if necessary.) _____

No allowable will be assigned to the well until all interests have been consolidated (by communitization, unitization, forced-pooling, or otherwise) or until a non-standard unit, eliminating such interests, has been approved by the Commission.



CERTIFICATION

I hereby certify that the information contained herein is true and complete to the best of my knowledge and belief.

George R. Smith

Name
George R. Smith

Position
Agent for:

Company
McClellan Oil Corp.

Date
May 16, 1985

I hereby certify that the well location shown on this plat was plotted from field notes of actual surveys made by me or under my supervision, and that the same is true and correct to the best of my knowledge and belief.

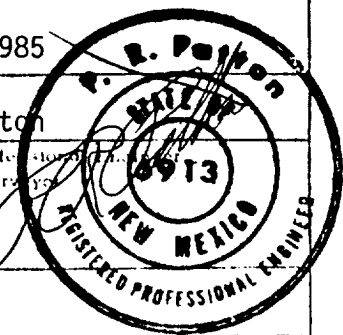
May 8, 1985

Date Surveyed
P.R. Patton

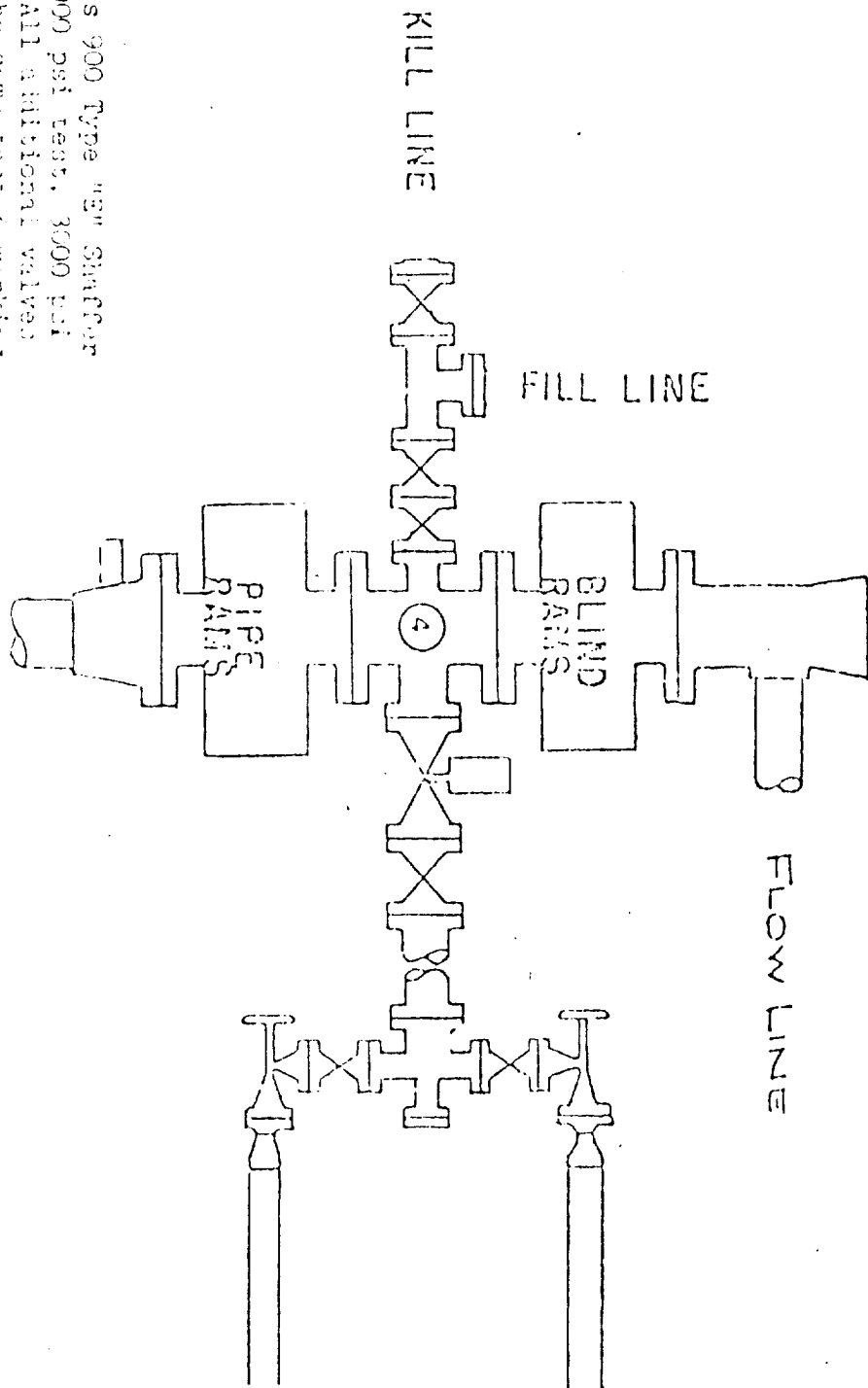
Registered Professional Engineer
and/or Land Surveyor

8112

Certificate No.



WEK DRILLING CO., INC. - Rig 1 & 3
BLOWOUT PREVENTER SPECIFICATION



BOP's are 10" Series 900 Type "W" Shut-off
 Double Hydraulic 6000 psi test, 3000 psi
 working pressure. All additional valves
 & connections are the same test & working
 pressure.

EXHIBIT "E"
 McClellan Oil Corporation
 Clarkyle Federal, Well No. 1
 BOP Specification

APPLICATION FOR DRILLING

McCLELLAN OIL CORPORATION
Clarkyle Federal, Well No. 1
660' FNL & 1980' FEL, Sec. 23-T15S-R29E
Chaves County, New Mexico
Lease No.: NM-25638
(Exploratory Well)

In conjunction with Form 9-331C, Application for Permit to Drill subject well, McClellan Oil Corporation submits the following items of pertinent information in accordance with BLM requirements:

1. The geologic surface formation is recent Permian with quaternary alluvium and other surficial deposits.
2. The estimated tops of geologic markers are as follows:

Salt	408'	Queen	1908'
Yates	1177'	San Andres	2600'
7-Rivers	1753'	T. D.	3900'
3. The estimated depth at which anticipated water, oil or gas formations are expected to be encountered:

Water: Random fresh water sands from surface to 300'[±].

Gas: None expected.

Oil: In the Queen at 1908'.
In the San Andres at 2600'.
4. Proposed Casing Program: See Form 9-331C.
5. Pressure Control Equipment: See Form 9-331C and Exhibit "E".
6. Mud Program: See Form 9-331C.
7. Auxiliary Equipment: Blowout preventer, gas detector, kelly cock, pit level monitor, flow sensors and stabbing valves.
8. Testing, Logging and Coring Program:

Drill Stem Tests: None planned at this time.

Logging: Dual Ind. Laterolog	Surf. Csg. to T. D.
Litho-Density Comp. Nuetron	Surf. Csg. to T. D.
Micro Log	Surf. Csg. to T. D.

Coring: Plan to core the Queen.
9. No abnormal pressures or temperatures are anticipated. In the event abnormal pressures are encountered the proposed mud program will be modified to increase the mud weight.
10. Anticipated starting date: June 25, 1985.
Anticipated completion of drilling operations: Two weeks.

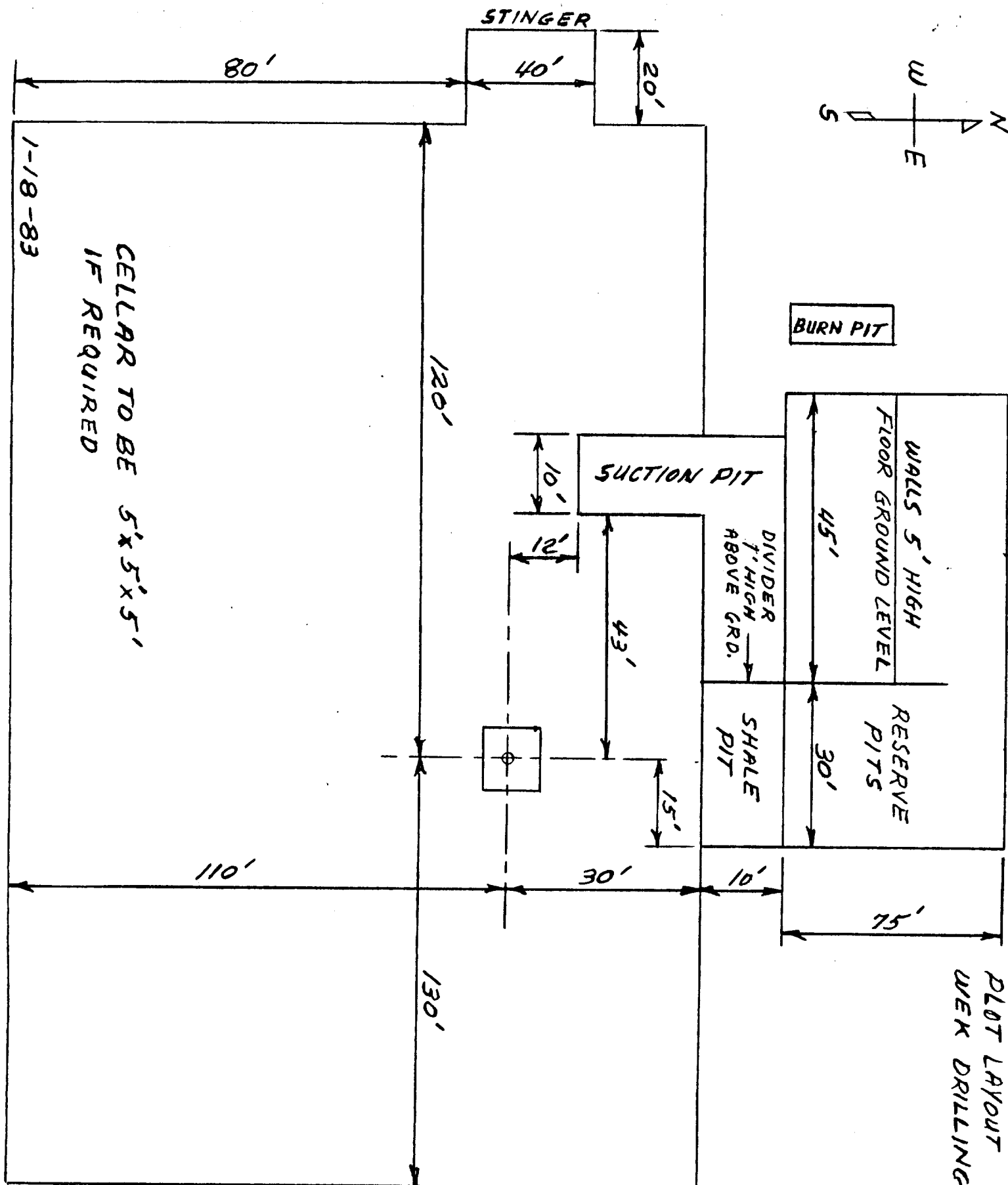
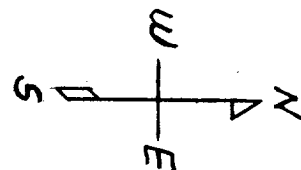


EXHIBIT "D"
McCLELLAN OIL CORPORATION
Clarkyle Federal, Well No. 1
Rig Layout