

NEW MEXICO OIL CONSERVATION COMMISSION  
WELL LOCATION AND ACREAGE DEDICATION PLAT

Form C-102  
Supersedes C-128  
Effective 1-1-65

All distances must be from the outer boundaries of the Section.

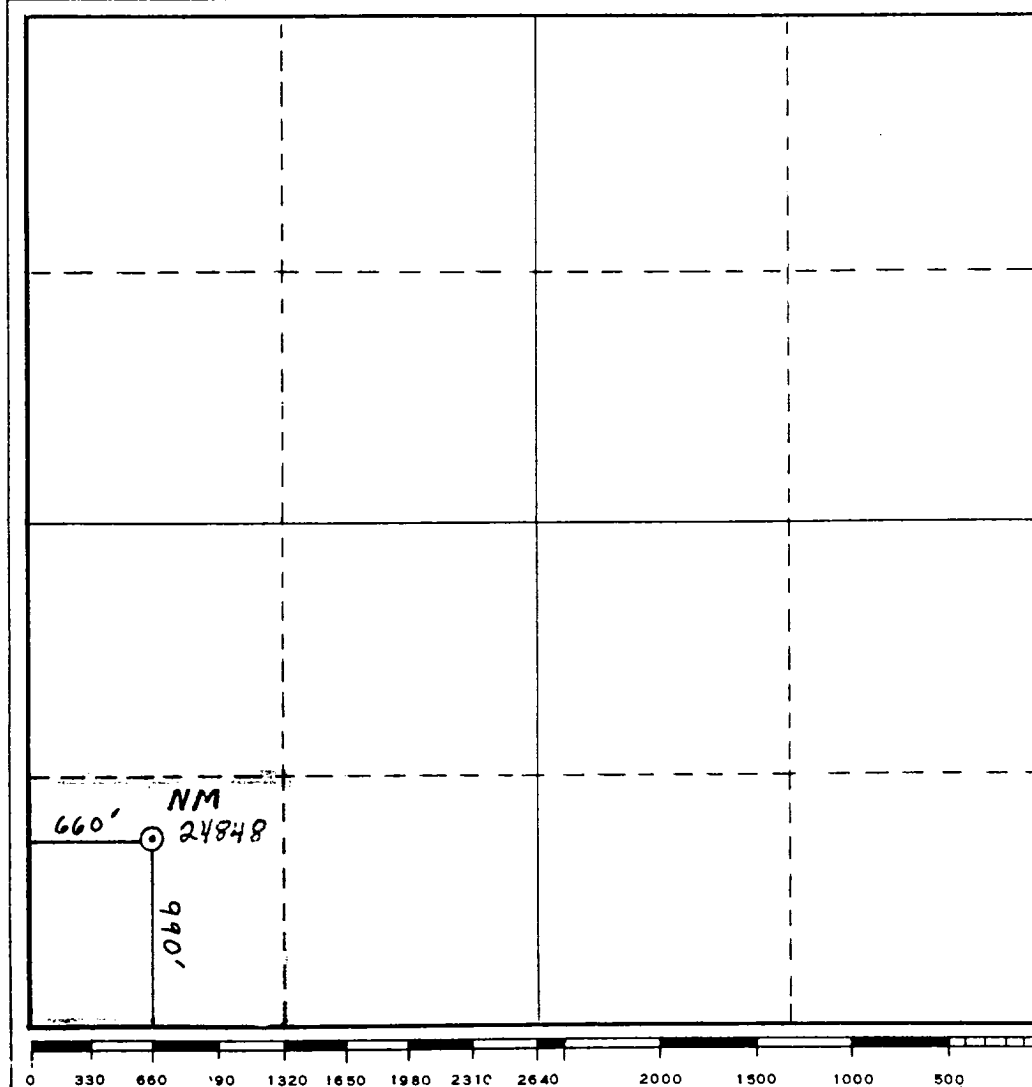
Operator <b>Yates Petroleum Corporation</b>			Lease <b>One Tree Unit</b>		Well No. <b>2</b>
Unit Letter <b>M</b>	Section <b>29</b>	Township <b>18 South</b>	Range <b>16 East</b>	County <b>Chaves</b>	
Actual Footage Location of Well: <b>990</b> feet from the <b>South</b> line and <b>660</b> feet from the <b>West</b> line					
Ground Level Elev. <b>6598'</b>	Producing Formation <b>PRE-CAMBRIAN</b>		Pool <b>WILDCAT</b>		Dedicated Acreage: <b>40</b> Acres

1. Outline the acreage dedicated to the subject well by colored pencil or hachure marks on the plat below.
2. If more than one lease is dedicated to the well, outline each and identify the ownership thereof (both as to working interest and royalty).
3. If more than one lease of different ownership is dedicated to the well, have the interests of all owners been consolidated by communitization, unitization, force-pooling, etc?

☐ Yes ☐ No If answer is "yes," type of consolidation \_\_\_\_\_

If answer is "no," list the owners and tract descriptions which have actually been consolidated. (Use reverse side of this form if necessary.) \_\_\_\_\_

No allowable will be assigned to the well until all interests have been consolidated (by communitization, unitization, forced-pooling, or otherwise) or until a non-standard unit, eliminating such interests, has been approved by the Commission.



CERTIFICATION

I hereby certify that the information contained herein is true and complete to the best of my knowledge and belief.

*Clifton May*

Name

Clifton May

Position

Regulatory Agent

Company

Yates Petroleum Corporation

Date

May 6, 1985

I hereby certify that the well location shown on this plat was plotted from field notes of actual surveys made by me or under my supervision, and that the same is true and correct to the best of my knowledge and belief.

Date Surveyed

May 4, 1985

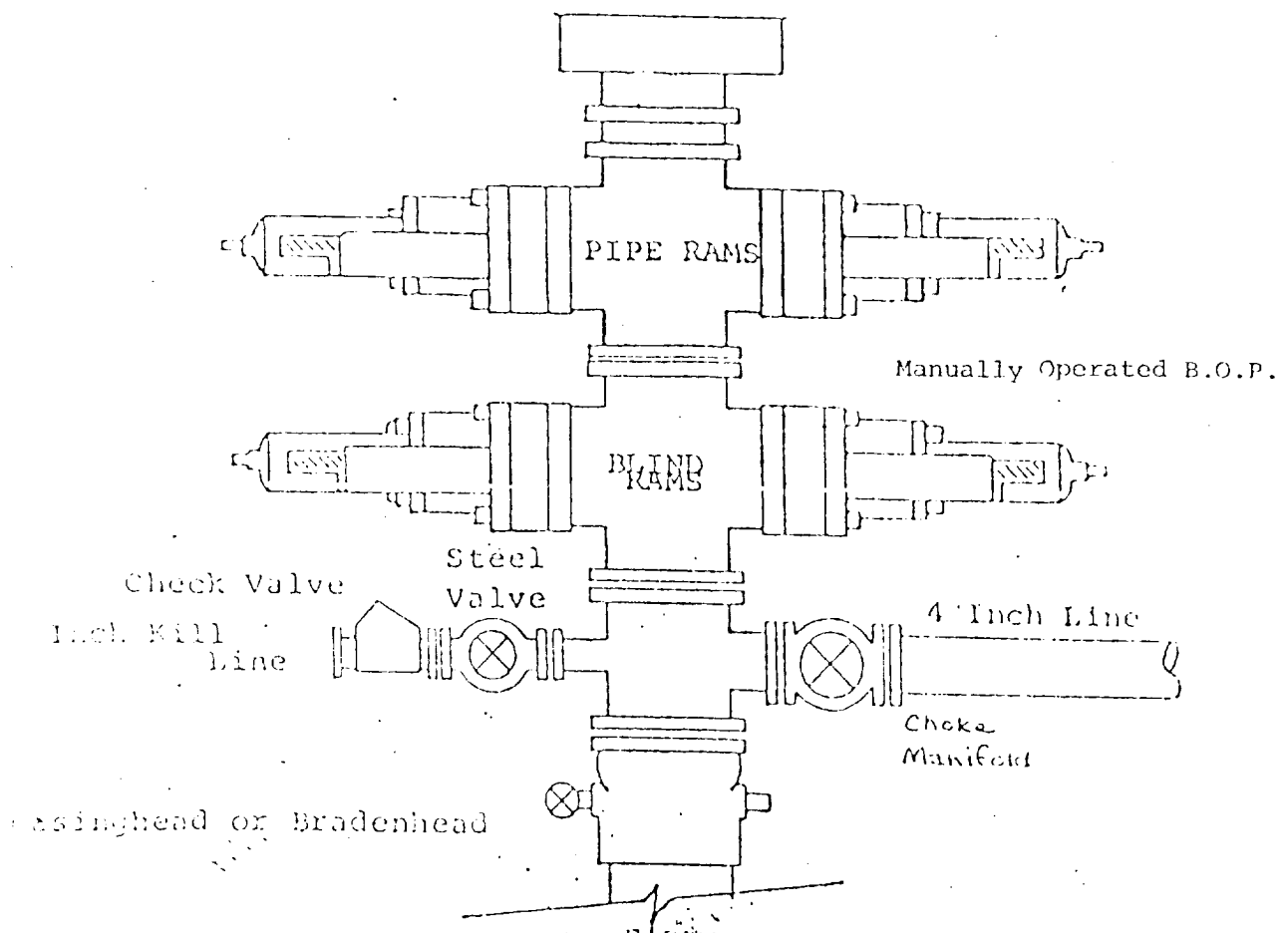
Registered Professional Engineer and/or Land Surveyor

*Don R. Reddy*

Certificate No.

NM PE&LS NO. 5412

EXHIBIT B  
BDP DIAGRAM  
RATED 3000<sup>#</sup>

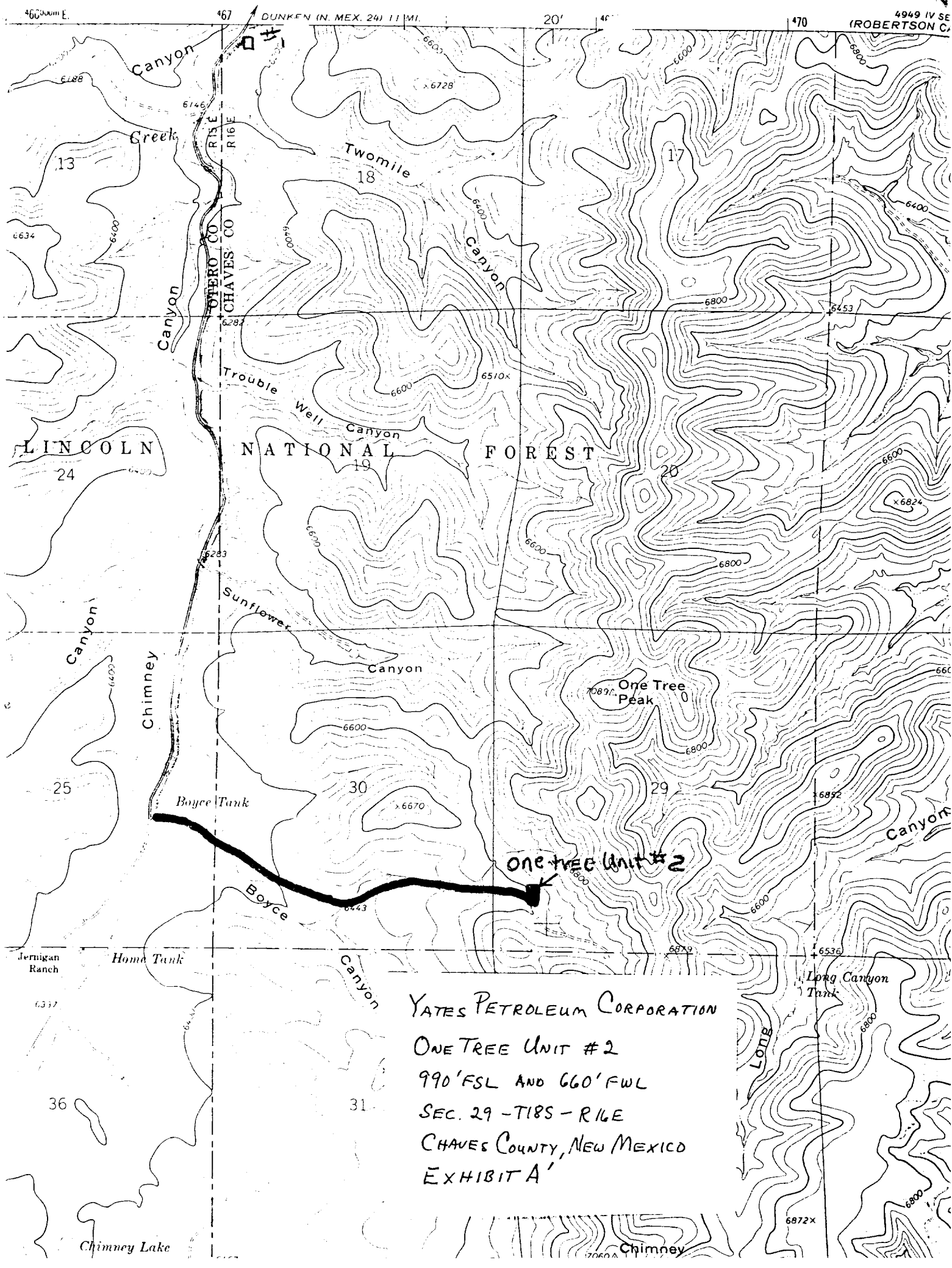


YATES PETROLEUM CORPORATION  
One Tree Unit #2  
990' FSL & 660' FWL of  
Section 29-T18S-R16E  
Chaves County, New Mexico

In conjunction with Form 9-331C, Application for Permit to Drill subject well, Yates Petroleum Company submits the following ten items of pertinent information in accordance with BLM requirements.

1. The geologic surface formation is San Andres.
2. The estimated tops of geologic markers are as follows:

Glorieta	350'
Yeso	410'
Precambrian	1950'
TD	2500'
3. The estimated depths at which anticipated water, oil or gas formations are expected to be encountered:  
  
Water: approximately 180'  
  
Oil or Gas: 1950'
4. Proposed Casing Program: See Form 9-331C.
5. Pressure Control Equipment: See Form 9-331C.
6. Mud Program: See Form 9-331C.
7. Auxiliary Equipment: Kelly Cock; pit level indicators and flow sensor equipment; sub with full-opening valve on floor, drill pipe connection.
8. Testing, Logging and Coring Program:  
  
Samples: 10' out from under surface casing to TD.  
DST's: As warranted.  
Coring: CNL-Litho Density from TD to bottom of casing; GR-CNL from bottom of casing to surface.  
Logging: One man unit on at surface to TD.
9. No abnormal pressures or temperatures are anticipated.
10. Anticipated starting date: As soon as possible after approval.

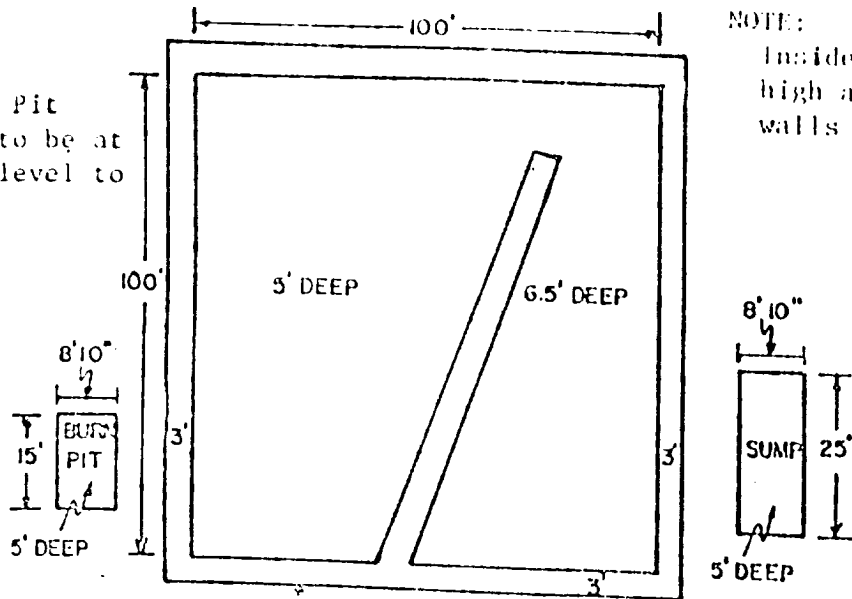


YATES PETROLEUM CORPORATION  
ONE TREE UNIT #2  
990' FSL AND 660' FWL  
SEC. 29 - T18S - R16E  
CHAVES COUNTY, NEW MEXICO  
EXHIBIT A'

# YATES PETROLEUM CORP.

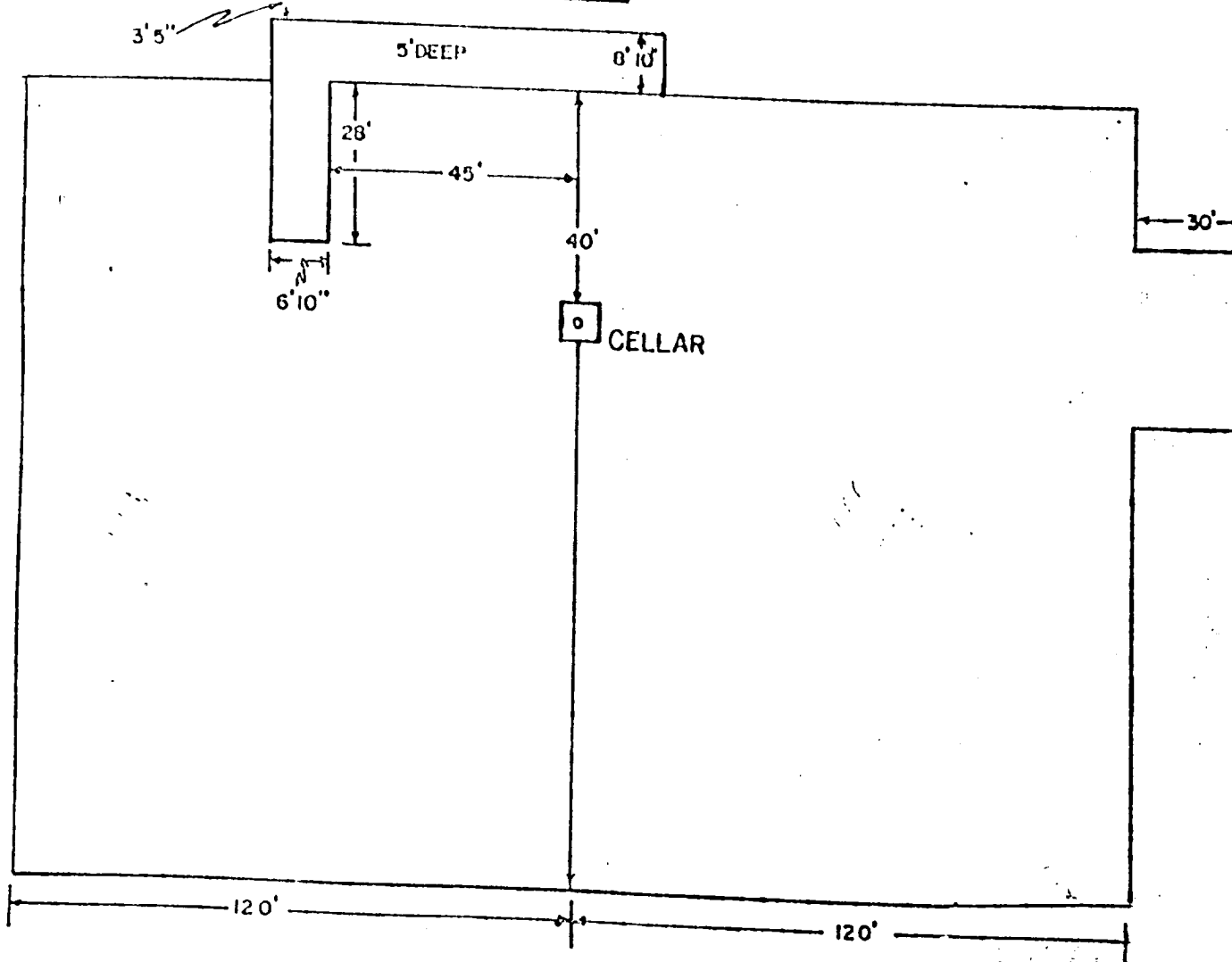
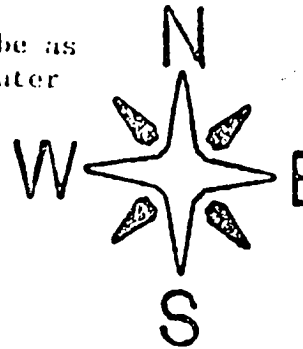
## Exhibit C

Reserve Pit  
bottom to be at  
ground level to  
1 ft.



NOTE:

Inside walls must be as  
high and wide as outer  
walls of pit.



**WRS COMPLETION REPORT**

COMPLETIONS SEC 29 TWP 18S RGE 16E  
PI# 30-T-0003 03/17/86 30-005-62276-0000 PAGE 1

NMEX CHAVES \* 990FSL 510FWL SEC  
STATE COUNTY FOOTAGE SPOT  
YATES PET WF WF  
OPERATOR  
2 ONE TREE FEDERAL  
WELL NO LEASE NAME  
6593KB 6584GR WILDCAT  
OPER ELE FIELD POOL AREA  
API 30-005-62276-0000  
LEASE TYPE NO PERMIT OR WELL ID NO  
09/29/1985 01/23/1986 ROTARY D&A  
SPUD DATE COMP DATE TYPE TOOL STATUS  
2500 PR CMBRN L & M DRLG CO 2 RIG SUB 8  
PROJ. DEPTH PROJ. FORM CONTRACTOR  
DTD 2980 FM/TD PR CMBRN  
DRILLERS T.D. LOG T.D. PLUG BACK TD OLD T.D. FORM T.D.

**LOCATION DESCRIPTION**

10 MI SW DUNKEN, NM

**WELL IDENTIFICATION/CHANGES**

FTG CHG FROM 990 FSL 510 FWL SEC  
ELEV CHGD FROM 6598 GR

**CASING/LINER DATA**

CSG 20	@	40			01
CSG 13 3/8	@	685 W/	875 SACKS		02
CSG 9 5/8	@	2252 W/	450 SACKS		03

TYPE	FORMATION	LTH	TOP DEPTH/SUB	BSE DEPTH/SUB
LOG	GLORIETA		240 6353	
LOG	YESO		300 6293	
LOG	TUBB		1730 4863	
LOG	ABO		1950 4643	
LOG	ELNB UPR DO		2150 4443	
LOG	ELNB LWR SS		2512 4081	
LOG	BLISS		2624 3969	
LOG	PR CMBRN		2704 3889	

**PRODUCTION TEST DATA**

PTS		126BW		004
ELLNBRGR OPENHOLE		2252- 2980		004
PR CMBRN				

CONTINUED IC# 300057007385

Copyrighted  
Reproduction  
Prohibited



Petroleum Information  
CORPORATION

PI-WRS-GE  
Form No 157