

UNITED STATES
DEPARTMENT OF THE INTERIOR
BUREAU OF LAND MANAGEMENT

NM OIL CONS. COMMISSION
Drawer DD SUBMIT A APPLICATION
Artesia, NM 88210 (Other sections on reverse side)

Form approved.
Budget Bureau No. 1004-0136
Expires August 31, 1985

30-205-43320
5. LEASE DESIGNATION AND SERIAL NO.

NM-036718

6. IF INDIAN, ALLOTTEE OR TRIBE NAME

7. UNIT AGREEMENT NAME

8. FARM OR LEASE NAME

Mountain States "30" Fed Cn

9. WELL NO.

1

10. FIELD AND POOL OR WILDCAT

Buffalo Valley (Morrow) gas

11. SEC., T., R., M., OR BLK. AND SURVEY OR AREA

Sec. 30, T-15-S, R-28-E

12. COUNTY OR PARISH 13. STATE

Chaves

N.M.

APPLICATION FOR PERMIT TO DRILL, DEEPEN, OR PLUG BACK

1a. TYPE OF WORK

DRILL ☒

DEEPEN ☐

PLUG BACK ☐

b. TYPE OF WELL

OIL WELL ☐

GAS WELL ☒

OTHER ☐

2. NAME OF OPERATOR

Southland Royalty Company

3. ADDRESS OF OPERATOR

21 Desta Drive, Midland, Texas 79705

4. LOCATION OF WELL (Report location clearly and in accordance with any State requirements.)

At surface

1980' FSL & 1980' FEL, Sec. 30, T-15-S, R-28-E

At proposed prod. zone

14. DISTANCE IN MILES AND DIRECTION FROM NEAREST TOWN OR POST OFFICE*

14 miles East of Lake Arthur

15. DISTANCE FROM PROPOSED*

LOCATION TO NEAREST PROPERTY OR LEASE LINE, FT. (Also to nearest drig. unit line, if any)

1980'

16. NO. OF ACRES IN LEASE

320

17. NO. OF ACRES ASSIGNED TO THIS WELL

320

18. DISTANCE FROM PROPOSED LOCATION* TO NEAREST WELL, DRILLING, COMPLETED, OR APPLIED FOR, ON THIS LEASE, FT.

NA

19. PROPOSED DEPTH

9300'

20. ROTARY OR CABLE TOOLS

Rotary

21. ELEVATIONS (Show whether DF, RT, GR, etc.)

3632.3' GR

22. APPROX. DATE WORK WILL START*

1-17-86

PROPOSED CASING AND CEMENTING PROGRAM

SIZE OF HOLE	SIZE OF CASING	WEIGHT PER FOOT	SETTING DEPTH	QUANTITY OF CEMENT
17 1/2"	13 3/8"	48#	350'	400 sx. (Circulate)
11"	8 5/8"	24#	1900'	1300 sx. (Circulate)
7 7/8"	4 1/2"	11.6#	9300'	Dependent on upper zone development. TOC @ + 7000'.

Drill 17 1/2" hole to 350'. Set 13 3/8" csg @ 350'. Cmt w/400 sx. Circ. Drill 11" hole to 1900'. Set 8 5/8" csg @ 1900'. Cmt w/1300 sx. Circ. Drill to TD to test the Morrow & intermediate horizons. If commercial, run 4 1/2" csg to 9300'. Cmt w/ sufficient volume to bring above all prospective zones. Estimated TOC @ 7000'. Perf & stimulate Morrow for production.

MUD PROGRAM: 0-350' Spud mud; 350-1900' Fresh H₂O; 1900-8800' Fresh H₂O Multi-mul; 8800-TD cut brine w/Drispac. MW 9-9.2#, VIS 32-36, 6 cc. No abnormal pressures or temperatures anticipated at TD.

BOP PROGRAM: 10"-3M BOP stack to be installed on 8 5/8" and left on for remainder of drilling. Stack to consist of annular BOP, blind ram BOP and one pipe ram BOP. Test BOP's after setting 8 5/8" csg and at 5500' w/Yellow Jacket, Inc.

Posted API
ID-1, NL
2-14-86

IN ABOVE SPACE DESCRIBE PROPOSED PROGRAM: If proposal is to deepen or plug back, give data on present productive zone and proposed new productive zone. If proposal is to drill or deepen directionally, give pertinent data on subsurface locations and measured and true vertical depths. Give blowout preventer program, if any.

24.

SIGNED

Danell Roberts

TITLE Operations Engineer

DATE 12/31/85

(This space for Federal or State office use)

PERMIT NO.

APPROVAL DATE

APPROVED BY

S/Phil Kirk

TITLE Area Manager

DATE 2-10-86

CONDITIONS OF APPROVAL, IF ANY:

*See Instructions On Reverse Side

NEW MEXICO OIL CONSERVATION COMMISSION
WELL LOCATION AND ACREAGE DEDICATION PLAT

Form C-122
Supersedes C-128
Effective 1-1-65

All distances must be from the outer boundaries of the Section

Operator SOUTHLAND ROYALTY COMPANY		Lease MOUNTAIN STATES 30 FED. COM.		Well No. 1
Map Letter J	Section 30	Township 15 SOUTH	Range 18 EAST	County CHAVES
Actual Footage Location of Well:				
1980 feet from the SOUTH		1980 feet from the EAST		Use
Ground Level Elev. 3632.3'	Producing Formation Morrow	Pool Buffalo Valley	Estimated Acreage 320	Acres

1. Outline the acreage dedicated to the subject well by colored pencil or hatchure marks on the plat below.
2. If more than one lease is dedicated to the well, outline each and identify the ownership thereof (both as to working interest and royalty).
3. If more than one lease of different ownership is dedicated to the well, have the interests of all owners been consolidated by communitization, unitization, forced-pooling, etc?

RECEIVED BY
FEB 10 1986
O. C. B.
ARTESIA, OFFICE

☒ Yes ☐ No If answer is "yes" type of consolidation Communitization

If answer is "no" list the owners and tract descriptions which have actually been consolidated (Use reverse side of this form if necessary.)

No allowable will be assigned to the well until all interests have been consolidated (by communitization, unitization, forced-pooling, or otherwise) or until a non-standard unit, eliminating such interests, has been approved by the Commission.

HUSKEY & DEPCO 0304758		DEPCO 036718	
SOUTHLAND ROYALTY COMPANY 036718		SOUTHLAND ROYALTY COMPANY 036718	
U.S.		U.S.	
330 660 90 1320 1680 1980 2340 2640		2000 1500 1000 500	

CERTIFICATION

I hereby certify that the information contained herein is true and complete to the best of my knowledge and belief.

Darrell Roberts

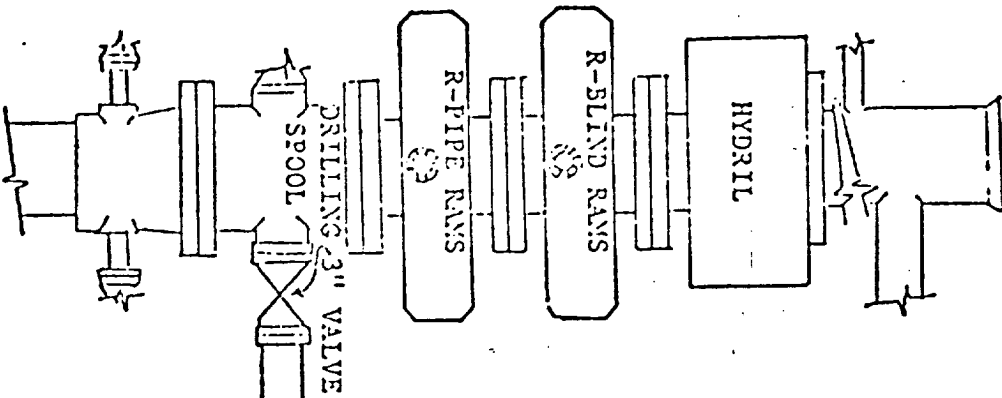
Darrell Roberts
Operations Engineer
Southland Royalty Company
12-31-85

I hereby certify that the well location shown on this plat was plotted from field notes of actual surveys made by me or under my supervision, and that the same is true and correct to the best of my knowledge and belief.

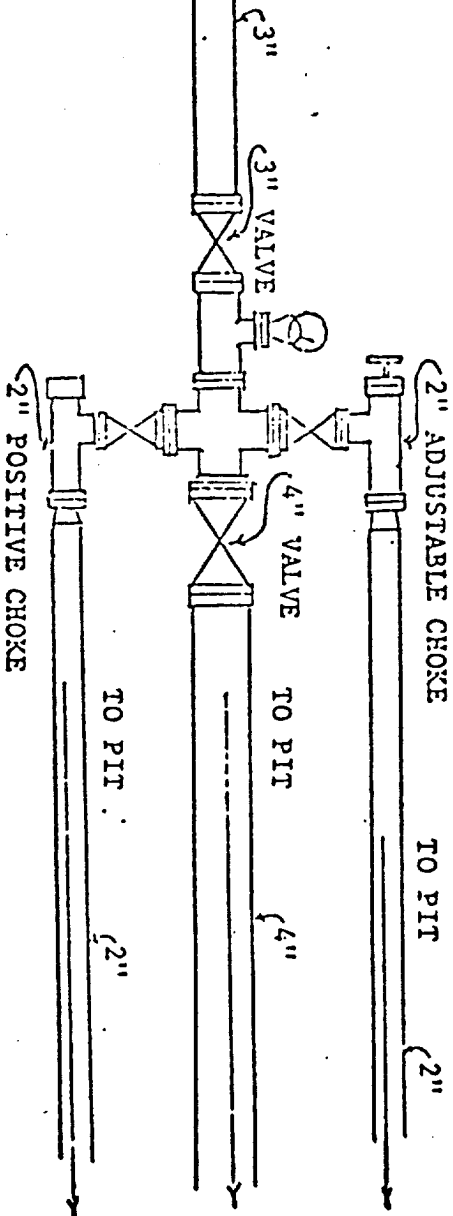
Date Surveyed
DECEMBER 20, 1985

Registered Professional Engineer and/or Land Surveyor
John W. West

Certificate No. JOHN W. WEST, 676
RONALD J. EIDSON, 3239



BLOW OUT PREVENTION EQUIPMENT
 10" 900s ALL FLANGED CONNECTIONS
 3,000# WORKING PRESSURE - 6,000# TEST



SOUTHLAND ROYALTY COMPANY

Mountain States "30" Federal Com No. 1
1980' FSL & 1980' FEL
Sec. 30, T-15-S, R-28-E
Chaves County, New Mexico
NM-036718

To supplement USGS Form 9-331C "Application to Drill the following additional information is submitted concerning questions on Page 5 of NTL-6:

1. See Form 9-331C.
2. See Form 9-331C.
3. The geological name of surface formation is: Quaternary Alluvium
4. See Form 9-331C.
5. See Form 9-331C.
6. The estimated tops of important geological markers are:

Yates	350'	Glorieta	3190'	Cisco	7395'
Queen	1115'	Tubb	4565'	Strawn	8160'
Grayburg	1565'	Abo	5335'	Atoka	8995'
San Andres	1835'	Wolfcamp	5585'	Morrow	9140'

7. The estimated depths at which anticipated water, oil gas and mineral bearing strata are as follows:

Atoka	8995'	- Gas
Morrow	9140'	- Gas

8. See Form 9-331C. All casing will be new.
9. See Form 9-331C for depths of strings. Cement volumes and additions as follows:
 - a. 13 3/8" csg: Cement w/400 sx C1 "C" cmt. Circ to surface.
 - b. 8 5/8" csg: Cement w/1100 sxs Lite cmt and 200 sxs C1 "C" neat. Circ to surface.
 - c. 4 1/2" csg: Cement w/700 sxs C1 "H". TOC @ \pm 7000'.

A caliper log will be run prior to setting 13 3/8", 8 5/8" & 4 1/2" pipe to determine exact cement volumes required.

10. The pressure control diagram is attached to Form 9-331C. The following additional information is as follows:

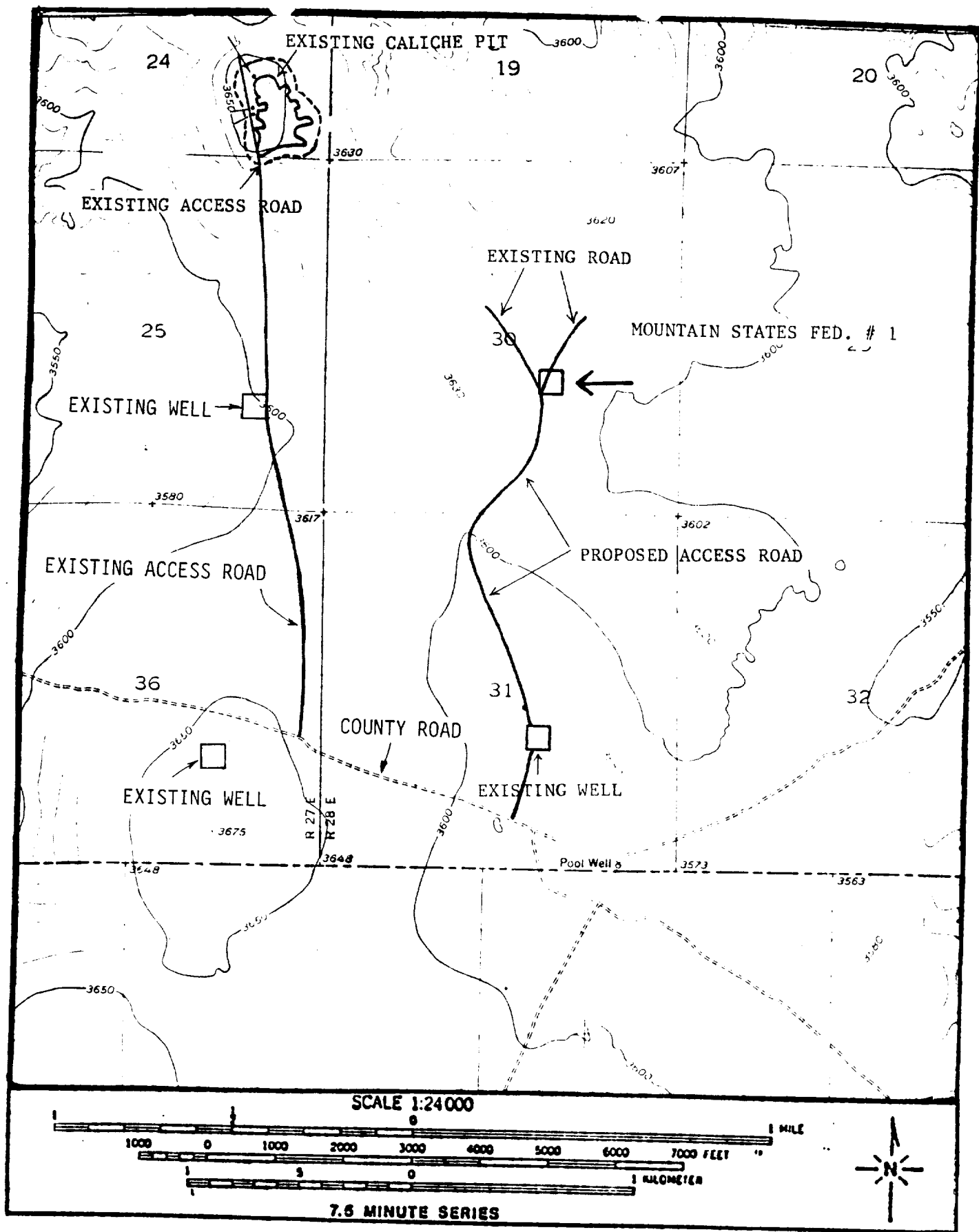


EXHIBIT "A"

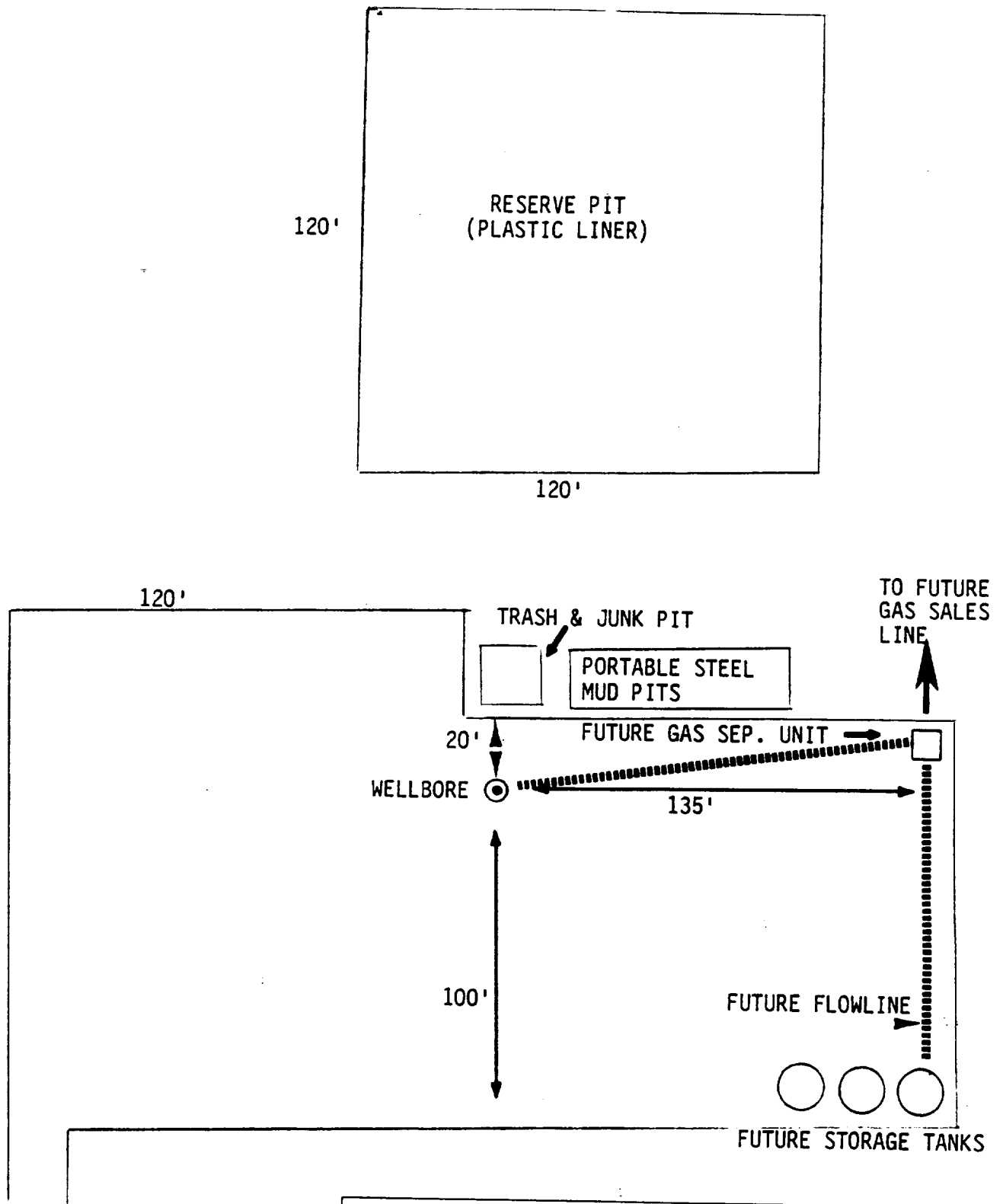


EXHIBIT "C"



Southland Royalty Company

21 DESTA DRIVE, MIDLAND, TEXAS 79705

MOUNTAIN STATES "30" FEDERAL COM NO. 1
1980' FSL & 1980' FEL
Sec. 30, T-15-S, R-28-E
Chaves County, New Mexico
NM-036718