

NEW MEXICO OIL CONSERVATION COMMISSION
WELL LOCATION AND ACREAGE DEDICATION PLAT

Form C-102
Supersedes C-128
Effective 1-1-65

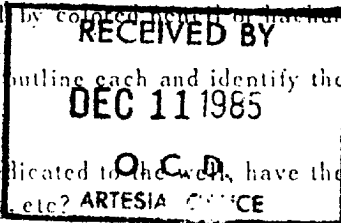
All distances must be from the outer boundaries of the Section.

Operator McClellan Oil Corporation		Lease Marlisue Queen Unit Tract 2		Well No. 8
Unit Letter K	Section 24	Township 14 South	Range 29 East	County Chaves

Actual Footage Location of Well:

2480 feet from the South	Line and	2285 feet from the West	Line
Ground Level Elev. 3801	Producing Formation Queen	Pool Double "L" Queen Assoc.	Dedicated Acreage 40 Acres

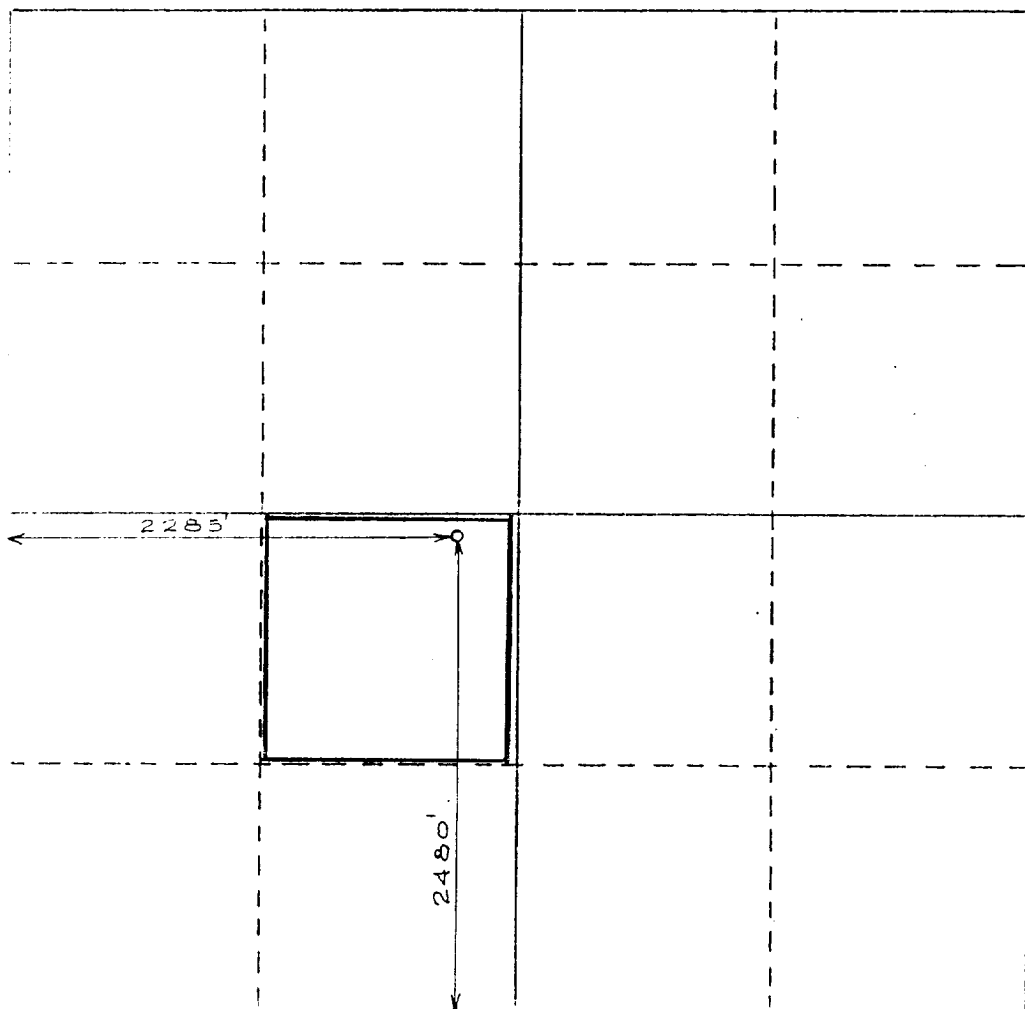
1. Outline the acreage dedicated to the subject well by colored pencil or hatch marks on the plat below.
2. If more than one lease is dedicated to the well, outline each and identify the ownership thereof (both as to working interest and royalty).
3. If more than one lease of different ownership is dedicated to the well, have the interests of all owners been consolidated by communitization, unitization, force-pooling, etc?



☐ Yes ☐ No If answer is "yes," type of consolidation _____

If answer is "no," list the owners and tract descriptions which have actually been consolidated. (Use reverse side of this form if necessary.) _____

No allowable will be assigned to the well until all interests have been consolidated (by communitization, unitization, forced-pooling, or otherwise) or until a non-standard unit, eliminating such interests, has been approved by the Commission.



CERTIFICATION

I hereby certify that the information contained herein is true and complete to the best of my knowledge and belief.

Mark McClellan

Name Mark McClellan
Position Geologist
Company McClellan Oil Corporation
Date 12/10/85

I hereby certify that the well location shown on this plat was plotted from field notes of actual surveys made by me or under my supervision, and that the same is true and correct to the best of my knowledge and belief.

December 7, 1985

Date Surveyed P.R. Patton
Registered Professional Engineer and/or Land Surveyor
8112

Certificate No.

