

UNITED STATES  
DEPARTMENT OF THE INTERIOR  
BUREAU OF LAND MANAGEMENT

APPLICATION FOR PERMIT TO DRILL, DEEPEN, OR PLUG BACK

1a. TYPE OF WORK

DRILL ☒

DEEPEN ☐

PLUG BACK ☐

b. TYPE OF WELL

OIL  
WELL ☒

GAS  
WELL ☐

OTHER ☐

SINGLE  
ZONE ☒

RECEIVED BY  
MULTIPLE  
ZONE ☐

2. NAME OF OPERATOR

McClellan Oil Corporation

3. ADDRESS OF OPERATOR

P.O. Drawer 730, Roswell, New Mexico

4. LOCATION OF WELL (Report location clearly and in accordance with any State requirements.)

At surface

990' FNL & 990' FEL, NE/4 NE/4, Unit letter A

At proposed prod. zone

Same

14. DISTANCE IN MILES AND DIRECTION FROM NEAREST TOWN OR POST OFFICE\*

13 air miles Northwest of Loco Hills, New Mexico

10. DISTANCE FROM PROPOSED\*

LOCATION TO NEAREST

PROPERTY OR LEASE LINE, FT.

(Also to nearest drlg. unit line, if any)

330'

16. NO. OF ACRES IN LEASE

480.54

17. NO. OF ACRES ASSIGNED  
TO THIS WELL

40

18. DISTANCE FROM PROPOSED LOCATION\*

TO NEAREST WELL, DRILLING, COMPLETED,  
OR APPLIED FOR, ON THIS LEASE, FT.

N/A

19. PROPOSED DEPTH

1600'

20. ROTARY OR CABLE TOOLS

Rotary

21. ELEVATIONS (Show whether DF, RT, GR, etc.)

3743' GR

22. APPROX. DATE WORK WILL START\*

ASAP

23.

PROPOSED CASING AND CEMENTING PROGRAM

SIZE OF HOLE	SIZE OF CASING	WEIGHT PER FOOT	SETTING DEPTH	QUANTITY OF CEMENT
12 1/4"	8 5/8"	23.0#	200'	150 sx(Circulated)
7 7/8"	4 1/2"	9.5#	1600'	150 sx(to isolate all oil, gas and water zones)

Propose to drill to 1600' in order to test the Queen formation. If commercial production is indicated, will run production casing and attempt completion.

B.O.P. sketch is attached.

LEASE EXPIRES AUGUST 1, 1987.



IN ABOVE SPACE DESCRIBE PROPOSED PROGRAM: If proposal is to deepen or plug back, give data on present productive zone and proposed new productive zone. If proposal is to drill or deepen directionally, give pertinent data on subsurface locations and measured and true vertical depths. Give blowout preventer program, if any.

24.

SIGNED

*Levy W. Franklin*

TITLE

Agent

DATE June 1, 1987

(This space for Federal or State office use)

PERMIT NO.

S/Phil Kirk

APPROVAL DATE

Area Manager

DATE JUN 18 1987

APPROVED BY

TITLE

CONDITIONS OF APPROVAL, IF ANY:

APPROVAL OF THIS APPLICATION DOES NOT WARRANT OR

CERTIFY THAT THE APPLICANT HOLDS LEGAL OR EQUITABLE

TITLE TO THOSE RIGHTS IN THE SUBJECT LEASE WHICH WOULD

ENTITLE THE APPLICANT TO CONDUCT OPERATIONS THEREON

\*See Instructions On Reverse Side

Title 18 U.S.C. Section 1001, makes it a crime for any person knowingly and willfully to make to any department or agency of the United States any false, fictitious or fraudulent statements or representations as to any matter within its jurisdiction.

All distances must be from the outer boundaries of the Section.

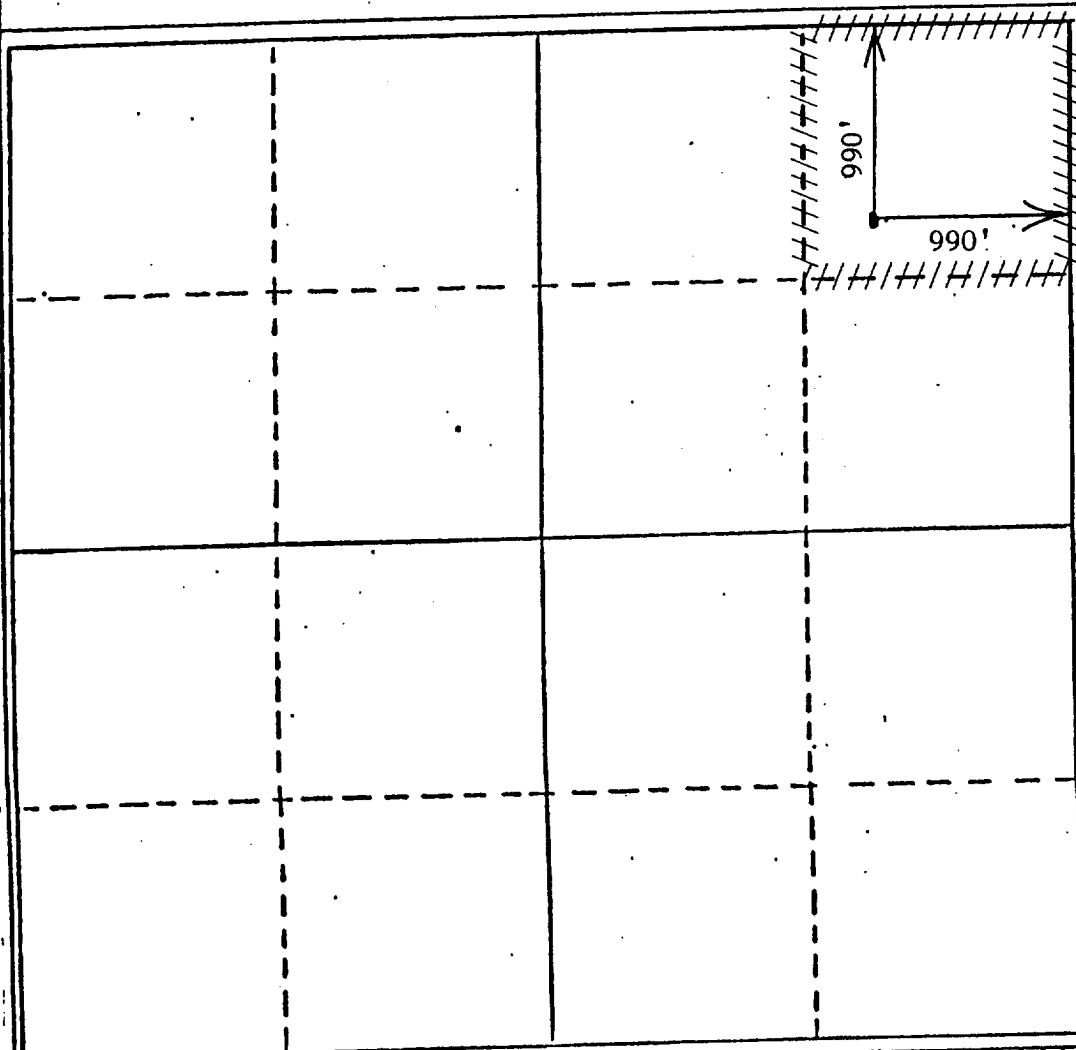
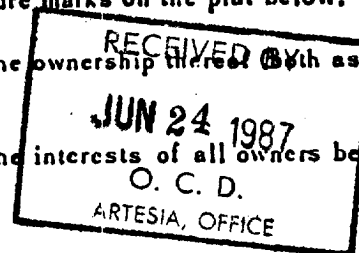
Operator <b>McCLELLAN OIL CORP.</b>		Lease <b>MO FEDERAL</b>		Well No. <b>#1</b>
Unit Letter <b>A</b>	Section <b>19</b>	Township <b>15 SOUTH</b>	Range <b>29 EAST</b>	County <b>CHAVES</b>
Actual Footage Location of Well: <b>990</b> feet from the <b>NORTH</b> line and <b>990</b> feet from the <b>EAST</b> line				
Ground Level Elev. <b>3743</b>	Producing Formation <b>QUEEN</b>	Pool <b>ROUND TANK</b>	Dedicated Acreage <b>40</b> Acres	

1. Outline the acreage dedicated to the subject well by colored pencil or hatchure marks on the plat below.
2. If more than one lease is dedicated to the well, outline each and identify the ownership thereof (both as to working interest and royalty).
3. If more than one lease of different ownership is dedicated to the well, have the interests of all owners been consolidated by communitization, unitization, force-pooling, etc?

☐ Yes ☐ No If answer is "yes," type of consolidation \_\_\_\_\_

If answer is "no," list the owners and tract descriptions which have actually been consolidated. (Use reverse side of this form if necessary.) \_\_\_\_\_

No allowable will be assigned to the well until all interests have been consolidated (by communitization, unitization, forced-pooling, or otherwise) or until a non-standard unit, eliminating such interests, has been approved by the Division.



#### CERTIFICATION

I hereby certify that the information contained herein is true and complete to the best of my knowledge and belief.

*Mark McClellan*

Name  
**Mark McClellan**

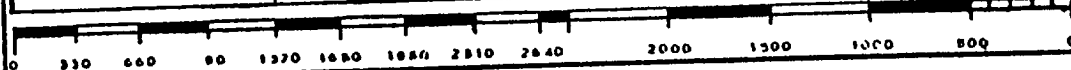
Position  
**Geologist**

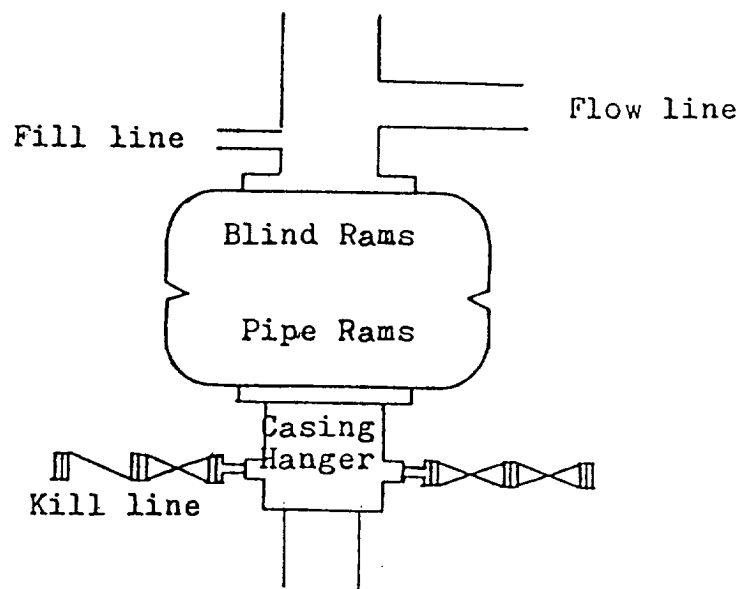
Company  
**McClellan Oil Corporation**

Date  
**5-20-87**

I hereby certify that the well location shown on this plat was plotted from field notes of actual surveys made by me or under my supervision, and that the same is true and correct to the best of my knowledge and belief.

**JOHN D. JAQUES**  
FEBRUARY 27, 1987  
Registered Professional Engineer  
and/or Land Surveyor  
John D. Jaques, E. & L.S.  
Certificate No. 6290





Blowout Preventer  
3000 psi working pressure

SUPPLEMENTAL DRILLING DATA  
McClellan Oil Corporation  
Mo Federal No. 1  
990' FNL & 990' FEL  
Sec. 19, T15S, R29E  
Chaves County, N.M.  
NM-30631

1. Geologic Name of Surface Formation: Recent

2. Estimated Geological Marker Tops:

Salt	220'
Yates	770'
Queen	1500'

3. Estimated Depths to Oil, Gas or Water:

Oil - Queen 1500-1600'

4. Proposed Casing and Cement Programs:

0 - 200'	Set approximately 200', 8 5/8", 23.0#, J-55 ST&C casing and cement to surface using 150 sx of Class 'C' cement.
0 -1600'	Set to total depth, 4 1/2", 9.5#, J-55, ST&C casing and cement to isolate all oil, gas and water zones.

5. Proposed Mud Program:

0 - 200'	Fresh water mud.
200 - T.D.	Brine water.

6. Testing, Logging and Coring Programs:

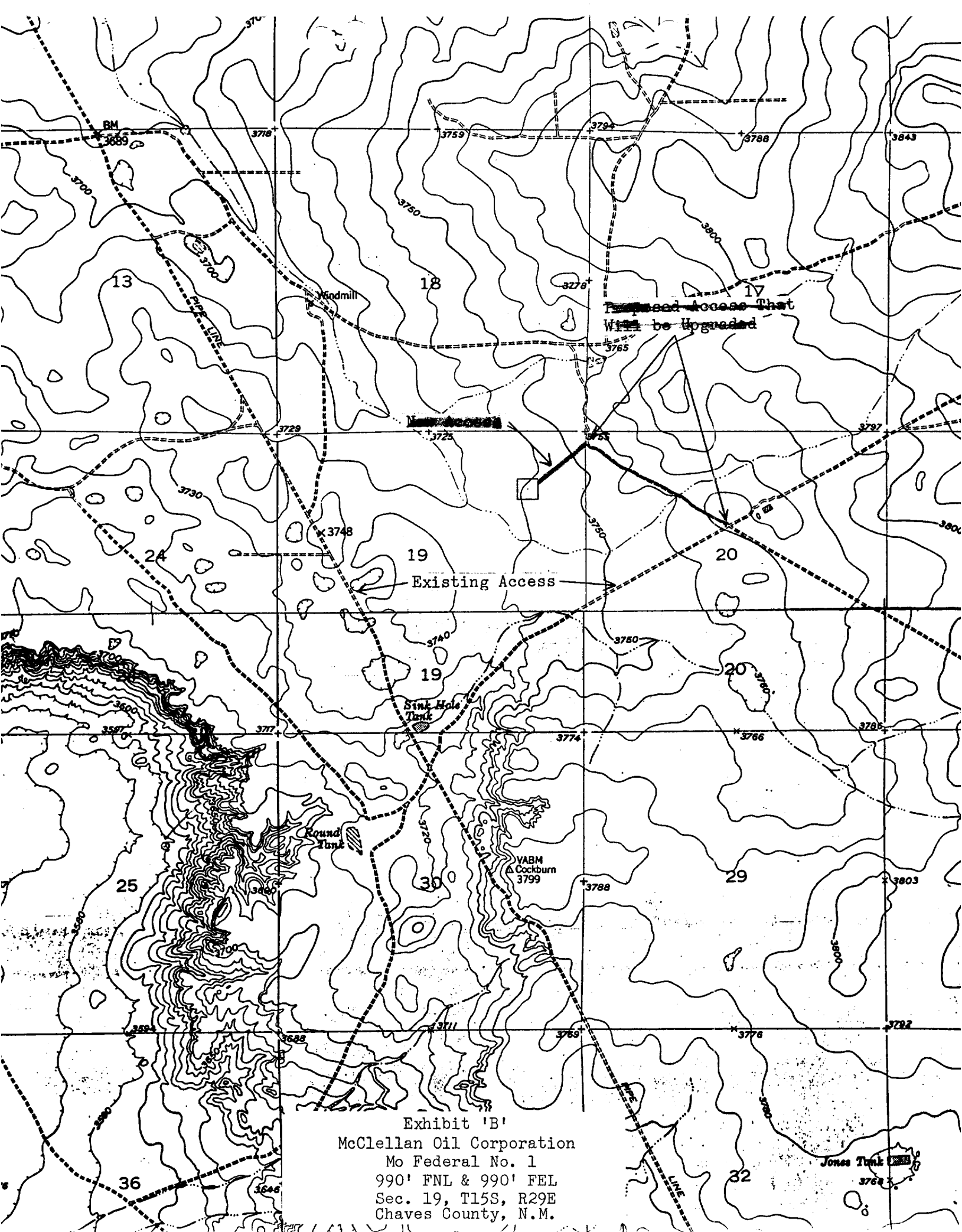
Testing:	None
Logging:	CNL-LDT, gamma ray, DLL
Coring :	None

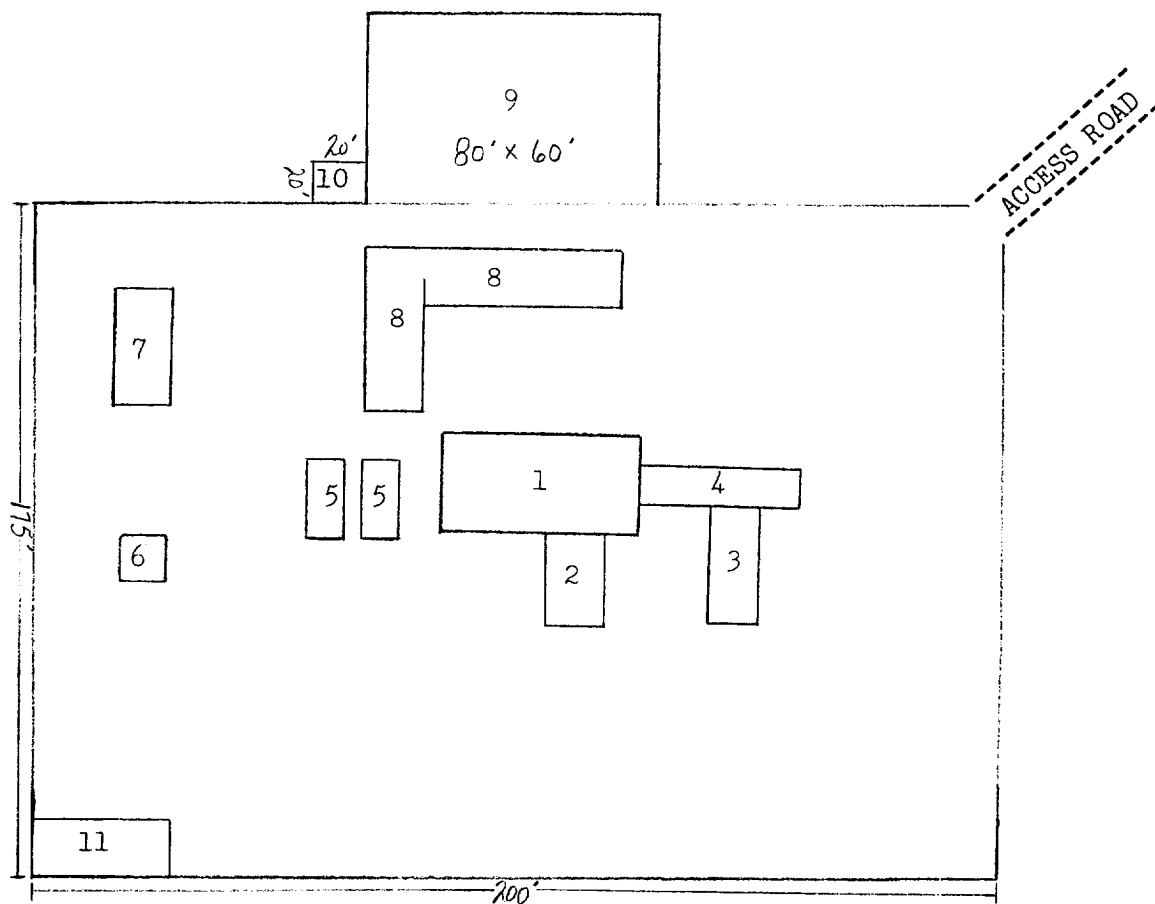
7. Auxiliary Equipment:

A kelly cock will be located on the rig floor while drilling operations are in progress.

8. Pressure Control Equipment:

A 10" 3000 psi double ram B.O.P. will be installed on the 8 5/8" casing.





- |                 |                   |
|-----------------|-------------------|
| 1. Substructure | 7. Water Tank     |
| 2. Doghouse     | 8. Working Pits   |
| 3. Piperacks    | 9. Reserve Pit    |
| 4. Catwalk      | 10. Trash Pit     |
| 5. Mud Pumps    | 11. Trailer House |
| 6. Light Plant  |                   |

Exhibit 'D'  
McClellan Oil Corporation  
Mo Federal No. 1  
990' FNL & 990' FEL  
Sec. 19, T15S, R29E  
Chaves County, N.M.