

OIL CONSERVATION DIVISION

P. O. BOX 2088

SANTA FE, NEW MEXICO 87501

Form C-102
Revised 10-1-78STATE OF NEW MEXICO
ENERGY AND MINERALS DEPARTMENT

All distances must be from the outer boundaries of the Section.

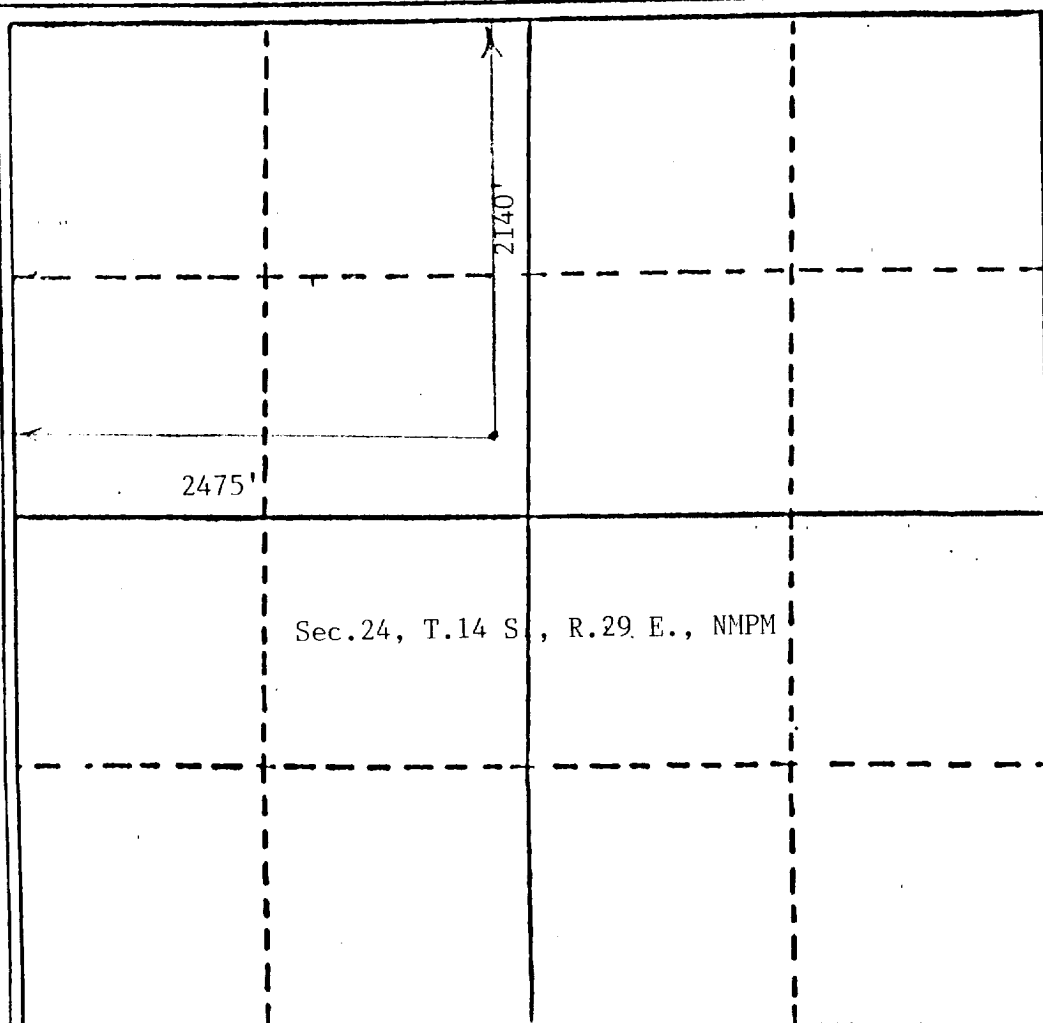
Operator McClellan Oil Corp.		Lease Marliesue Queen Unit Tract 2		Well No. 8
Unit Letter F	Section 24	Township 14 South	Range 29 East	County Chaves
Actual Wellbore Location of Well				
2140 feet from the		North line and	2475 feet from the	West line
Ground Level Elev. 3801	Producing Formation Queen	Pool Double "L" Queen Assoc.	Dedicated Acreage 40	Acres

1. Outline the acreage dedicated to the subject well by colored pencil or hatchure marks on the plat below.
2. If more than one lease is dedicated to the well, outline each and identify the ownership thereof (both as to working interest and royalty).
3. If more than one lease of different ownership is dedicated to the well, have the interests of all owners been consolidated by communitization, unitization, force-pooling, etc?

☐ Yes ☐ No If answer is "yes," type of consolidation _____

If answer is "no," list the owners and tract descriptions which have actually been consolidated. (Use reverse side of this form if necessary.) _____

No allowable will be assigned to the well until all interests have been consolidated (by communitization, unitization, forced-pooling, or otherwise) or until a non-standard unit, eliminating such interests, has been approved by the Division



CERTIFICATION

I hereby certify that the information contained herein is true and complete to the best of my knowledge and belief.

Mark McClellan

Name

Mark McClellan

Position

Geologist

Company

McClellan Oil Corporation

Date

7/23/87

I hereby certify that the well location shown on this plat was plotted from field notes of actual surveys made by me or under my supervision, and that the same is true and correct to the best of my knowledge and belief.

Date Surveyed

July 29, 1987

Registered Professional Engineer
and/or Land Surveyor

John D. Jaques
John D. Jaques, P.E. & L.S.

Certificate No.

6290