

BASIN WELL QUADRANGLE  
NEW MEXICO  
7.5 MINUTE SERIES (TOPOGRAPHIC)

5

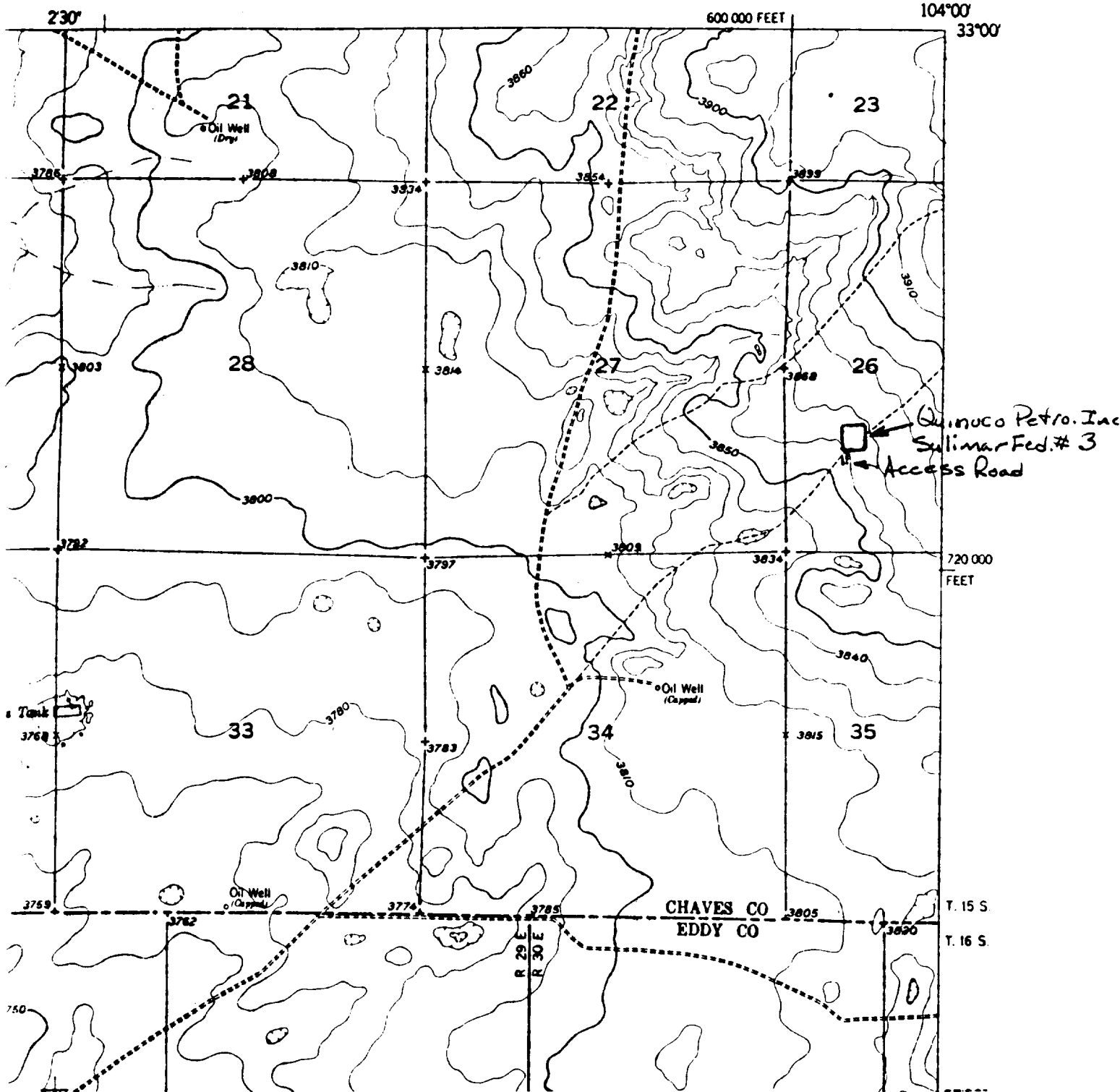


Fig. 1. USGS BASIN WELL QUADRANGLE, 7.5 Minute Series, 1;24,00, 1953, showing QUINOCO PETROLEUM, INCORPORATED's proposed Sulimar Federal Well No. 3, 990 FWL, 1650 FSL, and access road, Section 26, T15S, R29E, NMPM, Chaves County, New Mexico.