

UNITED STATES
DEPARTMENT OF THE INTERIOR
GEOLOGICAL SURVEY

NOV 03 '87

38-005-62558

5. LEASE DESIGNATION AND SERIAL NO.

NM-54400

6. IF INDIAN, ALLOTTEE OR TRIBE NAME

7. UNIT AGREEMENT NAME

8. FARM OR LEASE NAME

Shell 15 Federal

9. WELL NO.

2

10. FIELD AND POOL, OR WILDCAT

Lucky Lake Queen

11. SEC., T., R., M., OR BLK.
AND SURVEY OR AREA

Sec. 15-T15S-R29E

12. COUNTY OR PARISH

Chaves

13. STATE

New Mexico

1a. TYPE OF WORK

DRILL ☒DEEPEN ☐O. C. D.
PLUG BACK ☐
ARTESIA, OFFICE

b. TYPE OF WELL

OIL
WELL ☒GAS
WELL ☐

OTHER

SINGLE
ZONE ☐MULTIPLE
ZONE ☐

2. NAME OF OPERATOR

McClellan Oil Corporation

3. ADDRESS OF OPERATOR

P. O. Dr. 730, Roswell, New Mexico 88202

4. LOCATION OF WELL (Report location clearly and in accordance with any State requirements.*)

At surface

660' FNL & 1650' FWL

At proposed prod. zone

16 miles north of Loco Hills, NM

14. DISTANCE IN MILES AND DIRECTION FROM NEAREST TOWN OR POST OFFICE*

16 miles north of Loco Hills, NM

15. DISTANCE FROM PROPOSED*

LOCATION TO NEAREST
PROPERTY OR LEASE LINE, FT.
(Also to nearest drig. unit line, if any)

660'

16. NO. OF ACRES IN LEASE

240

17. NO. OF ACRES ASSIGNED
TO THIS WELL

40

18. DISTANCE FROM PROPOSED LOCATION*
TO NEAREST WELL, DRILLING, COMPLETED,
OR APPLIED FOR, ON THIS LEASE, FT.

990'

19. PROPOSED DEPTH

1950'

20. ROTARY OR CABLE TOOLS

Rotary Air

21. ELEVATIONS (Show whether DF, RT, GR, etc.)

3897 GL

22. APPROX. DATE WORK WILL START*

December 15, 1987

23.

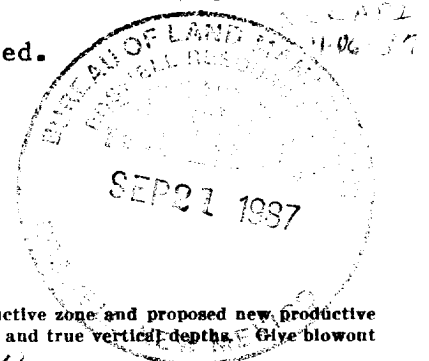
PROPOSED CASING AND CEMENTING PROGRAM

SIZE OF HOLE	SIZE OF CASING	WEIGHT PER FOOT	SETTING DEPTH	QUANTITY OF CEMENT
12 1/4"	8 5/8"	24#	300'	200 sx Cl. "C" Circulate
7 7/8"	4 1/2"	10.5#	1950'	250 sx Cl. "C"

Propose to drill to 1950' to test the Queen formation. If commercial production is indicated will run 4 1/2" casing and attempt completion.

Mud Program: None planned since well to be drilled with air. Will mud up if unexpected abnormal pressures encountered.

BOP Program: An 8" Regan 1500 psi BOP will be installed and tested.



IN ABOVE SPACE DESCRIBE PROPOSED PROGRAM: If proposal is to deepen or plug back, give data on present productive zone and proposed new productive zone. If proposal is to drill or deepen directionally, give pertinent data on subsurface locations and measured and true vertical depths. Give blowout preventer program, if any.

24.

SIGNED

David G. Smith

TITLE

Agent for:

McClellan Oil Corporation

DATE

Sept. 17, 1987

(This space for Federal or State office use)

PERMIT NO.

APPROVAL DATE

APPROVED BY

S/Levi Deike, Acting

TITLE

Area Manager

DATE

OCT 27 1987

CONDITIONS OF APPROVAL, IF ANY:

APPROVAL OF THIS APPLICATION DOES NOT WARRANT OR CERTIFY THAT THE APPLICANT HOLDS LEGAL OR EQUITABLE TITLE TO THOSE RIGHTS IN THE SUBJECT LEASE WHICH WOULD ENTITLE THE APPLICANT TO CONDUCT OPERATIONS THEREON.

All distances must be from the outer boundaries of the Section.

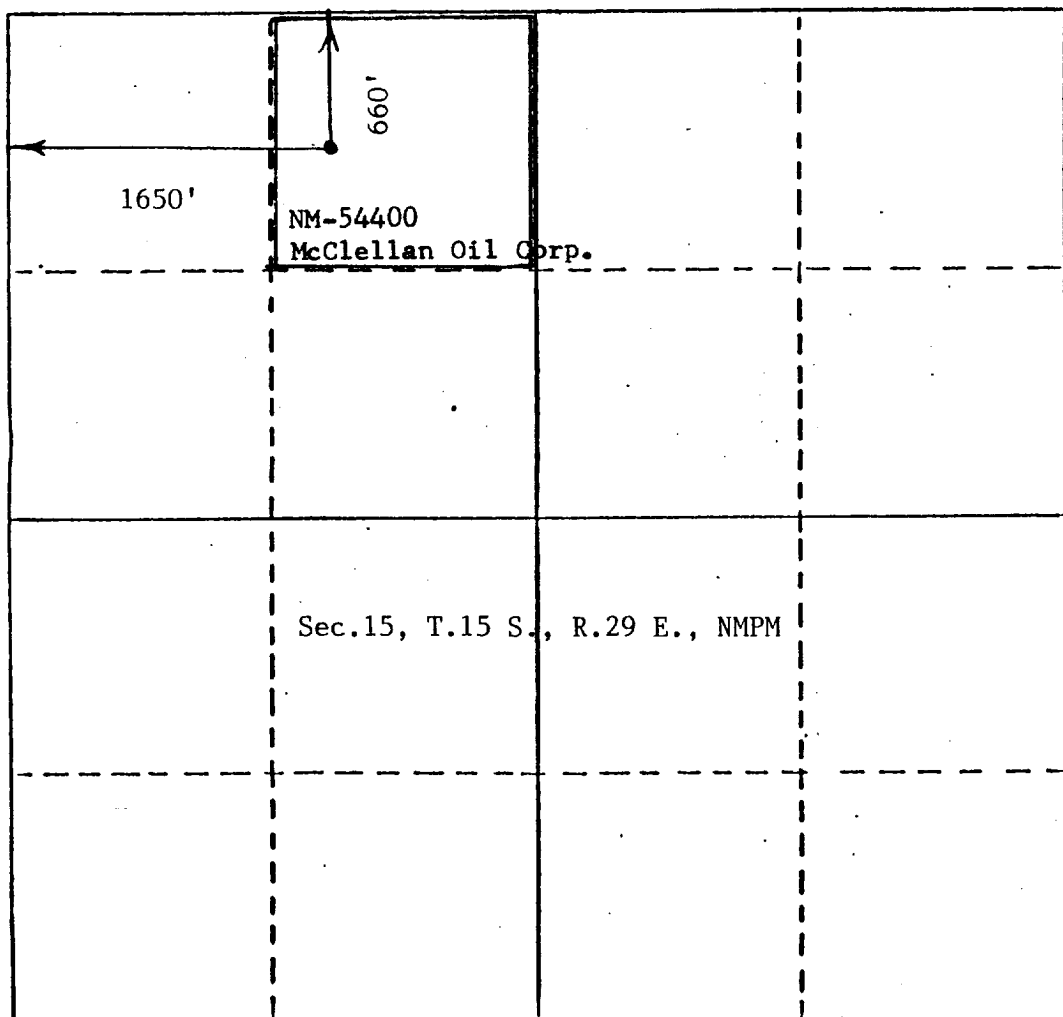
Operator McClellan Oil Corp.			Lease Shell 15 Federal		Well No. #2
Init Letter C	Section 15	Township 15 South	Range 29 East	County Chaves	
Actual Footage Location of Well: 660 feet from the North line and 1650 feet from the West line					
Ground Level Elev. 3897	Producing Formation Queen		Pool JND Lucky Lake Queen	Dedicated Acreage: 40 Acres	

1. Outline the acreage dedicated to the subject well by colored pencil or hatchure marks on the plat below.
2. If more than one lease is dedicated to the well, outline each and identify the ownership thereof (both as to working interest and royalty).
3. If more than one lease of different ownership is dedicated to the well, have the interests of all owners been consolidated by communitization, unitization, force-pooling, etc?

☐ Yes ☐ No If answer is "yes," type of consolidation _____

If answer is "no," list the owners and tract descriptions which have actually been consolidated. (Use reverse side of this form if necessary.) _____

No allowable will be assigned to the well until all interests have been consolidated (by communitization, unitization, forced-pooling, or otherwise) or until a non-standard unit, eliminating such interests, has been approved by the Division.



CERTIFICATION

I hereby certify that the information contained herein is true and complete to the best of my knowledge and belief.

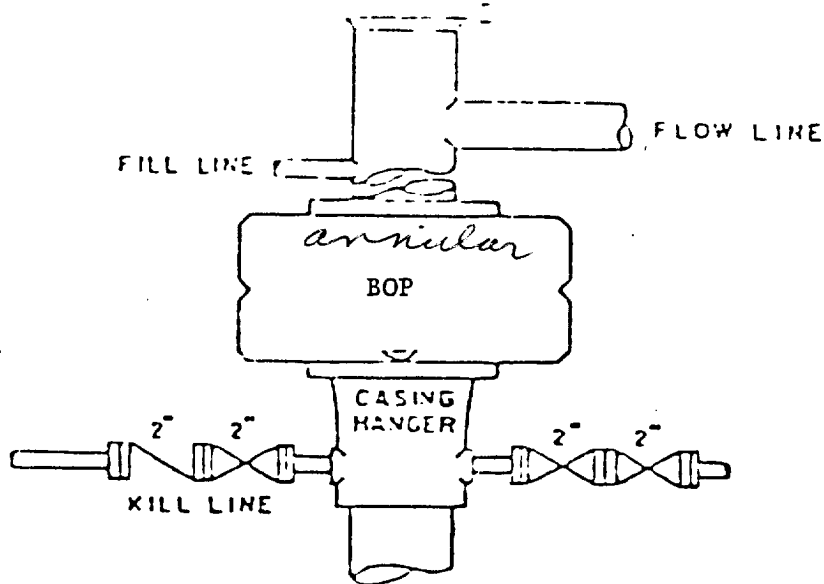
Name
George R. Smith
Position
Agent for:
Company
McClellan Oil Corporation
Date
September 17, 1987

I hereby certify that the well location shown on this plat was plotted from field notes of actual surveys made by me or under my supervision, and that the same is true and correct to the best of my knowledge and belief.

Date Surveyed
Sept. 17, 1987
Registered Professional Engineer and/or Land Surveyor
John D. Jaquess, P.E. & L.S.
Certificate No. 6290

0 330 660 990 1320 1650 1980 2310 2640 2970 3300 3630 3960 4290 4620 4950 5280 5610 5940 6270 6600

RECEIVED
OCT 30 1987
OCD
HOBBS OFFICE

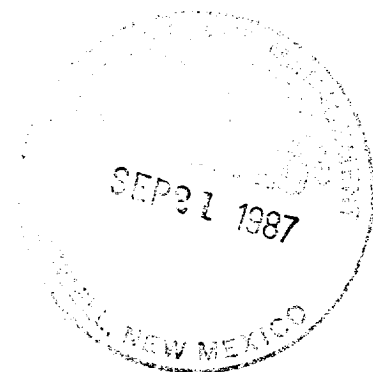


BOP STACK

EXHIBIT "E"
McCLELLAN OIL CORPORATION
Shell 15 Federal, Well No. 2
BOP Specification

APPLICATION FOR DRILLING

McCLELLAN OIL CORPORATION
Shell 15 Federal, Well No. 2
660' FNL & 1650' FWL, Sec. 15-T15S-R29E
Chaves County, New Mexico
Lease No.: NM-54400
(Exploratory Well)



In conjunction with Form 9-331C, Application for Permit to Drill subject well, McClellan Oil Corporation submits the following items of pertinent information in accordance with BLM requirements:

1. The geologic surface formation is recent Permian with quaternary alluvium and other surficial deposits.
2. The estimated tops of geologic markers are as follows:

Salt	355'	Queen	1839'
Yates	1111'	T. D.	1950'
7-Rivers	1647'		
3. The estimated depth at which anticipated water, oil or gas formations are expected to encountered:

Water: Random fresh water sands from surface to 300'+/-.

Gas: None expected.

Oil: Possible in Queen at or below 1839'.
4. Proposed Casing Program: See Form 9-331C.
5. Pressure Control Equipment: See Form 9-331C and Exhibit "E".
6. Mud Program: See Form 9-331C.
7. Auxiliary Equipment: Blowout preventer, and 10" Grant 3000 psi rotating head.
8. Testing, Logging and Coring Program:

Drill Stem Tests: None planned.

Logging: Dual Ind. Laterolog	Surf. Csg. to T.D.
Litho-Density Comp. Nuetron	Surf. Csg. to T.D.
Micro Log	Surf. Csg. to T.D.

Coring: None.
9. No abnormal pressures or temperatures are anticipated. In the event abnormal pressures are encountered the proposed mud program will be modified to increase the mud weight.
10. Anticipated starting date: December 15, 1987.
Anticipated completion of drilling operations: Two weeks.

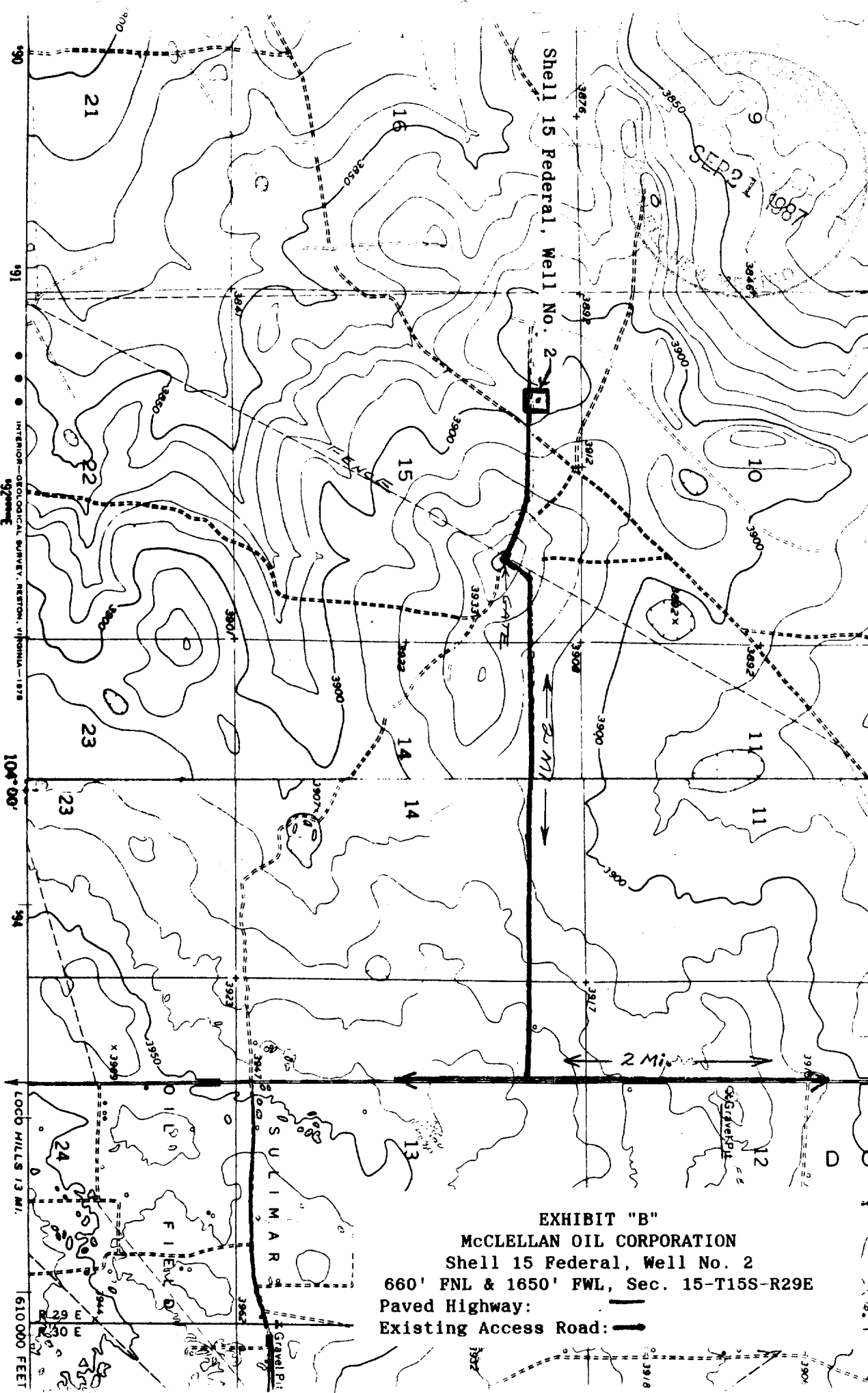


EXHIBIT "B"
 McCLELLAN OIL CORPORATION
 Shell 15 Federal, Well No. 2
 660' FNL & 1650' FWL, Sec. 15-T15S-R29E
 Paved Highway: ———
 Existing Access Road: ———

ROAD CLASSIFICATION

- Primary highway, all weather, Light-duty road, all weather, hard surface
- Secondary highway, all weather, Unimproved road, fair or dry hard surface
- Interstate Route
- U. S. Route
- State Route

Mapped, edited, and published by the Geological Survey

Control by USGS and NOS/NOAA

Topography by photogrammetric methods from aerial photographs taken 1972. Field checked 1973

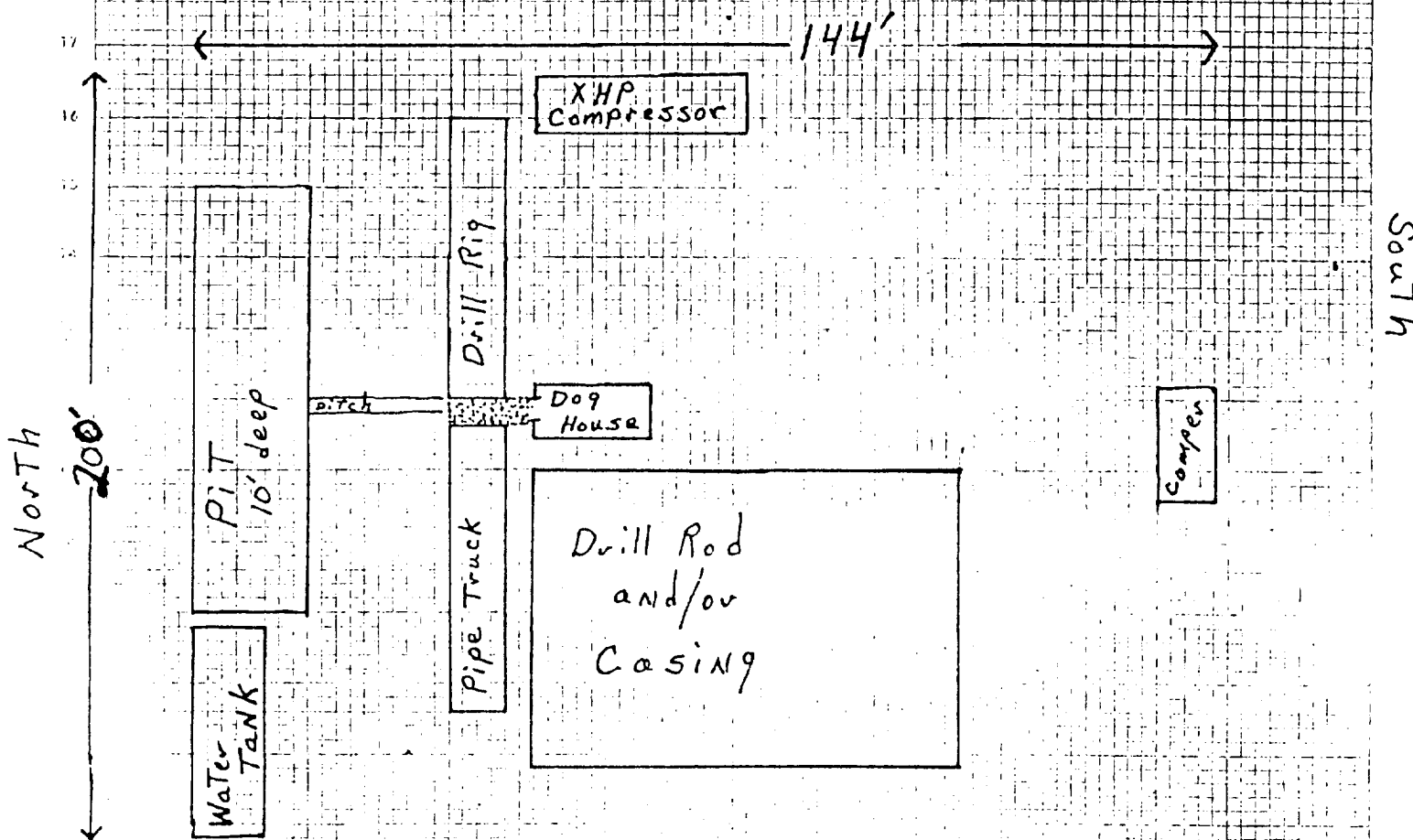
Projection and 10,000-foot grid ticks: New Mexico coordinate system, east zone (transverse Mercator) 1000-meter Universal Transverse Mercator grid ticks, zone 13, shown in blue
 1987 North American Datum

NEW MEXICO

NOTED
10/2/54
10/2/54

East

Preferred location size @ 150' x 150' Minimum



SCALE : 1 square = 2'

EXHIBIT "D"
McCLELLAN OIL CORPORATION
Shell 15 Federal, Well No. 2
Rig Layout

West