

N. M. CONG. COMMISSION Drawer DD  
Artesia, NM 88211  
DEPARTMENT OF THE INTERIOR  
BUREAU OF LAND MANAGEMENT

SUBMIT IN DUPLICATE  
(Other instructions on reverse side)

30-005-62604 C/SF  
Form approved.  
Budget Bureau No. 1004-0136  
Expires August 31, 1985

APPLICATION FOR PERMIT TO DRILL, DEEPEN, OR PLUG BACK

1A. TYPE OF WORK

DRILL ☒

DEEPEN ☐

PLUG BACK ☐

b. TYPE OF WELL

OIL WELL ☐

GAS WELL ☒

OTHER

SINGLE ZONE ☐

MULTIPLE ZONE ☐

2. NAME OF OPERATOR

Read & Stevens, Inc.

3. ADDRESS OF OPERATOR

P. O. Box 1518 Roswell, NM 88202

4. LOCATION OF WELL (Report location clearly and in accordance with any State requirements.)

At surface

1980' FSL & 990' FEL

At proposed prod. zone

14. DISTANCE IN MILES AND DIRECTION FROM NEAREST TOWN OR POST OFFICE\*

Approximately 12 miles east of Lake Arthur, NM

15. DISTANCE FROM PROPOSED\* LOCATION TO NEAREST PROPERTY OR LEASE LINE, FT.

(Also to nearest drlg. unit line, if any)

1650'

16. NO. OF ACRES IN LEASE

2520

17. NO. OF ACRES ASSIGNED TO THIS WELL

320

18. DISTANCE FROM PROPOSED LOCATION\* TO NEAREST WELL, DRILLING, COMPLETED, OR APPLIED FOR, ON THIS LEASE, FT.

3000'

19. PROPOSED DEPTH

9100'

20. ROTARY OR CABLE TOOLS

Rotary

21. ELEVATIONS (Show whether DF, RT, GR, etc.)

3495 GL

22. APPROX. DATE WORK WILL START\*

April 1, 1988

23.

PROPOSED CASING AND CEMENTING PROGRAM

SIZE OF HOLE	SIZE OF CASING	WEIGHT PER FOOT	SETTING DEPTH	QUANTITY OF CEMENT
17 1/2"	13 3/8"	54.5#	375'	300 sx circulated
12 1/4"	8 5/8"	24.0#	1800'	800 sx circulated
7 7/8"	4 1/2"	11.6#	9100'	400 sx to cover pay

Mud Program:

0' - 375' Fresh water spud mud. Mud wt. 8.8-9.2, Vis. 32-40, No W/L control.  
375' - 1,800' Fresh water native mud. Mud wt. 8.5 - 9.2, Vis. 28-34, No W/L.  
1,800' - 6,000' Cut brine water, Mud wt. 8.8-9.2, Vis. 28-32, No W/L control.  
6,000' - 8,250' Cut brine water, Mud wt. 9.0-9.5, Vis. 28-35, No W/L control.  
8,250' - 9,100' Cut brine and polymer, Mud wt. 9.0-9.5, Vis. 32-40, W/L 5-10 cc.

BOP Program: Nipple up 10" Series 900 LWS Hydraulic Schaffer Double BOP at 375'.

Test BOP, casing and choke manifold to 2500# and test daily.

Gas is not dedicated.

Post ID #1  
NL & API  
4-8-88

IN ABOVE SPACE DESCRIBE PROPOSED PROGRAM: If proposal is to deepen or plug back, give data on present productive zone and proposed new productive zone. If proposal is to drill or deepen directionally, give pertinent data on subsurface locations and measured and true vertical depths. Give blowout preventer program, if any.

24.

SIGNED

*George R. Smith*

TITLE

Agent for:

Read & Stevens, Inc.

DATE

Feb. 29, 1988

(This space for Federal or State office use)

PERMIT NO.

APPROVAL DATE

APPROVED BY

S/Phil Kirk

TITLE

Area Manager

DATE

MAR 28 1988

CONDITIONS OF APPROVAL, IF ANY:

PLEASE BE ADVISED THAT THERE WILL BE NO EXCAVATION OF FEDERALLY OWNED MINERAL MATERIAL FOR CONSTRUCTION OF THE ACCESS ROAD OR PAD WITHOUT PAYMENT IN ADVANCE.

APPROVAL OF THIS APPLICATION DOES NOT WARRANT OR CERTIFY THAT THE APPLICANT HOLDS LEGAL OR EQUITABLE TITLE TO THOSE RIGHTS IN THE SUBJECT LEASE WHICH WOULD ENTITLE THE APPLICANT TO CONDUCT OPERATIONS THEREON.

Section 1001, makes it a crime for any person knowingly and willfully to make to any department or agency of the United States any false, fictitious, or fraudulent statements or claims as to any matter within the jurisdiction of such department or agency.

STATE OF NEW MEXICO  
ENERGY AND MINERALS DEPARTMENT

OIL CONSERVATION DIVISION  
P. O. BOX 2088  
SANTA FE, NEW MEXICO 87501

Form C-102  
Revised 10-1-79

All distances must be from the outer boundaries of the Section.

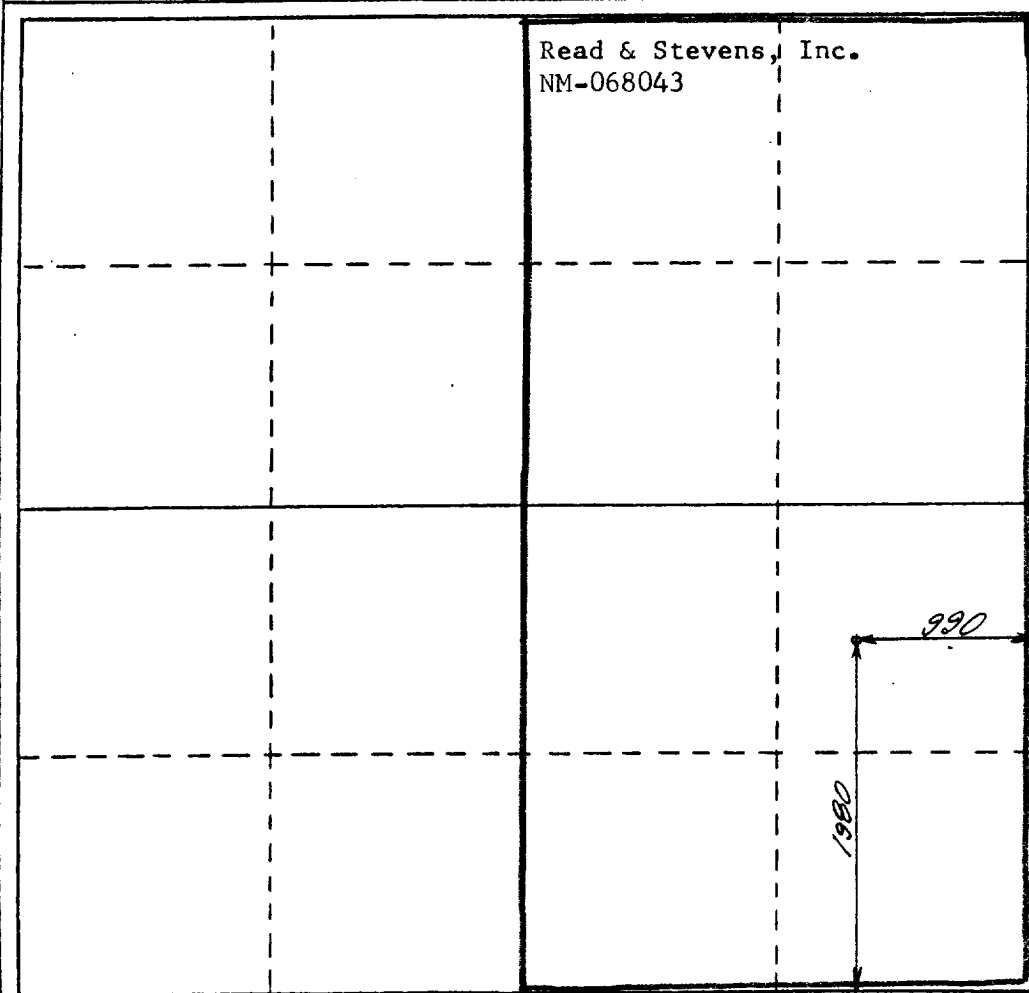
Operator <b>Read &amp; Stevens, Inc.</b>			Lease <b>Harris Federal</b>		Well No. <b>10</b>
Unit Letter <b>I</b>	Section <b>22</b>	Township <b>15 South</b>	Range <b>27 East</b>	County <b>Chaves</b>	
Actual Footage Location of Well: <b>1980</b> feet from the <b>South</b> line and <b>990</b> feet from the <b>East</b> line					
Ground Level Elev. <b>3495</b>	Producing Formation <b>Atoka</b>		Pool <b>Buffalo Valley Penn.</b>	Dedicated Acreage: <b>320</b> Acres	

1. Outline the acreage dedicated to the subject well by colored pencil or hachure marks on the plat below.
2. If more than one lease is dedicated to the well, outline each and identify the ownership thereof (both as to working interest and royalty).
3. If more than one lease of different ownership is dedicated to the well, have the interests of all owners been consolidated by communitization, unitization, force-pooling, etc?

☐ Yes ☐ No If answer is "yes," type of consolidation \_\_\_\_\_

If answer is "no," list the owners and tract descriptions which have actually been consolidated. (Use reverse side of this form if necessary.) \_\_\_\_\_

No allowable will be assigned to the well until all interests have been consolidated (by communitization, unitization, forced-pooling, or otherwise) or until a non-standard unit, eliminating such interests, has been approved by the Division.



CERTIFICATION

I hereby certify that the information contained herein is true and complete to the best of my knowledge and belief.

Name  
**George R. Smith**

Position  
**Agent for:**

Company  
**Read & Stevens, Inc.**

Date  
**March 1, 1988**

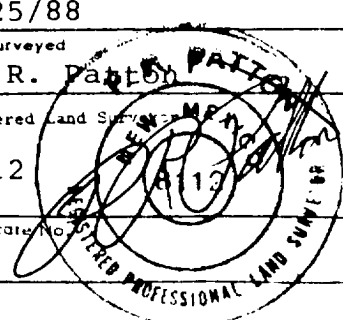
I hereby certify that the well location shown on this plat was plotted from field notes of actual surveys made by me or under my supervision, and that the same is true and correct to the best of my knowledge and belief.

**2/25/88**

Date Surveyed  
**P. R. Patton**

Registered Land Surveyor  
**8112**

Certificate No. **8112**



# BEK DRILLING CO., INC. - Fig 2 BLOWOUT PREVENTER SPECIFICATION

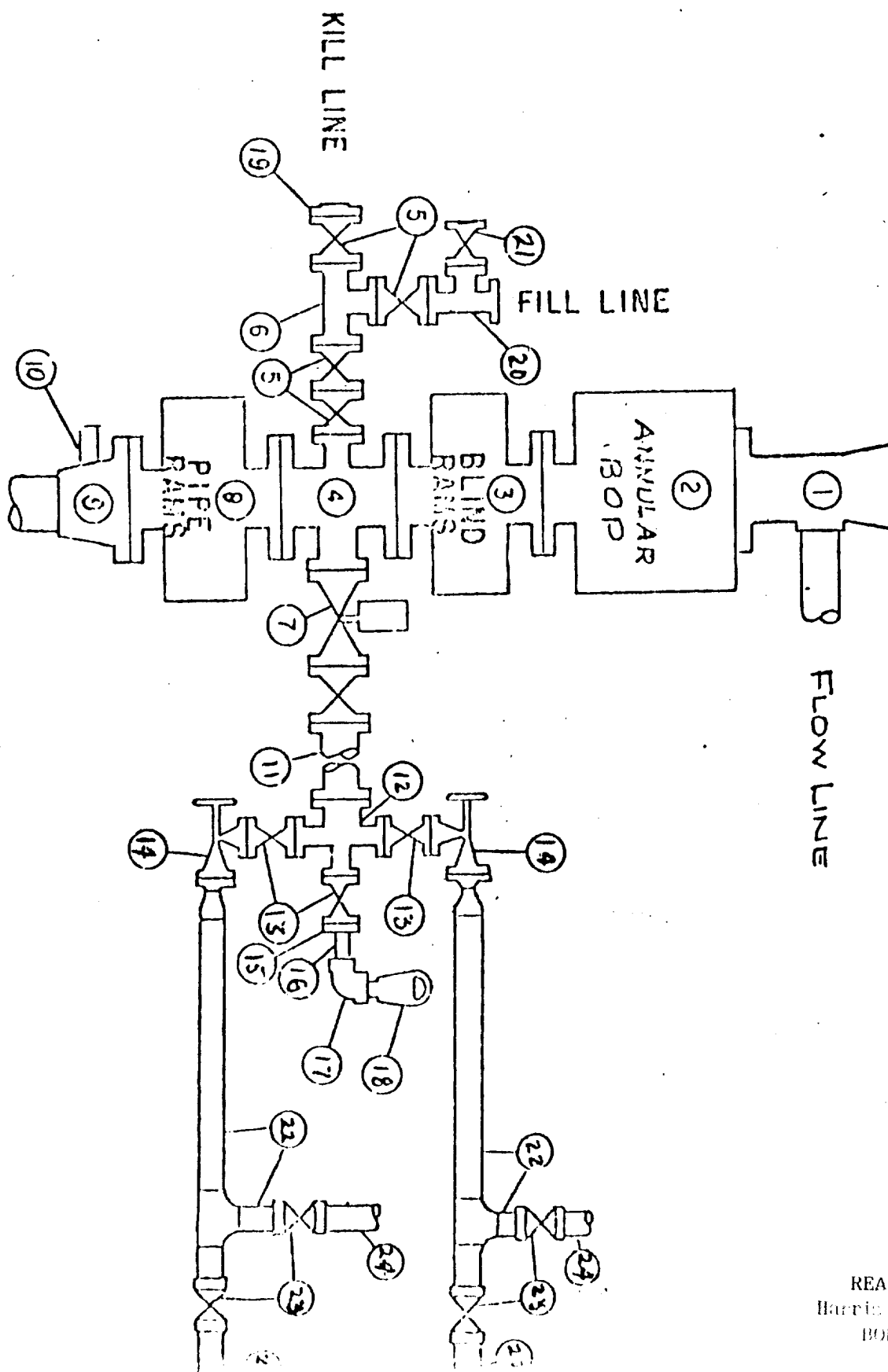


EXHIBIT "E"  
 READ & STEVENS, INC.  
 Harris Federal, W. L. No. 10  
 BOP Specifications

APPLICATION FOR DRILLING

READ & STEVENS, INC.  
HARRIS Federal, Well No. 10  
1980' FSL & 990' FEL, Sec. 22-T15S-R27E  
Chaves County, New Mexico  
Lease No.: NM-068043  
(Development Well)

In conjunction with Form 3160-3, Application for Permit to Drill subject well, Read & Stevens, Inc. submits the following items of pertinent information in accordance with BLM requirements:

1. The geologic surface formation is recent Permian with quaternary alluvium and other surficial deposits.
2. The estimated tops of geologic markers are as follows:

Queen	880'	Cisco	7000'
San Andres	1600'	Canyon	7430'
Glorieta	2640'	Strawn	7980'
Tubb	4310'	Atoka	8390'
Abo	5090'	Mississippi	8660'
Wolfcamp	6230'	Total Depth	9100'

3. The estimated depths at which water, oil or gas formations are anticipated to encountered:

Water: Surface water between 100' to 300'.

Oil: San Andres at approximately 1670'.

Gas: Atoka between 8400' and 8650'.

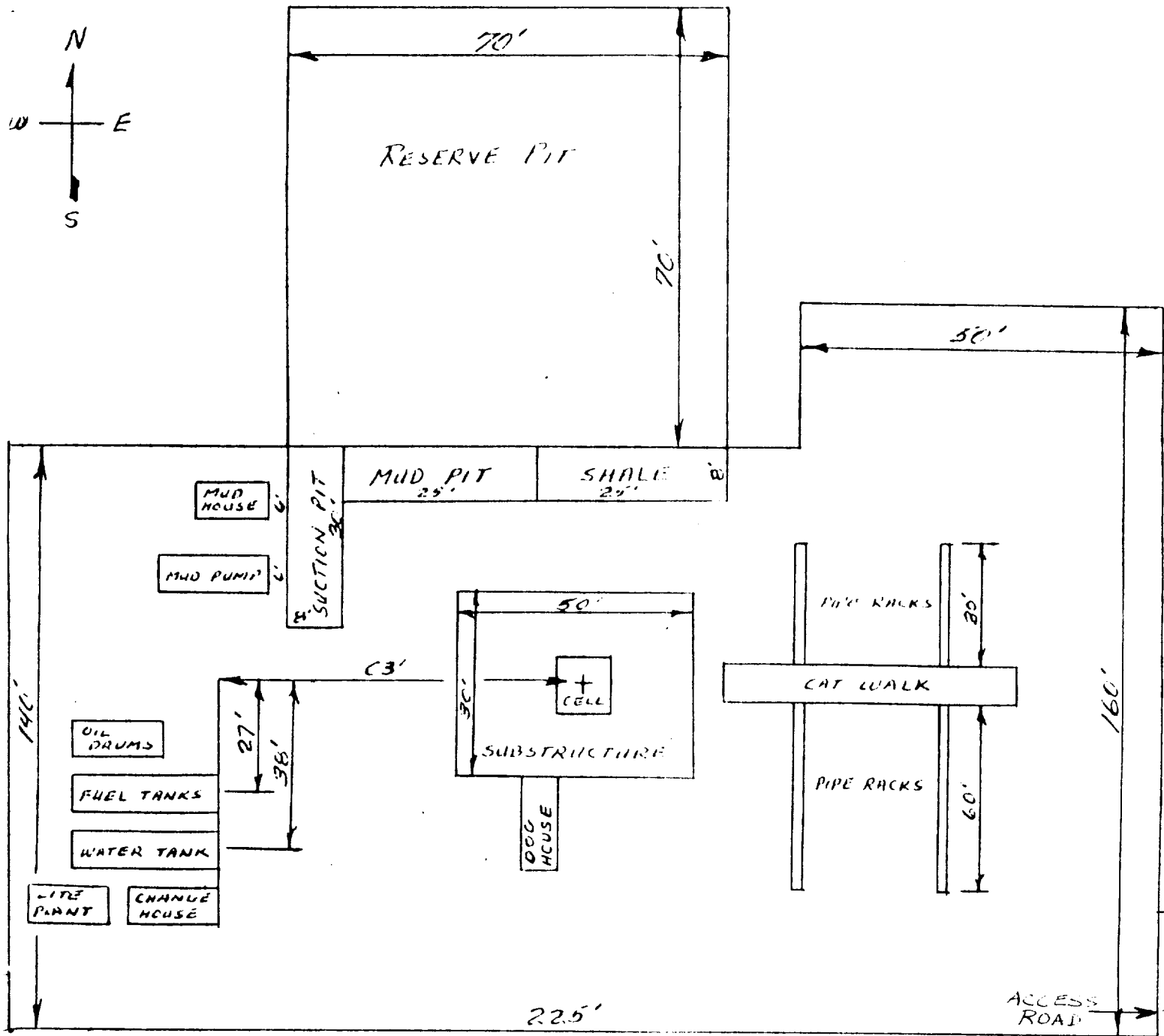
4. Proposed Casing Program: See Form 3160-3.
5. Pressure Control Equipment: See Form 3160-3 and Exhibit "E".
6. Mud Program: See Form 3160-3.
7. Auxiliary Equipment: Blowout preventer, gas detector, kelly cock, pit level monitor, flow sensors and stabbing valve.
8. Testing, Logging, and Coring Program:

Drill Stem Tests: As warranted.

Logging: From surface to T.D.: Gamma Ray/Neutron.  
From Int. Casing to T.D.: FDC/CNL-LDT-G/R, DLL-G/R w/RXO.

Coring: None planned.

9. No abnormal pressures or temperatures are anticipated. In the event abnormal pressures are encountered the proposed mud program will be modified.
10. Anticipated starting date: April 1, 1988.  
Anticipated completion of drilling operations: Approximately 35 days.



### CELLAR

THIS RIG IS EQUIPPED WITH SHAFER LWS SERIES 900 DOUBLE BOP HYDRAULIC OPERATED - WITH BLANKS 4" AND 4 1/4" WITH SIDE CONNECTIONS -

MAINTAIN 3' SPACING BETWEEN OIL DRUMS, FUEL TANKS, WATER TANK AND CHANGE HOUSE -

PUT CASING TOOLS ON NORTH SIDE OF RIG

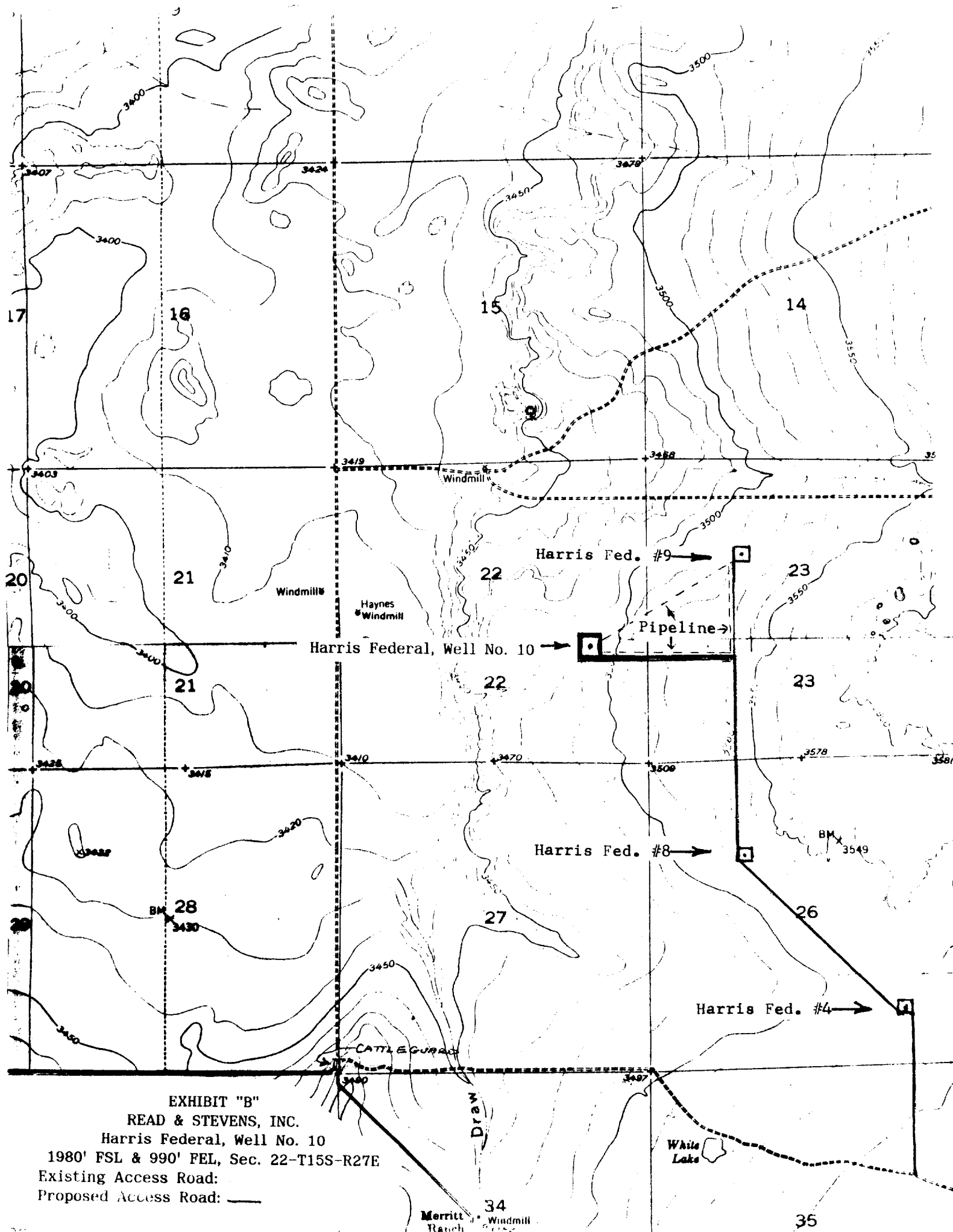


EXHIBIT "B"

READ & STEVENS, INC.

Harris Federal, Well No. 10

1980' FSL & 990' FEL, Sec. 22-T15S-R27E

Existing Access Road:

Proposed Access Road: —