

Form 3160-3
(November 1983)
(formerly 9-331C)

NM OIL COMS. COMMISSION
Drawer DD

Artesia, NM 88210

SUBMIT IN 1 LOCATE*
(Other instructions on
reverse side)

30-005-62658
Form approved.
Budget Bureau No. 1004-0136
Expires August 31, 1985

UNITED STATES
DEPARTMENT OF THE INTERIOR
BUREAU OF LAND MANAGEMENT

APPLICATION FOR PERMIT TO DRILL, DEEPEN, OR PLUG BACK

1a. TYPE OF WORK

DRILL ☒

DEEPEN ☐

PLUG BACK ☐

b. TYPE OF WELL

OIL
WELL ☒

GAS
WELL ☐

OTHER

SINGLE
ZONE ☐

MULTIPLE
ZONE ☐

2. NAME OF OPERATOR

McClellan Oil Corporation

RECEIVED

3. ADDRESS OF OPERATOR

P. O. Dr. 730 Roswell, NM 88202

4. LOCATION OF WELL (Report location clearly and in accordance with any State requirements)

At surface

1650' FNL & 660' FWL

At proposed prod. zone

same

14. DISTANCE IN MILES AND DIRECTION FROM NEAREST TOWN OR POST OFFICE*

15 miles north of Loco Hills, NM

15. DISTANCE FROM PROPOSED*

LOCATION TO NEAREST
PROPERTY OR LEASE LINE, FT.
(Also to nearest drlg. unit line, if any)

660'

16. NO. OF ACRES IN LEASE

240

17. NO. OF ACRES ASSIGNED
TO THIS WELL

40

18. DISTANCE FROM PROPOSED LOCATION*

TO NEAREST WELL, DRILLING, COMPLETED,
OR APPLIED FOR, ON THIS LEASE, FT.

990'

19. PROPOSED DEPTH

1900'

20. ROTARY OR CABLE TOOLS

Cable Tool

21. ELEVATIONS (Show whether DF, RT, GR, etc.)

3896' GL

22. APPROX. DATE WORK WILL START*

Dec. 15, 1988

23.

PROPOSED CASING AND CEMENTING PROGRAM

SIZE OF HOLE	SIZE OF CASING	WEIGHT PER FOOT	SETTING DEPTH	QUANTITY OF CEMENT
12 1/4"	8 5/8"	24#	300'	200 sx Cl. "C" circulate
7 7/8"	4 1/2"	10.5#	1900'	250 sx Cl. "C"

Propose to drill to 1900' to test the Queen formation. If commercial production is indicated, will run 4 1/2" casing and attempt completion.

Mud Program: None planned, since this is to be drilled with a cable tool rig.

BOP Program: A Shaffer Type 45 Mechanical Single Control Gate preventer will be used on the cable tool rig and will have a wp of 3000 psi.

IN ABOVE SPACE DESCRIBE PROPOSED PROGRAM: If proposal is to deepen or plug back, give data on present productive zone and proposed new productive zone. If proposal is to drill or deepen directionally, give pertinent data on subsurface locations and measured and true vertical depths. Give blowout preventer program, if any.

24.

Agent for:

SIGNED

Dee-Ann Smith

TITLE

McClellan Oil Corp.

DATE Nov. 8, 1988

(This space for Federal or State office use)

PERMIT NO.

APPROVAL DATE

APPROVED BY

S/Phil Kirk

TITLE

Area Manager

DATE DEC 5 1988

APPROVAL OF THIS APPLICATION DOES NOT WARRANT OR CERTIFY THAT THE APPLICANT HOLDS LEGAL OR EQUITABLE TITLE TO THOSE RIGHTS IN THE SUBJECT LEASE WHICH WOULD ENTITLE THE APPLICANT TO CONDUCT OPERATIONS THEREON

PLEASE BE ADVISED THAT THERE WILL BE NO EXCAVATION OF FEDERALLY OWNED MINERAL MATERIAL FOR CONSTRUCTION OF THE ACCESS ROAD OR PAD WITHOUT PAYMENT IN ADVANCE

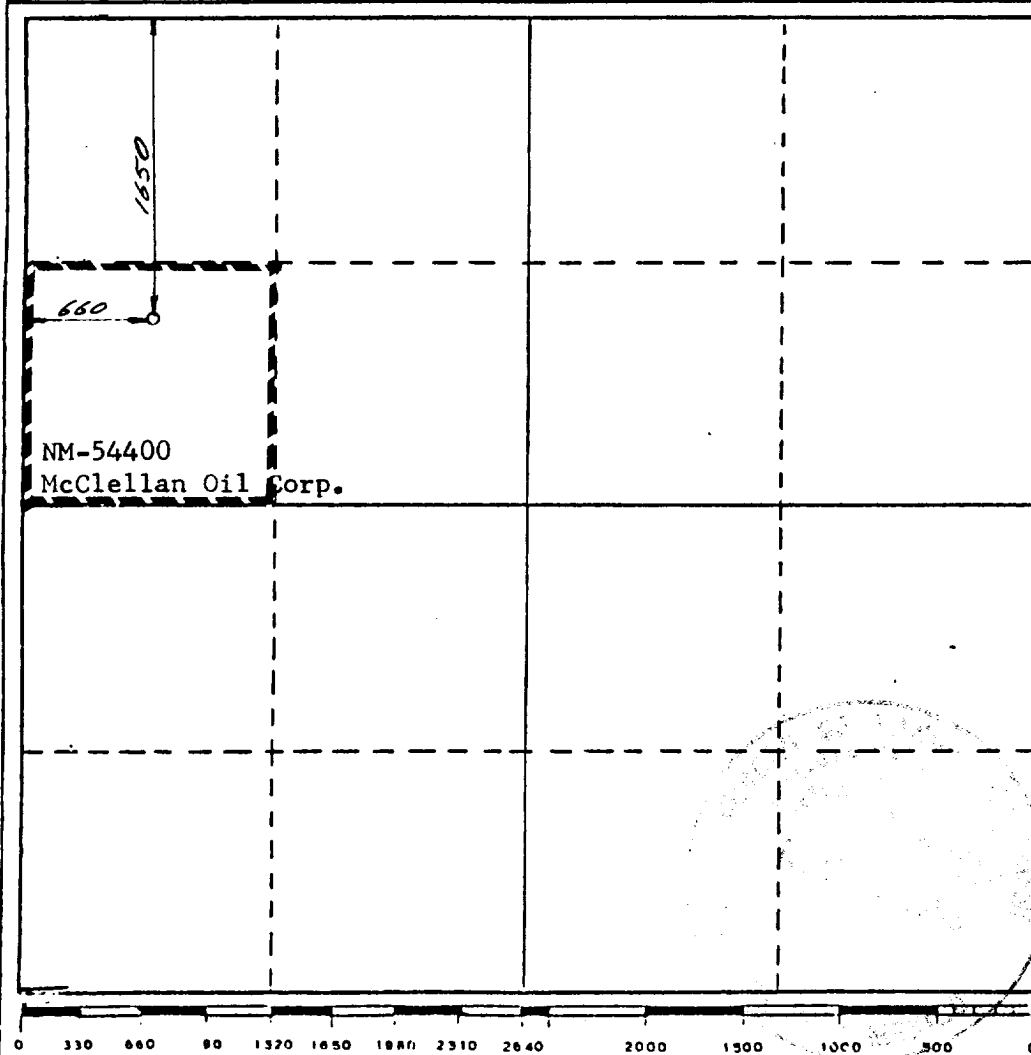
Title 18 U.S.C. Section 1001, makes it a crime for any person knowingly and willfully to make to any department or agency of the United States any false, fictitious or fraudulent statements or representations as to any matter within its jurisdiction.

OIL CONSERVATION DIVISION

STATE OF NEW MEXICO
ENERGY AND MINERALS DEPARTMENTP. O. BOX 2088
SANTA FE, NEW MEXICO 87501Form C-102
Revised 10-1-79

All distances must be from the outer boundaries of the Section.

Operator McClellan Oil Corporation		Lease Shell "15" Federal		Well No. 3
Unit Letter E	Section 15	Township 15 South	Range 29 East	County Chaves
Actual Footage Location of Well: 1650 feet from the North line and 660 feet from the West line				
Ground Level Elev. 3896	Producing Formation Queen	Pool UNP Lucky Lake Queen	Dedicated Acreage: 40 Acres	
<p>1. Outline the acreage dedicated to the subject well by colored pencil or hatchure marks on the plat below.</p> <p>2. If more than one lease is dedicated to the well, outline each and identify the ownership thereof (both as to working interest and royalty).</p> <p>3. If more than one lease of different ownership is dedicated to the well, have the interests of all owners been consolidated by communitization, unitization, force-pooling, etc?</p> <p><input type="checkbox"/> Yes <input type="checkbox"/> No If answer is "yes," type of consolidation _____</p> <p>If answer is "no," list the owners and tract descriptions which have actually been consolidated. (Use reverse side of this form if necessary.) _____</p> <p>No allowable will be assigned to the well until all interests have been consolidated (by communitization, unitization, forced-pooling, or otherwise) or until a non-standard unit, eliminating such interests, has been approved by the Division.</p>				



CERTIFICATION

I hereby certify that the information contained herein is true and complete to the best of my knowledge and belief.

George R. Smith

Name

George R. Smith

Position

Agent for:

Company

McClellan Oil Corp.

Date

Nov. 8, 1988

I hereby certify that the well location shown on this plat was plotted from field notes of actual surveys made by me or under my supervision, and that the same is true and correct to the best of my knowledge and belief.

1 November 1988

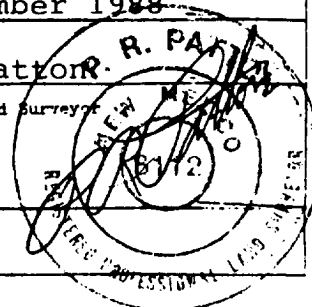
Date Surveyed

P.R. Patton

Registered Land Surveyor

8112

Certificate No.





SHAFFER TOOL WORKS



PREVENTERS

SHAFFER MECHANICAL CONTROL GATES

(Patented)

PARTS FOR TYPE 45 SINGLE GATES

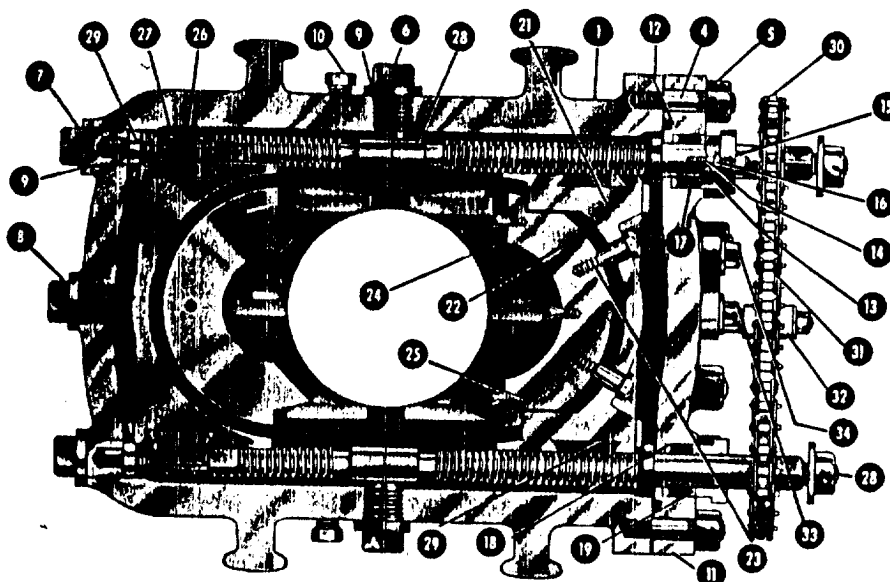


Fig. 84

Shaffer Type 45 Mechanical Single Control Gate—Top View

Part No.	No. Req'd.	NAME OF PART	Part No.	No. Req'd.	NAME OF PART	Part No.	No. Req'd.	NAME OF PART
1	1	Body	15	4	Stuffing Box Gland Stud Nut	26	8	Ram Clip
2	Varies	Body Flange Stud (Not Shown)	16	4	Stuffing Box Gland Jam Nut	27	16	Ram Clip Cap Screw
3	Varies	Body Flange Stud Nut (Not Shown)	17	2 Sets	Stuffing Box Packing (Chevron)	28	2	Operating Screw with Nut
4	Varies	Body End Cover Stud	18	2	Stuffing Box Bronze Packing Ring —Bottom	29	2 R.H. & 2 L.H.	Bronze Half Nut
5	Varies	Body End Cover Stud Nut	19	2	Stuffing Box Bronze Packing Ring —Top	30	2	Sprocket
6	2	Side Plug	20	2	Flange (Not Shown)	31	1	Sprocket Chain (length varies)
7	2	End Bearing Plug	21	1 Set	Ram Block Holder	32	1	Sprocket Chain Tightener
8	1	End Center Plug	22	1 Set	Ram Block (Pipe or Complete Shut-Off)	33	1	Screw with Ratchet Washer for Chain Tightener
9	5	Copper Gasket for Side and End Plug	23	4	Ram Block Retracting Screw	34	1	Screw with Plain Washer for Chain Tightener
10	2	Washout Plug	24	1 Set	Ram Rubber (Pipe or Complete Shut-Off)	35	1	Sprocket Chain Guard (Not Shown)
11	1	End Cover	25	Varies	Ram Rubber Retaining Screw	36	2	Cap Screw with Washer for Chain Guard (Not Shown)
12	1	Hydraulic Packing for End Cover (Earlier Gates use Metal Gasket)						
13	2	Stuffing Box Gland						
14	4	Stuffing Box Gland Stud						

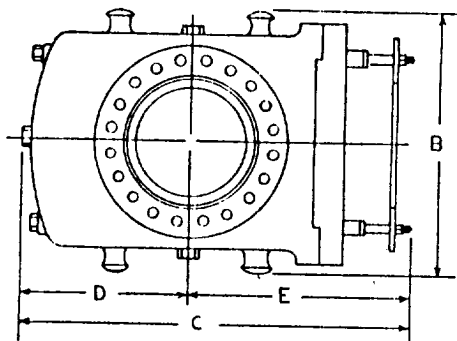


Fig. 85

Dimensional Plan—Shaffer Type 45 Mechanical Single Control Gate

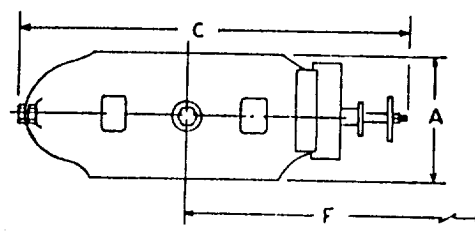


Fig. 86

Dimensional Elevation—Shaffer Type 45 Mechanical Single Control Gate

DIMENSIONAL AND ENGINEERING DATA ON SHAFFER TYPE 45 MECHANICAL SINGLE CONTROL GATES

Size	Max. Service Pressure Rating, psi	Test Pressure, psi	Vertical Bore	Approx. Weight, Pounds	Ram Size	A Height	B Width	C Length	D Center To Rear	E Center To Front	F Max. Distance Needed To Change Rams
6"	3,000	6,000	7 1/4"	1,500	C.S.O. Thru 5" O.D.	14"	27 1/2"	34"	13 1/2"	20 1/2"	41 1/2"
8"	3,000	6,000	9"	2,050	C.S.O. Thru 7" O.D.	15 1/4"	29 1/2"	40"	16 1/4"	23 1/4"	49 1/2"
10"	3,000	6,000	11"	2,580	C.S.O. Thru 8 1/2" O.D.	16 1/4"					
12"	3,000	6,000	12 1/4"	3,345	C.S.O. Thru 10 1/2" O.D.	17 1/4"					
16"	2,000	3,000	16 1/4"	4,200	C.S.O. Thru 13 1/2" O.D.	17"					

EXHIBIT "E"

McCLELLAN OIL CORPORATION
Shell 15 Federal, Well No. 3
BOP Specification

APPLICATION FOR DRILLING

McCLELLAN OIL CORPORATION
SHELL 15 FEDERAL, Well No. 3
1650' FNL & 660' FWL, Sec. 15-T15S-R29E
Chaves County, New Mexico
Lease No.: NM-54400
(Development Well)

In conjunction with Form 3160-3, Application for Permit to Drill subject well, McClellan Oil Corporation submits the following items of pertinent information in accordance with BLM requirements:

1. The geologic surface formation is recent Permian with quaternary alluvium and other surficial deposits.
2. The estimated tops of geologic markers are as follows:

Salt	350'	Queen	1830'
Yates	1100'	T.D.	1900'
7-Rivers	1640'		
3. The estimated depth at which anticipated water, oil or gas formations are expected to encountered:

Water: Random fresh water sands from surface to 300'+/-.

Gas: None expected.

Oil: Possible in Queen at or below 1830'.
4. Proposed Casing Program: See Form 3160-3.
5. Pressure Control Equipment: See Form 3160-3 and Exhibit "E".
6. Mud Program: None planned, well to be drilled with cable tool rig.
7. Auxiliary Equipment: Blowout preventer, and 10" Grant 3000 psi rotating head.
8. Testing, Logging and Coring Program:

Drill Stem Tests: None planned.

Logging: CNL-LDT and DILL from surface casing to TD.

Coring: None.
9. No abnormal pressures or temperatures are anticipated. In the event abnormal pressures are encountered the drilling mud will be modified to increase the mud weight.
10. Anticipated starting date of: December 15, 1988
Anticipated completion of drilling operations: 14 days.

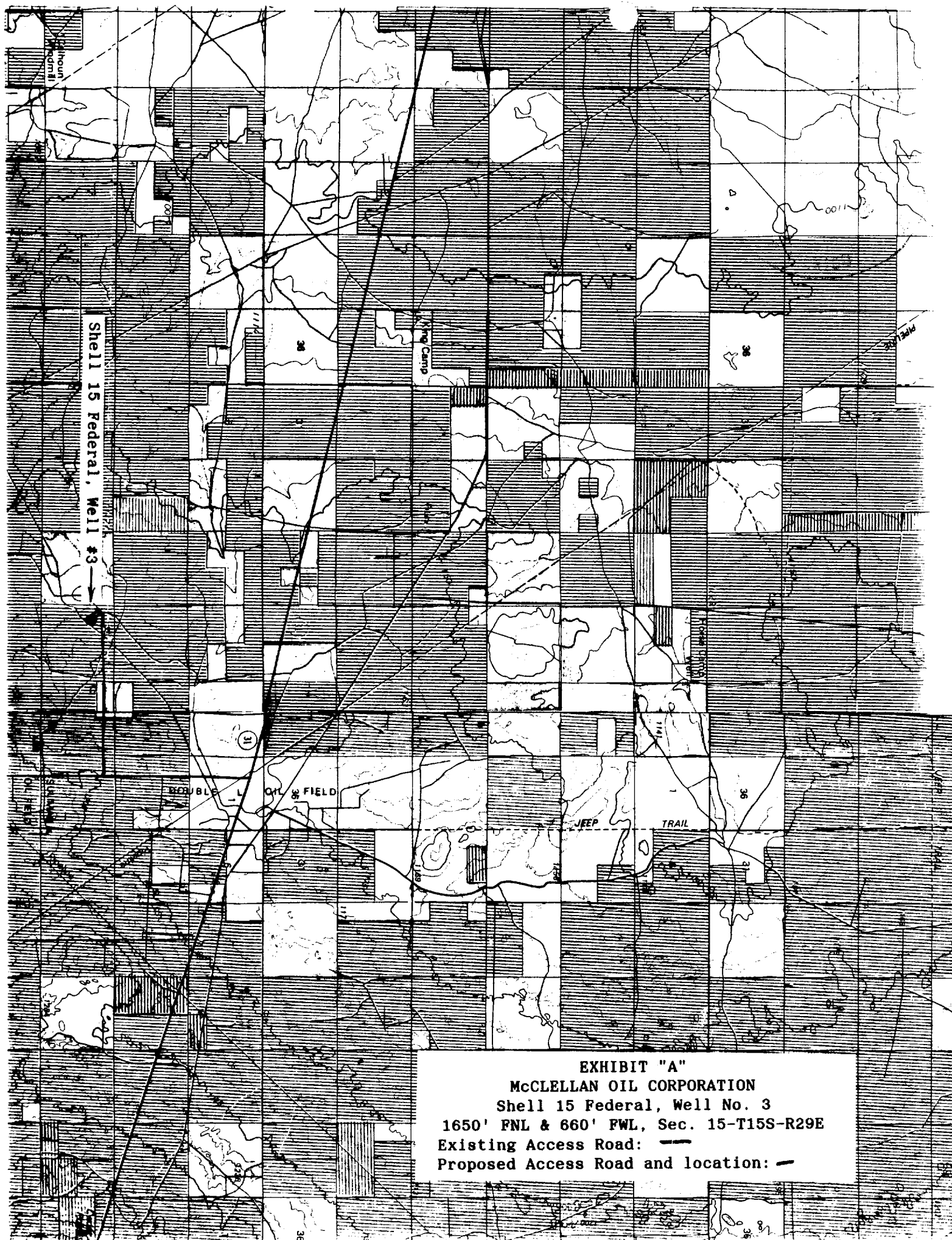


EXHIBIT "A"
McCLELLAN OIL CORPORATION
Shell 15 Federal, Well No. 3
1650' FNL & 660' FWL, Sec. 15-T15S-R29E
Existing Access Road: ———
Proposed Access Road and location: —

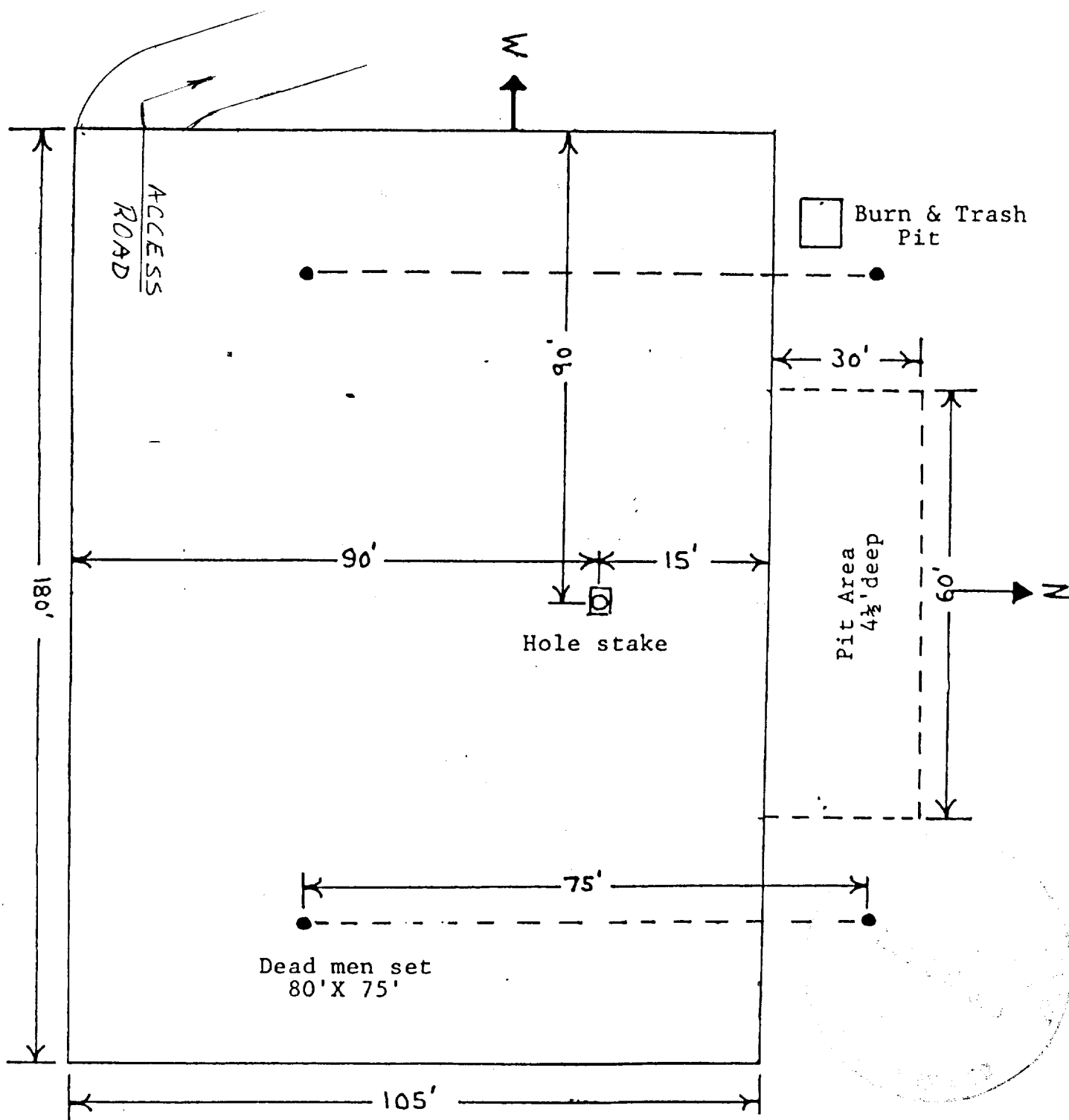


EXHIBIT "D"

McCLELLAN OIL CORPORATION

CABLE TOOL LOCATION PLAT Shell 15 Federal, Well No. 3

Rig Layout