

OIL CONSERVATION DIVISION

P.O. Box 2088

Santa Fe, New Mexico 87504-2088

DISTRICT I
 P.O. Box 1980, Hobbs, NM 88240

DISTRICT II
 P.O. Drawer DD, Artesia, NM 88210

DISTRICT III
 1000 Rio Brazos Rd., Aztec, NM 87410

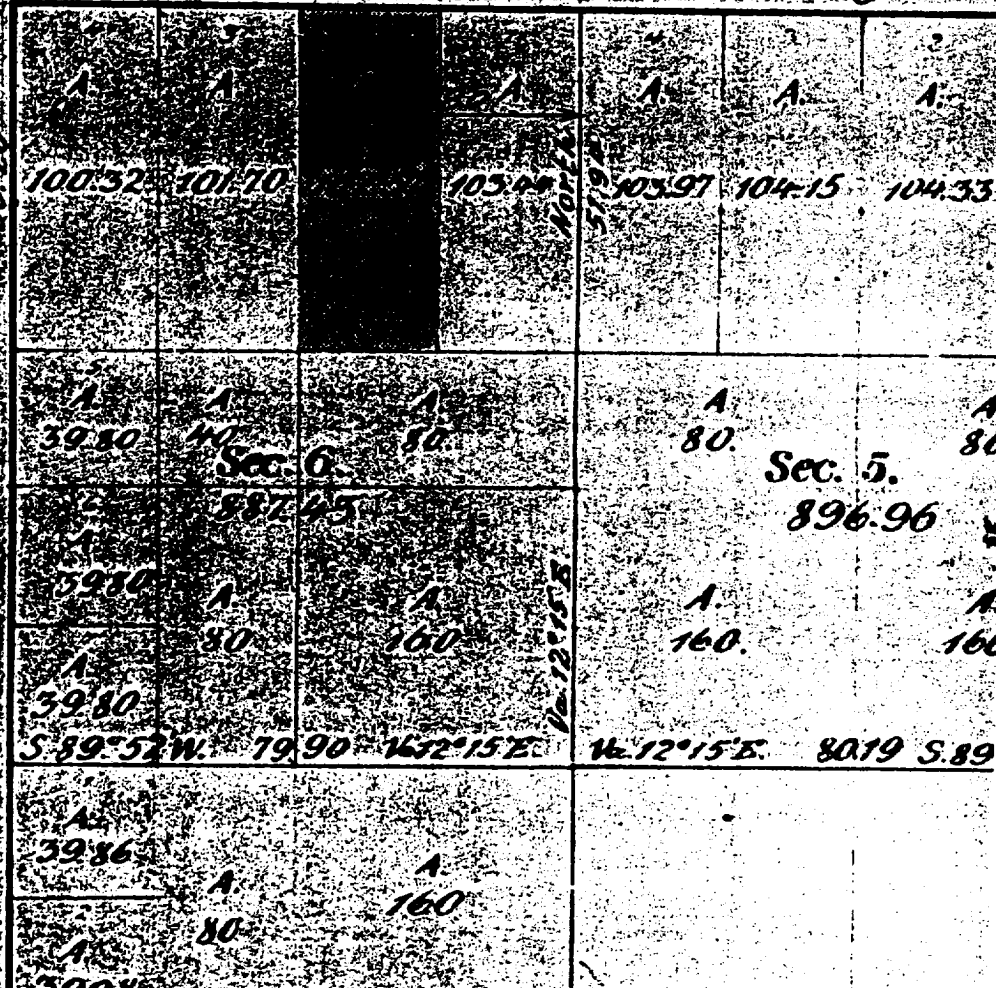
WELL LOCATION AND ACREAGE DEDICATION PLAT

All Distances must be from the outer boundaries of the section

Operator J. Cleo Thompson			Lease State "A-6"		Well No. 1
Unit Letter B	Section 6	Township 16 South	Range 17 East	County Chaves	
Actual Footage Location of Well: 950 feet from the North line and 2180 feet from the East line Ground level Elev. 5985 Producing Formation Devonian Pool Wildcat Dedicated Acreage: 102.57 Acres 40					

- Outline the acreage dedicated to the subject well by colored pencil or hatchure marks on the plat below.
- If more than one lease is dedicated to the well, outline each and identify the ownership thereof (both as to working interest and royalty).
- If more than one lease of different ownership is dedicated to the well, have the interest of all owners been consolidated by communization, unitization, force-pooling, etc?
☐ Yes ☐ No If answer is "yes" type of consolidation _____
 If answer is "no" list the owners and tract descriptions which have actually been consolidated. (Use reverse side of this form if necessary).
 No allowable will be assigned to the well until all interests have been consolidated (by communization, unitization, forced-pooling, or otherwise) or until a non-standard unit, eliminating such interest, has been approved by the Division.

Township No 16 SOUTH



OPERATOR CERTIFICATION

I hereby certify that the information contained herein is true and complete to the best of my knowledge and belief.

Signature *B.M. Breining*
 Printed Name **B.M. Breining**
 Position **Supt.**
 Company **J. CLEO THOMPSON**
 Date **Sept. 9, 1993**

SURVEYOR CERTIFICATION

I hereby certify that the well location shown on this plat was plotted from field notes of actual surveys made by me or under my supervision, and that the same is true and correct to the best of my knowledge and belief.

Date Surveyed **August 25, 1993**
 Signature & Seal *P.R. Patton*
 Professional Surveyor
 P.R. Patton
 Certificate No. **8112**