

District I
PO Box 1980, Hobbs, NM 88241-1980
District II
PO Drawer DD, Artesia, NM 88211-0719
District III
1000 Rio Brazos Rd., Aztec, NM 87410
District IV
PO Box 2088, Santa Fe, NM 87504-2088

Well File
State of New Mexico
Energy, Minerals & Natural Resources Department

OIL CONSERVATION DIVISION
PO Box 2088
Santa Fe, NM 87504-2088

Form C-101

Revised February 10, 1994

Instructions on back

Submit to Appropriate District Office

State Lease - 6 Copies

Fee Lease - 5 Copies

AMENDED REPORT

APPLICATION FOR PERMIT TO DRILL, RE-ENTER, DEEPEN, PLUGBACK, OR ADD A ZONE

Operator Name and Address. Ocean Energy, Inc. 4305 N. Garfield, Suite 200A Midland, TX 79705		OGRID Number 169355
		API Number 30-005-63257
Property Code 25897	Property Name Mesa State Com "31" State Com	Well No. 2

Surface Location

UL or lot no.	Section	Township	Range	Lot Idn	Feet from the	North/South line	Feet from the	East/West line	County
1	31	15S	28E		990	North	990	East	Chaves

Proposed Bottom Hole Location If Different From Surface

UL or lot no.	Section	Township	Range	Lot Idn	Feet from the	North/South line	Feet from the	East/West line	County
Proposed Pool 1 Diamond Mound Morrow					Proposed Pool 2 Wildcat Atoka				

Work Type Code N	Well Type Code G	Cable/Rotary R	Lease Type Code S	Ground Level Elevation 3608
Multiple No	Proposed Depth 9250	Formation Morrow	Contractor Unknown	Spud Date 6-1-00

Minimum WOC time 18 hrs. Proposed Casing and Cement Program

Hole Size	Casing Size	Casing weight/feet	Setting Depth	Secks of Cement	Estimated TOC
17 1/2"	13 3/8	48	500'	400	Surface
11"	8 5/8	32	2000'	600	Surface
7 7/8"	4 1/2	135	9250'	500	7500'
Cement to cover all oil, gas & water bearing zones					Bob

Describe the proposed program. If this application is to DEEPEN or PLUG BACK give the data on the present productive zone and proposed new productive zone. Describe the blowout prevention program, if any. Use additional sheets if necessary.

1. Set 40' of 20" conductor pipe and cement to surface with Redi-mix.
2. Drill 17 1/2" hole to 500', run 13 3/8 H-40, 48# ST&C casing & cement w/ 400 sx cement, circulate to surface.
3. Drill 11" hole to 2000', run 8-5/8 32# K-55 STC and circulate w/ 600 sx.
4. Drill 7 7/8" hole to 9250', if well logs indicate economic production, run 4 1/2" 13.5# N-80 LT&C. Cement with 500 sx cement, circulate to 7500'.

Permit Expires 1 Year From Approval
Date Unless Drilling Underway

I hereby certify that the information given above is true and complete to the best of my knowledge and belief.

Signature: Janice Holley
Printed name: Janice Holley

Title: Production Analyst

Date: 5-15-00

Phone: 915-683-3003

OIL CONSERVATION DIVISION

Approved by: Jim W. Green BGA

Title: District Supervisor

Approval Date: 6-29-00 Expiration Date: JUN 29 2001

Conditions of Approval:
Attached ☐

Record Only - Federal Well

4
JUL 2000
Received
Halls
den

P. O. Box 1980
Hobbs, NM 88241-1980

DISTRICT II

P. O. Drawer 00
Artesia, NM 88211-0719

DISTRICT III

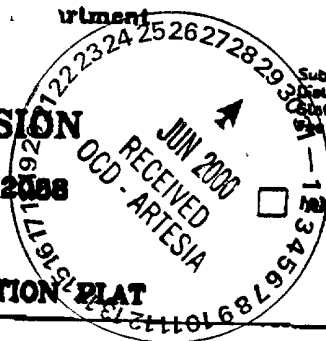
1000 Rio Brazos Rd.
Aztec, NM 87410

DISTRICT IV

P. O. Box 2088
Santa Fe, NM 87507-2088

State of New Mexico
Geology, Minerals, and Natural Resources Department

OIL CONSERVATION DIVISION
P. O. Box 2088
Santa Fe, New Mexico 87504-2088



Form C-102
Revised 02-10-94
Instructions on back

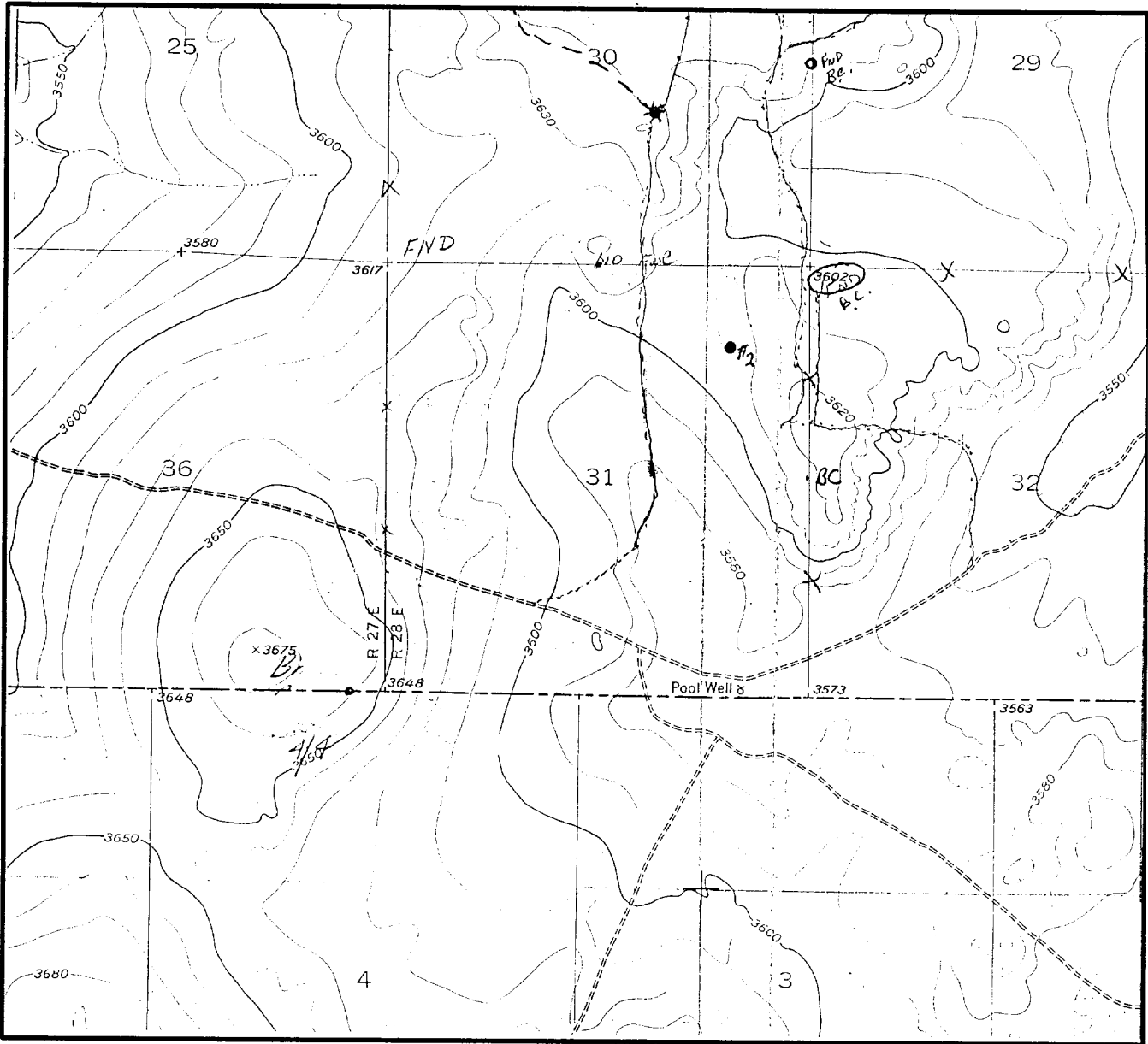
Submit to the Appropriate District Office
State Lease - 4 copies
Well Lease - 3 copies

☐ EXTENDED REPORT

WELL LOCATION AND ACREAGE DEDICATION PLAT

1 API Number		2 Pool Code		3 Pool Name					
4 Property Code		5 Property Name MESA STATE CDM '31'				6 Well Number 2			
7 OGRID No.		8 Operator Name OCEAN ENERGY				9 Elevation 3608'			
" SURFACE LOCATION									
UL or lot no. A	Section 31	Township 15 SOUTH	Range 28 EAST, N.M.P.M.	Lot 14s	Feet from the 990'	North/South line NORTH	Feet from the 990'	East/West line EAST	County CHAVES
" BOTTOM HOLE LOCATION IF DIFFERENT FROM SURFACE									
UL or lot no.	Section	Township	Range	Lot 14s	Feet from the	North/South line	Feet from the	East/West line	County
10 Dedicated Acres		11 Joint or Infill		12 Consolidation Code		13 Order No.			
NO ALLOWABLE WELL BE ASSIGNED TO THIS COMPLETION UNTIL ALL INTERESTS HAVE BEEN CONSOLIDATED OR A NON-STANDARD UNIT HAS BEEN APPROVED BY THE DIVISION									
						OPERATOR CERTIFICATION I hereby certify that the information contained herein is true and complete to the best of my knowledge and belief. Signature: <i>Janice Holley</i> Printed Name: <i>Janice Holley</i> Title: <i>Production Analyst</i> Date: <i>6-27-00</i>			
						SURVEYOR CERTIFICATION I hereby certify that the well location shown on this plat was plotted from field notes of actual surveys made by me or under my supervision, and that the same is true and correct to the best of my belief. Date of Survey: <i>6-27-00</i> Signature: <i>V. Lynn Bezner</i> Printed Name: <i>V. LYNN BEZNER</i> Title: <i>Professional Surveyor</i> No. <i>7920</i>			
						Date of Survey: <i>6-27-00</i>			
						Signature: <i>V. Lynn Bezner</i> Printed Name: <i>V. LYNN BEZNER</i> Title: <i>Professional Surveyor</i> No. <i>7920</i>			
JOB #68472 / 99 NW / V.H.B.									

LOCATION & ELEVATION VERIFICATION MAP



SCALE : 1" = 2000'

CONTOUR INTERVAL 10 FEET

SECTION 31 TWP T-15-S RGE R-28-E
SURVEY NEW MEXICO PRINCIPAL MERIDIAN
COUNTY CHAVES STATE NM
DESCRIPTION 990' FNL & 990' FEL
ELEVATION 3608'

OPERATOR OCEAN ENERGY
LEASE MESA STATE COM "31" #2

U.S.G.S. TOPOGRAPHIC MAP
DIAMOND MOUND, NEW MEXICO

LAT. N = 32°58'37"
LONG. W = 104°09'57"



This location has been very carefully staked on the ground according to the best official survey records, maps, and other data available to us.
Review this plot and notify us immediately of any possible discrepancy.

TOPOGRAPHIC LAND SURVEYORS

Surveying & Mapping for the Oil & Gas Industry

1307 N. HOBART
PAMPA, TX. 79065
(800) 658-6382

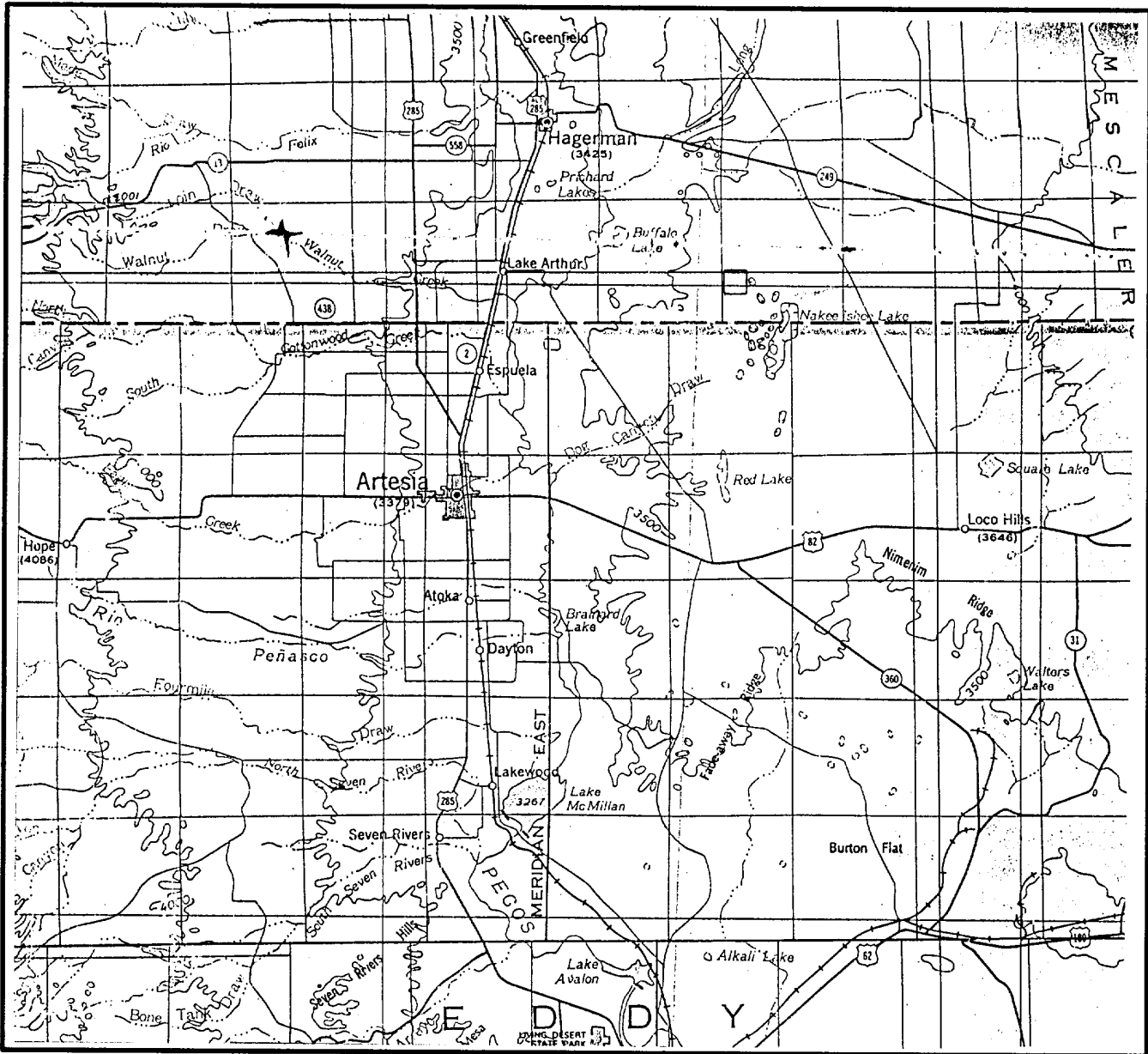
6709 N. CLASSEN BLVD.
OKLAHOMA CITY, OK. 73116
(800) 654-3219

2903 N. BIG SPRING
MIDLAND, TX. 79705
(800) 767-1653



2
MAY 2000
Received
Hobbs
OGD

VICINITY MAP



SECTION 31 TWP T-15-S RGE R-28-E
 SURVEY NEW MEXICO PRINCIPAL MERIDIAN
 COUNTY CHAVES STATE NM
 DESCRIPTION 990' FNL & 990' FEL

OPERATOR OCEAN ENERGY
 LEASE MESA STATE COM "31" #2

DISTANCE & DIRECTION FROM LAKE ARTHUR S.H. 2 & NM
507, GO NORTHEASTERLY ±3.6 MILES TO RATCAMP RD.,
THENCE EAST 4.5 MILES ON RATCAMP RD., THENCE SOUTH-
EASTERLY 3.5 MILES ON LEASE RD., THENCE NORTHERLY
0.7 MILE ON LEASE RD. TO A POINT ±1100' WEST OF
LOCATION.

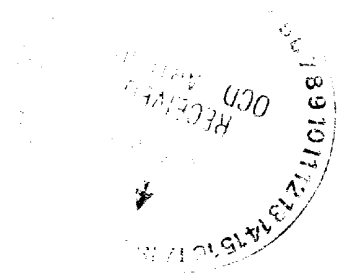
This location has been very carefully staked on the ground according to the best official survey records, maps, and other data available to us.
 Review this plot and notify us immediately of any possible discrepancy.

TOPOGRAPHIC LAND SURVEYORS
Surveying & Mapping for the Oil & Gas Industry

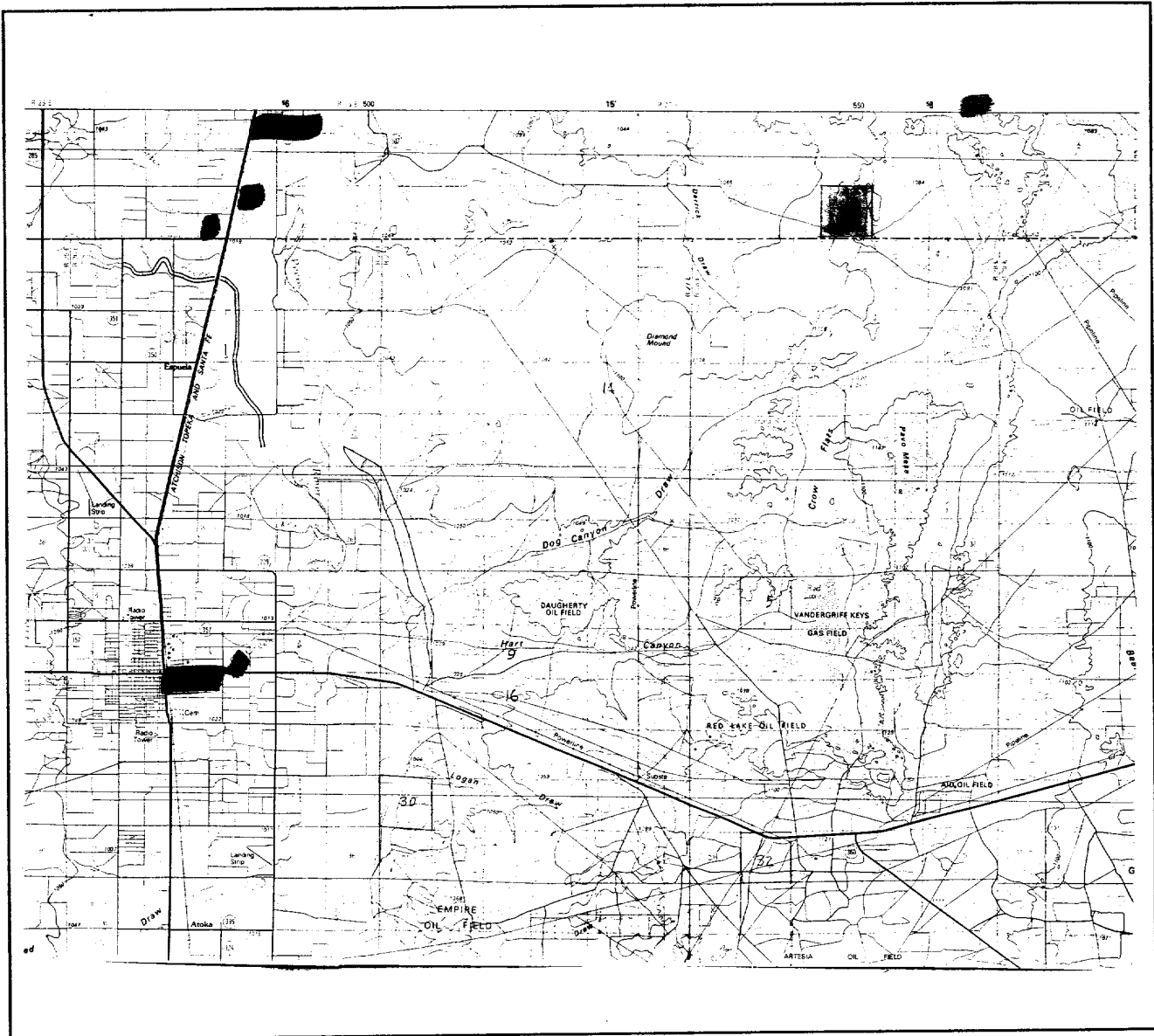
1307 N. HOBART
 PAMPA, TX. 79065
 (800) 658-6382



6709 N. CLASSEN BLVD.
 OKLAHOMA CITY, OK. 73116
 (800) 654-3219

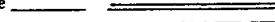

2903 N. BIG SPRING
 MIDLAND, TX. 79705
 (800) 767-1653



VICINITY MAP



Primary highway, hard surface 
Secondary highway, hard surface 

Light duty road, principal street, hard or improved surface 
Other road or street, trail 

Description Sec 31, T15S, R28E
Chaves County, NM

Operator OCEAN ENERGY CORP

Lease Name & Well No. _____

Remarks: _____

16 mi NE of Artesia

Scale in Miles:



This location has been very carefully staked on the ground according to the best official survey records, maps, and other data available to us.

Review this plat and notify us immediately of any possible discrepancy.

TOPOGRAPHIC LAND SURVEYORS

(915) 682-1653 / (800) 767-1653

2903 N. Big Spring Street

Midland, TX 79705

CHAVES CO
EDDY CO

31

TOPOGRAPHIC

JOHN E. BROWN & COMPANY, INC.

Topographic Land Surveyors
2903 North Big Spring
Midland, TX 79705
(915) 682-1653

Company: _____
County: _____
Area: _____
Scale: _____
Photo Date: _____

ILLEGIBLE

JUN 26 '00 10:56AM OCEAN LAND

P.2/2

**DESIGNATION OF AGENCY TO SECURE DRILLING PERMIT
AND INDEMNIFICATION AGREEMENT**

Ocean Energy Resources, Inc., has proposed the drilling of the Mesa State Com "31" #2 well located 990' FNL and 990' FEL - Section 31 - 15S-29E in Eddy County, New Mexico ("well"). Central Resources, Inc., will not be participating in the drilling of this well pursuant to its contractual non-consent election. Thus, Central Resources, Inc., as the current operator of the property and spacing unit in which the well is located, hereby agrees and authorizes Ocean Energy Resources, Inc. to act as its agent for purposes of securing the drilling permit for the above described well.

Ocean Energy Resources, Inc. indemnifies and holds Central Resources, Inc. harmless from any costs, claims or demands of any nature and any kind whatsoever arising out of, or incidental to, Ocean Energy Resources, Inc.'s operations conducted in connection with the drilling and completing, or plugging of the well as set forth in the applicable Operating Agreement dated March 31, 1980, between Ocean Energy Resources, Inc. and Central Resources, Inc.

This letter agreement may be executed in counterpart.

AGREED TO AND ACCEPTED
this 26th day of June 2000.

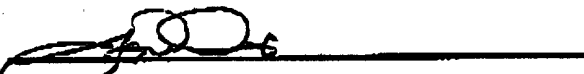
OCEAN ENERGY RESOURCES, INC.



By: Hank Wood

Title: Attorney-in-Fact

CENTRAL RESOURCES, INC.



By: Gary D. Davis

Title: Vice President, Engineering & Exploitation

