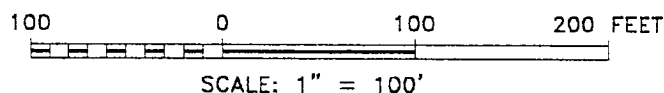
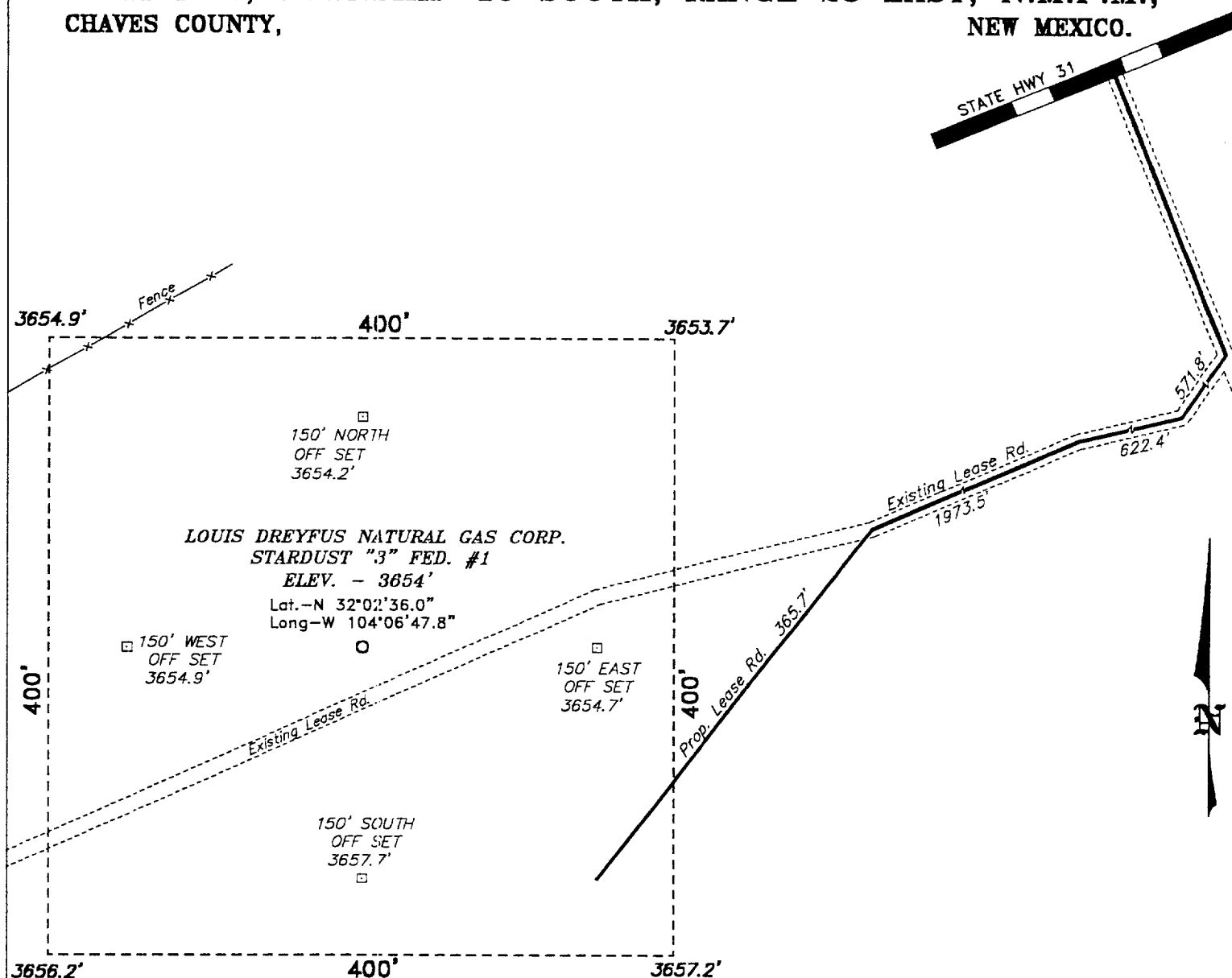


SECTION 3, TOWNSHIP 15 SOUTH, RANGE 28 EAST, N.M.P.M.,
CHAVES COUNTY, NEW MEXICO.



Directions to Location:

FROM THE JUNCTION OF US HWY 285 AND CO. RD.
31 IN HAGERMAN, GO EAST ON C-31 FOR APPROX.
13 MILES TO A LEASE ROAD; THENCE SOUTHERLY ON
LEASE ROAD FOR APPROX. 2.1 MILES; THENCE WEST
ON LEASE ROAD 0.6 MILE TO A POINT ON THE WELL
PAD.

Louis Dreyfus Natural Gas Corp.

REF: STARDUST "3" FED. #1 / Well Pad Topo

THE STARDUST "3" FED. No. 1 LOCATED 1980' FROM
THE SOUTH LINE AND 660' FROM THE EAST LINE OF
SECTION 3, TOWNSHIP 15 SOUTH, RANGE 28 EAST,
N.M.P.M., CHAVES COUNTY, NEW MEXICO.

Basin Surveys P.O. BOX 1786-HOBBS, NEW MEXICO

W.O. Number: 2003

Drawn By: K. GOAD

Date: 11-05-2001

Disk: KJG CD#4 - 2003A.DWG

Survey Date: 10-31-2001

Sheet 1 of 1 Sheets