

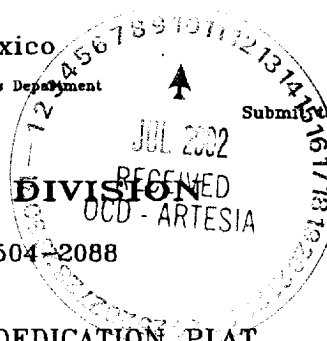
Condition of Approval:

DISTRICT I
1625 N. French Dr., Hobbs, NM 88240
DISTRICT II
811 South First, Artesia, NM 88210
DISTRICT III
1000 Rio Brazos Rd., Aztec, NM 87410
DISTRICT IV
2040 South Pacheco, Santa Fe, NM 87505

State of New Mexico
Energy, Minerals and Natural Resources Department

Form C-102
Revised March 17, 1999
Submitted to Appropriate District Office
State Lease - 4 Copies
Fee Lease - 3 Copies

OIL CONSERVATION DIVISION
2040 South Pacheco
Santa Fe, New Mexico 87504-2088



☐ AMENDED REPORT

WELL LOCATION AND ACREAGE DEDICATION PLAT

API Number	Pool Code	Pool Name
		Chaves (Morrow)
Property Code	Property Name	Well Number
	STARDUST "2" STATE	1
OGRID No.	Operator Name	Elevation
025773	DOMINION OKLAHOMA TEXAS E&P INC.	3646'

Surface Location

UL or lot No.	Section	Township	Range	Lot Idn	Feet from the	North/South line	Feet from the	East/West line	County
M	2	15 S	28 E		660	SOUTH	660	WEST	CHAVES

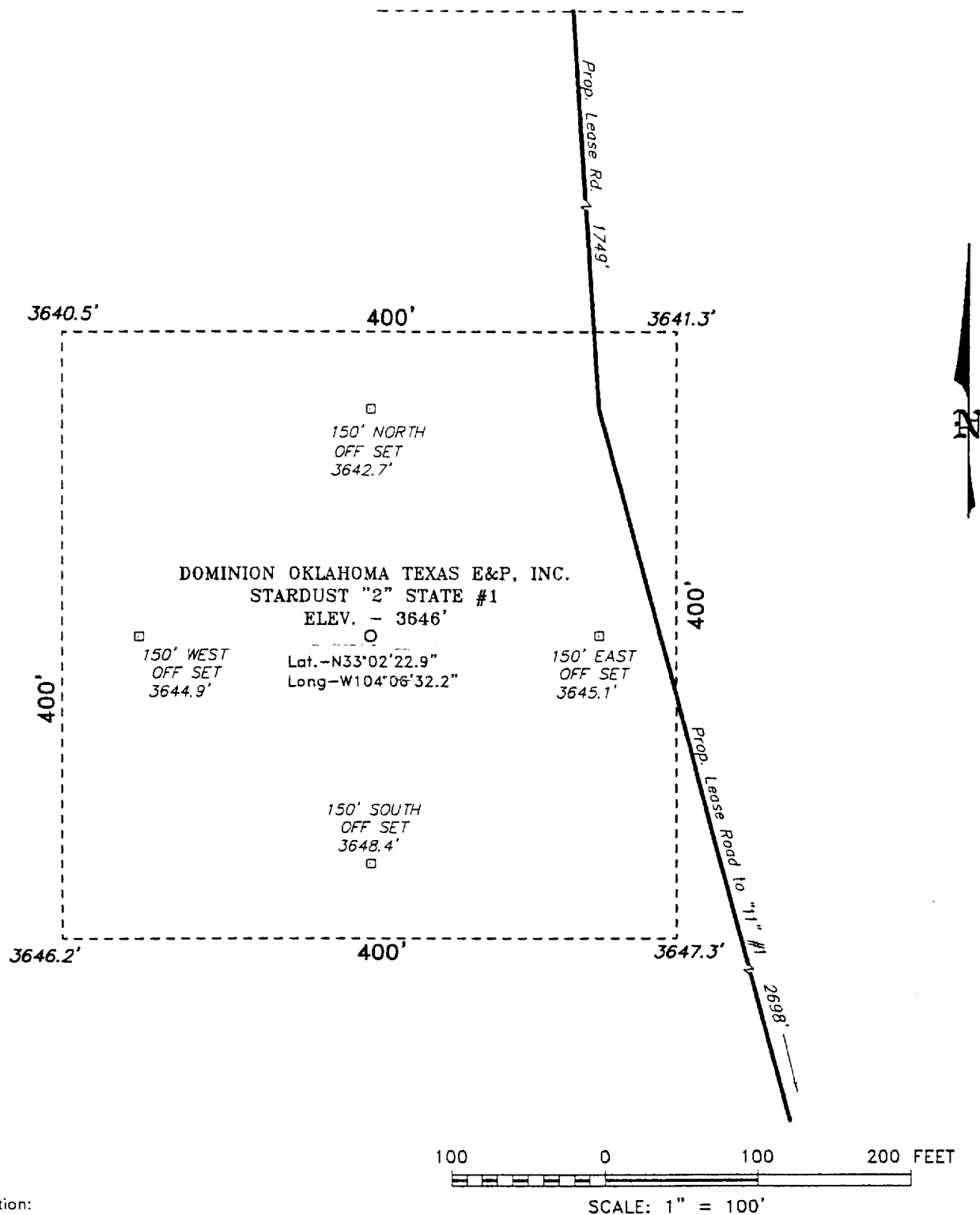
Bottom Hole Location If Different From Surface

UL or lot No.	Section	Township	Range	Lot Idn	Feet from the	North/South line	Feet from the	East/West line	County
Dedicated Acres	Joint or Infill	Consolidation Code	Order No.						
320	N								

NO ALLOWABLE WILL BE ASSIGNED TO THIS COMPLETION UNTIL ALL INTERESTS HAVE BEEN CONSOLIDATED
OR A NON-STANDARD UNIT HAS BEEN APPROVED BY THE DIVISION

				OPERATOR CERTIFICATION I hereby certify the the information contained herein is true and complete to the best of my knowledge and belief. <u>Carla Christian</u> Signature Carla Christian Printed Name Regulatory Specialist Title June 18, 2002 Date	
				SURVEYOR CERTIFICATION I hereby certify that the well location shown on this plat was plotted from field notes of actual surveys made by me or under my supervision and that the same is true and correct to the best of my belief. Date Surveyed <u>MAY 24, 2002</u> Signature & Seal of Professional Surveyor <u>[Signature]</u> Certificate No. <u>7977</u> Professional Surveyor <u>GOV. L. JONES 7977</u> BASIN SURVEYS	

SECTION 2, TOWNSHIP 15 SOUTH, RANGE 28 EAST, N.M.P.M.,
EDDY COUNTY, NEW MEXICO.



Directions to Location:

FROM THE JUNCTION OF US HWY 285 AND CO. RD. C31 IN HAGERMAN, GO EAST APPROX. 13 MILES TO A LEASE ROAD; THENCE SOUTHEAST ON LEASE ROAD FOR APPROX. 2 MILES; THENCE SOUTHWESTERLY ON LEASE ROAD FOR APPROX. 0.4 MILE TO A PROPOSED LEASE ROAD.

DOMINION OKLAHOMA TEXAS E&P, INC.

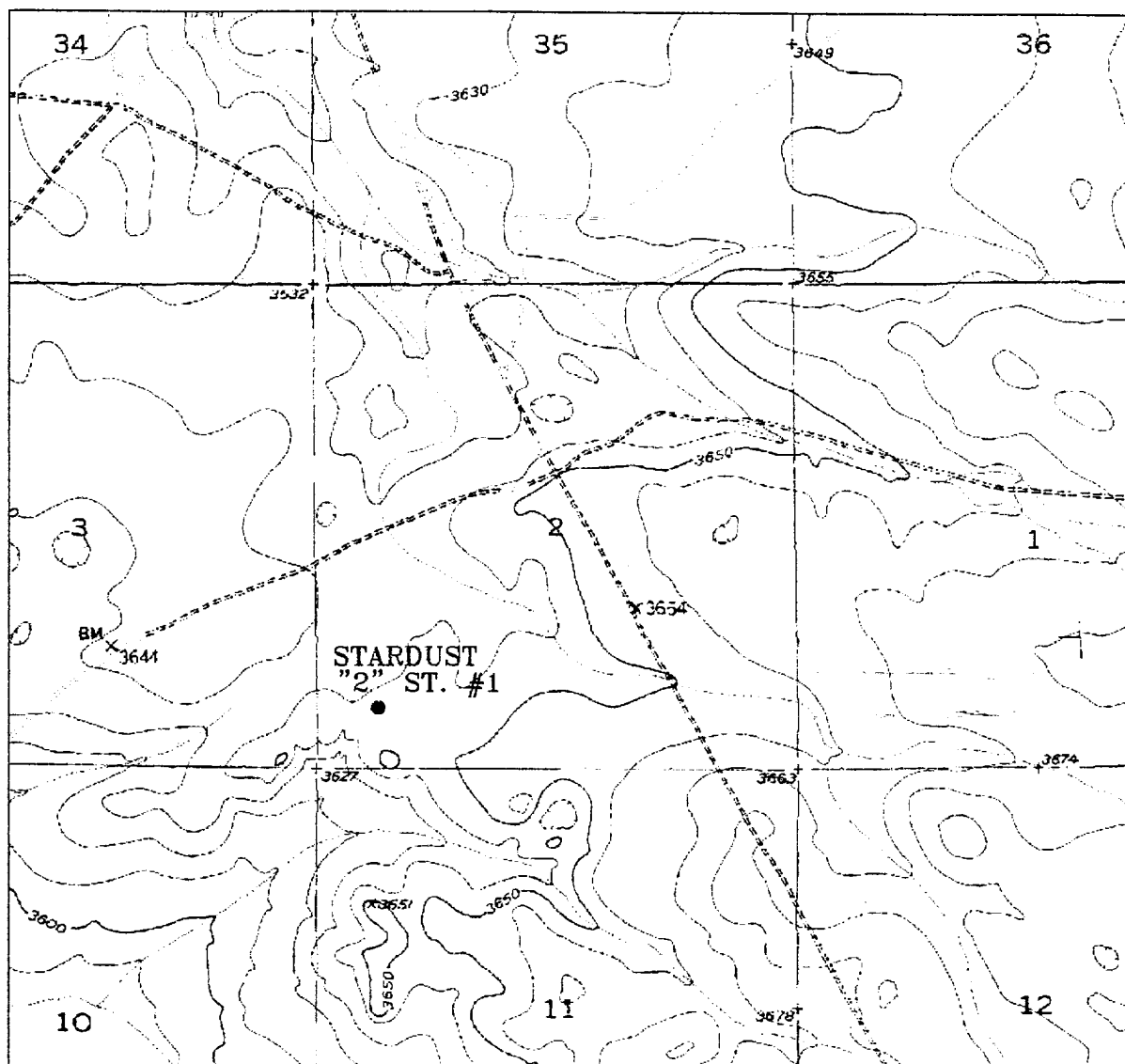
REF: STARDUST "2" STATE #1 / Well Pad Topo

THE STARDUST "2" STATE No. 1 LOCATED 660' FROM THE SOUTH AND 660' FROM THE WEST LINE OF SECTION 2, TOWNSHIP 15 SOUTH, RANGE 28 EAST, N.M.P.M., CHAVES COUNTY, NEW MEXICO.

Basin Surveys P.O. BOX 1786 - HOBBS, NEW MEXICO

W.O. Number: 2525

Drawn By: K. GOAD



STARDUST "2" STATE #1

Located at 660' FSL and 660' FWL

Section 2, Township 15 South, Range 28 East,
N.M.P.M., Chaves County, New Mexico.

basin
surveys
focused on excellence
in the oilfield

P.O. Box 1736
1120 N. West County Rd.
Hobbs, New Mexico 88241
(505) 393-7316 - Office
(505) 392-3074 - Fax
basinsurveys.com

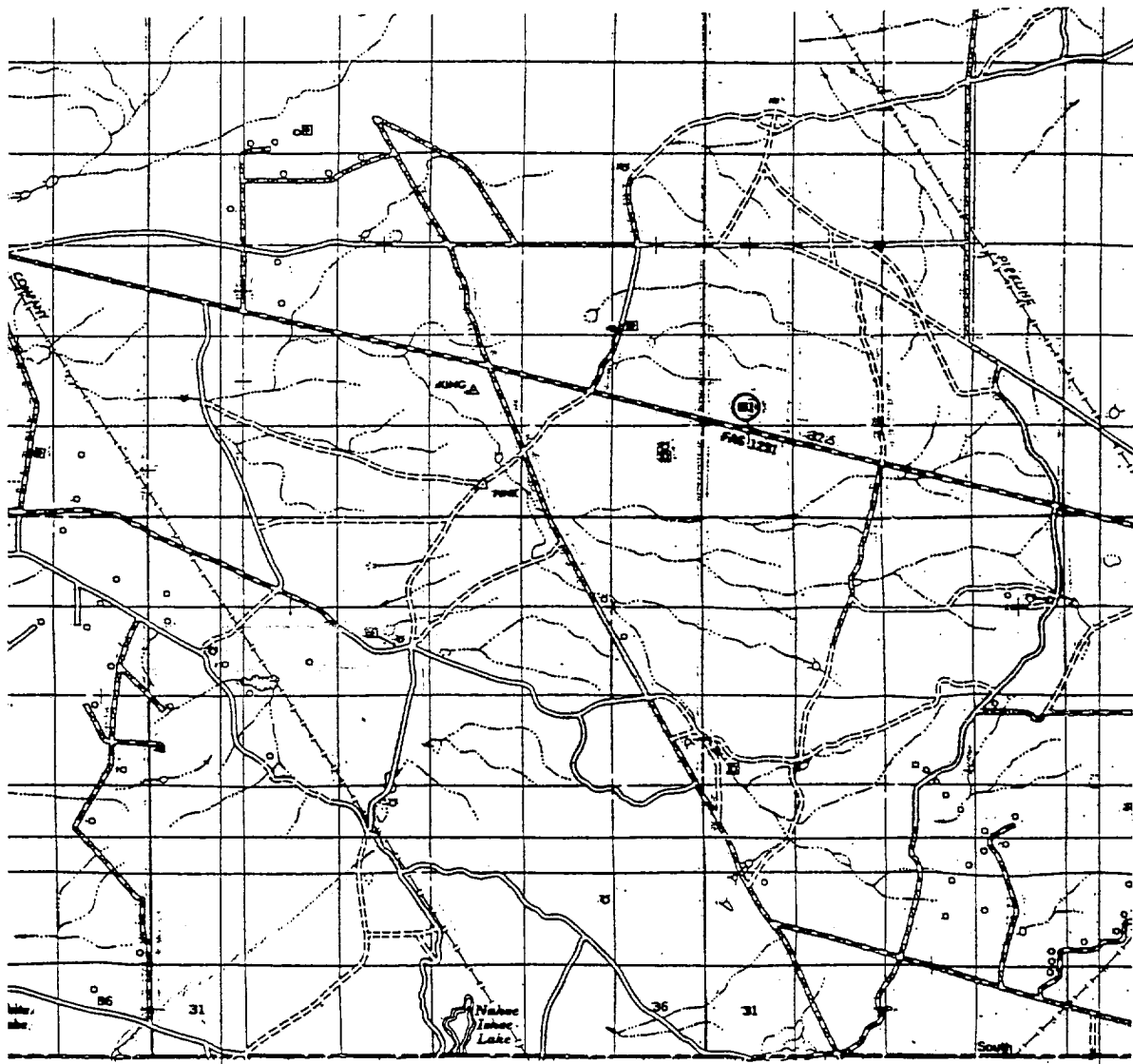
W.O. Number: 2515AA - KJG CD#5

Survey Date: 05-22-2002

Scale: 1" = 2000'

Date: 05-29-2002

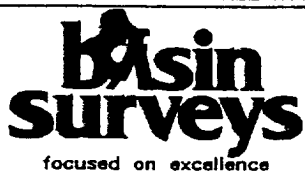
DOMINION
OKLAHOMA TEXAS
E&P, INC.



STARDUST "2" STATE #1

Located at 660' FSL and 660' FWL

Section 2, Township 15 South, Range 28 East,
N.M.P.M., Chaves County, New Mexico.



P.O. Box 1786
1120 N. West County Rd.
Hobbs, New Mexico 88241
(505) 393-7316 - Office
(505) 392-3074 - Fax
basinsurveys.com

W.O. Number: 2525AA - KJG CD#5

Survey Date: 05-22-2002

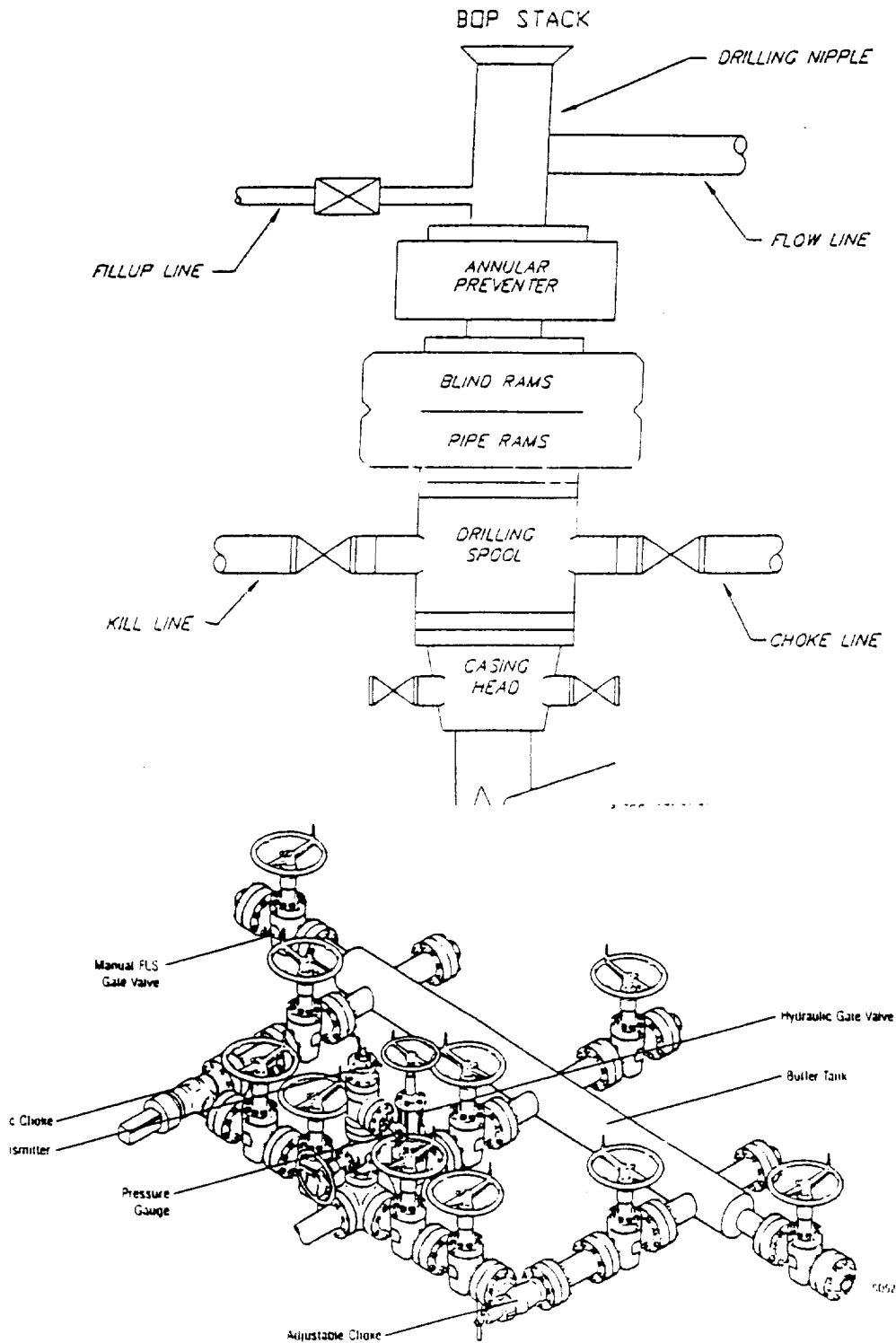
Scale: 1" = 2 MILES

Date: 05-20-2002

DOMINION
OKLAHOMA TEXAS
E&P, INC.

Exhibit 6

TYPICAL 5,000 p.s.i. BLOWOUT PREVENTER & CHOKE MANIFOLD SCHEMATIC



Typical Choke Manifold Designed for Land Drilling Applications