

MEXICO OIL CONSERVATION COMMISSION
WELL LOCATION AND ACREAGE DEDICATION PLAT

Form C-102
Supersedes C-128
Effective 1-1-65

All distances must be from the outer boundaries of the Section.

Operator BEARING SERVICE & SUPPLY COMPANY			Lease Daughterity		Well No. 2
Unit Letter "K"	Section 3	Township 17 South	Range 27 East	County Eddy	
Actual Footage Location of Well: 2310 feet from the South line and 2310 feet from the West line					
Ground Level Elev. 3479	Producing Formation SA		Pool Daughterity SA		Dedicated Acreage: 40 Acres

- Outline the acreage dedicated to the subject well by colored pencil or hachure marks on the plat below.
- If more than one lease is dedicated to the well, outline each and identify the ownership thereof (both as to working interest and royalty).
- If more than one lease of different ownership is dedicated to the well, have the interest of all owners been consolidated by communitization, unitization, force-pooling, etc?

RECEIVED

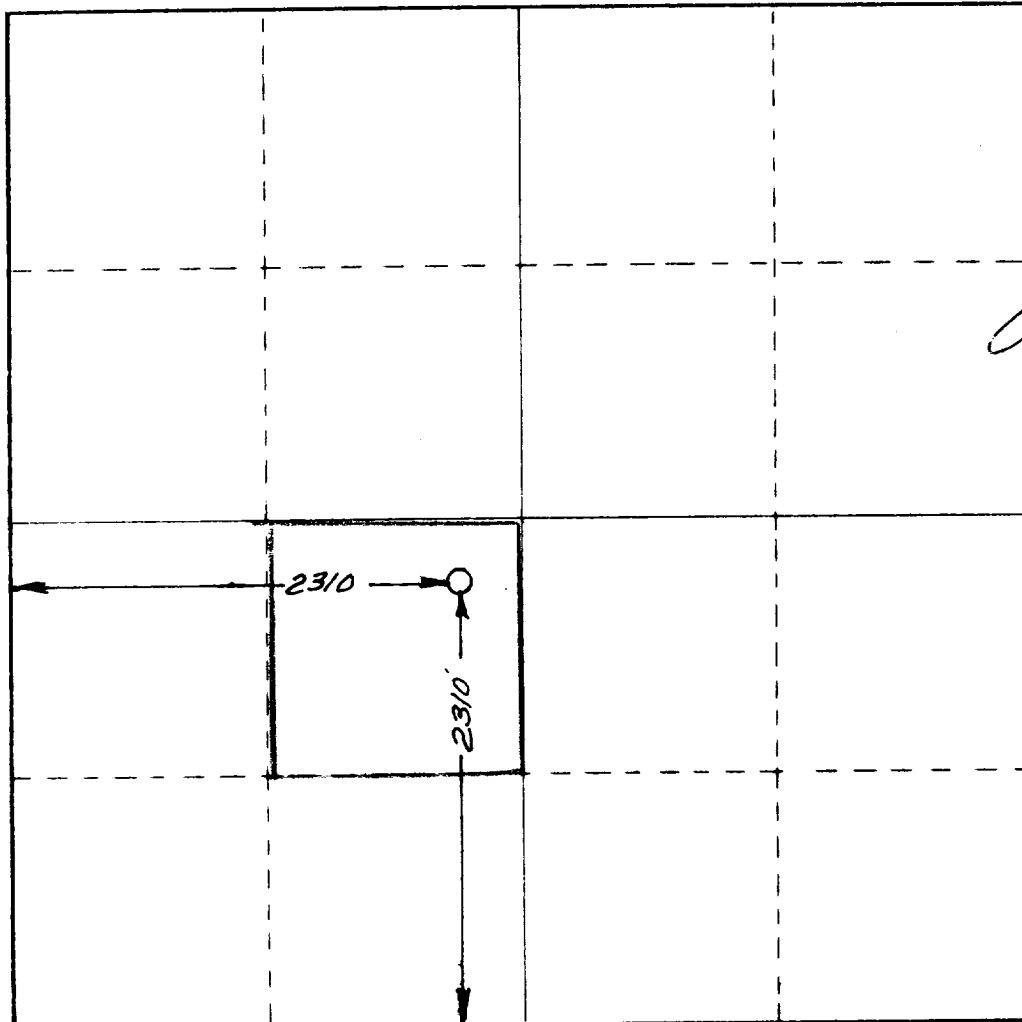
MAY 03 1977

**U.S. GEOLOGICAL SURVEY
ARTESIA, NEW MEXICO**

☐ Yes ☐ No If answer is "yes," type of consolidation _____

If answer is "no," list the owners and tract descriptions which have actually been consolidated. (Use reverse side of this form if necessary.) _____

No allowable will be assigned to the well until all interests have been consolidated (by communitization, unitization, forced-pooling, or otherwise) or until a non-standard unit, eliminating such interests, has been approved by the Commission.



CERTIFICATION

I hereby certify that the information contained herein is true and complete to the best of my knowledge and belief.

Name
James E. Shuey
Position
Manager
Company
Bearing Ser & Sup Co

Date
May 4, 1977

I hereby certify that the well location shown on this plat was plotted from field notes of actual surveys made by me or under my supervision, and that the same is true and correct to the best of my knowledge and belief.

Date Survey
May 4, 1977
Registered Professional Engineer and/or Surveyor
L. JONES
3640
Certificate No. *2155*

