

NEW MEXICO OIL CONSERVATION COM.
Santa Fe, New Mexico

RECEIVED
Form C-101
Revised (12/1/55)
JUL 31 1961
30-015-00685
ARTESIA, OFFICE

NOTICE OF INTENTION TO DRILL

Notice must be given to the District Office of the Oil Conservation Commission and approval obtained before drilling or recompletion begins. If changes in the proposed plan are considered advisable, a copy of this notice showing such changes will be returned to the sender. Submit this notice in QUINTUPPLICATE. One copy will be returned following approval. See additional instructions in Rules and Regulations of the Commission.

If State Land submit 6 Copies Attach Form C-128 in triplicate to first 3 copies of form C-101

Artesia, New Mexico

July 31, 1961

(Place)

(Date)

OIL CONSERVATION COMMISSION
SANTA FE, NEW MEXICO

Gentlemen:

You are hereby notified that it is our intention to commence the Drilling of a well to be known as
Kersey & Company

Ramapo

(Company or Operator)

5

I

(Lease)

Well No., in The well is

1650

South

330

located feet from the line and feet from the
East

line of Section 36, T. 17S, R. 27E, NMPM.

(GIVE LOCATION FROM SECTION LINE)

Empire Abo

Pool,

Eddy

County

If State Land the Oil and Gas Lease is No. B. 752

If patented land the owner is

Address

We propose to drill well with drilling equipment as follows:

Rotary

The status of plugging bond is Blanket

Drilling Contractor Pecos Drilling Company

We intend to complete this well in the Abo
formation at an approximate depth of 6,000 feet.

CASING PROGRAM

We propose to use the following strings of Casing and to cement them as indicated:

Size of Hole	Size of Casing	Weight per Foot	New or Second Hand	Depth	Sacks Cement
10" 11"	8 5/8"	28#	New	1100	350
8"	4 1/2"	9 1/2#	New	6000	750

If changes in the above plans become advisable we will notify you immediately.

ADDITIONAL INFORMATION (If recompletion give full details of proposed plan of work.)

Approved AUG 3 1961, 19.....
Except as follows:

OIL CONSERVATION COMMISSION

By M. L. Armstrong

Sincerely yours,

Kersey & Company

(Company or Operator)

By

Harold Kersey

Owner

Position

Send Communications regarding well to

Name

Kersey & Company

Address

Box 316, Artesia, New Mexico

NEW MEXICO OIL CONSERVATION COMMISSION
WELL LOCATION AND ACREAGE DEDICATION PLAT

FORM C-128
 Revised 5/1/57

SEE INSTRUCTIONS FOR COMPLETING THIS FORM ON THE REVERSE SIDE

RECEIVED
JUL 31 1961

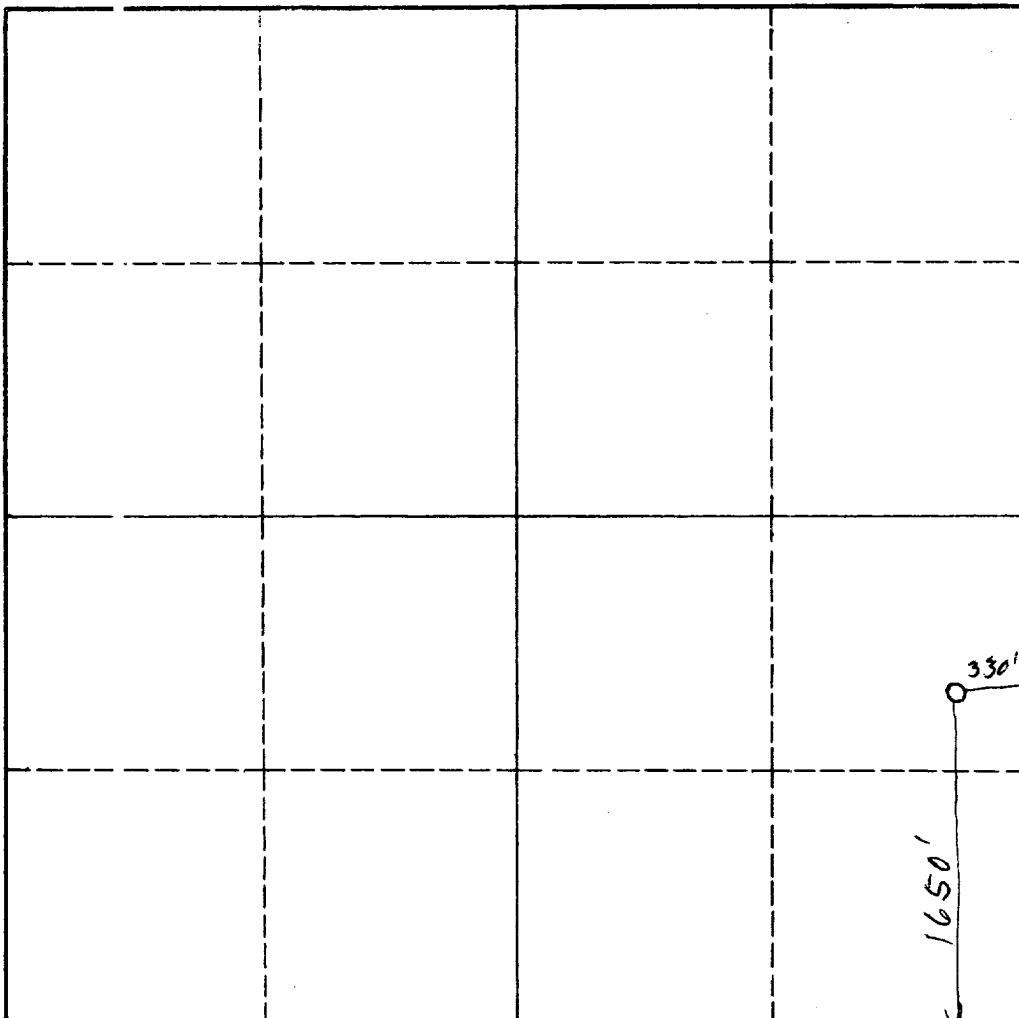
SECTION A

Operator Kersey & Company		Lease Ramapo		ARTESIA, OFFICE	
Unit Letter I	Section 36	Township 17S	Range 27E	County Eddy	
Actual Footage Location of Well: 1650 feet from the South line and 330 feet from the East line					
Ground Level Elev.	Producing Formation Abo		Pool Empire Abo	Dedicated Acreage: 40 Acres	

1. Is the Operator the only owner in the dedicated acreage outlined on the plat below? YES V NO ____ . ("Owner" means the person who has the right to drill into and to produce from any pool and to appropriate the production either for himself or for himself and another. (65-3-29 (e) NMSA 1935 Comp.)
2. If the answer to question one is "no," have the interests of all the owners been consolidated by communitization agreement or otherwise? YES ____ NO ____ . If answer is "yes," Type of Consolidation _____
3. If the answer to question two is "no," list all the owners and their respective interests below:

Owner	Land Description

SECTION B



CERTIFICATION

I hereby certify that the information in SECTION A above is true and complete to the best of my knowledge and belief.

Name	Harold Kersey
Position	Owner
Company	Kersey & Company
Date	July 31, 1961

I hereby certify that the well location shown on the plat in SECTION B was plotted from field notes of actual surveys made by me or under my supervision, and that the same is true and correct to the best of my knowledge and belief.

Date Surveyed	July 31, 1961
Registered Professional Engineer and/or Land Surveyor	Harold Kersey
Certificate No.	802

0 330 660 990 1320 1650 1980 2310 2640 2000 1500 1000 500 0

INSTRUCTIONS FOR COMPLETION OF FORM C-128

1. Operator shall furnish and certify to the information called for in Section A.
2. Operator shall outline the dedicated acreage for *both* oil and gas wells on the plat in Section B.
3. A registered professional engineer or land surveyor registered in the State of New Mexico or approved by the Commission shall show on the plat the location of the well and certify this information in the space provided.
4. All distances shown on the plat must be from the outer boundaries of the Section.
5. If additional space is needed for listing owners and their respective interests as required in question 3 of Section A, please use space below.

OIL CONSERVATION COMMISSION		
ARTESIA DISTRICT OFFICE		
No. Copies Received <u>6</u>		
DISTRIBUTION		
	COPIES	FURNISHED
OPERATOR		
SANTA FE		
PRORATION OFFICE		
STATE LAND OFFICE	1	
U. S. G. S.	2	
TRANSPORTER		
FILE	1	
BUREAU OF MINES		