

Company Brown and Thorp Oil Company

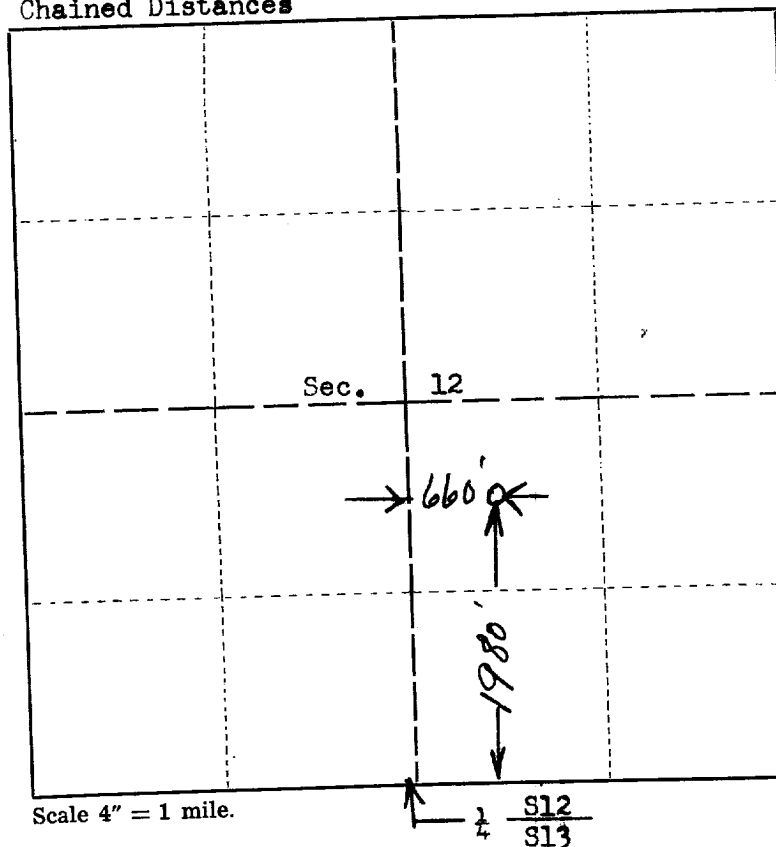
Lease Superior- State Well No. 1

Sec. 12 T. 17 S., R. 28 E., N.M.P.M.

Location NW¹SE¹(1980' from South and East Lines)

County Eddy, New Mexico

Chained Distances



N USGLOS Brasscap
T17S-R28E
S12
S13 S7-R29E

This is to certify that the above plat was prepared from field notes of actual surveys made by me or under my supervision and that the same are true and correct to the best of my knowledge and belief.

Seal:

Artesia, New Mexico

John A. Mathias Jr.
Registered Professional
Engineer and Land Surveyor.

Surveyed April 19, 1955

17532 Advocate Print