

NEW MEXICO OIL CONSERVATION COMMISSION
Santa Fe, New Mexico

Form G-101
Revised (12/1/55)

NOTICE OF INTENTION TO DRILL

Notice must be given to the District Office of the Oil Conservation Commission and approval obtained before drilling or recompletion begins. If changes in the proposed plan are considered advisable, a copy of this notice showing such changes will be returned to the sender. Submit this notice in QUINTUPLICATE. One copy will be returned following approval. See additional instructions in Rules and Regulations of the Commission. If State Land submit 6 Copies Attach Form G- 128 in triplicate, to first 2 copies of Form G-101

Artesia, New Mexico
(Place)

September 5, 1961
(Date)

OIL CONSERVATION COMMISSION
SANTA FE, NEW MEXICO

Gentlemen:

You are hereby notified that it is our intention to commence the Drilling of a well to be known as

McCoy & Stevens
(Company or Operator)

Superior
(Lease)

Well No. 1, in L (Unit)

The well is

located 660 feet from the West line and 1980 feet from the

South line of Section 12, T. 17S, R. 28E, NMPM.

(GIVE LOCATION FROM SECTION LINE) East Red Lake Queen Pool, Eddy County

If State Land the Oil and Gas Lease is No. E-7254

If patented land the owner is

Address

We propose to drill well with drilling equipment as follows: Cable Tools

The status of plugging bond is Blanket bond of McCoy & Stevens

Drilling Contractor Kincaid & Watson Drilling Company

We intend to complete this well in the Penrose formation at an approximate depth of 1750 feet.

CASING PROGRAM

We propose to use the following strings of Casing and to cement them as indicated:

| Size of Hole | Size of Casing | Weight per Foot | New or Second Hand | Depth | Sacks Cement |
|--------------|----------------|-----------------|--------------------|-------|--------------|
| 11" | 10 3/4" | 40 | S.H. | 125' | None |
| 9" | 8 5/8" | 24 | S.H. | 300' | 50 |
| 8" | 5 1/2" | 14 | New | 1750' | 100 |

If changes in the above plans become advisable we will notify you immediately.

ADDITIONAL INFORMATION (If recompletion give full details of proposed plan of work.)

SEP 5 1961

Approved _____, 19____
Except as follows:

OIL CONSERVATION COMMISSION

By M. L. Armstrong

Sincerely yours,

McCoy & Stevens
(Company or Operator)

By

Position Agent

Send Communications regarding well to

Name Kincaid & Watson Drilling Company

Address Box 498, Artesia, New Mexico

| | |
|---------------------------|------------|
| NUMBER OF COPIES RECEIVED | |
| DISTRIBUTION | |
| SANTA FE | |
| FILE | |
| U.S.G.S. | |
| LAND OFFICE | |
| TRANSPORTER | OIL GAS |
| PRODUCTION OFFICE | |
| OPERATOR | |

NEW MEXICO OIL CONSERVATION COMMISSION
WELL LOCATION AND ACREAGE DEDICATION PLAT
 SEE INSTRUCTIONS FOR COMPLETING THIS FORM ON THE REVERSE SIDE

FORM C-128
 4-15-57

SEP 5 1961

SECTION A

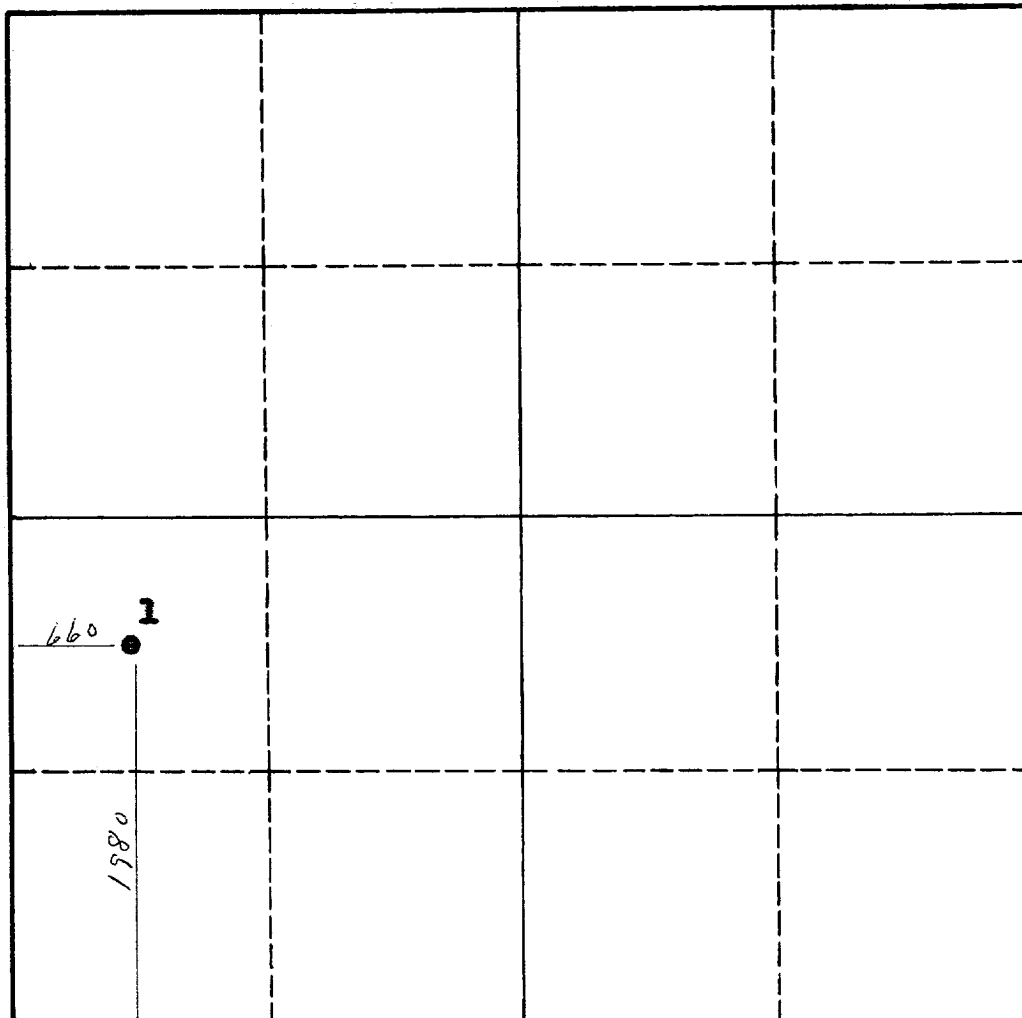
ARTERIA OFFICE

| | | | | |
|---|---------------------------------------|------------------------------------|---------------------------------------|-----------------------|
| Operator McCoy & Stevens | | Lease Superior | | Well No. 1 |
| Unit Letter L | Section 12 | Township 17 South | Range 28 East | County Eddy |
| Actual Footage Location of Well: 1980 feet from the South line and 660 feet from the West line | | | | |
| Ground Level Elev. 3616 | Producing Formation Penrose | Pool East Red Lake Queen | Dedicated Acreage: 40 Acres | |

1. Is the Operator the only owner in the dedicated acreage outlined on the plat below? YES ☒ NO ____ . ("Owner" means the person who has the right to drill into and to produce from any pool and to appropriate the production either for himself or for himself and another. (65-3-29 (e) NMSA 1935 Comp.)
2. If the answer to question one is "no," have the interests of all the owners been consolidated by communitization agreement or otherwise? YES ____ NO ____ . If answer is "yes," Type of Consolidation _____
3. If the answer to question two is "no," list all the owners and their respective interests below:

| Owner | Land Description |
|-------|------------------|
| | |
| | |

SECTION B



CERTIFICATION

I hereby certify that the information in SECTION A above is true and complete to the best of my knowledge and belief.

| |
|---------------------------------------|
| Name <i>Drue Holmer</i> |
| Position Agent |
| Company McCoy & Stevens |
| Date September 5, 1961 |

I hereby certify that the well location shown on the plat in SECTION B was plotted from field notes of actual surveys made by me or under my supervision, and that the same is true and correct to the best of my knowledge and belief.

| |
|---|
| Date Surveyed Sept. 2, 1961 |
| Registered Professional Engineer and/or Land Surveyor <i>John A. Matting</i> |
| Certificate No. 1502 |

0 330 660 990 1320 1650 1980 2310 2640 2000 1500 1000 500 0