

NEW MEXICO OIL CONSERVATION COMMISSION
WELL LOCATION AND ACREAGE DEDICATION PLAT

File
4565 Form C-102
State Land Office Supersedes C-128
Effective 1-1-65

All distances must be from the outer boundaries of the Section.

Operator Collier & Collier ✓			Lease State B-1969			Well No. #7		
Unit Letter J	Section 22	Township 17 South	Range 28 East	County Eddy				
Actual Footage Location of Well: 2311 feet from the East line and 2225 feet from the South line								
Ground Level Elev.		Producing Formation San Andres		Pool Red Lake Queen Gr. SA			Dedicated Acreage: 40 Acres	

1. Outline the acreage dedicated to the subject well by colored pencil or hachure marks on the plat below.
2. If more than one lease is dedicated to the well, outline each and identify the ownership thereof (both as to working interest and royalty).
3. If more than one lease of different ownership is dedicated to the well, have the interests of all owners been consolidated by communitization, unitization, force-pooling, etc?

RECEIVED

MAR 14 1980

O. C. D.

ARTESIA, OFFICE

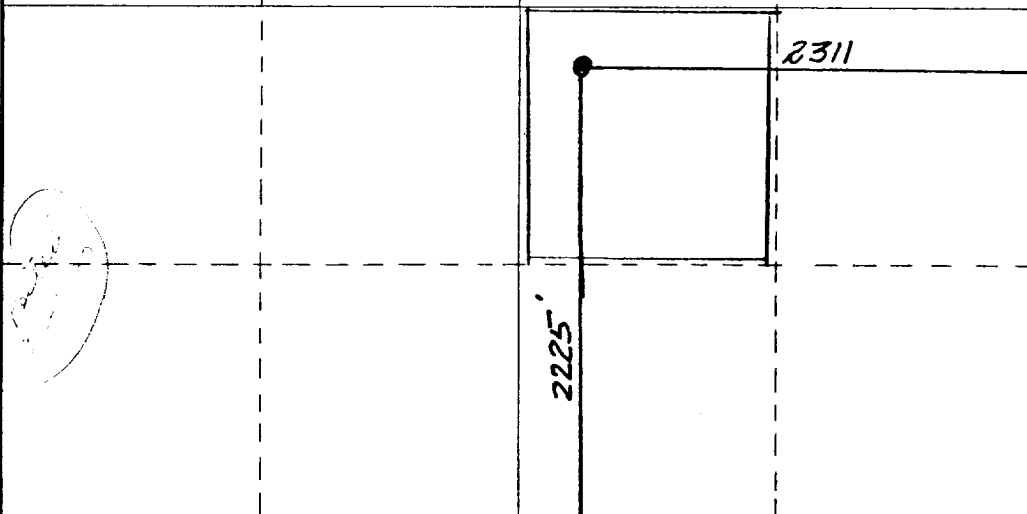
☐ Yes ☐ No If answer is "yes," type of consolidation _____

If answer is "no," list the owners and tract descriptions which have actually been consolidated. (Use reverse side of this form if necessary.) _____

No allowable will be assigned to the well until all interests have been consolidated (by communitization, unitization, forced-pooling, or otherwise) or until a non-standard unit, eliminating such interests, has been approved by the Commission.

NOTE: Plat to show location of abandoned well located near a point 2310 FSL, and 2310 FEL

This well was drilled in 1936 and all records show it to be 2970' FNL + 2970' FWL. See corrected location below



CERTIFICATION

I hereby certify that the information contained herein is true and complete to the best of my knowledge and belief.

Cheri Monk

Name

Cheri Monk

Position

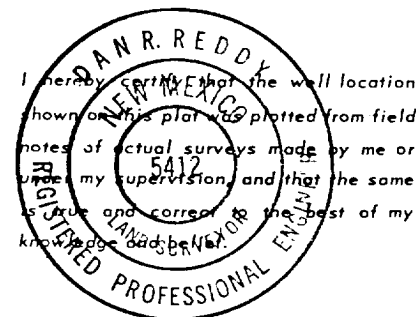
Secretary

Company

Collier & Collier

Date

March 14, 1980



Date Surveyed

February 26, 1980

Registered Professional Engineer
and/or Land Surveyor

Dan R. Reddy

Certificate No.

NM PE&LS #5412

0 330 660 990 1320 1650 1980 2310 2640 2000 1500 1000 500 0