

NO. OF COPIES RECEIVED	
DISTRIBUTION	
SANTA FE	
FILE	
U.S.G.S.	
LAND OFFICE	
OPERATOR	

O. C. D.
ARTESIA, OFFICE

5A. Indicate Type of Lease
STATE ☒ FEE ☐

5. State Oil & Gas Lease No.
B-1969

APPLICATION FOR PERMIT TO DRILL, DEEPEN, OR PLUG BACK

1a. Type of Work
DRILL ☐ DEEPEN ☒ PLUG BACK ☐
~~Re-Entry~~

b. Type of Well
OIL WELL ☒ GAS WELL ☐ OTHER ☐
SINGLE ZONE ☒ MULTIPLE ZONE ☐

7. Unit Agreement Name

8. Term or Lease Name

Collier State

9. Well No.

7

10. Field and Pool, or Wildcat

Red Lake On Grbg SA

2. Name of Operator
Marbob Energy Corporation ✓

3. Address of Operator
P.O. Drawer 217, Artesia, N.M. 88210

4. Location of Well
UNIT LETTER J LOCATED 2225 FEET FROM THE South LINE

AND 2311 FEET FROM THE East LINE OF SEC. 22 TWP. 17S RGE. 28E

11. County

Eddy

14. Proposed Depth 3000'	15A. Formation San Andres	16. Rotary or C.T. Rotary
21A. Kind & Status Plug. Bond Statewide active	21B. Drilling Contractor Collier Drilling Corp.	22. Approx. Date Work will start 9/7/82

23. PROPOSED CASING AND CEMENT PROGRAM

SIZE OF HOLE	SIZE OF CASING	WEIGHT PER FOOT	SETTING DEPTH	SACKS OF CEMENT	EST. TOP
	10"		145'		
	7"		1368'		
6"	4 1/2"	10.50#	3000'	600 sax	Circulate

We propose to re-enter and deepen from present TD of 1957' to 3000' to test the San Andres, run 4 1/2" 10.50# new casing, cement w/approximately 600 sax and circulate to surface.

IN ABOVE SPACE DESCRIBE PROPOSED PROGRAM; IF PROPOSAL IS TO DEEPEN OR PLUG BACK, GIVE DATA ON PRESENT PRODUCTIVE ZONE AND PROPOSED NEW PRODUCTIVE ZONE. GIVE BLOWOUT PREVENTER PROGRAM, IF ANY.

hereby certify that the information above is true and complete to the best of my knowledge and belief.

Signed Caroline Rios Title Production Clerk Date 9/2/82

(This space for State Use)

APPROVED BY Lesho A. Clements TITLE SUPERVISOR, DISTRICT II DATE SEP 7 1982

CONDITIONS OF APPROVAL, IF ANY:

NEW MEXICO OIL CONSERVATION COMMISSION
WELL LOCATION AND ACREAGE DEDICATION PLAT

Form C-102
Supersedes C-128
Effective 1-1-65

All distances must be from the outer boundaries of the Section.

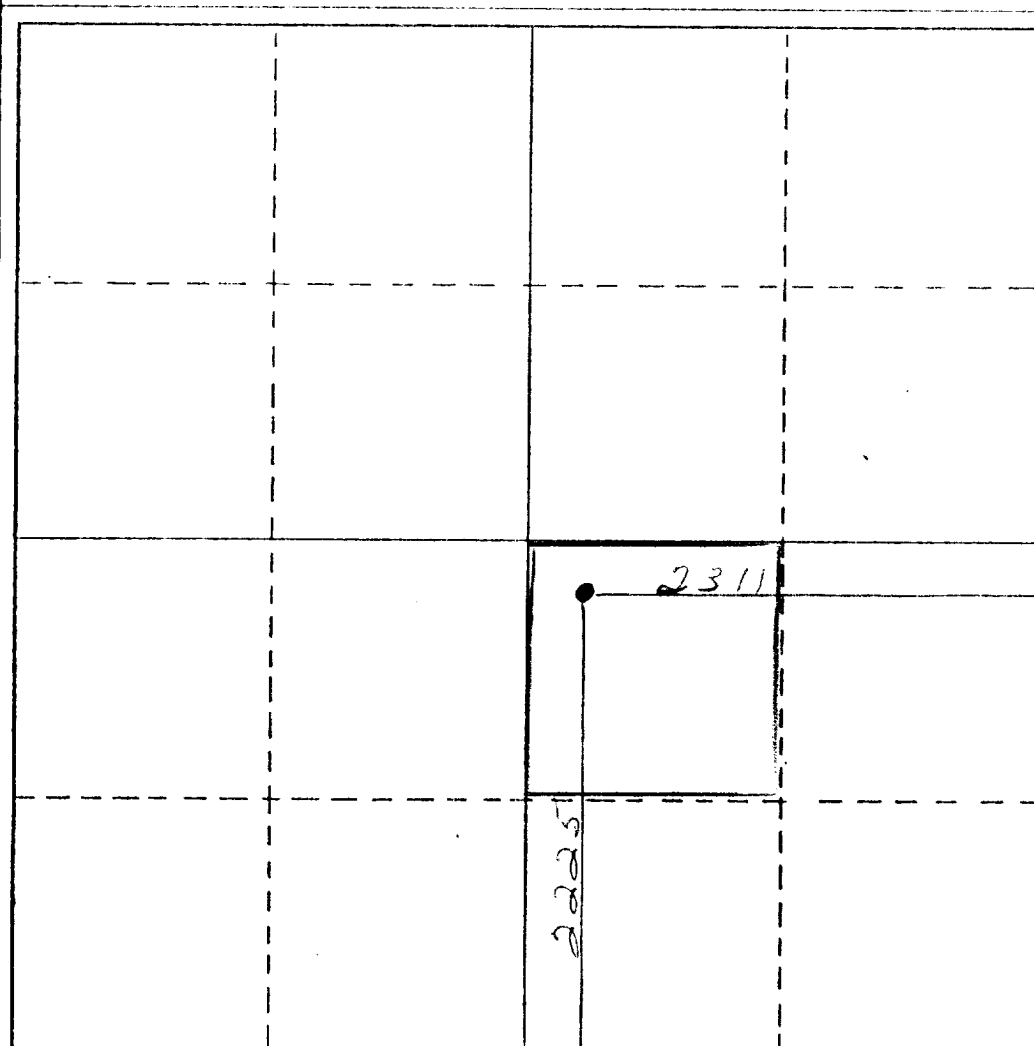
Operator Marbob Energy Corporation			Lease Collier State		Well No. 7
Unit Letter J	Section 22	Township 17S	Range 28E	County Eddy	
Actual Footage Location of Well: 2225 feet from the South line and 2311 feet from the East line					
Ground Level Elev.	Producing Formation San Andres	Pool Red Lake Qn Grbg SA	Dedicated Acreage: 40 Acres		

1. Outline the acreage dedicated to the subject well by colored pencil or hatchure marks on the plat below.
2. If more than one lease is dedicated to the well, outline each and identify the ownership thereof (both as to working interest and royalty).
3. If more than one lease of different ownership is dedicated to the well, have the interests of all owners been consolidated by communitization, unitization, force-pooling, etc?

☐ Yes ☐ No If answer is "yes," type of consolidation _____

If answer is "no," list the owners and tract descriptions which have actually been consolidated. (Use reverse side of this form if necessary.) _____

No allowable will be assigned to the well until all interests have been consolidated (by communitization, unitization, forced-pooling, or otherwise) or until a non-standard unit, eliminating such interests, has been approved by the Commission.



CERTIFICATION

I hereby certify that the information contained herein is true and complete to the best of my knowledge and belief.

Carolyn Orris

Name
Carolyn Orris

Position
Production Clerk

Company
Marbob Energy Corp.

Date
9/2/82

I hereby certify that the well location shown on this plat was plotted from field notes of actual surveys made by me or under my supervision, and that the same is true and correct to the best of my knowledge and belief.

Date Surveyed

Registered Professional Engineer and/or Land Surveyor

Certificate No.

