

RECEIVED

DEC 5 1980

State B-1969

O. C. D.

ARTESIA, OFFICE

#9

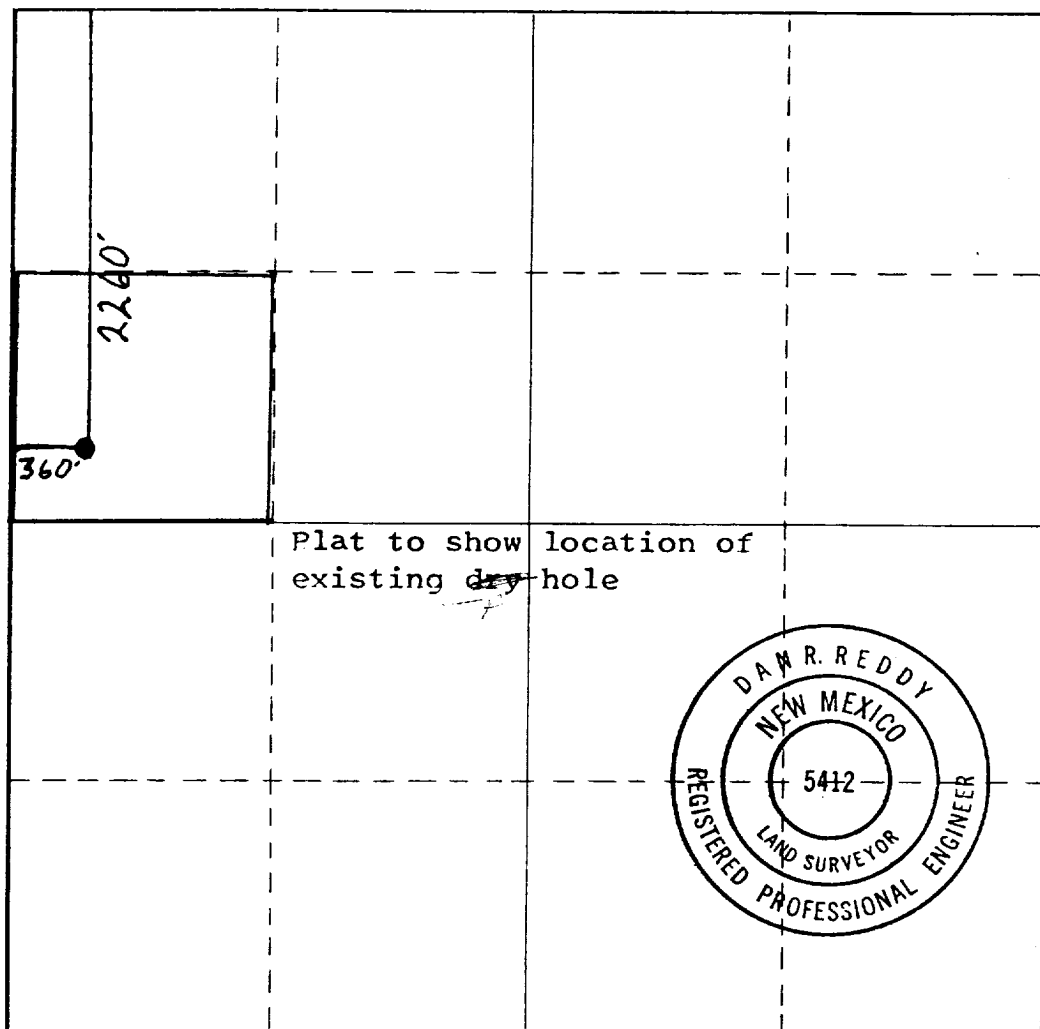
Well Letter E	Section 22	Township 17 South	Range 28 East	County Eddy
Actual Footage Location of Well: 2260 feet from the North line and 360 feet from the West line				
Ground Level Elev. 3577.	Producing Formation San Andres	Pool Red Lake Queen Gr. San Andres	Dedicated Acreage: 40 Acres	

1. Outline the acreage dedicated to the subject well by colored pencil or hachure marks on the plat below.
2. If more than one lease is dedicated to the well, outline each and identify the ownership thereof (both as to working interest and royalty).
3. If more than one lease of different ownership is dedicated to the well, have the interests of all owners been consolidated by communitization, unitization, force-pooling, etc?

☐ Yes ☐ No If answer is "yes," type of consolidation _____

If answer is "no," list the owners and tract descriptions which have actually been consolidated. (Use reverse side of this form if necessary.) _____

No allowable will be assigned to the well until all interests have been consolidated (by communitization, unitization, forced-pooling, or otherwise) or until a non-standard unit, eliminating such interests, has been approved by the Commission.



CERTIFICATION

I hereby certify that the information contained herein is true and complete to the best of my knowledge and belief.

Donald R. Craig
Name
Donald R. Craig

Position
President

Company
Collier Energy, Inc.

Date
December 2, 1980

I hereby certify that the well location shown on this plat was plotted from field notes of actual surveys made by me or under my supervision, and that the same is true and correct to the best of my knowledge and belief.

Date Surveyed

August 7, 1980

Registered Professional Engineer and/or Land Surveyor

DAW R. REDDY
Certificate No.

NM PE&LS #5412

*Posted 10/12/80
Amended location*

0 330 660 990 1320 1650 1980 2310 2640 2000 1500 1000 500 0