

NEW MEXICO OIL CONSERVATION COMMISSION
WELL LOCATION AND ACREAGE DEDICATION PLAT
SEE INSTRUCTIONS FOR COMPLETING THIS FORM ON THE REVERSE SIDE

FORM C-128
Revised 5/1/57
RECEIVED
JAN 6 1961

NUMBER OF COPIES RECEIVED	
DISTRIBUTION	
SANTA FE	
FILE	
U.S.G.S.	
LAND OFFICE	
TRANSPORTER	OIL
	GAS
PRORATION OFFICE	
OPERATOR	

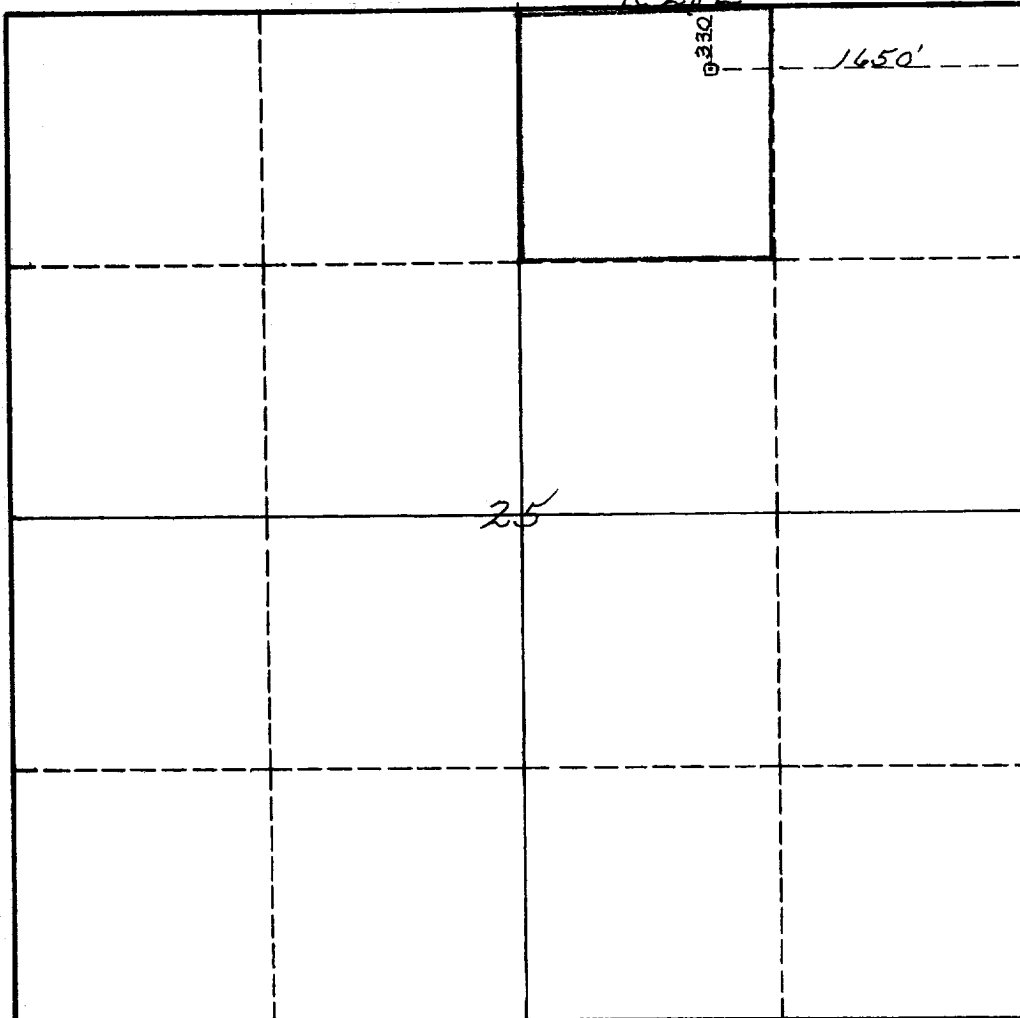
SECTION A

Operator Donnelly Drilling Co., Inc.		Lease Flynn-Welch and Yates State		Well No. 3
Unit Letter B	Section 25	Township 17S	Range 28E	County Eddy
Actual Footage Location of Well: 330 feet from the North line and 1650 feet from the East line				
Ground Level Elev.	Producing Formation Seven Rivers	Pool Aid	Dedicated Acreage: 40 Acres	

1. Is the Operator the only owner in the dedicated acreage outlined on the plat below? YES ☒ NO ____ . ("Owner" means the person who has the right to drill into and to produce from any pool and to appropriate the production either for himself or for himself and another. (65-3-29 (e) NMSA 1935 Comp.)
2. If the answer to question one is "no," have the interests of all the owners been consolidated by communitization agreement or otherwise? YES ____ NO ____ . If answer is "yes," Type of Consolidation ____
3. If the answer to question two is "no," list all the owners and their respective interests below:

Owner	Land Description

SECTION B **R28E**



CERTIFICATION

I hereby certify that the information in SECTION A above is true and complete to the best of my knowledge and belief.

Name **Donnelly**
Position **President**
Company **Donnelly Drilling Co.**
Date **January 4, 1961**

I hereby certify that the well location shown on the plat in SECTION B was plotted from field notes of actual surveys made by me or under my supervision, and that the same is true and correct to the best of my knowledge and belief.

Date Surveyed **December 7, 1960**
Registered Professional Engineer and/or Land Surveyor

James H. Brown
Certificate No. **542**

0 330 660 990 1320 1650 1980 2310 2640 2000 1500 1000 500 0

INSTRUCTIONS FOR COMPLETION OF FORM C-128

1. Operator shall furnish and certify to the information called for in Section A.
2. Operator shall outline the dedicated acreage for *both* oil and gas wells on the plat in Section B.
3. A registered professional engineer or land surveyor registered in the State of New Mexico or approved by the Commission shall show on the plat the location of the well and certify this information in the space provided.
4. All distances shown on the plat must be from the outer boundaries of the Section.
5. If additional space is needed for listing owners and their respective interests as required in question 3 of Section A, please use space below.

OIL CONSERVATION COMMISSION ARTESIA DISTRICT OFFICE	
No. Copies Received 6	
DISTRIBUTION	
	NO. FURNISHED
OPERATOR	1
SANTA FE	1
PRODUCTION OFFICE	1
STATE LAND OFFICE	2
U. S. G.	1
TRANSPORTER	1
FILE	1
BUREAU OF MINES	1