

NEW MEXICO OIL CONSERVATION COMMISSION
WELL LOCATION AND ACREAGE DEDICATION PLAT

FORM C-128
 Revised 5/1/57

RECEIVED

SEE INSTRUCTIONS FOR COMPLETING THIS FORM ON THE REVERSE **AUG 23 1960**

SECTION A

Operator Hondo-Western-Yates			Lease State "A"		O. C. C.	Well No. 32
Unit Letter J	Section 25	Township 17 - S	Range 28 - E	County Elddy		

Actual Footage Location of Well: **1650** feet from the **South** line and **1980** feet from the **East** line

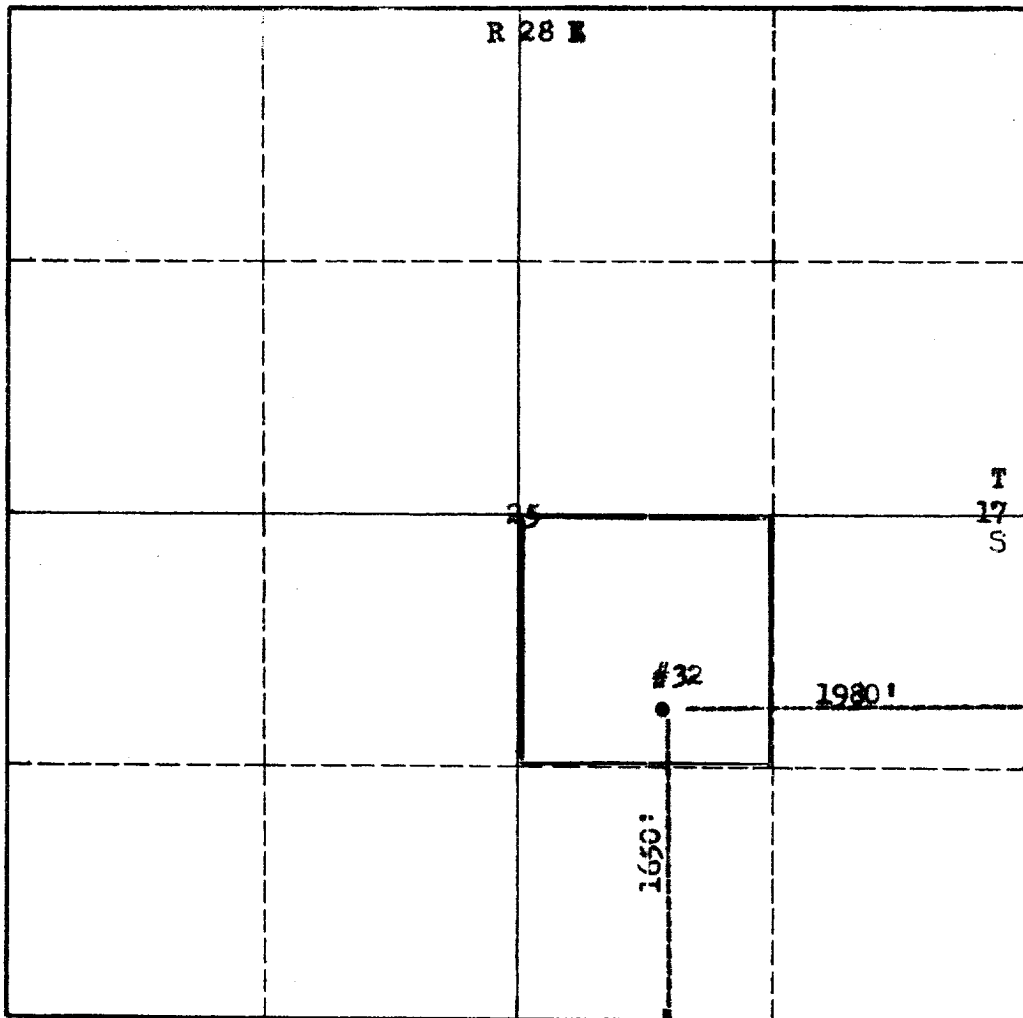
Ground Level Elev. 3652	Producing Formation Alto Reef	Pool	Dedicated Acreage: 40 Acres
-----------------------------------	---	------	---------------------------------------

1. Is the Operator the only owner in the dedicated acreage outlined on the plat below? YES ☒ NO ____ . ("Owner" means the person who has the right to drill into and to produce from any pool and to appropriate the production either for himself or for himself and another. (65-3-29 (e) NMSA 1935 Comp.)
2. If the answer to question one is "no," have the interests of all the owners been consolidated by communitization agreement or otherwise? YES ____ NO ____ . If answer is "yes," Type of Consolidation ____
3. If the answer to question two is "no," list all the owners and their respective interests below:

Owner	Land Description

SECTION B

R 28 E



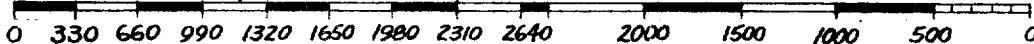
CERTIFICATION

I hereby certify that the information in SECTION A above is true and complete to the best of my knowledge and belief.

Name <i>A. J. Slemons by S. M. Edgerton</i>
Position Dist. Prod. Supt.
Company Hondo Oil & Gas Company
Date 8-19-60

I hereby certify that the well location shown on the plat in SECTION B was plotted from field notes of actual surveys made by me or under my supervision, and that the same is true and correct to the best of my knowledge and belief.

Date Surveyed August 18, 1960
Registered Professional Engineer and/or Land Surveyor <i>[Signature]</i>
Certificate No. 3280



INSTRUCTIONS FOR COMPLETION OF FORM C-128

1. Operator shall furnish and certify to the information called for in Section A.
2. Operator shall outline the dedicated acreage for *both* oil and gas wells on the plat in Section B.
3. A registered professional engineer or land surveyor registered in the State of New Mexico or approved by the Commission shall show on the plat the location of the well and certify this information in the space provided.
4. All distances shown on the plat must be from the outer boundaries of the Section.
5. If additional space is needed for listing owners and their respective interests as required in question 3 of Section A, please use space below.

OIL CONSERVATION COMMISSION		
ARTESIA DISTRICT OFFICE		
No. Copies Received		
DISTRIBUTION		
	COPIES REQUESTED	
OPERATOR		
SANTA FE		
PRODUCTION OFFICE		
STATE LAND OFFICE		
U. S. G. S.		
TRANSPORTER		
FILE		
BUREAU OF MINES		