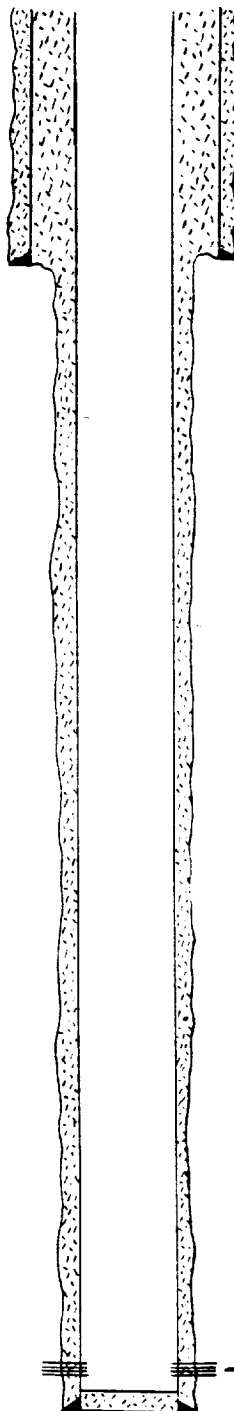


Empire Abo Unit #D-40  
Current Wellbore Configuration

March 24, 1987  
ARCO WI 34.1407

Location: 660' FSL & 660' FEL, Sec 26-T17S-R28E, Eddy County, New Mexico  
TD: 6330' PBD: 6294' GL Elev: 3665' RKB: 11' Spud: 7/12/60

Wellhead NU w/one jt of  
2-3/8" tubing



8-5/8", 28#, casing set at 724'  
in 11" hole and cemented to  
surface w/375 sx.

Empire Abo Perfs: 6199 - 6219

5-1/2", 15.5#, J-55 casing  
set at 6330' in 7-7/8" hole w/  
170 Units HYS 400 and 150 sx cm  
Cmt circulated to surface.