

NEW MEXICO OIL CONSERVATION COMMISSION
Santa Fe, New Mexico

RECEIVED

Form G-101
JUL 22 1960 Revised (12/1/55)

NOTICE OF INTENTION TO DRILL

D. C. C.
ARTESIA, OFFICE

Notice must be given to the District Office of the Oil Conservation Commission and approval obtained before drilling or recompletion begins. If changes in the proposed plan are considered advisable, a copy of this notice showing such changes will be returned to the sender. Submit this notice in QUINTUPPLICATE. One copy will be returned following approval. See additional instructions in Rules and Regulations of the Commission. If State Land submit 6 Copies Attach Form G- 128 in triplicate to first 3 copies of form G-101

Artesia, New Mexico
(Place)

7-22-60
(Date)

OIL CONSERVATION COMMISSION
SANTA FE, NEW MEXICO

Gentlemen:

You are hereby notified that it is our intention to commence the Drilling of a well to be known as

Hondo-Western-Yates

(Company or Operator)

State 'A'
(Lease)

Well No. 26

in I

(Unit)

The well is

located 660

feet from the East

line and 1650

feet from the

South

line of Section 26

T 17-S

R 28-E

NMPM.

(GIVE LOCATION FROM SECTION LINE)

Empire Abo Undesignated

Pool,

Eddy

County

If State Land the Oil and Gas Lease is No.

647

If patented land the owner is

Address

We propose to drill well with drilling equipment as follows:

Rotary

The status of plugging bond is

Blanket

Drilling Contractor

Yates Drilling Company

Artesia, New Mexico

We intend to complete this well in the

Abo

formation at an approximate depth of

6400'

feet.

CASING PROGRAM

We propose to use the following strings of Casing and to cement them as indicated:

Size of Hole	Size of Casing	Weight per Foot	New or Second Hand	Depth	Sacks Cement
11"	8-5/8"	28#	Second Hand	700	350
7-7/8"	5-1/2"	15.5#	New	6400'	660

If changes in the above plans become advisable we will notify you immediately.

ADDITIONAL INFORMATION (If recompletion give full details of proposed plan of work.)

Approved JUL 22 1960
Except as follows:

OIL CONSERVATION COMMISSION

By W. A. Gressett
OIL AND GAS INSPECTOR

Sincerely yours,

Hondo Oil & Gas Company
(Company or Operator)

By

Position Dist. Prod. Supt.

Send Communications regarding well to

Name A. J. Deans

Address Box 125, Artesia, New Mexico

NEW MEXICO OIL CONSERVATION COMMISSION **RECEIVED** FORM C-128
WELL LOCATION AND ACREAGE DEDICATION PLAT Revised 5/1/57

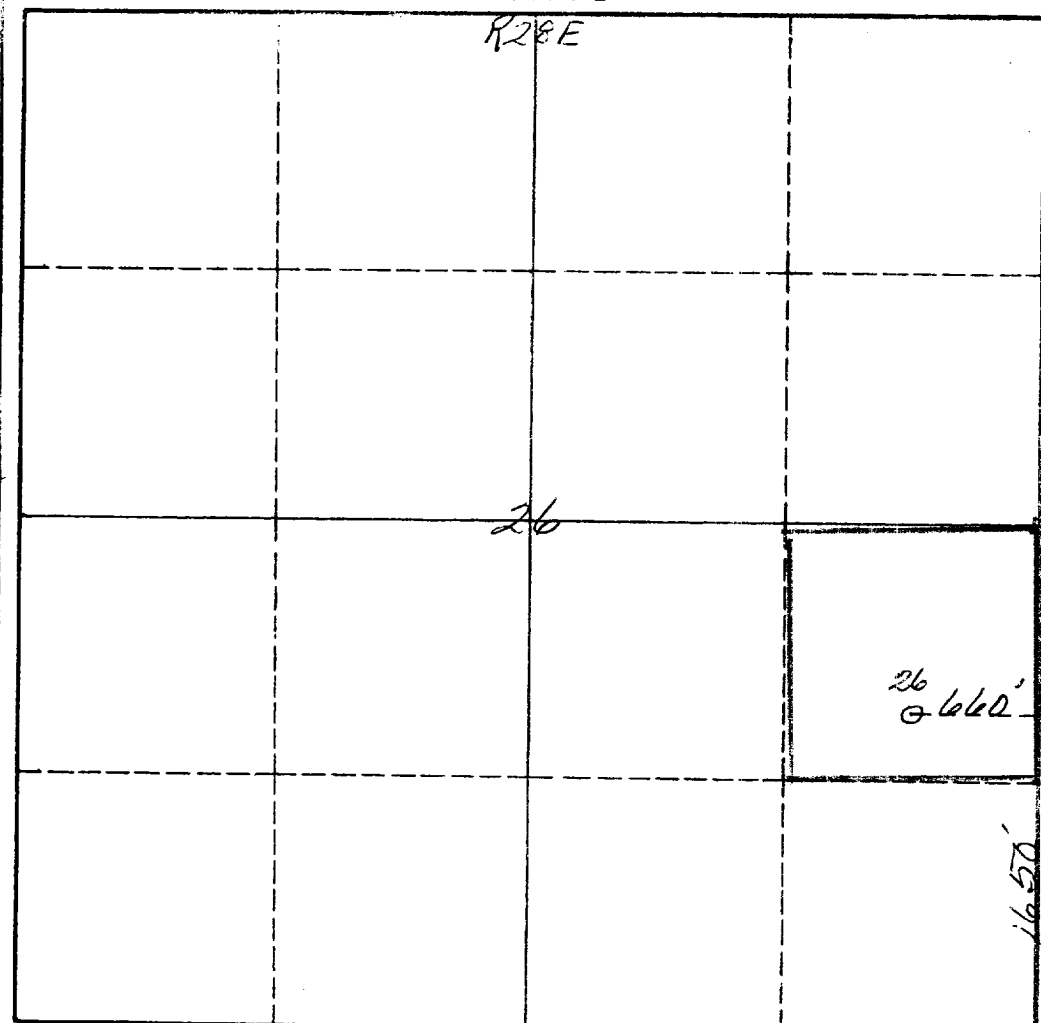
SEE INSTRUCTIONS FOR COMPLETING THIS FORM ON THE REVERSE SIDE JUL 22 1960

Operator <i>Hondo Western Yates</i>			Lease <i>State A</i>			B.C.C. No. <i>26</i>		
Unit Letter <i>T</i>	Section <i>26</i>	Township <i>17S</i>	Range <i>28E</i>	County <i>Eddy</i>				
Actual Footage Location of Well: <i>1650</i> feet from the <i>South</i> line and <i>660</i> feet from the <i>East</i> line								
Ground Level Elev. <i>3655</i>	Producing Formation			Pool	Dedicated Acreage: <i>40</i> Acres			

- Is the Operator the only owner in the dedicated acreage outlined on the plat below? YES ☒ NO ____ . ("Owner" means the person who has the right to drill into and to produce from any pool and to appropriate the production either for himself or for himself and another. (65-3-29 (e) NMSA 1935 Comp.)
- If the answer to question one is "no," have the interests of all the owners been consolidated by communitization agreement or otherwise? YES ____ NO ____ . If answer is "yes," Type of Consolidation ____
- If the answer to question two is "no," list all the owners and their respective interests below:

Owner	Land Description

SECTION B



CERTIFICATION

I hereby certify that the information in SECTION A above is true and complete to the best of my knowledge and belief.

Name <i>A. J. J. J.</i>
Position <i>Dist. Prod. Supt</i>
Company <i>Hondo O. & Gas Co.</i>
Date <i>7-22-60</i>

I hereby certify that the well location shown on the plat in SECTION B was plotted from field notes of actual surveys made by me or under my supervision, and that the same is true and correct to the best of my knowledge and belief.

Date Surveyed <i>July 21st 1960</i>
Registered Professional Engineer and/or Land Surveyor <i>James H. Brown</i>
Certificate No. <i>542</i>

0 330 660 990 1320 1650 1980 2310 2640 2000 1500 1000 500 0

INSTRUCTIONS FOR COMPLETION OF FORM C-128

1. Operator shall furnish and certify to the information called for in Section A.
2. Operator shall outline the dedicated acreage for *both* oil and gas wells on the plat in Section B.
3. A registered professional engineer or land surveyor registered in the State of New Mexico or approved by the Commission shall show on the plat the location of the well and certify this information in the space provided.
4. All distances shown on the plat must be from the outer boundaries of the Section.
5. If additional space is needed for listing owners and their respective interests as required in question 3 of Section A, please use space below.

OIL CONSERVATION COMMISSION		
ARTESIA DISTRICT OFFICE		
No. Copies Received	9	
DISTRIBUTION		
	NO. FURNISHED	
OPERATOR	4	
SANTA FE	1	
PRORATORION OFFICE		
STATE LAND OFFICE	1	
U. S. G. S.	2	
TRANSPORTER		
FILE	1	
BUREAU OF MINES		