

NO. OF COPIES RECEIVED	6
DISTRIBUTION	
SANTA FE	1
FILE	1
U.S.G.S.	2
LAND OFFICE	1
OPERATOR	1

NEW MEXICO OIL CONSERVATION COMMISSION

**RECEIVED**

**AUG 13 1974**

Form C-101  
Revised 1-1-65

5A. Indicate Type of Lease STATE <input checked="" type="checkbox"/> FEE <input type="checkbox"/>
5. State Oil & Gas Lease No. B-2071
7. Unit Agreement Name
8. Farm or Lease Name N. G. Phillips State
9. Well No. 2
10. Field and Pool, or Wildcat East Empire-Yates- <del>St. 56</del>
12. County Eddy
19. Proposed Depth
19A. Formation Seven Rivers
20. Rotary or C.T.
21. Elevations (Show whether DF, RT, etc.) 3652 G.I.
21A. Kind & Status Plug. Bond Active, Statewide
21B. Drilling Contractor Solt Well Service, Inc.
22. Approx. Date Work will start Aug. 14, 1974

**APPLICATION FOR PERMIT TO DRILL, DEEPEN, OR PLUG BACK**

1a. Type of Work **ARTESIAN OFFICE**

b. Type of Well DRILL ☐ DEEPEN ☐ PLUG BACK ☒  
OIL WELL ☒ GAS WELL ☐ SINGLE ZONE ☐ MULTIPLE ZONE ☐

2. Name of Operator  
John R. Gray ✓

3. Address of Operator  
P. O. Box 1031, Artesia, New Mexico 88210

4. Location of Well UNIT LETTER F LOCATED 2310 FEET FROM THE North LINE  
AND 2310 FEET FROM THE West LINE OF SEC. 27 TWP. 17S RGE. 28E NMPM

23.

PROPOSED CASING AND CEMENT PROGRAM

SIZE OF HOLE	SIZE OF CASING	WEIGHT PER FOOT	SETTING DEPTH	SACKS OF CEMENT	EST. TOP
10"	8 5/8"	24 lbs.	545	35	
8"	4 1/2"	9.5 lbs.	2006	75	

Well has been producing from Perfs 1952 - 76 in the Artesia pool.  
We propose to set wire line plug with 3 sacks cement on top at 1925', cutoff 4 1/2" and pull some. 25 sack plug at top of 4 1/2" stub, 25 sack plug at 975'. Run 4 1/2" back to 925' and cement on. Complete Seven Rivers formation.

IN ABOVE SPACE DESCRIBE PROPOSED PROGRAM: IF PROPOSAL IS TO DEEPEN OR PLUG BACK, GIVE DATA ON PRESENT PRODUCTIVE ZONE AND PROPOSED NEW PRODUCTIVE ZONE. GIVE BLOWOUT PREVENTER PROGRAM, IF ANY.

I hereby certify that the information above is true and complete to the best of my knowledge and belief.

Signed Clair Goodson Title Agent Date August 12, 1974.

(This space for State Use)

APPROVED BY W. A. Gressett TITLE OIL AND GAS INSPECTOR DATE AUG 14 1974

CONDITIONS OF APPROVAL, IF ANY:

NEW MEXICO OIL CONSERVATION COMMISSION  
WELL LOCATION AND ACREAGE DEDICATION PLAT

Form C-102  
Supersedes C-128  
Effective 1-1-65

All distances must be from the outer boundaries of the Section.

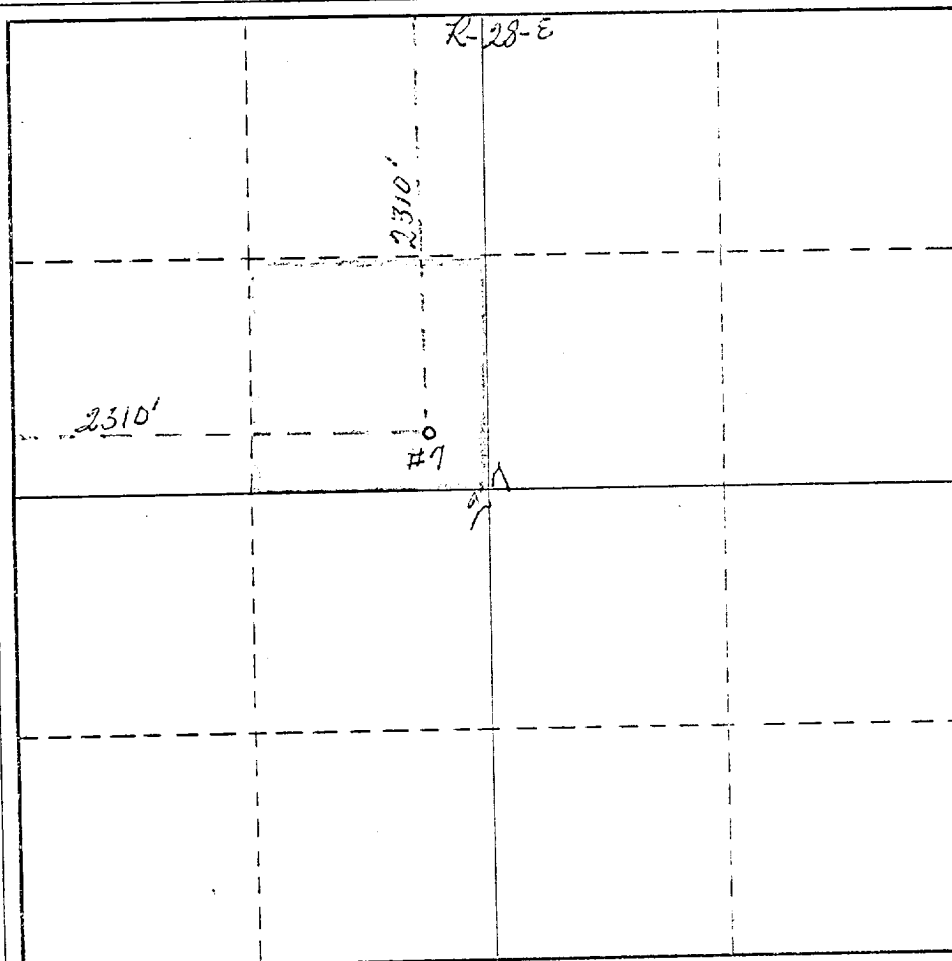
Operator <i>John R. Gray</i>			Lease <i>N. G. Phillips STATE</i>		Well No. <i>7</i>
Unit Letter <i>P</i>	Section <i>27</i>	Township <i>T-17-S</i>	Range <i>R-28-E</i>	County <i>Eddy</i>	
Actual Footage Location of Well: <i>2310</i> feet from the <i>North</i> line and <i>2310</i> feet from the <i>WEST</i> line					
Ground Level Elev. <i>5152</i>	Producing Formation <i>SR</i>	Pool <i>Und. Comm. Type SR</i>		Dedicated Acreage: <i>40</i> Acres	

1. Outline the acreage dedicated to the subject well by colored pencil or hachure marks on the plat below.
2. If more than one lease is dedicated to the well, outline each and identify the ownership thereof (both as to working interest and royalty).
3. If more than one lease of different ownership is dedicated to the well, have the interests of all owners been consolidated by communitization, unitization, force-pooling, etc?

☐ Yes ☐ No If answer is "yes," type of consolidation \_\_\_\_\_

If answer is "no," list the owners and tract descriptions which have actually been consolidated. (Use reverse side of this form if necessary.) \_\_\_\_\_

No allowable will be assigned to the well until all interests have been consolidated (by communitization, unitization, forced-pooling, or otherwise) or until a non-standard unit, eliminating such interests, has been approved by the Commission.



CERTIFICATION

I hereby certify that the information contained herein is true and complete to the best of my knowledge and belief.

Name *Alvin Branson*

Position *Agent*

Company *John R. Gray*

Date *August 13, 1974*

I hereby certify that the well location shown on this plat was plotted from field notes of actual surveys made by me or under my supervision, and that the same is true and correct to the best of my knowledge and belief.

Date Surveyed \_\_\_\_\_

Registered Professional Engineer and/or Land Surveyor \_\_\_\_\_

Certificate No. \_\_\_\_\_

T  
17  
S