

fine ✓
USSS
State Land

LOCATION AND ACREAGE DEDICATION AT

Superior (C-130)
Effective 1-4-66

All distances must be from the outer boundaries of the Section

Operator COLLIER & COLLIER		Lease Gillespie State		Well No. 15
Unit Lot B	Section 27	Township 17 South	Range 28 East	County Eddy

Actual Well Location of Well:

990	feet from the North	line and 1650	feet from the East	line
Ground Level Elev. 3596.0	Locating Information Grayburg	Pool Red Lake	Dedicated Acreage 40 acres	

1. Outline the acreage dedicated to the subject well by colored pencil or hatchure marks on the plat below.
2. If more than one lease is dedicated to the well, outline each and identify the ownership thereof (both as to working interest and royalty).
3. If more than one lease of different ownership is dedicated to the well, have the interests of all owners been consolidated by communitization, unitization, force-pooling, etc?

RECEIVED

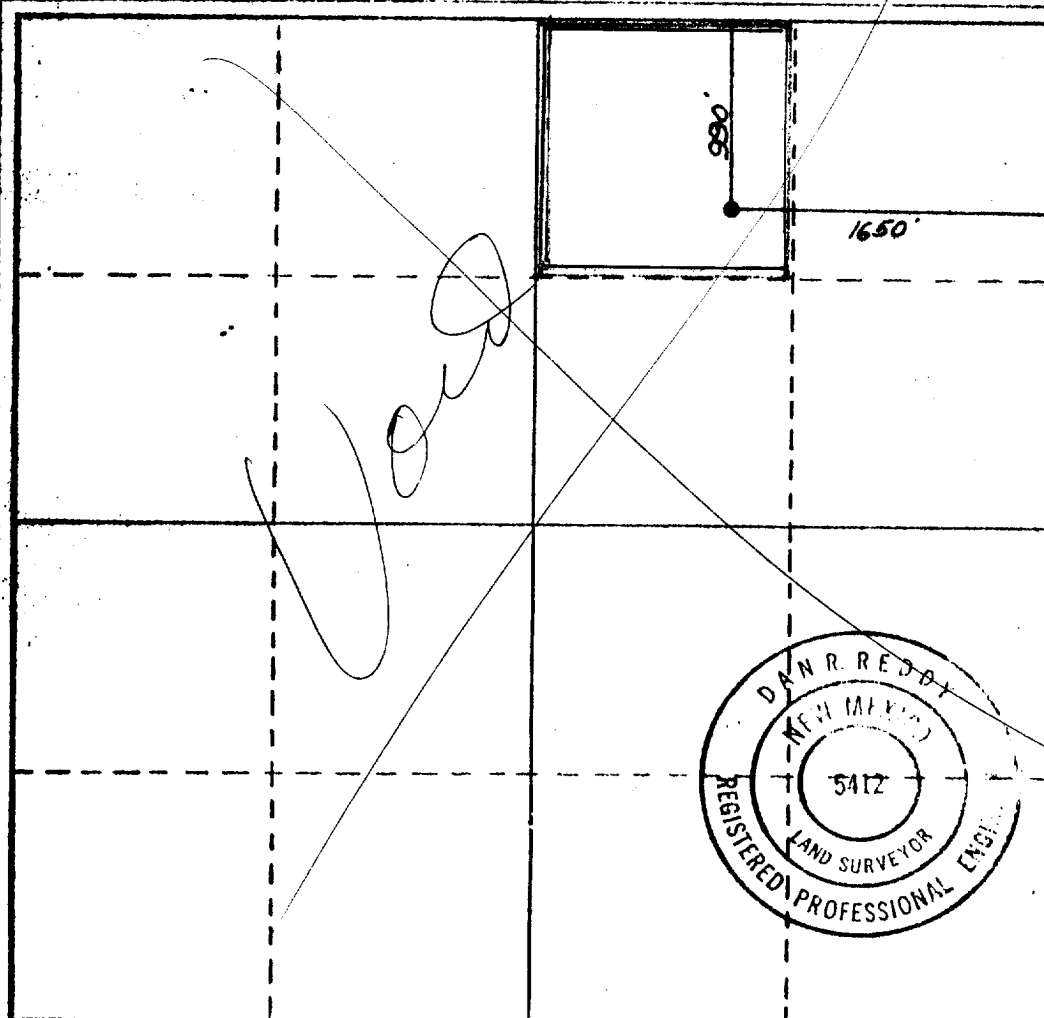
SEP 17 1979

O. C. C.
ARTESIA, OFFICE

☐ Yes ☐ No If answer is "yes," type of consolidation _____

If answer is "no," list the owners and tract descriptions which have actually been consolidated. (Use reverse side of this form if necessary.) _____

No allowable will be assigned to the well until all interests have been consolidated (by communitization, unitization, forced-pooling, or otherwise) or until a non-standard unit, eliminating such interests, has been approved by the Commission.



CERTIFICATION

I hereby certify that the information contained herein is true and complete to the best of my knowledge and belief.

Cheri Monk

Name
Cheri Monk

Position
Secretary

Company
Collier & Collier

Date
7/6/79

I hereby certify that the well location shown on this plat was plotted from field notes of actual surveys made by me or under my supervision, and that the same is true and correct to the best of my knowledge and belief.

Date Surveyed

3/21/78

Registered Professional Engineer
and/or Land Surveyor

Dan R. Reddy

Certificate No.

N.M. PE&LS #5412

0 320 640 960 1280 1600 1920 2240 2560 2880 3200 3520 3840 4160 4480 4800 5120 5440 5760 6080 6400