

NEW MEXICO OIL CONSERVATION COMMISSION
Santa Fe, New Mexico

Form G-101
JAN 22 1960
Revised (12/1/55)

NOTICE OF INTENTION TO DRILL

ARTESIAN OFFICE

Notice must be given to the District Office of the Oil Conservation Commission and approval obtained before drilling or recompletion begins. If changes in the proposed plan are considered advisable, a copy of this notice showing such changes will be returned to the sender. Submit this notice in QUINTUPPLICATE. One copy will be returned following approval. See additional instructions in Rules and Regulations of the Commission. If State Land submit 6 Copies Attach Form G-128 in triplicate to first 3 copies of form G-101

MIDLAND, TEXAS

JANUARY 21, 1960

(Place)

(Date)

OIL CONSERVATION COMMISSION
SANTA FE, NEW MEXICO

Gentlemen:

You are hereby notified that it is our intention to commence the Drilling of a well to be known as

B. B. SMITH, INC.

(Company or Operator)

DELHI-STATE

(Lease)

1

N

Well No.

in

(Unit)

The well is

located 2310 feet from the

WEST

line and

330

feet from the

SOUTH

line of Section

27

T

17S

R

30E

28E, NMPM.

(GIVE LOCATION FROM SECTION LINE)

Red Lake

Pool,

Caddy

County

If State Land the Oil and Gas Lease is No.

E-135

If patented land the owner is

Address

We propose to drill well with drilling equipment as follows:

CABLE TOOLS

FROM SURFACE TO 2200'

The status of plugging bond is

APPROVED.

Drilling Contractor

We intend to complete this well in the

GRAYBURG FORMATION.

formation at an approximate depth of

2200'

feet.

CASING PROGRAM

We propose to use the following strings of Casing and to cement them as indicated:

Size of Hole	Size of Casing	Weight per Foot	New or Second Hand	Depth	Sacks Cement
12"	10-3/4"	40#	SECOND HAND	130'	SET
10"	8-5/8"	32#	SECOND HAND	450'	50
8"	5-1/2"	15.5#	NEW	2200'	100

If changes in the above plans become advisable we will notify you immediately.

ADDITIONAL INFORMATION (If recompletion give full details of proposed plan of work.)

JAN 22 1960

Approved _____, 19_____
Except as follows:

OIL CONSERVATION COMMISSION

By M. L. Armstrong

OIL AND GAS INSPECTOR

Sincerely yours,

B. B. SMITH, INC.

(Company or Operator)

By D. B. Baxter

Position GEOLOGIST

Send Communications regarding well to

Name B. B. SMITH, INC.

Address P. O. Box 5103, MIDLAND, TEXAS

NEW MEXICO OIL CONSERVATION COMMISSION
WELL LOCATION AND ACREAGE DEDICATION PLAT RECEIVED

FORM C-128
 Revised 5/1/57

SEE INSTRUCTIONS FOR COMPLETING THIS FORM ON THE REVERSE SIDE

SECTION A

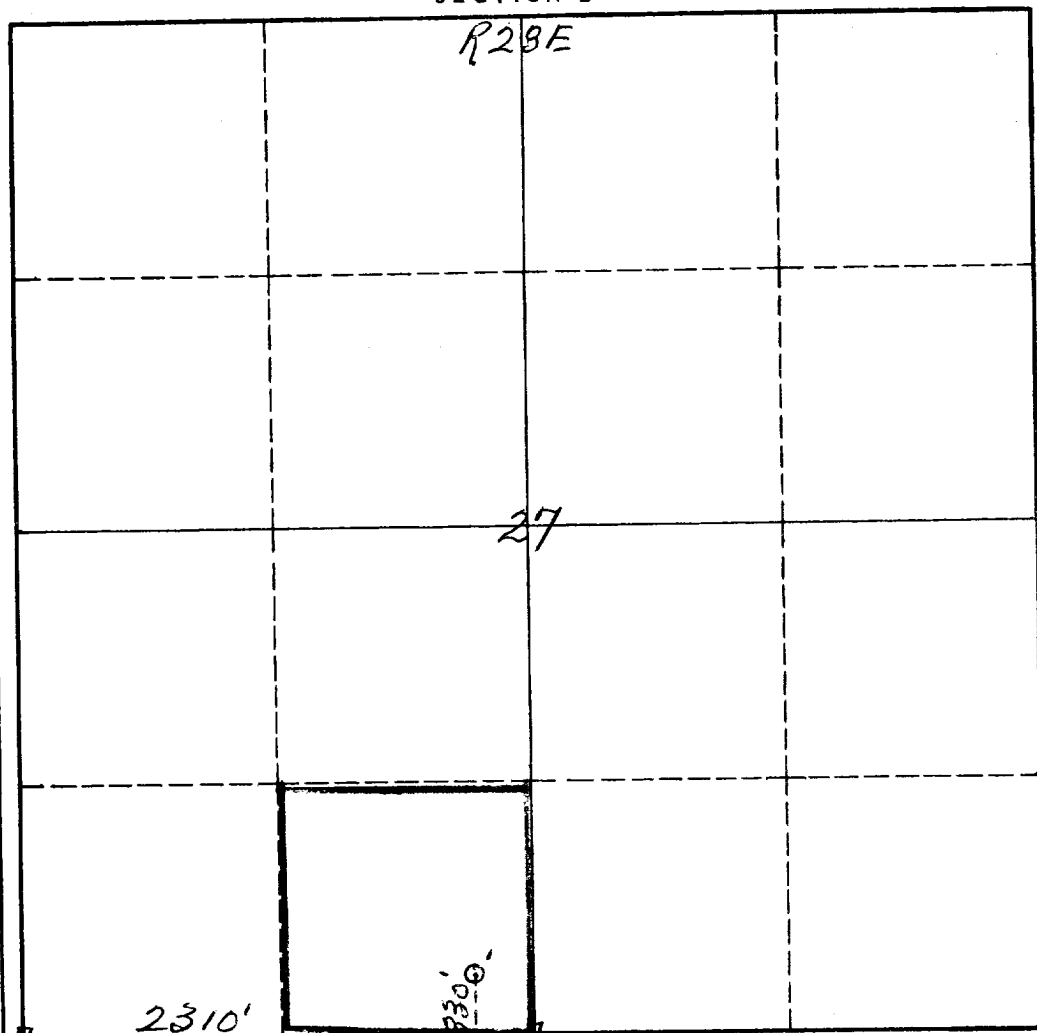
JAN 22 1960

Operator B. B. SMITH, INC.		Lease DELHI-STATE		Well No. 1	
Unit Letter N	Section 27	Township 17S	Range 28E	County EDDY	ARTESIA, OFFICE
Actual Footage Location of Well: 330 feet from the South line and 2310 feet from the West line					
Ground Level Elev. 3675	Producing Formation GRAYBURG		Pool RED LAKE	Dedicated Acreage: 40 Acres	

1. Is the Operator the only owner in the dedicated acreage outlined on the plat below? YES X NO ____ . ("Owner" means the person who has the right to drill into and to produce from any pool and to appropriate the production either for himself or for himself and another. (65-3-29 (e) NMSA 1935 Comp.)
2. If the answer to question one is "no," have the interests of all the owners been consolidated by communitization agreement or otherwise? YES ____ NO ____ . If answer is "yes," Type of Consolidation _____
3. If the answer to question two is "no," list all the owners and their respective interests below:

Owner	Land Description

SECTION B



CERTIFICATION

I hereby certify that the information in SECTION A above is true and complete to the best of my knowledge and belief.

Name
D. B. Batten
 Position
GEOLOGIST
 Company
B. B. SMITH, INC.
 Date
1-21-60

I hereby certify that the well location shown on the plat in SECTION B was plotted from field notes of actual surveys made by me or under my supervision, and that the same is true and correct to the best of my knowledge and belief.

Date Surveyed
January 22, 1960
 Registered Professional Engineer
 and/or Land Surveyor
James H. Bunn
 Certificate No.
542

0 330 660 990 1320 1650 1980 2310 2640 2000 1500 1000 500 0

INSTRUCTIONS FOR COMPLETION OF FORM C-128

1. Operator shall furnish and certify to the information called for in Section A.
2. Operator shall outline the dedicated acreage for *both* oil and gas wells on the plat in Section B.
3. A registered professional engineer or land surveyor registered in the State of New Mexico or approved by the Commission shall show on the plat the location of the well and certify this information in the space provided.
4. All distances shown on the plat must be from the outer boundaries of the Section.
5. If additional space is needed for listing owners and their respective interests as required in question 3 of Section A, please use space below.

OIL CONSERVATION COMMISSION		
ARTESIA DISTRICT OFFICE		
No. Copies Received <u>8</u>		
DISTRIBUTION		
	NO. FURNISHED	
OPERATOR	<u>2</u>	
SANTA FE	<u>1</u>	
REGISTRATION OFFICE		
STATE LAND OFFICE	<u>1</u>	
U. S. G. S.	<u>2</u>	
TRANSPORTER		
FILE	<u>1</u>	✓
BUREAU OF MINES		