

NEW MEXICO OIL CONSERVATION COMMISSION
WELL LOCATION AND ACREAGE DEDICATION PLAT

FORM C-128
 Revised 5/1/57

SEE INSTRUCTIONS FOR COMPLETING THIS FORM ON THE REVERSE SIDE

SECTION A

FEB 26 1960

Operator Pan American Petroleum Corp			Lease State BG		Well No. J. C. C-2
Unit Letter L	Section 31	Township 17 South	Range 28 East	County Eddy	ARTESIA, OFFICE

Actual Footage Location of Well:

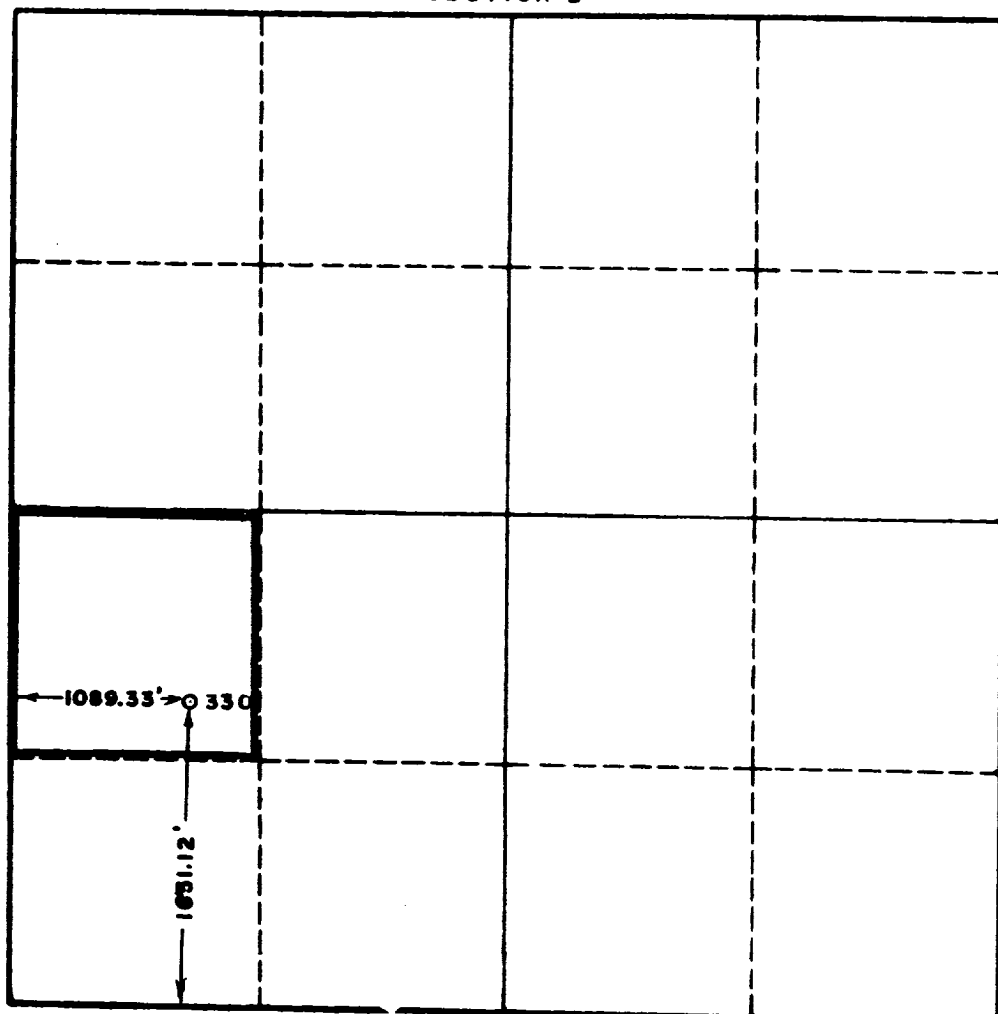
1089.33 feet from the **West** line and **1651.12** feet from the **South** line

Ground Level Elev. Surface later	Producing Formation Alb	Pool Explor. Alb Undersig.	Dedicated Acreage: 43.67 Acres
--	-----------------------------------	--------------------------------------	--

1. Is the Operator the only owner in the dedicated acreage outlined on the plat below? YES ☒ NO ☐ ("Owner" means the person who has the right to drill into and to produce from any pool and to appropriate the production either for himself or for himself and another. (65-3-29 (e) NMSA 1935 Comp.)
2. If the answer to question one is "no," have the interests of all the owners been consolidated by communitization agreement or otherwise? YES ☐ NO ☐ If answer is "yes," Type of Consolidation _____
3. If the answer to question two is "no," list all the owners and their respective interests below:

Owner	Land Description

SECTION B



CERTIFICATION

I hereby certify that the information in SECTION A above is true and complete to the best of my knowledge and belief.

Original Signed by

Name **J. W. BROWN**

Position

Area Superintendent
Company

Pan American Petroleum Corp.
Date

2-26-60

I hereby certify that the well location shown on the plat in SECTION B was plotted from field notes of actual surveys made by me or under my supervision, and that the same is true and correct to the best of my knowledge and belief.

Feb. 20, 1960

Date Surveyed

Registered Professional Engineer and/or Land Surveyor, **JOHN W. WEST**

John W. West

Certificate No.
N.M. - P.E. & L.S. NO. 676

JOHN W. WEST ENGINEERING COMPANY

412 NORTH DAL PASO
HOBBS, NEW MEXICO

February 20, 1960

RECEIVED

FEB 26 1960

D. C. B.
ARTESIA, OFFICE

Pan American Petroleum Corp.
P. O. Box 68,
Hobbs, New Mexico.

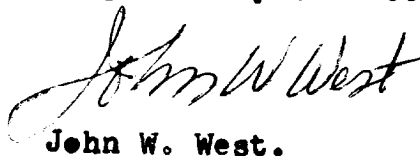
Gentlemen:

On February 20, 1960, a survey was made to locate your State BJ Well No. 2 at a point 1958.35 feet from the east line, and 1650 feet from the south line, and your State BM Well No. 1 at a point 2387.22 feet from the west line, and 1650 feet from the south line, and your State BE Well No. 2 at a point 1089.33 feet from the west line, and 1651.12 feet from the south line, all in Sec. 31, Twp 17 S, Rng 28 E, N.M.P.M., Eddy County, New Mexico.

Beginning at a point marked by a 2 inch iron pipe with a brass plate inscribed as the common corner of Sec. 31, and 32, Twp 17 S, Rng 28 E, and Sec 5, and 6, Twp 18 S, Rng 28 E, N.M.P.M.; thence chaining S 88° 55' W, along the south boundary line of said Sec. 31 a distance of 1958.35 feet to a point marked by a 2 inch wooden hub, from which the south quarter corner of said Sec 31, common to the north quarter corner of Sec 6, Twp 18 S, Rng 28 E, marked by a 1 inch iron pipe with brass plate, bears S 88° 55' W, a distance of 642.71 feet; thence N 0° 34' W, a distance of 1650 feet to the point of location of your State BJ Well No. 2; thence S 88° 55' W, a distance of 972.71 feet to the point of location of your Stat BM Well No. 1; Thence S 88° 58' W, a distance of 1297.89 feet to the point of location of your B E Well No. 2; thence S 88° 55' W, a distance of 1089.33 feet to a point marked in the west boundary line of said Sec. 31 by a 2 inch wooden hub; thence S 0° 18' E along the west boundary line of said Sec 31 a distance of 1651.12 feet to a point marked by a 2 inch iron pipe with a brass plate inscribed as the southwest corner of said Sec 31.

I hereby certify that the foregoing survey was made in the field under my supervision and that the same is true and correct to the best of my knowledge and belief.

Respectfully submitted,



John W. West.

OIL CONSERVATION COMMISSION		
ALBUQUERQUE OFFICE		
No. of Copies Made 6		
DISTRIBUTION		
	COPIES FURNISHED	
GRATOR	1	
SANTA FE	1	
PROBATION OFFICE		
STATE LAND OFFICE	1	
U. S. G. S.	2	
TRANSPORTER		
FILE	1	1
BUREAU OF MINES		