

NEW MEXICO OIL CONSERVATION COMMISSION

RECEIVED FORM C-103
(Rev 3-55)

MISCELLANEOUS REPORTS ON WELLS MAR 28 1960

(Submit to appropriate District Office as per Commission Rule 1106)

Name of Company Pan American Petroleum Corporation		Address Box 68, Hobbs, New Mexico				
Lease State "RM"	Well No. 1	Unit Letter K	Section 31	Township 17-S	Range 28-E	
Date Work Performed 3-19 thru 3-23-60	Pool Empire Abo			County Eddy		
THIS IS A REPORT OF: (Check appropriate block)						
<input checked="" type="checkbox"/> Beginning Drilling Operations		<input checked="" type="checkbox"/> Casing Test and Cement Job		<input type="checkbox"/> Other (Explain):		
<input type="checkbox"/> Plugging		<input type="checkbox"/> Remedial Work				

Detailed account of work done, nature and quantity of materials used, and results obtained.

Spud 11" hole 3-19-60. On 3-22-60 8 5/8" OD 22.7# Armo Casing was run and set at 1275' with 750 Sx. cement, circulated. After WOC 24 hours tested casing with 600 PSI for 30 minutes with no loss in pressure. Reduced hole to 7 7/8" at 1275' and resumed drilling operations.

Witnessed by R. J. Tweedy	Position Field Foreman	Company Pan American Petroleum Corporation
-------------------------------------	----------------------------------	------------------------------------------------------

FILL IN BELOW FOR REMEDIAL WORK REPORTS ONLY

ORIGINAL WELL DATA

D F Elev.	T D	P B T D	Producing Interval	Completion Date
Tubing Diameter	Tubing Depth	Oil String Diameter	Oil String Depth	
Perforated Interval(s)				
Open Hole Interval		Producing Formation(s)		

RESULTS OF WORKOVER

Test	Date of Test	Oil Production BPD	Gas Production MCFPD	Water Production BPD	GOR Cubic feet/Bbl	Gas Well Potential MCFPD
Before Workover						
After Workover						

OIL CONSERVATION COMMISSION		I hereby certify that the information given above is true and complete to the best of my knowledge.	
Approved by <i>M. L. Armstrong</i>	Name Original Signed by J. W. BROWN		
Title OIL AND GAS INSPECTOR	Position Area Superintendent		
Date MAR 28 1960	Company Pan American Petroleum Corporation		

2-21-60

OIL CONSERVATION COMMISSION		
ARTESIA DISTRICT OFFICE		
No. Copies Received	3	
DISTRIBUTION		
	NO. FURNISHED	
Commission	1	
SANTA FE	1	
PROMOTION OFFICE		
STATE LANDS OFFICE		
U. S. G. S.		
TRANSPORTER		
FILE	1	
BUREAU OF MINES		

NEW MEXICO OIL CONSERVATION COMMISSION
Santa Fe, New Mexico

Form C-101
Revised 12/1/55
30-015-01651

NOTICE OF INTENTION TO DRILL

Notice must be given to the District Office of the Oil Conservation Commission and approval obtained before drilling or recompletion begins. If changes in the proposed plan are considered advisable, a copy of this notice showing such changes will be returned to the sender. Submit this notice in **QUINTUPLICATE**. One copy will be returned following approval. See additional instructions in Rules and Regulations of the Commission. If State Land submit 6 Copies Attach Form C-128 in triplicate to first 3 copies of form C-101

Hobbs, New Mexico

(Place)

February 23, 1960

(Date)

OIL CONSERVATION COMMISSION
SANTA FE, NEW MEXICO

Gentlemen:

You are hereby notified that it is our intention to commence the Drilling of a well to be known as
Pan American Petroleum Corporation

State "NM"

(Company or Operator)

(Lease)

Well No. **1**, in **K** (Unit) The well is

located **2387.22** feet from the **West** line and **1650** feet from the **South**

(GIVE LOCATION FROM SECTION LINE)

Line of Section **31**, T. **17-S**, R. **20-E**, NMPM.

Undesignated Pool, **Hoby** County

If State Land the Oil and Gas Lease is No. **B-7966**

If patented land the owner is

Address

We propose to drill well with drilling equipment as follows: **Rotary tools from surface to total depth**

The status of plugging bond is **Blanket bond on file with commission**

Drilling Contractor **Lee Drilling Company**

**1007 Philtner Building,
Tulsa, Oklahoma**

We intend to complete this well in the **Abc** formation at an approximate depth of **6500** feet.

CASING PROGRAM

We propose to use the following strings of Casing and to cement them as indicated:

Size of Hole	Size of Casing	Weight per Foot	New or Second Hand	Depth	Sacks Cement
11"	8-5/8"	22.7	New	1300	Circulated
7-7/8"	4-1/2"	9.5	New	6500	850 sz.

If changes in the above plans become advisable we will notify you immediately.

ADDITIONAL INFORMATION (If recompletion give full details of proposed plan of work.)

FEB 25 1960

Approved....., 19.....
Except as follows:

OIL CONSERVATION COMMISSION

By *M. L. Armstrong*

Sincerely yours,

Pan American Petroleum Corporation

Original Signed (Company or Operator)

By **J. W. BROWN**

Position **Area Superintendent**

Send Communications regarding well to

Name **J. W. Brown**

Address **Box 68 - Hobbs, New Mexico**

NEW MEXICO OIL CONSERVATION COMMISSION
WELL LOCATION AND ACREAGE DEDICATION PLAT RECEIVED

FORM C-128
 Revised 5/1/57

SEE INSTRUCTIONS FOR COMPLETING THIS FORM ON THE REVERSE SIDE

SECTION A

FEB 26 1960

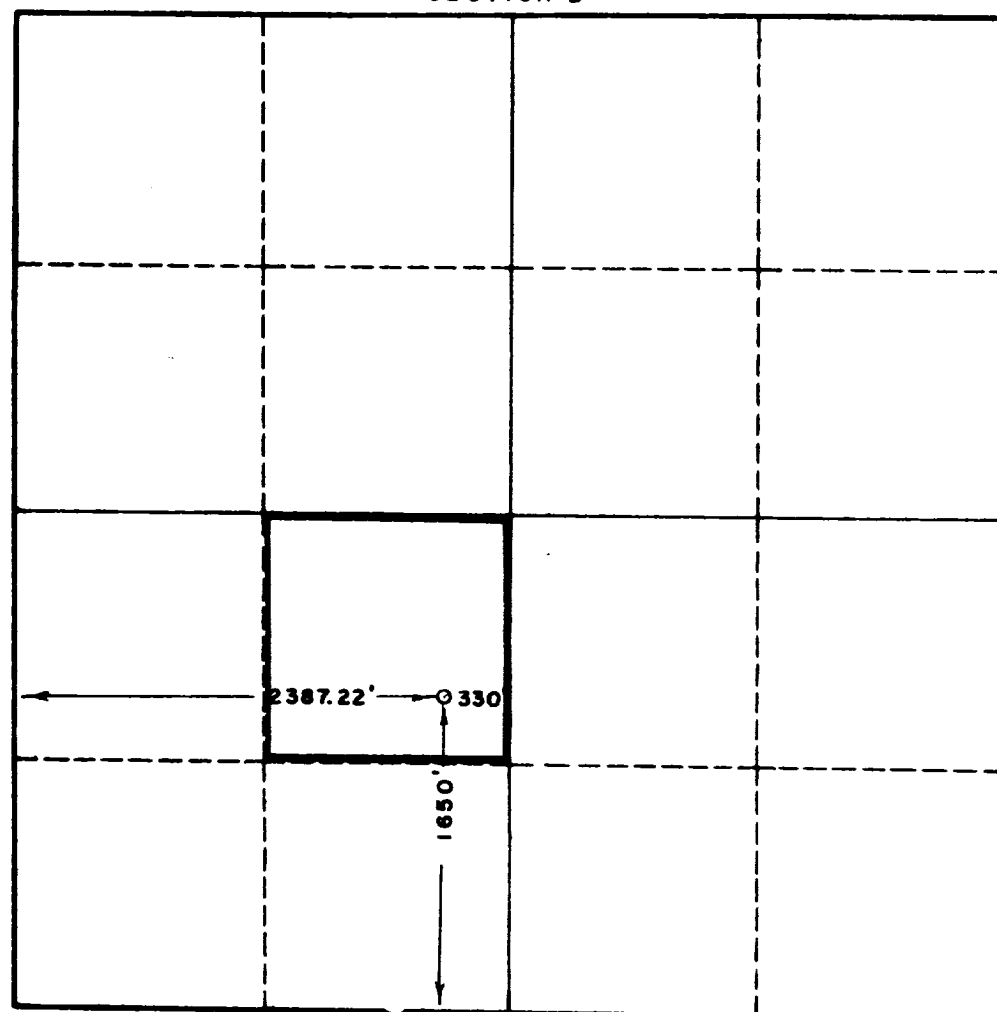
Operator Pan American Petroleum Corp		Lease State BM		Well No. O. C. C. 1	
Unit Letter K	Section 31	Township 17 South	Range 28 East	County Eddy	

Actual Footage Location of Well: 2387.22 feet from the West line and 1650 feet from the South line					
Ground Level Elev. Spanish Lake	Producing Formation Alto	Pool Empire Alto	Dedicated Acreage: 10 Acres		

1. Is the Operator the only owner in the dedicated acreage outlined on the plat below? YES ☒ NO ☐ ("Owner" means the person who has the right to drill into and to produce from any pool and to appropriate the production either for himself or for himself and another. (65-3-29 (e) NMSA 1935 Comp.)
2. If the answer to question one is "no," have the interests of all the owners been consolidated by communization agreement or otherwise? YES ☐ NO ☐ If answer is "yes," Type of Consolidation _____
3. If the answer to question two is "no," list all the owners and their respective interests below:

Owner	Land Description

SECTION B



CERTIFICATION

I hereby certify that the information in SECTION A above is true and complete to the best of my knowledge and belief.

Name
 Original Signed by
J. W. BROWN
 Position
Area Superintendent
 Company
Pan American Petroleum Corp.
 Date
2-23-60

I hereby certify that the well location shown on the plat in SECTION B was plotted from field notes of actual surveys made by me or under my supervision, and that the same is true and correct to the best of my knowledge and belief.

Feb. 20, 1960

Date Surveyed
 Registered Professional Engineer and/or Land Surveyor, **JOHN W. WEST**

 Certificate No.
N. M. - P. E. & L. S. NO. 676

0 330 660 990 1320 1650 1980 2310 2640 2000 1500 1000 500 0

JOHN W. WEST ENGINEERING COMPANY

412 NORTH DAL PASO
HOBBS, NEW MEXICO

February 20, 1960

RECEIVED

FEB 26 1960

D. C. C.
ARTESIA, OFFICE

Pan American Petroleum Corp.
P. O. Box 68,
Hobbs, New Mexico.

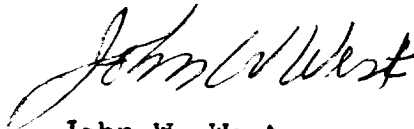
Gentlemen:

On February 20, 1960, a survey was made to locate your State BJ Well No. 2 at a point 1958.35 feet from the east line, and 1650 feet from the south line, and your State BM Well No. 1 at a point 2387.22 feet from the west line, and 1650 feet from the south line, and your State BE Well No. 2 at a point 1089.33 feet from the west line, and 1651.12 feet from the south line, all in Sec. 31, Twp 17 S, Rng 28 E, N.M.P.M., Eddy County, New Mexico.

Beginning at a point marked by a 2 inch iron pipe with a brass plate inscribed as the common corner of Sec. 31, and 32, Twp 17 S, Rng 28 E, and Sec 5, and 6, Twp 18 S, Rng 28 E, N.M.P.M.; thence chaining S 88° 55' W, along the south boundary line of said Sec. 31 a distance of 1958.35 feet to a point marked by a 2 inch wooden hub, from which the south quarter corner of said Sec 31, common to the north quarter corner of Sec 6, Twp 18 S, Rng 28 E, marked by a 1 inch iron pipe with brass plate, bears S 88° 55' W, a distance of 642.71 feet; thence N 0° 34' W, a distance of 1650 feet to the point of location of your State BJ Well No. 2; thence S 88° 55' W, a distance of 972.71 feet to the point of location of your Stat BM Well No. 1; Thence S 88° 58' W, a distance of 1297.89 feet to the point of location of your B E Well No. 2; thence S 88° 55' W, a distance of 1089.33 feet to a point marked in the west boundary line of said Sec. 31 by a 2 inch wooden hub; thence S 0° 18' E along the west boundary line of said Sec 31 a distance of 1651.12 feet to a point marked by a 2 inch iron pipe with a brass plate inscribed as the southwest corner of said Sec 31.

I hereby certify that the foregoing survey was made in the field under my supervision and that the same is true and correct to the best of my knowledge and belief.

Respectfully submitted,



John W. West.

OIL CONSERVATION COMMISSION		
ARTESIA DISTRICT OFFICE		
No. Copies Received	6	
DISTRIBUTION		
	NO. FURNISHED	
OPERATOR	1	
SANTA FE	1	
PRORATION OFFICE		
STATE LAND OFFICE	1	
U. S. G. S.	2	
TRANSPORTER		
FILE		✓
BUREAU OF MINES	1	