

## NEW MEXICO OIL CONSERVATION COMMISSION

FORM C-128  
Revised 5/1/57

## WELL LOCATION AND ACREAGE DEDICATION

SEE INSTRUCTIONS FOR COMPLETING THIS FORM ON THE REVERSE SIDE

## SECTION A

Operator

PAN AMERICAN PET. CORP.

Lease

STATE "CC"

Well No.

1

Unit Letter

G

Section

31

Township

17S

Range

28E

County

EDDY

Actual Footage Location of Well:

2288.04

feet from the

NORTH

line and

1625.15

feet from the

EAST

line

Ground Level Elev.

Not yet available

Producing Formation

Abo

Pool

Empire Abo

Dedicated Acreage:

40

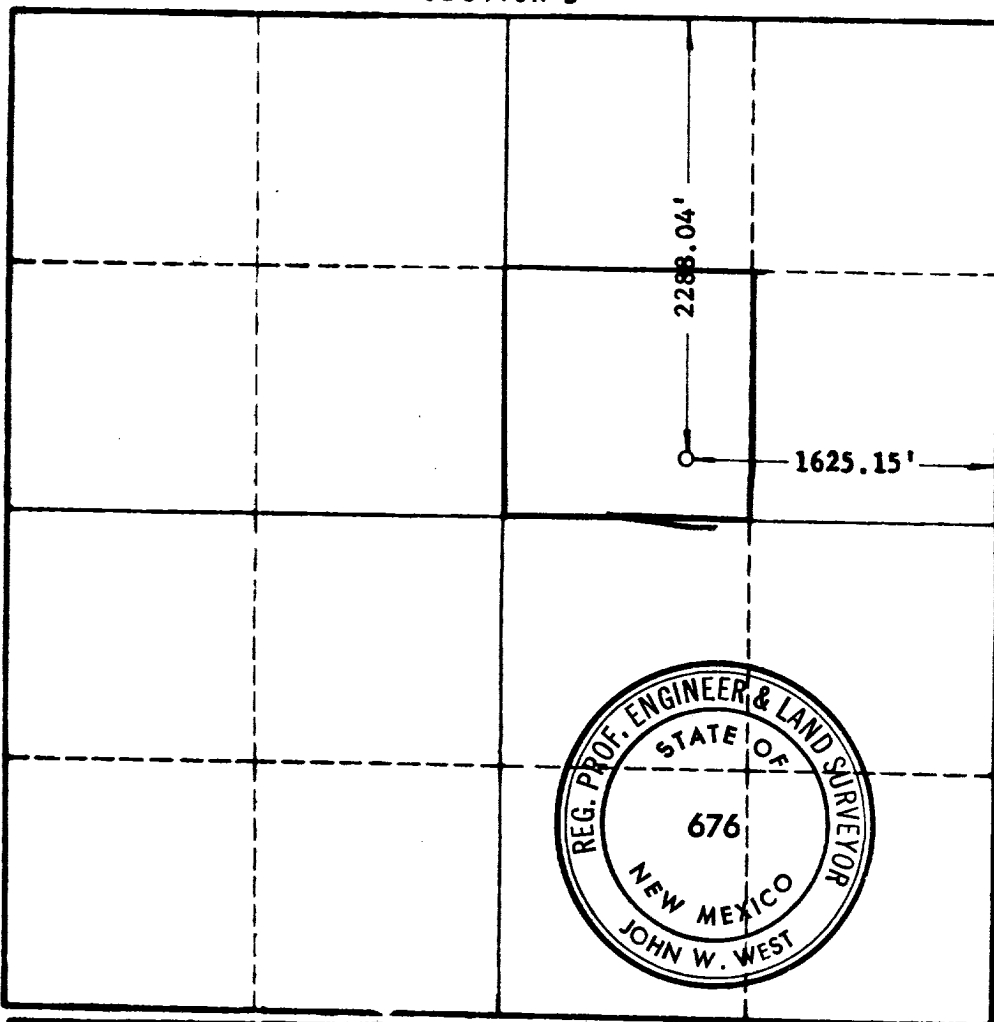
Acres

1. Is the Operator the only owner in the dedicated acreage outlined on the plat below? YES ☒ NO ☐ ("Owner" means the person who has the right to drill into and to produce from any pool and to appropriate the production either for himself or for himself and another. (65-3-29 (e) NMSA 1935 Comp.)
2. If the answer to question one is "no," have the interests of all the owners been consolidated by communitization agreement or otherwise? YES ☐ NO ☐ If answer is "yes," Type of Consolidation \_\_\_\_\_
3. If the answer to question two is "no," list all the owners and their respective interests below:

Owner

Land Description

## SECTION B



## CERTIFICATION

I hereby certify that the information in SECTION A above is true and complete to the best of my knowledge and belief.

Name  
Original Signed by  
J. W. BROWN

Position

Area Superintendent

Company

Pan American Petroleum Corp.

Date

July 14, 1960

I hereby certify that the well location shown on the plat in SECTION B was plotted from field notes of actual surveys made by me or under my supervision, and that the same is true and correct to the best of my knowledge and belief.

Date Surveyed

7/1/60

Registered Professional Engineer  
and/or Land Surveyor, JOHN W. WEST

*John W. West*  
Certificate No.

N.M. - P.E. &amp; L.S. NO. 676

0 330 660 990 1320 1650 1980 2310 2640 2000 1500 1000 500 0

RECEIVED

DIAL 3-6770

JOHN W. WEST ENGINEERING COMPANY  
412 NORTH DAL PASS  
HOBBS, NEW MEXICO

JUL 18 1960

D. C. C.  
AMERICAN OFFICE

JULY 12, 1960

PAN AMERICAN PETROLEUM CORP.  
P.O. Box 68  
HOBBS, NEW MEXICO


GENTLEMEN:

ON JULY 1, 1960, A SURVEY WAS MADE TO LOCATE YOUR STATE "CC" WELL No. 1 AT A POINT 2288.04 FEET FROM THE NORTH LINE AND 1625.15 FEET FROM THE EAST LINE OF SECTION 31, TOWNSHIP 17 SOUTH, RANGE 28 EAST, N.M.P.M., EDDY COUNTY, NEW MEXICO.

A FLAG WAS SET UP OVER THE USGLO MARKER SET FOR THE NORTHEAST CORNER OF SECTION 31 AND THE TRANSIT WAS SET UP OVER THE USGLO MARKER SET FOR THE EAST QUARTER CORNER OF SAID SECTION. THENCE CHAINING FROM THE TRANSIT  $N0^{\circ}50'W$  ALONG THE EAST BOUNDARY LINE OF SAID SECTION A DISTANCE OF 330 FEET AND SETTING A HUB WITH TACK. THENCE CHAINING  $S89^{\circ}18'W$  FROM SAID HUB WITH TACK A DISTANCE OF 1625.15 FEET TO THE LOCATION OF YOUR STATE "CC" WELL No. 1. AS A CHECK ON OUR SURVEY WE CHAINED  $N0^{\circ}50'W$  FROM SAID LOCATION A DISTANCE OF 2288.04 FEET AND  $N89^{\circ}41'E$  A DISTANCE OF 1625 FEET CLOSING WITHIN 0.15 FEET ON THE NORTHEAST CORNER OF SAID SECTION.

I HEREBY CERTIFY THAT THE FOREGOING SURVEY WAS MADE IN THE FIELD UNDER MY SUPERVISION AND THAT THE SAME IS TRUE AND CORRECT TO THE BEST OF MY KNOWLEDGE AND BELIEF.

RESPECTFULLY SUBMITTED,

  
JOHN W. WEST

OIL CONSERVATION COMMISSION  
ARTESIA DISTRICT OFFICE

No. Copies Received

6

DISTRIBUTION

	NO. FURNISHED	
OPERATOR	1	
LAND FE	1	
REGISTRATION OFFICE		
STATE LAND OFFICE	1	
U. S. G. S.	2	
TRANSPORTER		
FILE	1	—
BUREAU OF MINES		