

NEW MEXICO OIL CONSERVATION COMMISSION  
Santa Fe, New Mexico

Form C-101  
Revised (12/1/55)  
RECEIVED  
30-015-01661

NOTICE OF INTENTION TO DRILL MAR 14 1960

Notice must be given to the District Office of the Oil Conservation Commission and approval obtained before drilling or recompletion begins. If changes in the proposed plan are considered advisable, a copy of this notice showing such changes will be returned to the sender. Submit this notice in QUINTUPLICATE. One copy will be returned following approval. See additional instructions in Rules and Regulations of the Commission. If State Land submit 6 Copies Attach Form C-128 in triplicate to first 3 copies of form C-101

Artesia, New Mexico  
(Place)

3-12-60  
(Date)

OIL CONSERVATION COMMISSION  
SANTA FE, NEW MEXICO

Gentlemen:

You are hereby notified that it is our intention to commence the Drilling of a well to be known as

Hondo-Western-Yates

(Company, or Operator)

State 'A'  
(Lease)

Well No. 7, in K The well is  
(Unit)

located 2310 feet from the West line and 1650 feet from the

South line of Section 32, T. 17-S, R. 28-E, NMPM.

(GIVE LOCATION FROM SECTION LINE) Empire Abo Undesignated Pool, Eddy County

If State Land the Oil and Gas Lease is No. 647

If patented land the owner is

Address

We propose to drill well with drilling equipment as follows:

Rotary

The status of plugging bond is

Blanket

Drilling Contractor

Yates Drilling Company

Artesia, New Mexico

We intend to complete this well in the Abo

formation at an approximate depth of 6400 feet.

CASING PROGRAM

We propose to use the following strings of Casing and to cement them as indicated:

Size of Hole	Size of Casing	Weight per Foot	New or Second Hand	Depth	Sacks Cement
11	8-5/8	24	New	1000	350
7-7/8	5-1/2	14	New	6400	450

If changes in the above plans become advisable we will notify you immediately.

ADDITIONAL INFORMATION (If recompletion give full details of proposed plan of work.)

MAR 14 1960

Approved \_\_\_\_\_, 19\_\_\_\_  
Except as follows:

Sincerely yours,

Hondo Oil & Gas Company  
(Company or Operator)

By *A. J. Deans*

Position Dist. Prod. Supt.

Send Communications regarding well to

Name A. J. Deans

Address Box 125, Artesia, New Mexico

OIL CONSERVATION COMMISSION

By *M. H. Armstrong*

RECEIVED

**NEW MEXICO OIL CONSERVATION COMMISSION**  
**WELL LOCATION AND ACREAGE DEDICATION PLAT**

FORM C-128  
 Revised 5/1/57

MAR 14 1960

SEE INSTRUCTIONS FOR COMPLETING THIS FORM ON THE REVERSE SIDE.

## SECTION A

ARTESIA, OFFICE

Operator <b>Hondo-Western-Yates</b>			Lease <b>State "A"</b>		Well No. <b>7</b>
Unit Letter <b>K</b>	Section <b>32</b>	Township <b>17 South</b>	Range <b>26 East</b>	County <b>Adair</b>	
Actual Footage Location of Well: <b>2310</b> feet from the <b>West</b> line and <b>1650</b> feet from the <b>South</b> line					
Ground Level Elev. <b>3671</b>	Producing Formation <b>Albo</b>		Pool <b>Empire Albo</b>		Dedicated Acreage: <b>40</b> Acres

1. Is the Operator the only owner in the dedicated acreage outlined on the plat below? YES \_\_\_\_\_ NO \_\_\_\_\_. ("Owner" means the person who has the right to drill into and to produce from any pool and to appropriate the production either for himself or for himself and another. (65-3-29 (e) NMSA 1935 Comp.)
2. If the answer to question one is "no," have the interests of all the owners been consolidated by communitization agreement or otherwise? YES \_\_\_\_\_ NO \_\_\_\_\_. If answer is "yes," Type of Consolidation \_\_\_\_\_
3. If the answer to question two is "no," list all the owners and their respective interests below:

Owner	Land Description

## SECTION B

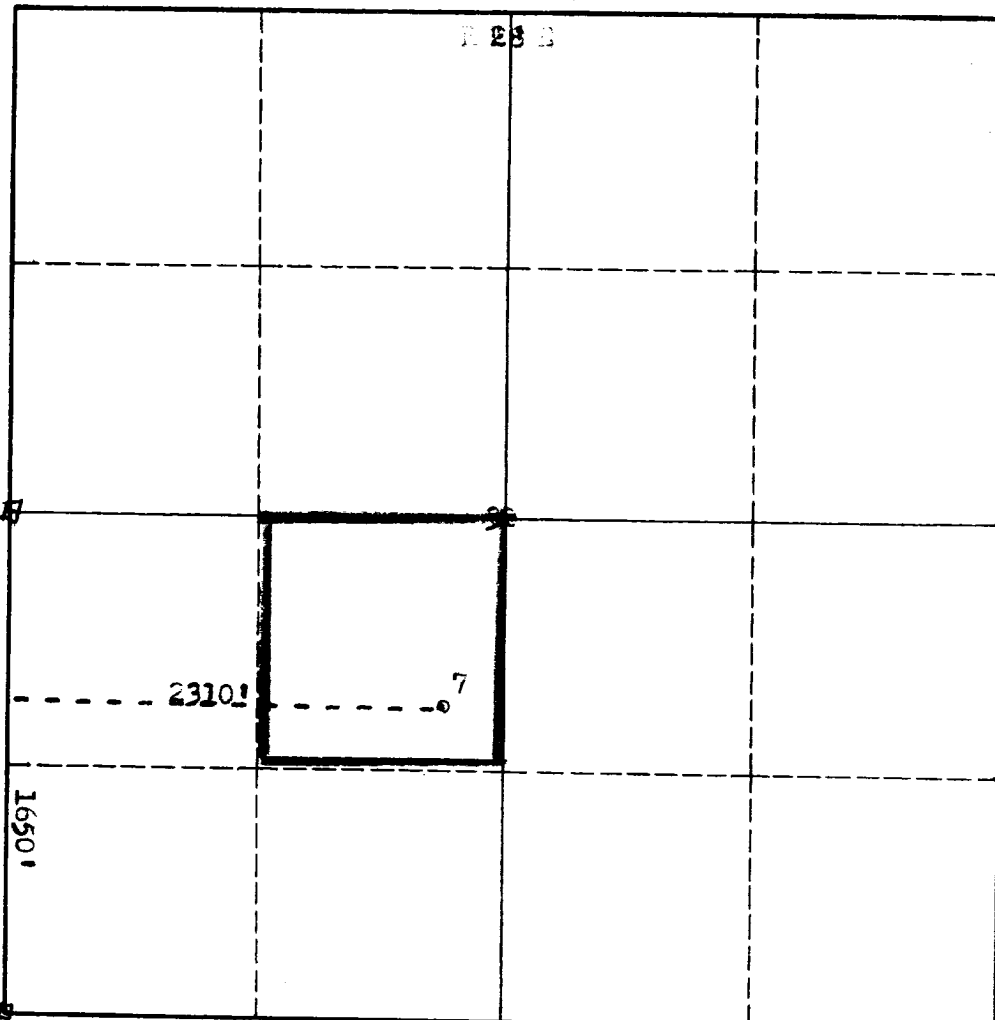
## CERTIFICATION

I hereby certify that the information in SECTION A above is true and complete to the best of my knowledge and belief.

Name <b>A. J. Beane</b>
Position <b>Asst. Prod. Supt.</b>
Company <b>Hondo Oil &amp; Gas Co.</b>
Date <b>3-12-60</b>

I hereby certify that the well location shown on the plat in SECTION B was plotted from field notes of actual surveys made by me or under my supervision, and that the same is true and correct to the best of my knowledge and belief.

Date Surveyed <b>March 11, 1960</b>
Registered Professional Engineer and/or Land Surveyor <b>James H. Loun</b>
Certificate No. <b>1218-6-512</b>



0 330 660 990 1320 1650 1980 2310 2640 2000 1500 1000 500 0

# INSTRUCTIONS FOR COMPLETION OF FORM C-128

1. Operator shall furnish and certify to the information called for in Section A.
2. Operator shall outline the dedicated acreage for *both* oil and gas wells on the plat in Section B.
3. A registered professional engineer or land surveyor registered in the State of New Mexico or approved by the Commission shall show on the plat the location of the well and certify this information in the space provided.
4. All distances shown on the plat must be from the outer boundaries of the Section.
5. If additional space is needed for listing owners and their respective interests as required in question 3 of Section A, please use space below.

OIL CONSERVATION COMMISSION	
ARTEZIA DISTRICT OFFICE	
Plat Number Received	10
DISTRIBUTION	
	NO. FURNISHED
OPERATOR	5
SANTA FE	1
ALLOCATION OFFICE	
STATE LAND OFFICE	1
U. S. G. S.	2
TRANSPORTER	
FILE	1
BUREAU OF MINES	