

NEW MEXICO OIL CONSERVATION COMMISSION
Santa Fe, New Mexico

Form G-101
Revised 12/1/55)
30-015-01663
SEP 12 1960

NOTICE OF INTENTION TO DRILL

Notice must be given to the District Office of the Oil Conservation Commission and approval obtained before drilling or recompletion begins. If changes in the proposed plan are considered advisable, a copy of this notice showing such changes will be returned to the sender. Submit this notice in QUINTUPPLICATE. One copy will be returned following approval. See additional instructions in Rules and Regulations of the Commission. If State Land submit 6 Copies Attach Form G-128 in triplicate to first 3 copies of form G-101

Artesia, New Mexico
(Place)

9-2-60
(Date)

OIL CONSERVATION COMMISSION
SANTA FE, NEW MEXICO

Gentlemen:

You are hereby notified that it is our intention to commence the Drilling of a well to be known as

Hondo-Western-Yates

(Company or Operator)

State 'A'
(Lease)

Well No. 35, in G The well is
(Unit)

located 2310 feet from the North line and 1650 feet from the East line of Section 32, T. 17-S, R. 28-E, NMPM.

(GIVE LOCATION FROM SECTION LINE) Empire Abo Undesignated Pool, Eddy County

If State Land the Oil and Gas Lease is No. 647

If patented land the owner is

Address

We propose to drill well with drilling equipment as follows:

Rotary

The status of plugging bond is

Blanket

Drilling Contractor

Tates Drilling Company

Artesia, New Mexico

We intend to complete this well in the Abo formation at an approximate depth of 6500 feet.

CASING PROGRAM

We propose to use the following strings of Casing and to cement them as indicated:

Size of Hole	Size of Casing	Weight per Foot	New or Second Hand	Depth	Sacks Cement
11"	8-5/8"	28#	Second Hand	1000'	1400
7-7/8"	5-1/2"	15.5#	New	6500'	660

If changes in the above plans become advisable we will notify you immediately.

ADDITIONAL INFORMATION (If recompletion give full details of proposed plan of work.)

SEP 12 1960

Approved....., 19.....
Except as follows:

OIL CONSERVATION COMMISSION

By M. L. Armstrong

Sincerely yours,

Hondo Oil & Gas Company
(Company or Operator)

By A. J. Deans

Position Dist. Prod. Supt.

Send Communications regarding well to

Name A. J. Deans

Address Box 125, Artesia, New Mexico

NEW MEXICO OIL CONSERVATION COMMISSION
WELL LOCATION AND ACREAGE DEDICATION PLAT

RECEIVED

FORM C-128
Revised 5/1/57

SEE INSTRUCTIONS FOR COMPLETING THIS FORM ON THE REVERSE SIDE

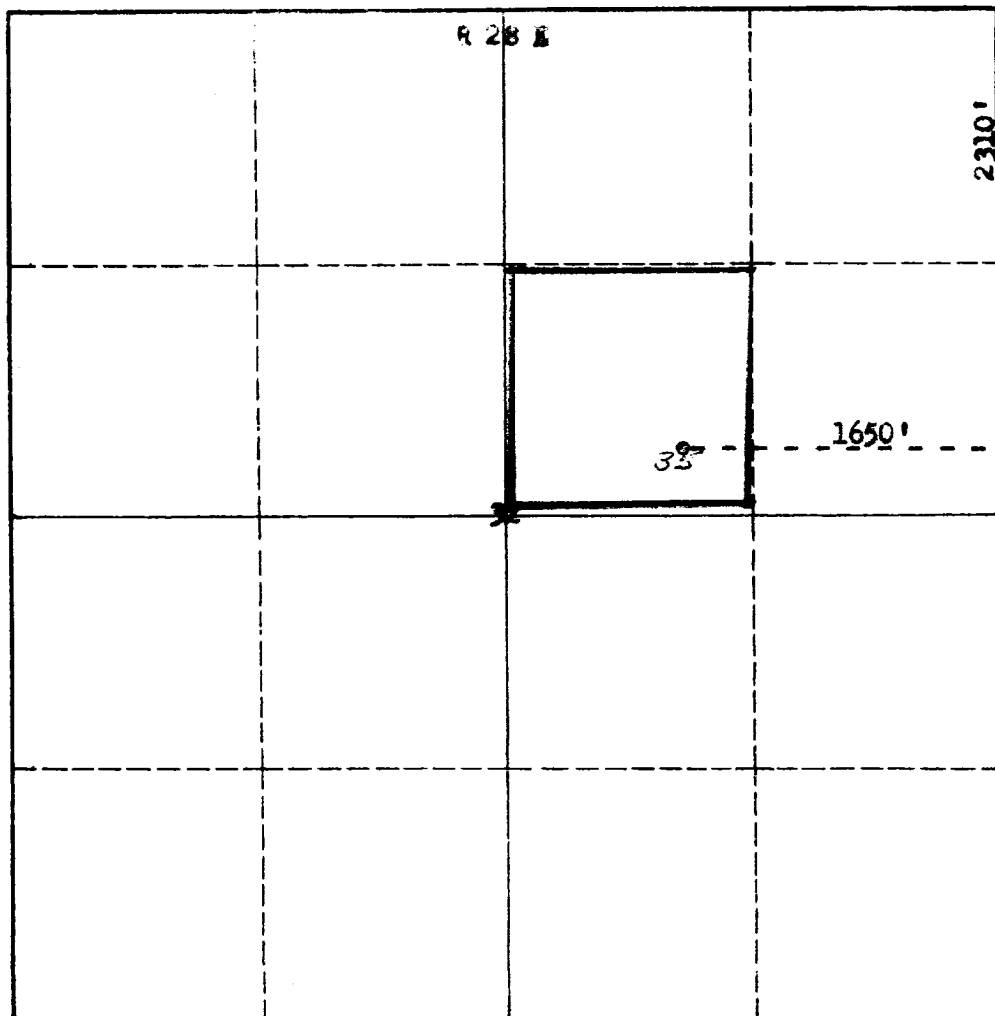
SECTION A

Operator Hondo-Western-Yates			Lease State "A"		Well No. 35	
Unit Letter G	Section 32	Township 17 South	Range 28 East	County Eddy		
Actual Footage Location of Well: 2310 feet from the North line and 1650 feet from the East line						
Ground Level Elev. 3689	Producing Formation ABO		Pool Empire-Abs		Dedicated Acreage: 40 Acres	

1. Is the Operator the only owner in the dedicated acreage outlined on the plat below? YES ☒ NO ☐ ("Owner" means the person who has the right to drill into and to produce from any pool and to appropriate the production either for himself or for himself and another. (65-3-29 (e) NMSA 1935 Comp.)
2. If the answer to question one is "no," have the interests of all the owners been consolidated by communitization agreement or otherwise? YES ☐ NO ☐ . If answer is "yes," Type of Consolidation _____
3. If the answer to question two is "no," list all the owners and their respective interests below:

Owner	Land Description

SECTION B



CERTIFICATION

I hereby certify that the information in SECTION A above is true and complete to the best of my knowledge and belief.

Name <i>G. J. ...</i>
Position <i>Asst. Prof. ...</i>
Company <i>Hondo Oil ...</i>
Date <i>7-9-60</i>

I hereby certify that the well location shown on the plat in SECTION B was plotted from field notes of actual surveys made by me or under my supervision, and that the same is true and correct to the best of my knowledge and belief.

Date Surveyed September 8, 1960
Registered Professional Engineer and/or Land Surveyor <i>[Signature]</i>
Certificate No. N.M.L.S.No. 3286

0 330 660 990 1320 1650 1980 2310 2640 2000 1500 1000 500 0

INSTRUCTIONS FOR COMPLETION OF FORM C-128

1. Operator shall furnish and certify to the information called for in Section A.
2. Operator shall outline the dedicated acreage for *both* oil and gas wells on the plat in Section B.
3. A registered professional engineer or land surveyor registered in the State of New Mexico or approved by the Commission shall show on the plat the location of the well and certify this information in the space provided.
4. All distances shown on the plat must be from the outer boundaries of the Section.
5. If additional space is needed for listing owners and their respective interests as required in question 3 of Section A, please use space below.

OIL CONSERVATION COMMISSION		
ARTESIA DISTRICT OFFICE		
No. Copies Received		
DISTRIBUTION		
	NO. FURNISHED	
OPERATOR	5	
SANTA FE	1	
PRORATION OFFICE		
STATE LAND OFFICE	1	
U. S. G. S.		
TRANSPORTER		
FILE	1	
BUREAU OF MINES		