

NUMBER OF COPIES RECEIVED	
DISTRIBUTION	
SANTA FE	
FILE	
U.S.G.S.	
LAND OFFICE	
TRANSPORTER	
OIL	
GAS	
PRODUCTION OFFICE	
OPERATOR	

NEW MEXICO OIL CONSERVATION COMMISSION
Santa Fe, New Mexico

Form C-101
Revised (12/1/55)

NOTICE OF INTENTION TO DRILL

Notice must be given to the District Office of the Oil Conservation Commission and approval obtained before drilling or recompletion begins. If changes in the proposed plan are considered advisable, a copy of this notice showing such changes will be returned to the sender. Submit this notice in **QUINTUPLICATE**. One copy will be returned following approval. See additional instructions in Rules and Regulations of the Commission. **If State Land submit 6 Copies Attach Form C- 128 in triplicate to first 3 copies of form C-101**

Hobbs, New Mexico
(Place)

2-1-62
(Date)

OIL CONSERVATION COMMISSION
SANTA FE, NEW MEXICO

Gentlemen:

You are hereby notified that it is our intention to commence the Drilling of a well to be known as

Cactus Drilling Company

(Company, or Operator)

Pan American State
(Lease)

Well No. 2-C

in 6
(Unit)

The well is

located 408 feet from the North line and 2287.56 feet from the West line of Section 34, T.17-S, R28-E, NMPM.

(GIVE LOCATION FROM SECTION LINE)

Artesia Pool,

Eddy

County

If State Land the Oil and Gas Lease is No.

If patented land the owner is.

Address.

We propose to drill well with drilling equipment as follows: Cable Tools

The status of plugging bond is Filed

Drilling Contractor Cactus Drilling Company

We intend to complete this well in the L. Grayburg

formation at an approximate depth of 2050' feet.

CASING PROGRAM

We propose to use the following strings of Casing and to cement them as indicated:

Size of Hole	Size of Casing	Weight per Foot	New or Second Hand	Depth	Sacks Cement
10"	8 5/8"	24	Second Hand	575	50
8"	5 1/2"	14	" "	2050	75

If changes in the above plans become advisable we will notify you immediately.

ADDITIONAL INFORMATION (If recompletion give full details of proposed plan of work.)

FEB 5 1962

Approved....., 19.....
Except as follows:

Sincerely yours,

Cactus Drilling Company

(Company or Operator)

By Gene Baker

Position Vice-President

Send Communications regarding well to

Name Cactus Drilling Company

P.O. Box 1826, Hobbs, N.M.

OIL CONSERVATION COMMISSION

By M.L. Armstrong

NEW MEXICO OIL CONSERVATION COMMISSION
WELL LOCATION AND ACREAGE DEDICATION PLAT

FORM C-125
 Revised 3/1/57

SEE INSTRUCTIONS FOR COMPLETING THIS FORM ON THE REVERSE SIDE

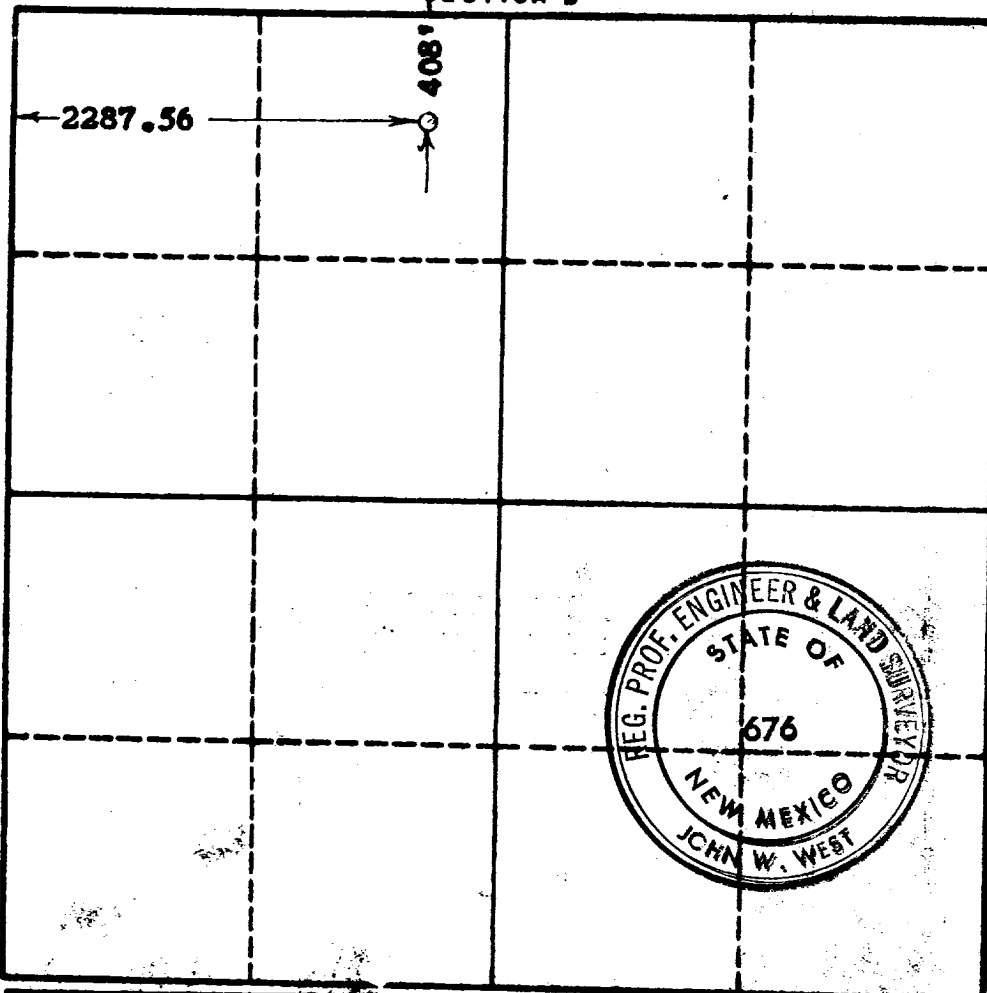
SECTION A

Operator Cactus Drilling Company			Lease Pan American State "C"		Well No. 2
Unit Letter C	Section 34	Township 17 South	Range 28 East	County Hddy	
Actual Footage Location of Well: 2287.56 feet from the west line and 408 feet from the north line					
Ground Level Elev.	Producing Formation Premier		Pool Artesia Under	Dedicated Acreage: 1.0 Acres	

1. Is the Operator the only owner in the dedicated acreage outlined on the plat below? YES ☒ NO ☐ ("Owner" means the person who has the right to drill into and to produce from any pool and to appropriate the production either for himself or for himself and another. (65-3-29 (a) NMSA 1935 Comp.)
2. If the answer to question one is "no," have the interests of all the owners been consolidated by communication agreement or otherwise? YES ☐ NO ☐ If answer is "yes," Type of Consolidation _____
3. If the answer to question two is "no," list all the owners and their respective interests below:

Owner	Land Description

SECTION B



CERTIFICATION

I hereby certify that the information in SECTION A above is true and complete to the best of my knowledge and belief.

John W. Baker
 Name

Vice-President
 Position

Cactus Drilling Co.
 Company

2-3-62
 Date

I hereby certify that the well location shown on the plat in SECTION B was placed from field notes of actual surveys made by me or under my supervision, and that the same is true and correct to the best of my knowledge and belief.

Date Surveyed
Feb. 2, 1962
 Registered Professional Engineer and/or Land Surveyor, **JOHN W. WEST**

John W. West
 Certified by
John - P.E. R.C.E. No. 676

0 330 660 990 1320 1650 1980 2310 2640 2970 3300 3630 3960 4290 4620 4950 5280 5610 5940 6270 6600