

NEW MEXICO OIL CONSERVATION COMMISSION
Santa Fe, New Mexico

RECEIVED
Revised (12/1/55)

JUL 26 1961

NOTICE OF INTENTION TO DRILL

Notice must be given to the District Office of the Oil Conservation Commission and approval obtained before drilling begins. If changes in the proposed plan are considered advisable, a copy of this notice showing such changes will be returned to the sender. Submit this notice in **QUINTUPLICATE**. One copy will be returned following approval. See additional instructions in Rules and Regulations of the Commission. **If State Land submit 6 Copies Attach Form C-128 in triplicate to first 3 copies of form C-101**

Artesia, New Mexico

(Place)

July 10, 1961

(Date)

OIL CONSERVATION COMMISSION
SANTA FE, NEW MEXICO

Gentlemen:

You are hereby notified that it is our intention to commence the **Drilling** of a well to be known as

Western-Yates

(Company or Operator)

State 647

(Lease)

, Well No. 171

, in B

(Unit)

The well is

located 380 feet from the North line and 2310 feet from the

East

line of Section 35, T. 17-S, R. 28-E, NMPM.

(GIVE LOCATION FROM SECTION LINE)

Artesia

Pool, Eddy

County

If State Land the Oil and Gas Lease is No. 647

If patented land the owner is.....

Address.....

We propose to drill well with drilling equipment as follows: Rotary Rig

The status of plugging bond is Blanket Bond

Drilling Contractor Unknown

We intend to complete this well in the Premier

formation at an approximate depth of 2280 feet.

CASING PROGRAM

We propose to use the following strings of Casing and to cement them as indicated:

Size of Hole	Size of Casing	Weight per Foot	New or Second Hand	Depth	Sacks Cement
<u>9 5/8</u>	<u>7"</u>	<u>17 lb.</u>	<u>New</u>	<u>600'</u>	<u>75 sacks</u>
<u>6 1/8</u>	<u>4 1/2"</u>	<u>11.6 lb.</u>	<u>New</u>	<u>2280'</u>	<u>125 sacks</u>

If changes in the above plans become advisable we will notify you immediately.

ADDITIONAL INFORMATION (If recompletion give full details of proposed plan of work.)

Approved JUL 26 1961, 19.....
Except as follows:

OIL CONSERVATION COMMISSION

By ML Armstrong

Sincerely yours,

Western-Yates

(Company or Operator)

By PPD Armstrong

Position Engineer

Send Communications regarding well to

Name Western-Yates

Address P.O. Box 427, Artesia, New Mexico

NUMBER OF COPIES RECEIVED	
DISTRIBUTION	
SANTA FE	
FILE	
U.S.G.S.	
LAND OFFICE	
TRANSPORTER	OIL GAS
PRODUCTION OFFICE	
OPERATOR	

NEW MEXICO OIL CONSERVATION COMMISSION
WELL LOCATION AND ACREAGE DEDICATION PLAT
 SEE INSTRUCTIONS FOR COMPLETING THIS FORM ON THE REVERSE SIDE

RECEIVED
 Form C-128
 Revised 5/1/57
JUL 26 1961
O. C. C.
ARTESIA, OFFICE

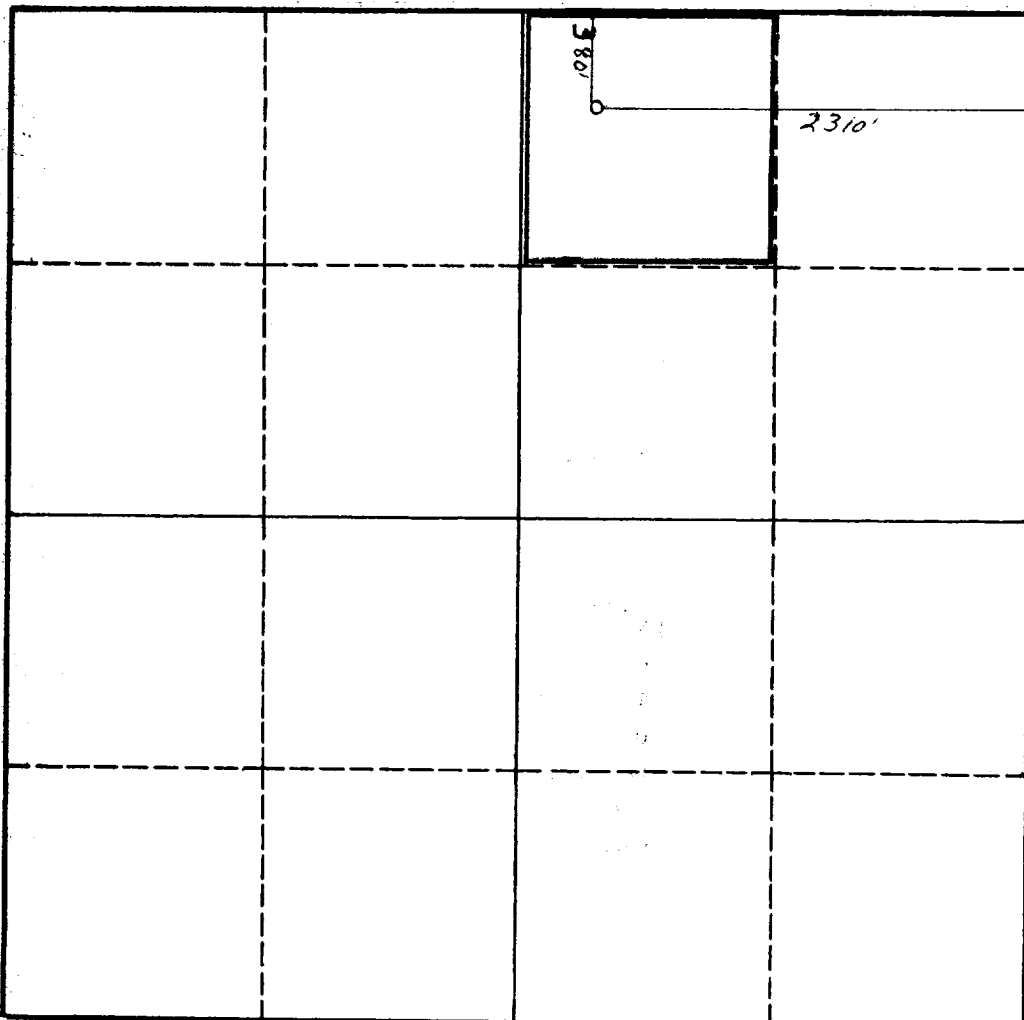
SECTION A

Operator Western-Yates		Lease State 647		Well No. 171	
Unit Letter B	Section 35	Township 17 S	Range 28 E	County Eddy	
Actual Footage Location of Well: 380 feet from the N line and 2310 feet from the E line					
Ground Level Elev. 3681	Producing Formation Grayburg		Pool Artesia	Dedicated Acreage: 40 Acres	

1. Is the Operator the only owner in the dedicated acreage outlined on the plat below? YES ☒ NO ____ . ("Owner" means the person who has the right to drill into and to produce from any pool and to appropriate the production either for himself or for himself and another. (65-3-29 (e) NMSA 1935 Comp.)
2. If the answer to question one is "no," have the interests of all the owners been consolidated by communitization agreement or otherwise? YES ____ NO ____ . If answer is "yes," Type of Consolidation _____
3. If the answer to question two is "no," list all the owners and their respective interests below:

Owner	Land Description

SECTION B



CERTIFICATION

I hereby certify that the information in SECTION A above is true and complete to the best of my knowledge and belief.

Name	R. M. Davenport
Position	Engineer
Company	Western-Yates
Date	July 22, 1961

I hereby certify that the well location shown on the plat in SECTION B was plotted from field notes of actual surveys made by me or under my supervision, and that the same is true and correct to the best of my knowledge and belief.

Date Surveyed	7/22/61
Registered Professional Engineer and/or Land Surveyor	H. C. Yates
Certificate No.	772

0 330 660 990 1320 1650 1980 2310 2640 2000 1500 1000 500 0

INSTRUCTIONS FOR COMPLETION OF FORM C-128

1. Operator shall furnish and certify to the information called for in Section A.
2. Operator shall outline the dedicated acreage for *both* oil and gas wells on the plat in Section B.
3. A registered professional engineer or land surveyor registered in the State of New Mexico or approved by the Commission shall show on the plat the location of the well and certify this information in the space provided.
4. All distances shown on the plat must be from the outer boundaries of the Section.
5. If additional space is needed for listing owners and their respective interests as required in question 3 of Section A, please use space below.

1 OIL CONSERVATION COMMISSION		
ARTESIA DISTRICT OFFICE		
No. Copies Received		9
DISTRIBUTION		
OPERATOR	3	
SANTA FE	1	
PRORATION OFFICE		
STATE LAND OFFICE	1	
U. S. G. S.	2	
TRANSPORTER		
FILE	1	<input checked="" type="checkbox"/>
BUREAU OF MINES	1	