

UNITED STATES
DEPARTMENT OF THE INTERIOR
GEOLOGICAL SURVEY

APPLICATION FOR PERMIT TO DRILL, DEEPEN, OR PLUG BACK

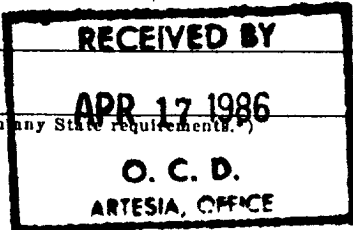
1a. TYPE OF WORK
 DRILL ☐ DEEPEN ☐ PLUG BACK ☐

b. TYPE OF WELL
 OIL WELL ☒ GAS WELL ☐ OTHER ☐ RE-ENTRY ☒ SINGLE ZONE ☐ MULTIPLE ZONE ☐

2. NAME OF OPERATOR
 McClellan Oil Corporation

3. ADDRESS OF OPERATOR
 P.O. Drawer 730, Roswell, NM 88202

4. LOCATION OF WELL (Report location clearly and in accordance with any State requirements.)
 At surface 660' FSL & 1980' FEL
 At proposed prod. zone *wt. 0*



14. DISTANCE IN MILES AND DIRECTION FROM NEAREST TOWN OR POST OFFICE*
 9 miles north of Loco Hills

15. DISTANCE FROM PROPOSED* LOCATION TO NEAREST PROPERTY OR LEASE LINE, FT. (Also to nearest drlg. unit line, if any) 660'

16. NO. OF ACRES IN LEASE
 1780

17. NO. OF ACRES ASSIGNED TO THIS WELL
 40

18. DISTANCE FROM PROPOSED LOCATION* TO NEAREST WELL, DRILLING, COMPLETED, OR APPLIED FOR, ON THIS LEASE, FT. 7260'

19. PROPOSED DEPTH
 2000'

20. ROTARY OR CABLE TOOLS
 Cable Tools

21. ELEVATIONS (Show whether DF, RT, GR, etc.)
 3678' G.L.

22. APPROX. DATE WORK WILL START*
 May 15, 1986

PROPOSED CASING AND CEMENTING PROGRAM

SIZE OF HOLE	SIZE OF CASING	WEIGHT PER FOOT	SETTING DEPTH	QUANTITY OF CEMENT
10-1/4"	8-5/8"	24 lb.	330'	200 sx In Hole
7-7/8"	5-1/2"	15 lb.	3129'	492 sx Pulled 1232'

Propose to re-enter this hole to an approximate depth of 2000'. Will make positive connection with 5-1/2" stub at 1232' and attempt completion in the Penrose Sand.

*OTD- 3/29 Comp. 2-8-59
 Re-enter Attempt P&A 9-7-73*

*Filed FD 1
 NL, APL
 5-2-86*

IN ABOVE SPACE DESCRIBE PROPOSED PROGRAM: If proposal is to deepen or plug back, give data on present productive zone and proposed new productive zone. If proposal is to drill or deepen directionally, give pertinent data on subsurface locations and measured and true vertical depths. Give blowout preventer program, if any.

SIGNED Mark McClellan

TITLE Geologist

DATE 4/3/86

(This space for Federal or State office use)

PERMIT NO. 20153

APPROVAL DATE _____

APPROVED BY _____

TITLE _____

DATE 4-16-86

CONDITIONS OF APPROVAL, IF ANY:

*See Instructions On Reverse Side

APPROVAL SUBJECT TO
 GENERAL REQUIREMENTS AND
 SPECIAL STIPULATIONS
 ATTACHED

NEW MEXICO OIL CONSERVATION COMMISSION
WELL LOCATION AND ACREAGE DEDICATION PLAT

Form C-102
Supersedes C-128
Effective 1-1-65

All distances must be from the outer boundaries of the Section.

Operator McClellan Oil Corporation			Lease Hinkle Fed.		Well No. 2
Unit Letter 0	Section 8	Township 16-S	Range 29-E	County Eddy	

Actual Footage Location of Well:

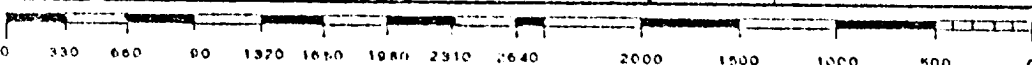
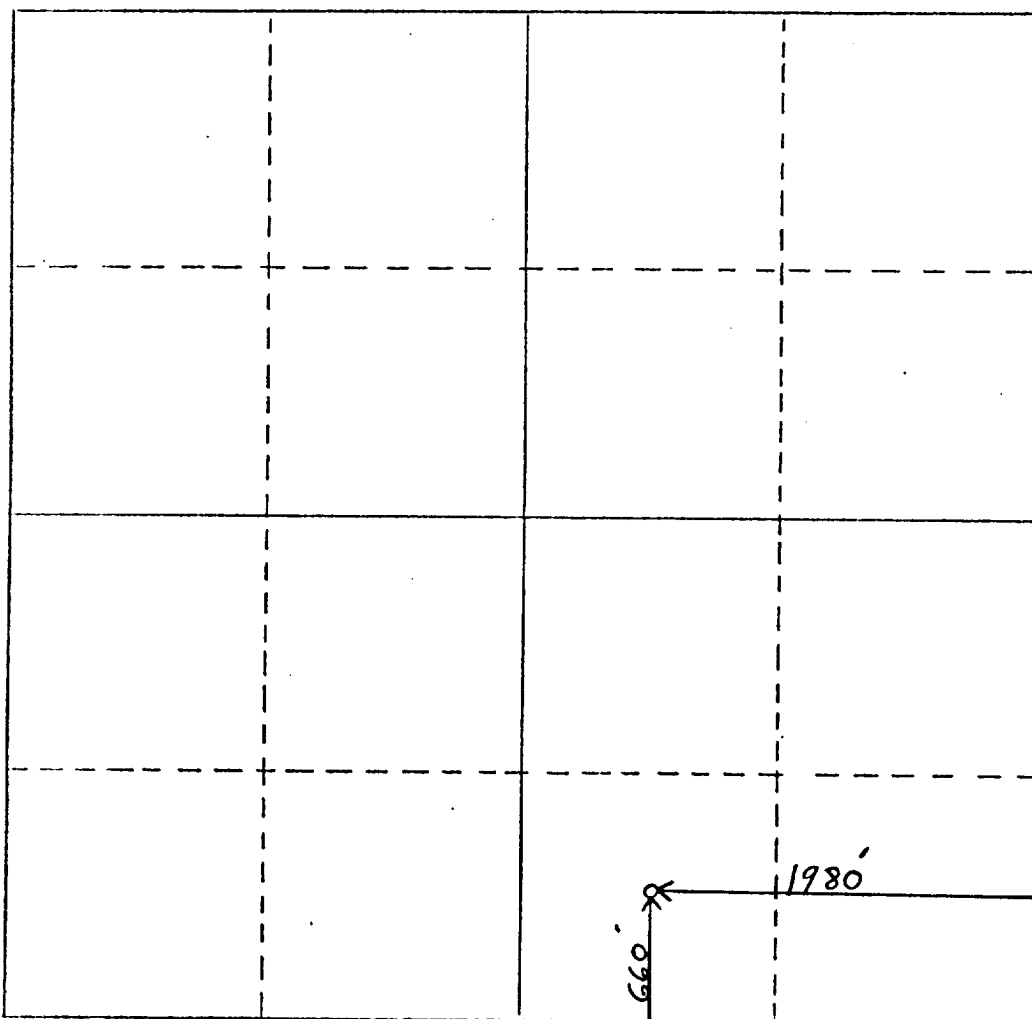
660	feet from the South	line and	1980	feet from the East	line
Ground Level Elev. 3678'	Producing Formation Penrose	Pool Wildcat		Dedicated Acreage: 40	

1. Outline the acreage dedicated to the subject well by colored pencil or hatchure marks on the plat below.
2. If more than one lease is dedicated to the well, outline each and identify the ownership thereof (both as to working interest and royalty).
3. If more than one lease of different ownership is dedicated to the well, have the interests of all owners been consolidated by communitization, unitization, force-pooling, etc?

☐ Yes ☐ No If answer is "yes," type of consolidation _____

If answer is "no," list the owners and tract descriptions which have actually been consolidated. (Use reverse side of this form if necessary.) _____

No allowable will be assigned to the well until all interests have been consolidated (by communitization, unitization, forced-pooling, or otherwise) or until a non-standard unit, eliminating such interests, has been approved by the Commission.



CERTIFICATION

I hereby certify that the information contained herein is true and complete to the best of my knowledge and belief.

Mark McClellan

Name

Mark McClellan

Position

Geologist

Company

McClellan Oil Corp.

Date

4/3/86

I hereby certify that the well location shown on this plat was plotted from field notes of actual surveys made by me or under my supervision, and that the same is true and correct to the best of my knowledge and belief.

See original plat

Date Surveyed

Registered Professional Engineer
and/or Land Surveyor

Certificate No.

APPROVED

JAN 19 1959

MEXICO OIL CONSERVATION COMMISSION
Well Location and Acreage Dedication Plat

Revised 5/1/57

Section 100 ROBERT F. EVANS
ACTING DISTRICT ENGINEER

Date 1-17-59

Operator Utey Exploration Co. Lease Davis - Federal A
Well No. 1 Unit Letter Q Section 8 Township 16S Range 29E NMPM
Located 160 Feet From 5 Line, 1980 Feet From 15 Line
County Weld G. L. Elevation 3678 Dedicated Acreage 40 Acres
Name of Producing Formation San Andres Pool Wildcat (High permeable extent)

1. Is the Operator the only owner* in the dedicated acreage outlined on the plat below?
Yes X No .
2. If the answer to question one is "no," have the interests of all the owners been consolidated by communitization agreement or otherwise? Yes No . If answer is "yes," Type of Consolidation
3. If the answer to question two is "no," list all the owners and their respective interests below:

Owner

Land Description

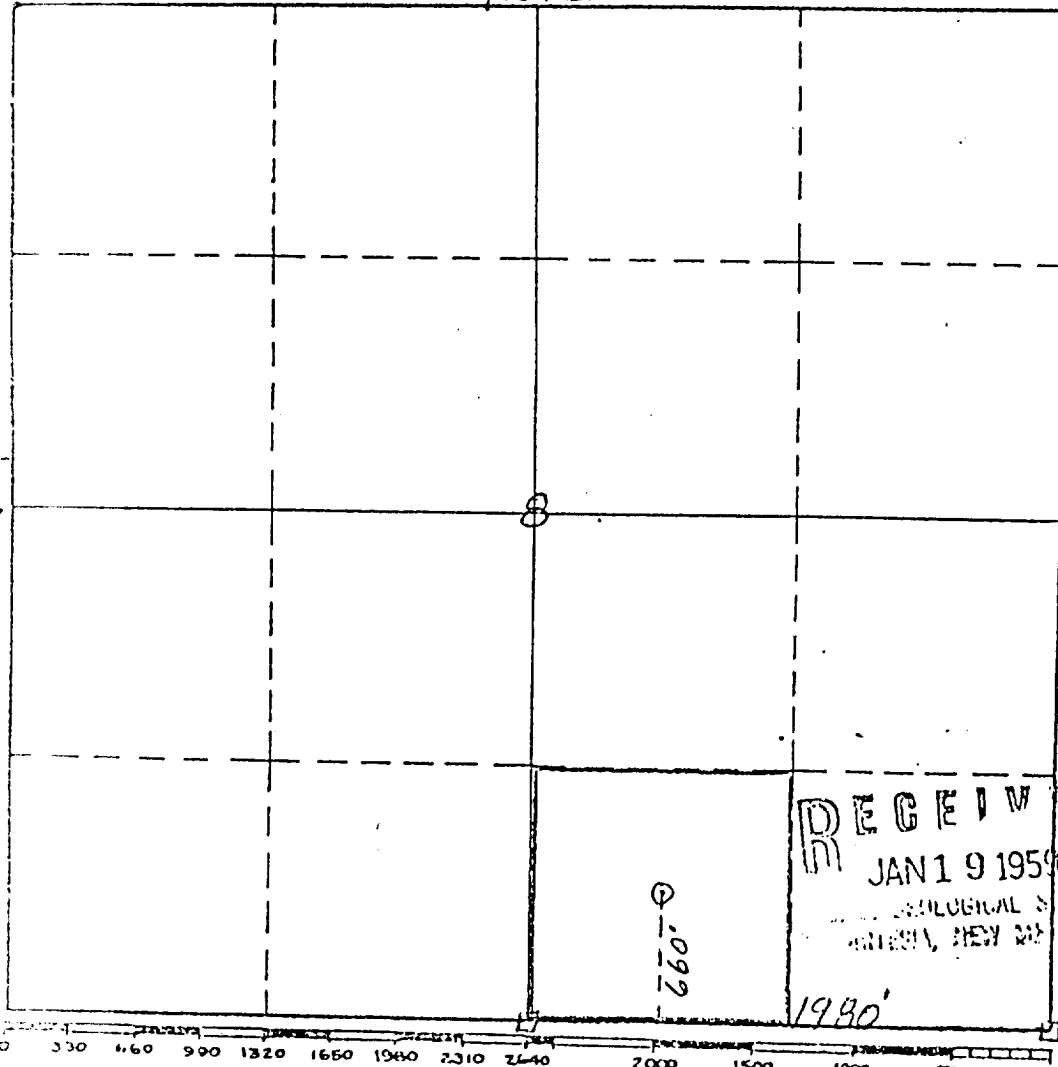
RECEIVED

JAN 21 1959

U. S. GEOLOGICAL SURVEY
ROOSEVELT, NEW MEXICO

Section. 8

R29E



This is to certify that the information in Section A above is true and complete to the best of my knowledge and belief.

Utey Exploration Co.
(Operator)

Archie M. Speier
(Representative)

Box 1268, Artesia, N.M.
Address

RECEIVED

This is to certify that the well location shown on the plat in Section B was plotted from 1980 feet of actual surveys made by me, under my supervision and that the same is true and correct to the best of my knowledge and belief.

Date Surveyed January 14, 1959
Samuel H. Brown
Registered Professional
Engineer and/or Land Surveyor.

Certificate No. 542

(See instructions for completing this form on the reverse side)

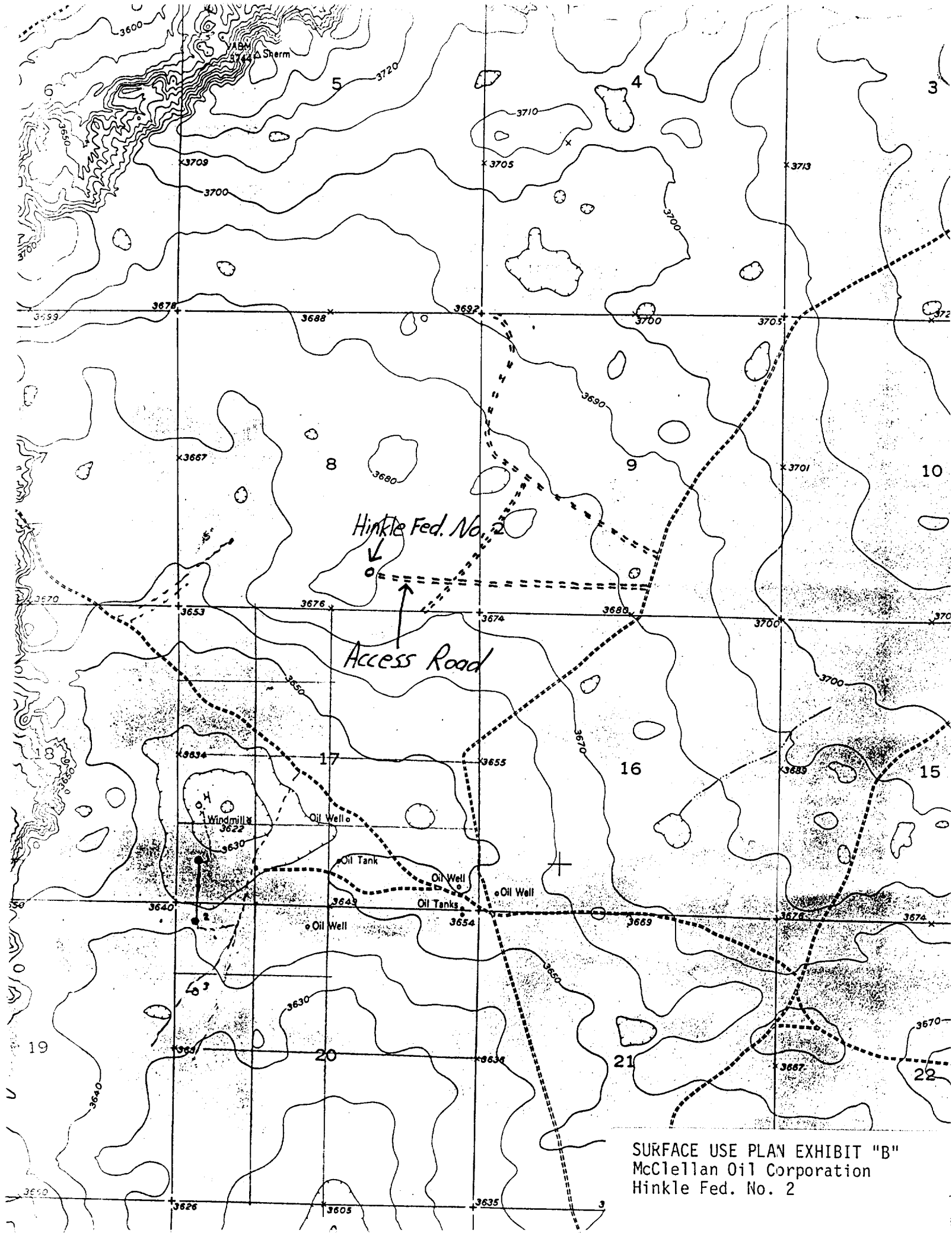
Hinkle Fed. No. 2
McClellan Oil Corp.

REQUIREMENTS
(NTL-6)

1. Location: 660' FSL & 1980' FEL of Section 8-T16S-R29E
2. Elevation: 3678' G.L.
3. Geologic name of surface formation: Mescalero Pediment
4. Type of drilling rig and associated equipment: Cable Tools
5. Proposed drilling depth and objective formation: 2000' - Penrose
6. Estimated tops of geologic markers:

Yates	<u>814'</u>	San Andres	<u> </u>	Abo	<u> </u>
7-Rivers	<u>1020'</u>	Glorieta	<u> </u>	Wolfcamp	<u> </u>
Queen	<u>1531'</u>	Tubb	<u> </u>		
7. Estimated depths of any oil, water, or gas: Possible oil and gas at 1770'.
- 8-9. Proposed casing program:

<u>8-5/8"</u>	@	<u>300'</u>	Grade	<u>J-55</u>	Wt.	<u>24 lb.</u>	Type Cement	<u>Class "C"</u>
<u>5-1/2"</u>	@	<u>3129'</u>	Grade	<u>J-55</u>	Wt.	<u>15 lb.</u>	Type Cement	<u>Class "C"</u>
10. Specifications for pressure control equipment and testing procedures:
Cable tool control head. See exhibit "E"
11. Type and characteristics of drilling fluids: Drill with native mud.
12. Testing, logging, and coring programs: Will run cased hole Gamma Ray-Neutron.
13. Anticipated abnormal pressures or temperature: None
14. Anticipated commencement and completion date: 5/15/86 - 6/10/86

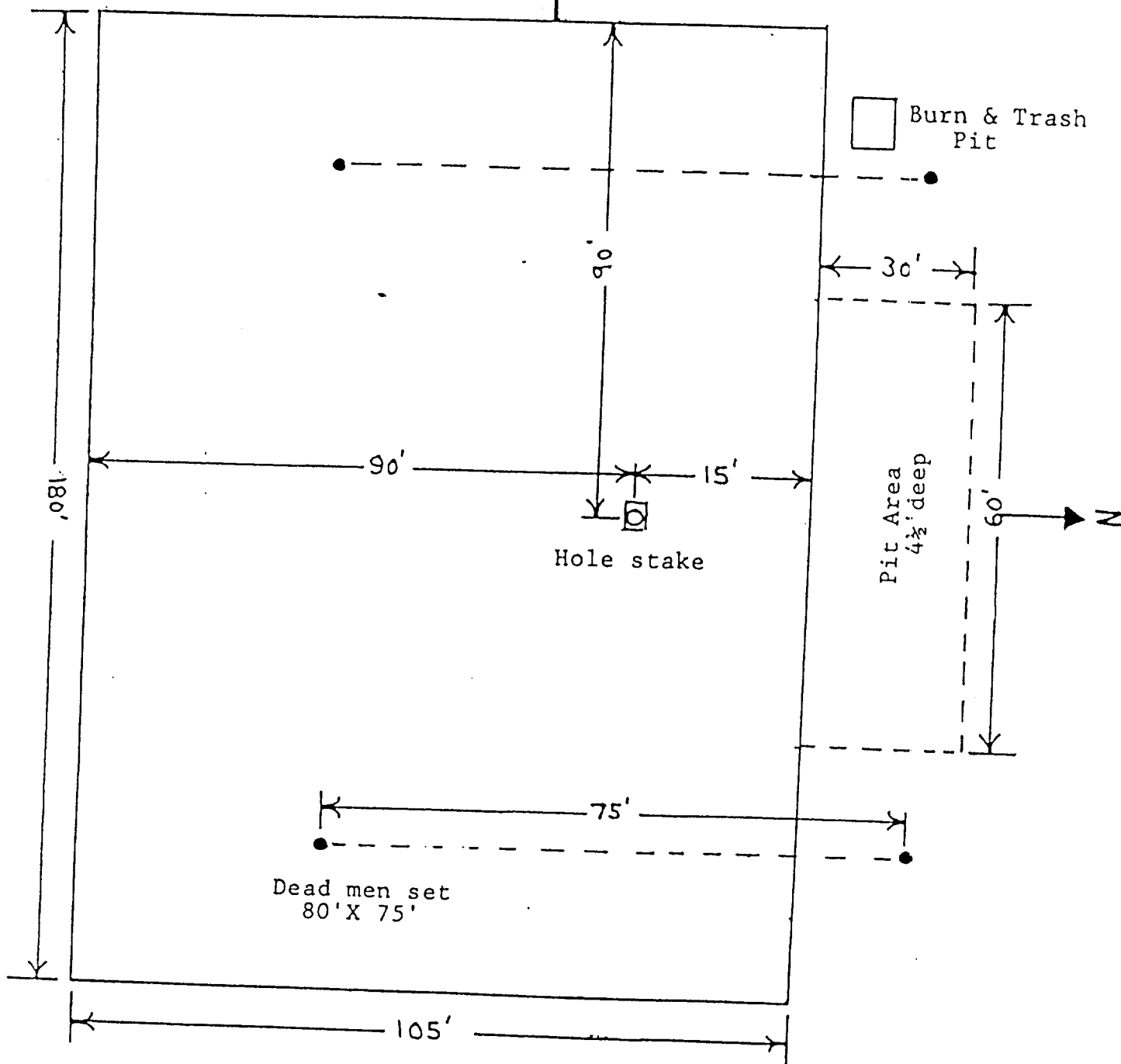


SURFACE USE PLAN EXHIBIT "B"
McClellan Oil Corporation
Hinkle Fed. No. 2



McClellan Oil Corporation
Box 848
Roswell, New Mexico 88201

WELL Hinkle Fed. No. 2
LOCATION 660' FSL + 1980' FEL Σ
Sec. 8-T165-R29E \uparrow



CABLE TOOL LOCATION PLAT

SURFACE USE PLAN EXHIBIT "D"
McClellan Oil Corporation
Hinkle Fed. No. 2



SHAFFER TOOL WORKS



PREVENTERS

SHAFFER MECHANICAL CONTROL GATES

(Patented)

PARTS FOR TYPE 45 SINGLE GATES

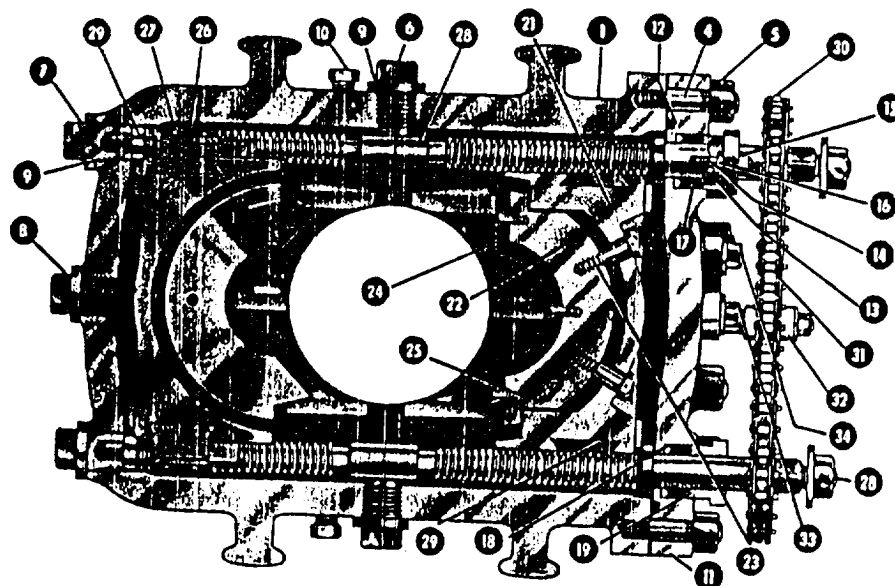


Fig. 84

Shaffer Type 45 Mechanical Single Control Gate—Top View

Part No.	No. Req'd.	NAME OF PART	Part No.	No. Req'd.	NAME OF PART	Part No.	No. Req'd.	NAME OF PART
1	1	Body	15	4	Stuffing Box Gland Stud Nut	26	8	Ram Clip
2	Varies	Body Flange Stud (Not Shown)	16	4	Stuffing Box Gland Jam Nut	27	16	Ram Clip Cap Screw
3	Varies	Body Flange Stud Nut (Not Shown)	17	2 Sets	Stuffing Box Packing (Chevron)	28	2	Operating Screw with Nut
4	Varies	Body End Cover Stud	18	2	Stuffing Box Bronze Packing Ring —Bottom	29	2 R.H. & 2 L.H.	Bronze Half Nut
5	Varies	Body End Cover Stud Nut	19	2	Stuffing Box Bronze Packing Ring —Top	30	2	Sprocket
6	2	Side Plug	20	2	Flange (Not Shown)	31	1	Sprocket Chain (length varies)
7	2	End Bearing Plug	21	1 Set	Ram Block Holder	32	1	Sprocket Chain Tightener
8	1	End Center Plug	22	1 Set	Ram Block (Pipe or Complete Shut-Off)	33	1	Screw with Ratchet Washer for Chain Tightener
9	5	Copper Gasket for Side and End Plug	23	4	Ram Block Retracting Screw	34	1	Screw with Plain Washer for Chain Tightener
10	2	Washout Plug	24	1 Set	Ram Rubber (Pipe or Complete Shut-Off)	35	1	Sprocket Chain Guard (Not Shown)
11	1	End Cover	25	Varies	Ram Rubber Retaining Screw	36	2	Cap Screw with Washer for Chain Guard (Not Shown)
12	1	Hydraulic Packing for End Cover (Earlier Gates use Metal Gasket)						
13	2	Stuffing Box Gland						
14	4	Stuffing Box Gland Stud						

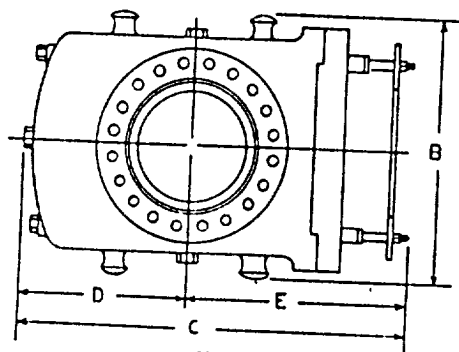


Fig. 85

Dimensional Plan—Shaffer Type 45 Mechanical Single Control Gate

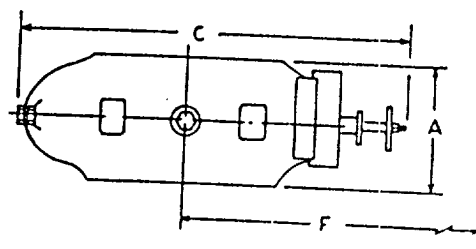


Fig. 86

Dimensional Elevation—Shaffer Type 45 Mechanical Single Control Gate

DIMENSIONAL AND ENGINEERING DATA ON SHAFFER TYPE 45 MECHANICAL SINGLE CONTROL GATES

Size	Max. Service Pressure Rating, psi	Test Pressure, psi	Vertical Bore	Approx. Weight, Pounds	Ram Size	A Height	B Width	C Length	D Center To Rear	E Center To Front	F Max. Distance Needed To Change Rams
6"	3,000	6,000	7 1/4"	1,500	C.S.O. Thru 5" O.D.	14"	27 1/4"	34"	13 1/2"	20 1/2"	41 1/2"
8"	3,000	6,000	9"	2,050	C.S.O. Thru 7" O.D.	15 1/4"	29 1/4"	40"	16 1/4"	23 1/4"	49 1/4"
10"	3,000	6,000	11"	2,580	C.S.O. Thru 8 1/2" O.D.	16 1/4"	32"				
12"	3,000	6,000	12 1/4"	3,345	C.S.O. Thru 10 1/4" O.D.	17 1/4"	33"				
16"	2,000	3,000	15 1/4"	4,200	C.S.O. Thru 13 1/4" O.D.	17"	37"				

SURFACE USE PLAN EXHIBIT "E"
McClellan Oil Corporation
Hinkle Fed. No. 2